

# IT Services

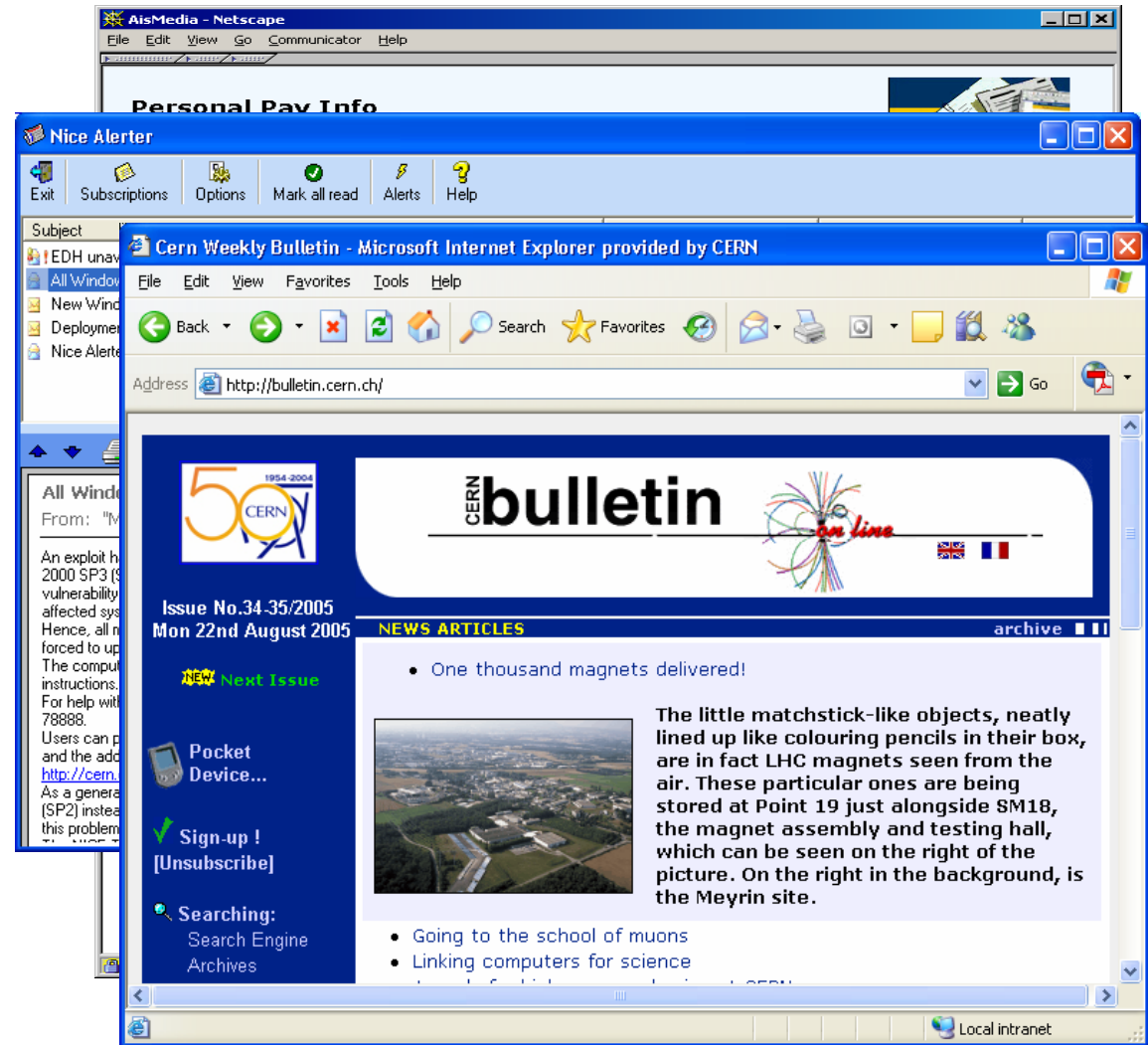
Induction

Tim Smith



# Be Connected !!

- e-payslip
- Notifications
- e-bulletin



2006/00/01

IT Services: Tim.Smith@cern.ch

2 of 7

# Obtaining an Account

- Contact your team's Computing Administrator
  - Typically departmental/experimental secretariat
- Obtain 2 forms:
  - OC5: "Rules for Use of CERN Computing Facilities"
  - User Registration Form
    - Complete and return to Computing Administrator
      - creates account
- Return form to User Registrar (fax/mail)
  - validation and entry in DB
  - **Enable account**

➤ <http://cern.ch/it-dep/comp-usage>





# Access to computing



- Supported / recommended DeskTops
  - **Windows** XP / Scientific **Linux** CERN
- Centrally managed machines
  - Home directories, departmental repositories
    - DFS and AFS
- Mail (listbox) <http://cern.ch/mmm>
- Web <http://cern.ch/webservices>
- Central Services
  - Login services eg LXPLUS
  - Applications / tools for Physics and Engineering
- **Convergence on NICE login**



# Administrative Computing

- <http://edh.cern.ch>
  - Take leave
  - Purchase material
  - Training request
  - Travel claim
  - Request phone & subscription
  - Access request

■ <http://hrt.cern.ch>

➤ <http://cern.ch/ais/apps>

**webHRT**  
Access Rights and Safety  
Training

Date: 30 Aug 2005  
Person Id Timothy John SMITH (IT-UDS)

**Personal Information:**

Name: SMITH  
First Name: TIMOTHY JOHN  
CERN Id:  
Primary Nationality: GB  
Department: IT  
Group: UDS  
Experiment:  
Telephone 1:  
Film Badge: N



**Contract Information:**

Status Description: STAFF MEMBER  
Contract Start:  
At Cern: Y  
Contract End:  
Projected Contract End

**Cern Card Information:** [View History](#)

Card Type:  
Start Date:  
Sequence Number (Validation): 1  
End Date:

| Access Rights |   | Safety Courses |  |
|---------------|---|----------------|--|
| Type          | Description   | Type           | Description                                |
|               | Building 513 outside working hours<br><b>Course(s) required:</b><br>Level 1 (Newcomers) | B31            | Level 1 (Newcomers)<br>Level 2 (Newcomers) |
|               | Building 513 outside working hours<br><b>Course(s) required:</b><br>Level 1 (Newcomers) | B513           |  |
|               | Building 600 outside working hours<br><b>Course(s) required:</b><br>Level 1 (Newcomers) | B600           |  |
|               | CERN vehicle driving license<br><b>Course(s) required:</b><br>Level 1 (Newcomers)       | V              |  |
|               | Computer Centre<br><b>Course(s) required:</b><br>Level 1 (Newcomers)                    | CC1            |  |
|               | Tunnel Transit authorization  | T              |  |





# Computing HelpDesk



- Open 08:30-17:30
  - Tel 78888
  - Email [helpdesk@cern.ch](mailto:helpdesk@cern.ch)
  
- DeskTop Support
  - Installation
  - Problem resolution

➤ <http://cern.ch/it-servicestatus>



# More Information

- CERN home
- IT home

- Tutorials
- Webcasts

- IT flyer

- <http://cern.ch/it-dep/need-help>

CERN Users' pages - Microsoft Internet Explorer provided by CERN

CERN IT Department - Microsoft Internet Explorer provided by CERN

File Edit View Favorites Tools Help

Back Forward Stop Home Search Favorites Refresh Print Mail Printers and Faxes Local intranet

Address <http://it-div.web.cern.ch/it-div/> Go

CERN IT Department CERN Home IT Home Sitemap Phonebook Need Help

Find

All CERN  
IT Department

### IT Services and Projects

For information on the current status of all IT services look at the [IT Service Status Board](#) and the [Dynamic Information page](#) (provided by all services).

#### Department Information

- What We Do
- Department Structure
- Administration
- Minutes & Reports
- Safety in IT
- Job Opportunities

#### More on Computing

- CERN School of Computing
- Colloquia
- Seminars
- Newsletter

#### Access to Computing Facilities

Shortcuts\*: [Account Registration](#) | [If You Need Help](#) | [Rules & Regulations](#) | [Computer Security](#) | [CERN Licensed Software](#)

#### Desktop and Portable Computers

Shortcuts\*: [Email](#), [Spam Fight](#) | [Network Access](#) | [Linux](#) | [Macintosh](#) | [NICE 2000 & XP](#) | [PC Acquisition](#), [PC Rental](#) | [Printing](#) | [Visitors' Portables](#) | [Web Services](#) | [File Transfers](#)

#### Administrative Information Services (AIS)

Shortcuts\*: [Welcome and News](#) | [CET](#) | [CFU](#) | [EDH](#) | [e-RT](#) | [EVM](#) | [HRT](#) | [Stores Catalogue](#)

#### News

- Archived News

#### Newsgroups

- cern.computing
- cern.nice (2000)
- CERN Newsgroups

#### Useful Links

- [IT Service Status Board](#)
- If you need help
- [CERN Document Server](#)
- [Conference Room Bookings](#)
- [Computer Newsletter \(CNL\)](#)
- [Weekly Bulletin](#)

#### Major Projects

- [LHC Computing Grid \(LCG\)](#)

Publications and the Grid)

...xbatch | lxplus

Technical Computing

Local intranet

