

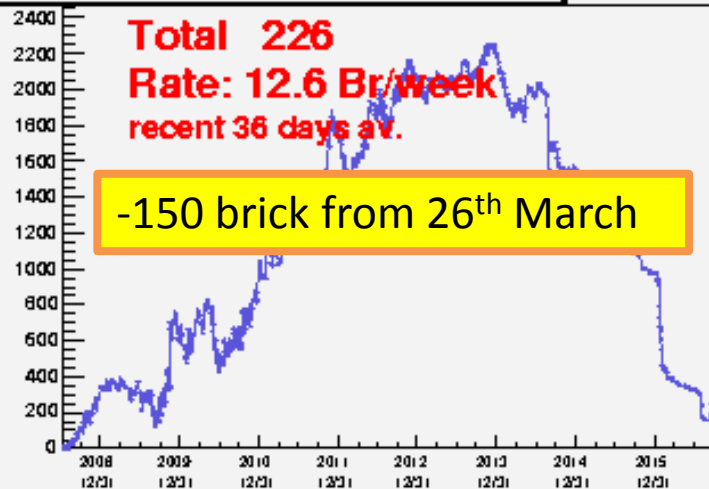
Scanning Overview

25th Oct 2016

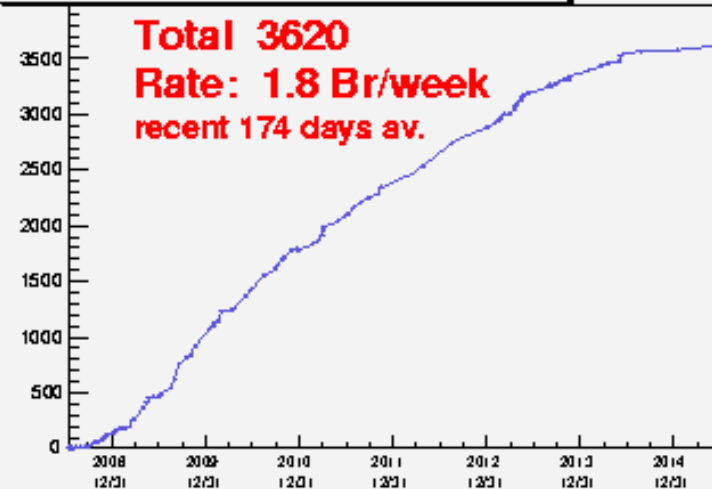
O.Sato

CS feedback status JP

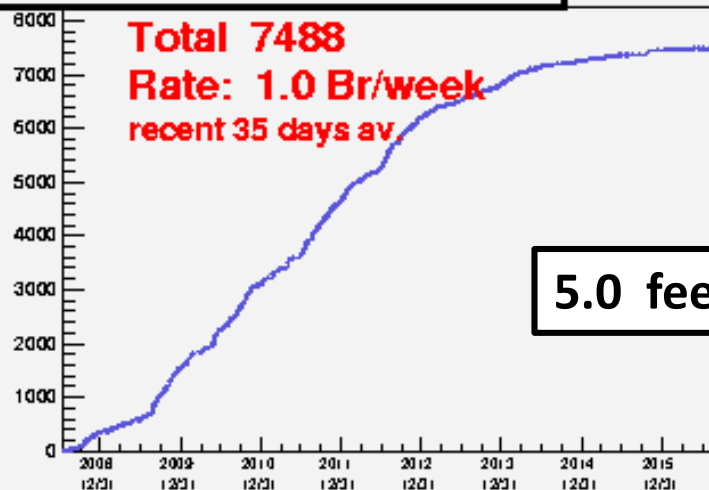
Yet Feedback (Sat Oct 22 12:05:14 2016)



Other CS requests (Sat Oct 22 12:05:14 2016)

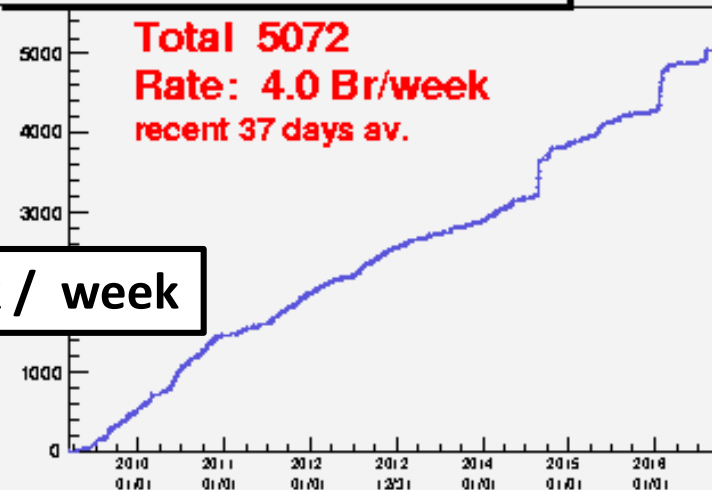


Dev_Request (Sat Oct 22 12:05:14 2016)

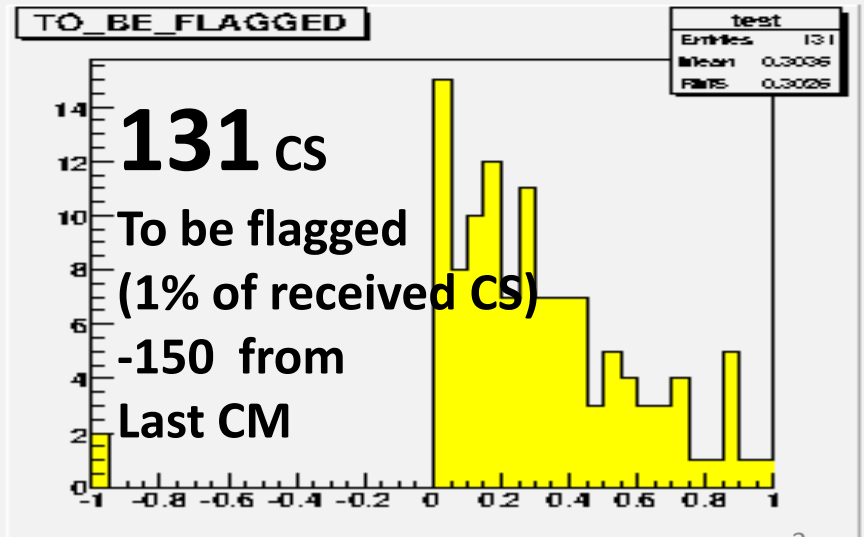
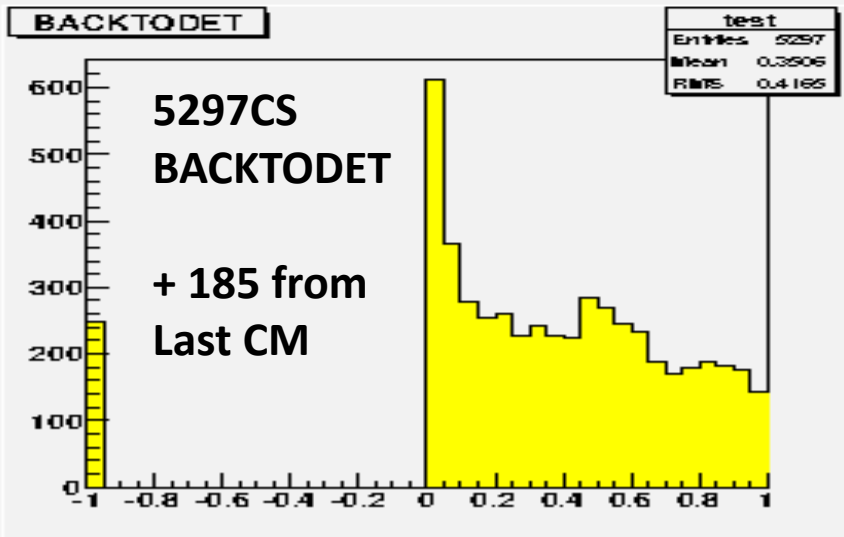
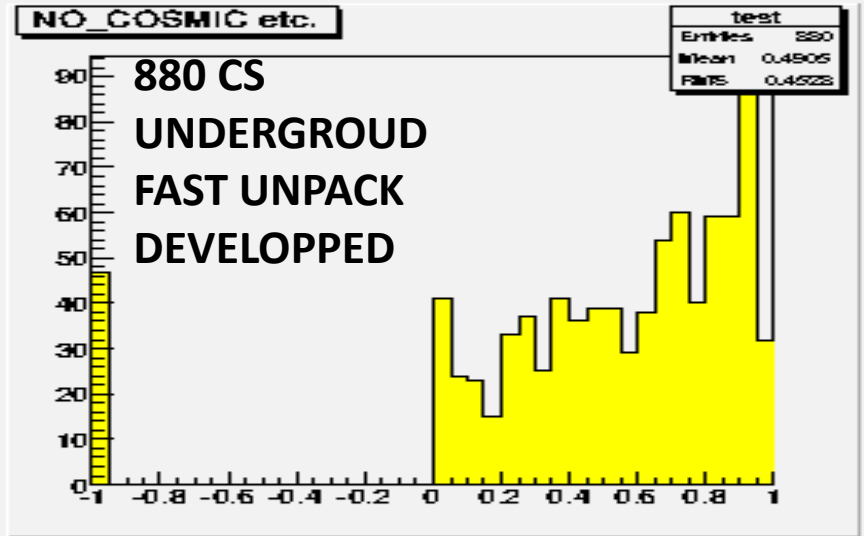
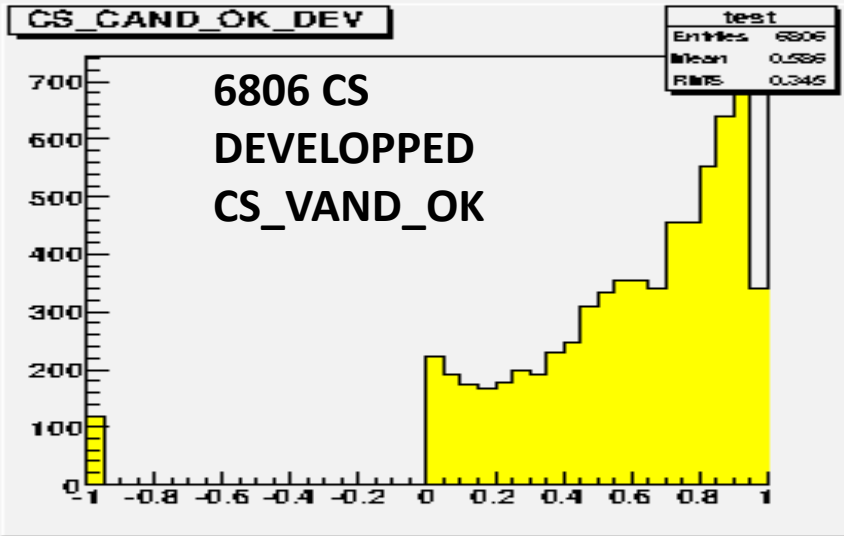


5.0 feedback / week

Back To Detector (Sat Oct 22 12:05:14 2016)



Brick probability JP CS



CS analysis status at Nagoya

- Almost all CS analysis is finished.
- Now **only one SUTS** is available to scan, others are out of usage, Camera system broken etc.
- So time to close the analysis.
- While we received 86 CSD recently 24th Sep.
Solving CS-ID problem at LNGS
20 CSD out of 86 were belonging to KS (atmospheric ν)
So increased normal event is 66 CSD.
Many of them is 3rd 4th CS and looks not event contain like.

Any wat due to lack of resources ,
it is impossible to complete these new CSDs.
So we shall **give up** about **1%** of received CS in JP .

Bricks to be flagged

2nd	43
3rd	152
4th	164

Status of PT&LabRequest

>=2010, priority	In Progress
PT	67
LabRequest	73

Completion of oscillation analysis

In PC meeting at 13th Sep, we agreed that

the statistics for final oscillation analysis papers to be fixed by this CM.

Since no significance increase is expected from now on.

Some consideration

Final ECC development schedule in week 20th Nov.

Include these brick analysis ?

Waiting a bit for DS yet done?

Less than 1% of already reported in 5th paper.

Progress from 31st Mar – 22nd Oct

Country	Located event	Decay Search
Japan	25	36
Swiss	0	0
Italia	24	28
Turkey	0	0
Russia	2	1
Total	51	65
Rate	1.65/w	1.68/w

Received brick status

1st and 2nd bricks & CS_cand_ok_dev

GIVENUP or DEADMATERIAL or CS_RESCAN or wait_new_brick

	Recieved	Still working for location at 4 th Aug	Still working For location Now 22 th Oct	Percentage of still working for location
ANKARA	88	0	0	0.0%
BARI	407	3	0	0.0%
BERN	1597	0	0	0.0%
BOLOGNA-PADOVAA	553	22	⁻¹⁵ → 7	1.3%
DUBNA	60	13	0	0.0%
FRASCATI	64	0	0	0.0%
LEBEDEV	39	0	0	0.0%
NAGOYA	4671	551	⁻¹⁷ → 534	11.4%
NAPOLI	827	1	0	0.0%
ROMA	112	10	9	8.0%
SALERNO	598	54	⁻⁷ → 47	7.9%
SINP-MSU	48	6	6	12.5%

ECC part task completeness

ECC analysis status are stored into xt_event_location_status data base table by all scanning laboratories time to time.

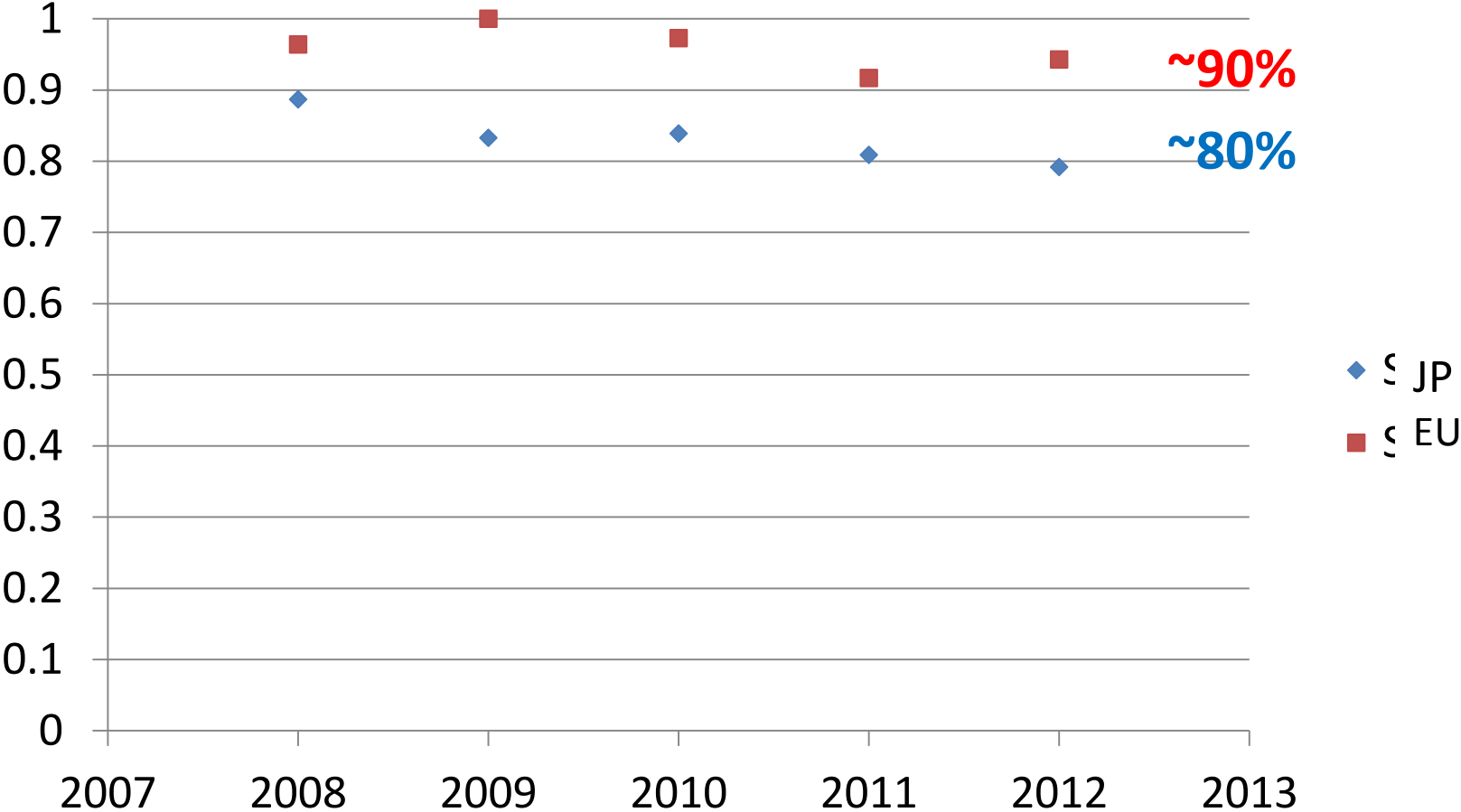
1st and 2nd bricks

Completeness = (LOCATED+GIVEN_UP+DEAD+NEW_BRICK+CS_RESCAN)/ ALL
Other status should be analysis on-going and to be monitored.

	JP	EU
2008 0mu	0.887	0.964
2008 1mu	0.962	0.986
2009 0mu	0.833	1.000
2009 1mu	0.909	0.996
2010 0mu	0.839	0.973
2010 1mu	0.880	0.974
2011 0mu	0.809	0.917
2011 1mu	0.843	0.940
2012 0mu	0.792	0.943
2012 1mu	0.843	0.911

Omu (Received-ongoing)/Received

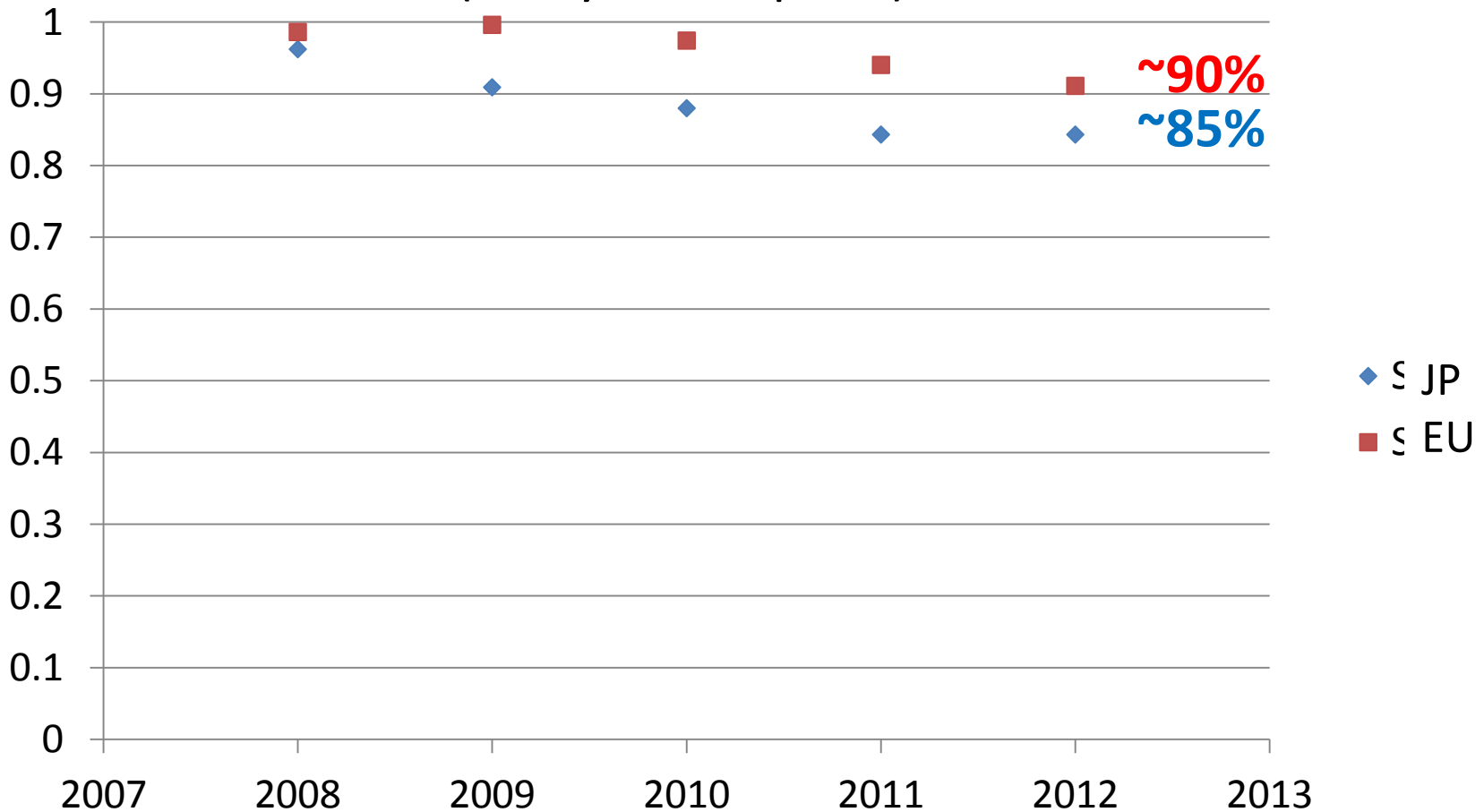
(Analysis complete)



Completeness = (LOCATED+GIVEN_UP+DEAD+NEW_BRICK+CS_RESCAN)/ ALL
Other status should be analysis on-going .

1mu (Received-ongoing)/Received

(Analysis complete)



Completeness = (LOCATED+GIVEN_UP+DEAD+NEW_BRICK+CS_RESCAN)/ ALL
Other status should be analysis on-going .

Comparison with 5th tau paper

Run year	0mu DS	1mu DS	0mu loc	1mu loc
2008	149 +1	542 +1	155 +1	555 +1
2009	253 +2	1020 +4	266 +2	1036 +6
2010	268 +10	968 +32	281 +15	989 +39
2011	270 +21	966 +64	293 +21	1016 +76
2012	204 +19	768 +37	228 +18	818 +47
TOTAL	1144 +53	4264 +138	1223 +57	4414 +169

DS done 5408(5th paper) + 191 → 3.5% increased.

Loc done 5637 + 226

If DS done as same level with 2008+2009,
 additional 119 ev could be expected. (2.2% of 5408)

Summary

- **No** new tau candidate from Nagoya CM.
- CS Analysis to be finished. Final ECC development in week 20th Nov.
- **Progress** from Nagoya CM, **+51 located + 65 Decay search**
1.74 located ev / week , 2.22 decay searched ev / week
roughly **1%** increase of already analyzed till March
- The achievement of completion stays about **87 +1 %** of expected from 2008-2009 efficiency & pot *mass
- Still on going ECC remains **603(6.7%)** out of all 9064 received.
- Remaining 534 JP + 69 EU to be flagged, mainly given up.
- **Final analyzed number of events is going to be fixed .**
- The analyzed Statistics as same counting criteria with 5th paper ,
become **5408+191 ev. (3.5% increase)**

The agenda

- Electron shower detection on CS Matsushita
- Electron recovery scan Hayakawa

- Status Report from Japan Sato
- Status Report from Italia Adele
- Status Report from Russia Svetlana

- Swiss and Turkey have already completed standard analysis and no report this time.

Back up

Orange brick status

Check with the orange brick list in August (Alessandro)

For Japanese 139 CS, all received 38 CS were feedbacked as backtodeceptor.

But 101 CS were not delivered to JP and no feedback were possible.

Some CS could be the recently arrival CSD .

While it takes time to scan/judge by only one SUTS & limited man power.

Probably we need to give up analyzing many of 101 CS in due time.

We will check the overlap with new arrived CSD soon.

For European 216 CS assigned to EU.

Feedback was done for 63 of them.

But the remaining part has to be analyzed (50% were scanned).

Above sentences are slightly modified email answer(16th Sep) to Alessandro .

Event with at least one brick not flagged

Event no.	Year	Assignment
300	2010	UE
376	2011	UE
406	2012	UE