

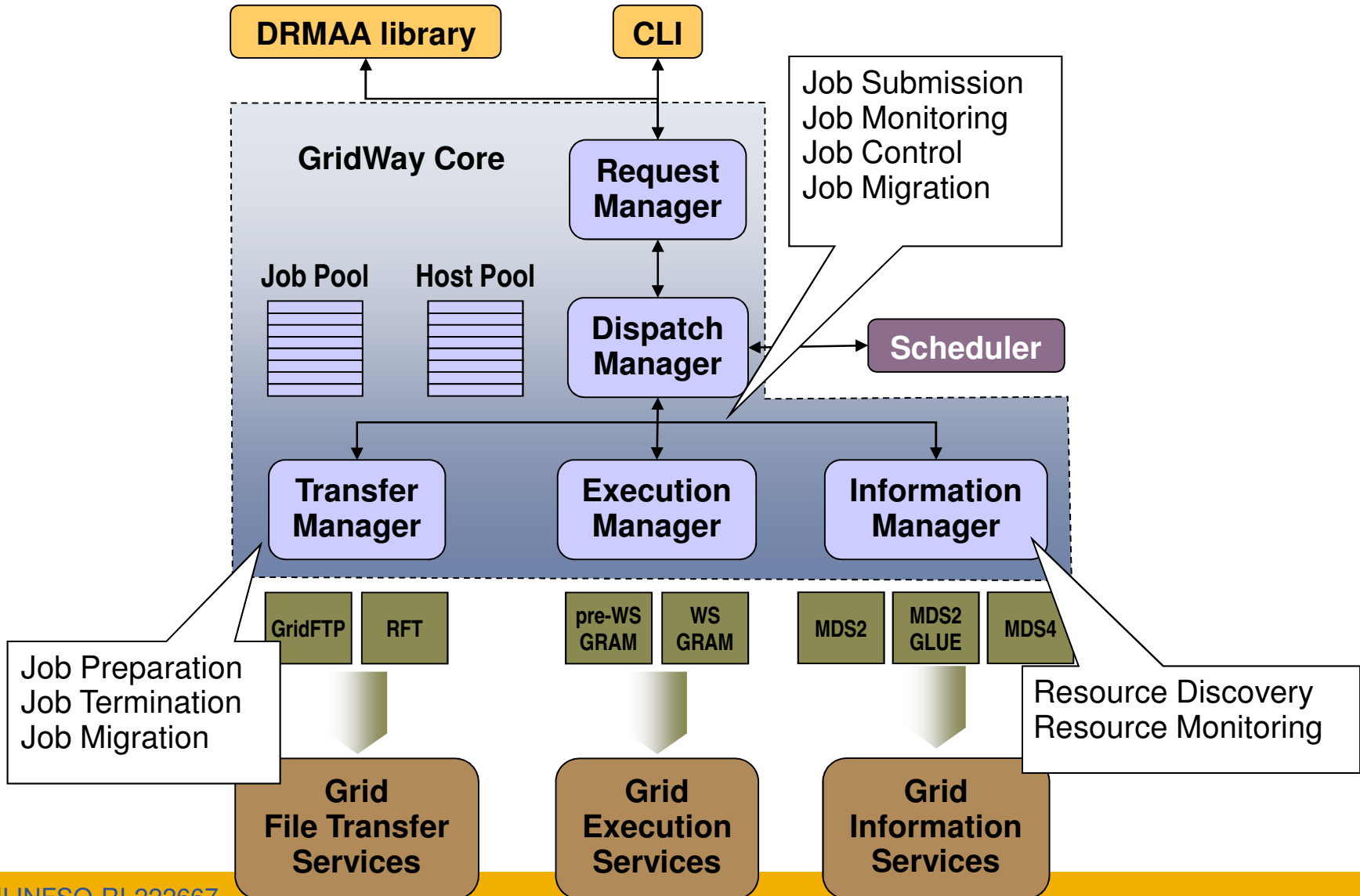
# Novelties and Features around the GridWay Metascheduler Project

*José Luis Vázquez-Poletti (UCM)*

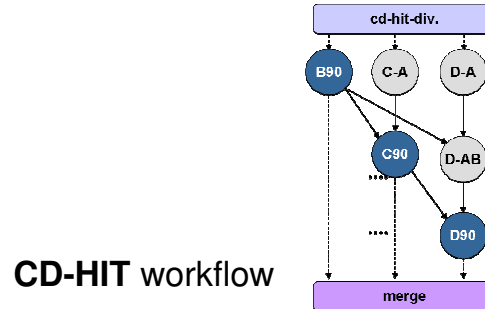
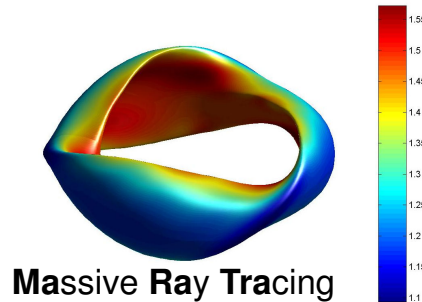
**EGEE'09 Conference (Barcelona)**  
**21-25 September 2009**

- 1. GridWay in a Glance**
2. Gridway News

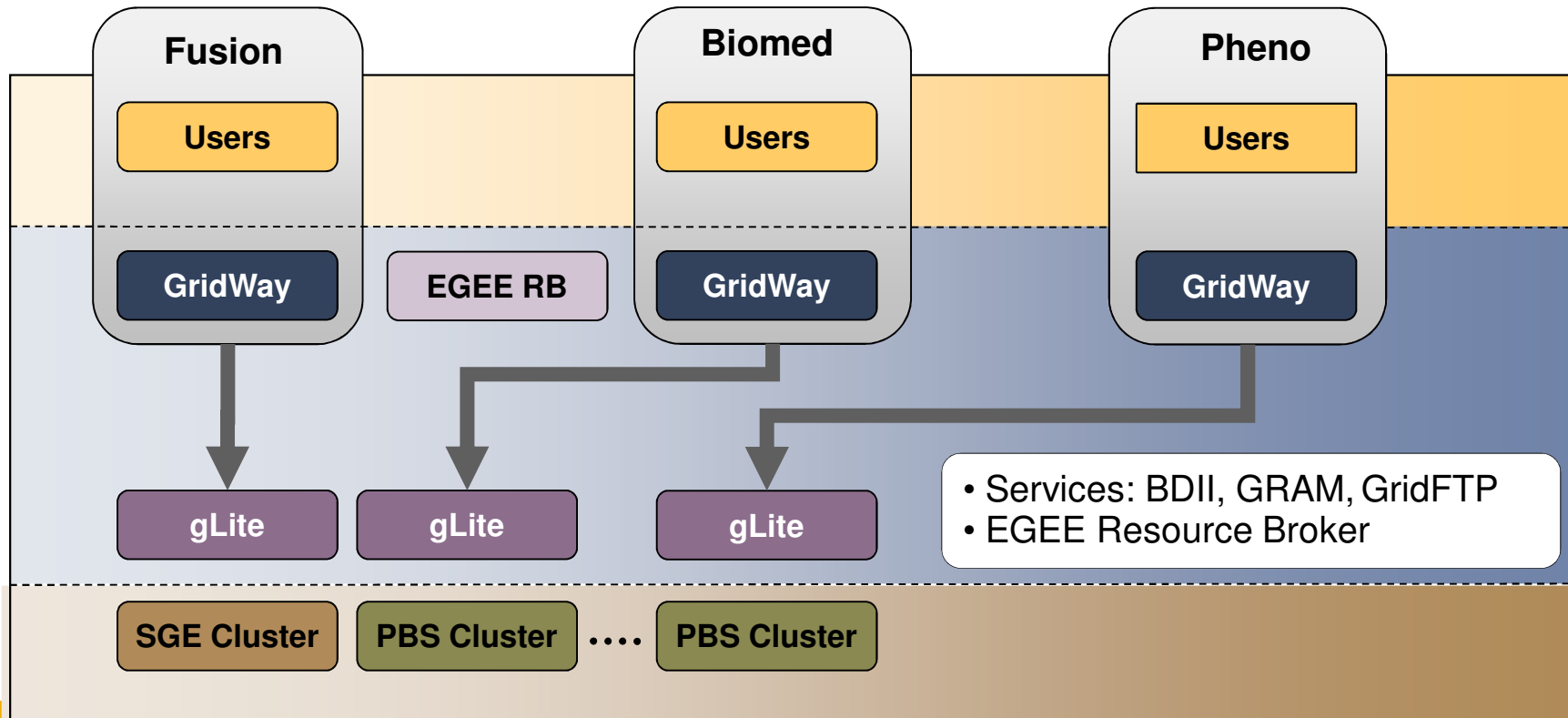
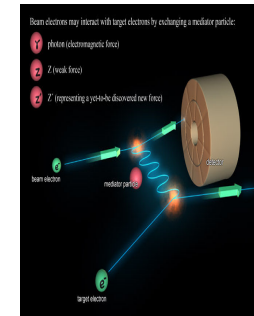
## GridWay Internals



GridWay is being used on EGEE for...



**AITALC code**  
Bhabha



1. GridWay in a Glance
- 2. Gridway News**

## Work ongoing on the new version 5.6

---

### Bug fixing campaign

- Annoying (check proxy) when proxy is there
- Capture complete `HOSTNAMES` for messaging
- Include full `QUEUE_ACCESS` info for all VOs
- ...

### LDAP server discovery

- Faster and unique resource discovery

### Output of cli available in XML format

- Allowing easy implementation of add-ons
- Following a well-defined XML Schema (validation)

## Google Summer of Code 2009 Projects

---

- 4th Edition – <http://code.google.com/soc/>
- Three-month projects to develop and learn free open source code
- 1,000 Students around the world – 150 mentoring organizations
- **2 accepted projects within the Globus Alliance**

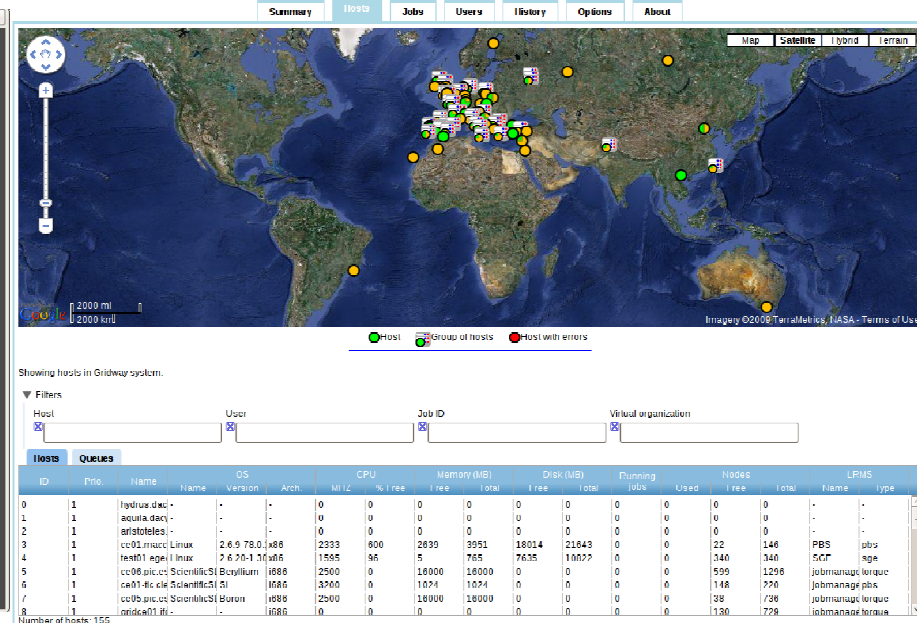
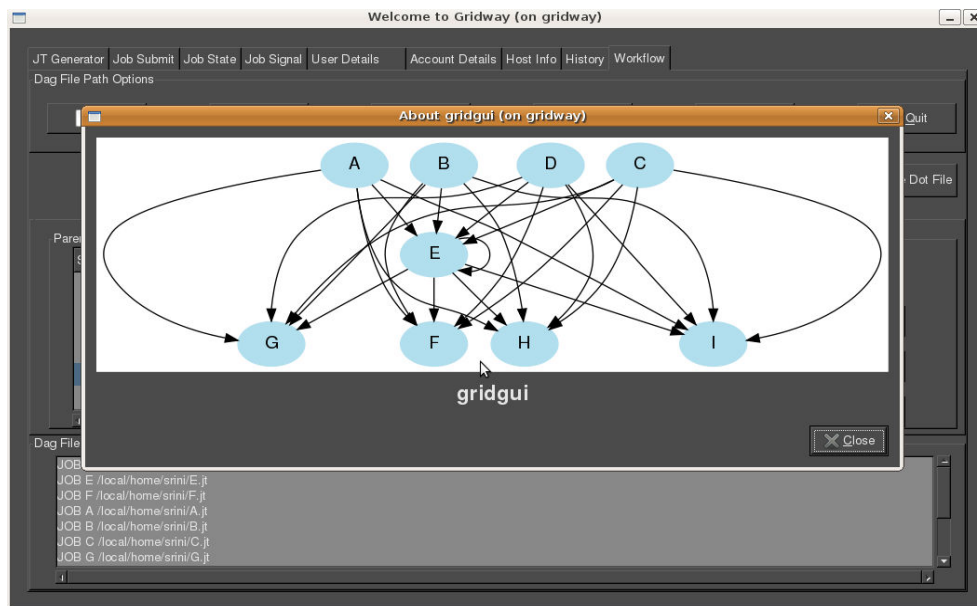


## GUI for GridWay

- Srinivasan Natarajan (California State University)
- Mentor: J.L. Vázquez-Poletti
- Easy to use GUI
- Based on GTK+

## GridWay + GoogleMaps mashup

- Carlos Martín (Universidad Complutense de Madrid)
- Mentor: A. Lorca
- Information from GridWay output geolocalized
- Based on Google Web Toolkit





## New web page design

### A renovated web portal has been designed

According to the new image emerging at dsa-research.org

- **Simplify** user interaction
- Find out the content **faster**
- Paying attention to improve the existing **good documents**
- To be **launched soon**

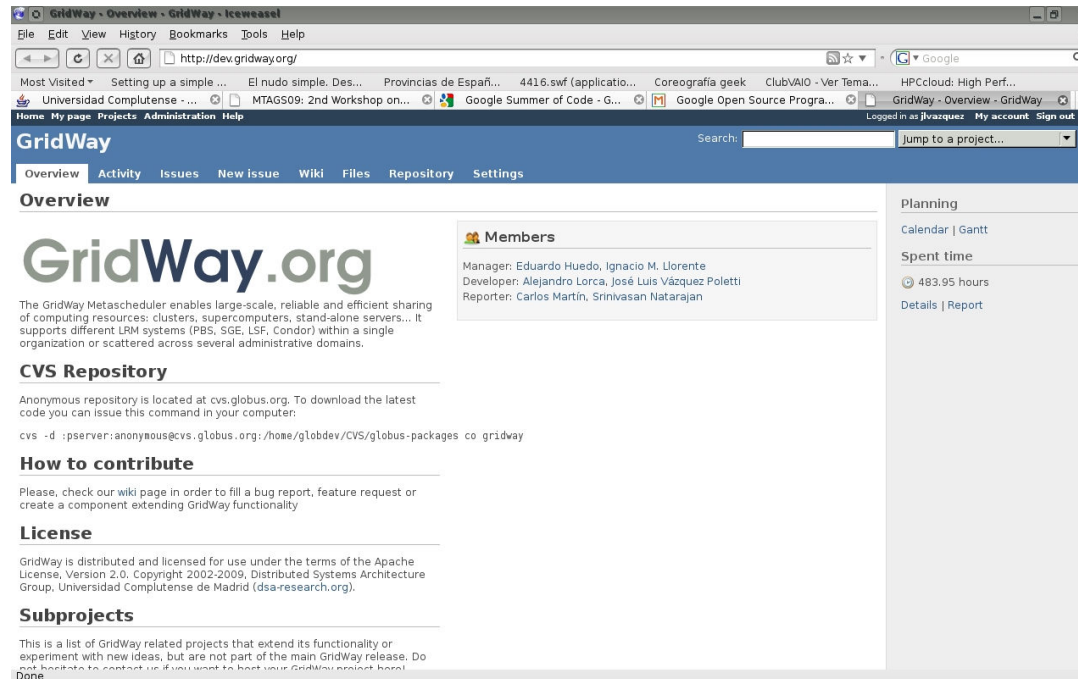


## New Development Portal

### Redmine Project Management System

Available at <http://dev.gridway.org/>

- Bug reporting and solving even faster
- Easy creation and management of related components
- Better interaction between users and developers

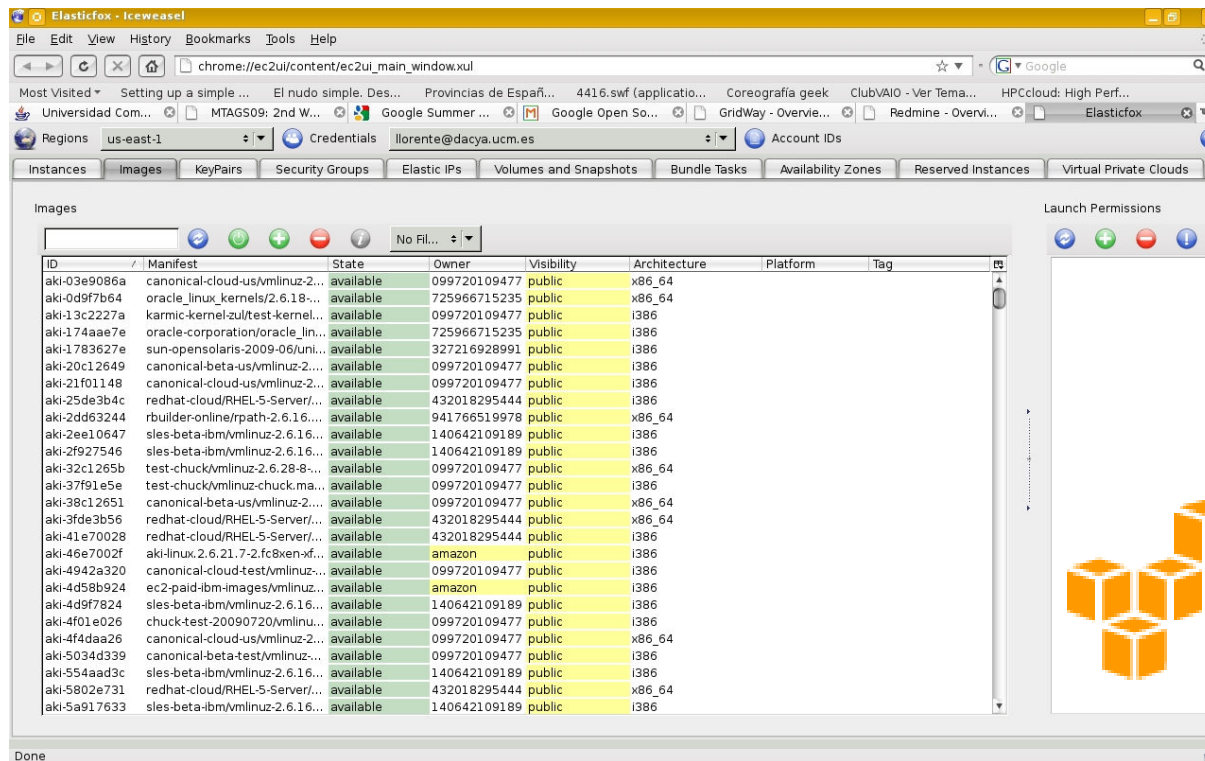


## Grid meets Cloud: GridWay on EC2

### AMI on Amazon Elastic Compute Cloud with GridWay installed

- Easy to deploy
- Easy to configure

**Will be Public soon!**



**¡Muchas gracias!**

**Thank you  
for your attention!**