

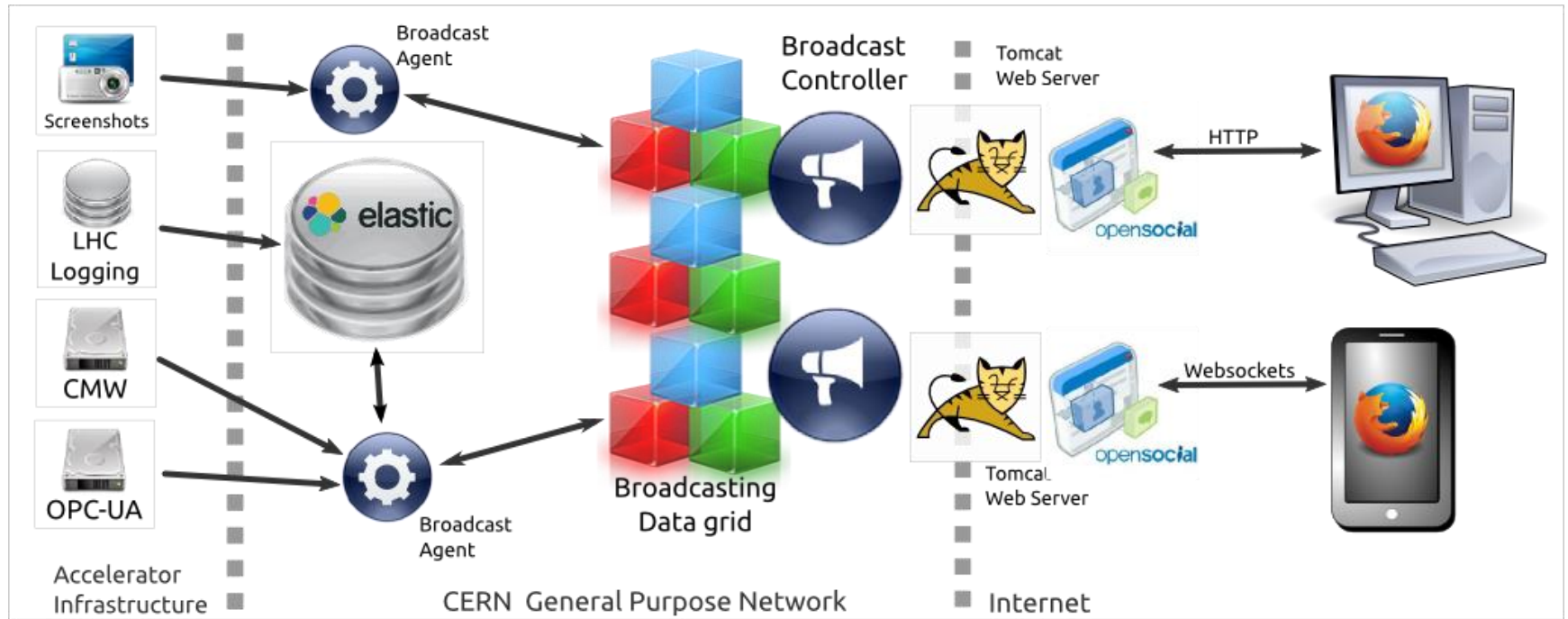
Web Broadcasting with C2MON

Brice Copy – Web Dev Workshop – 04 Oct 2016

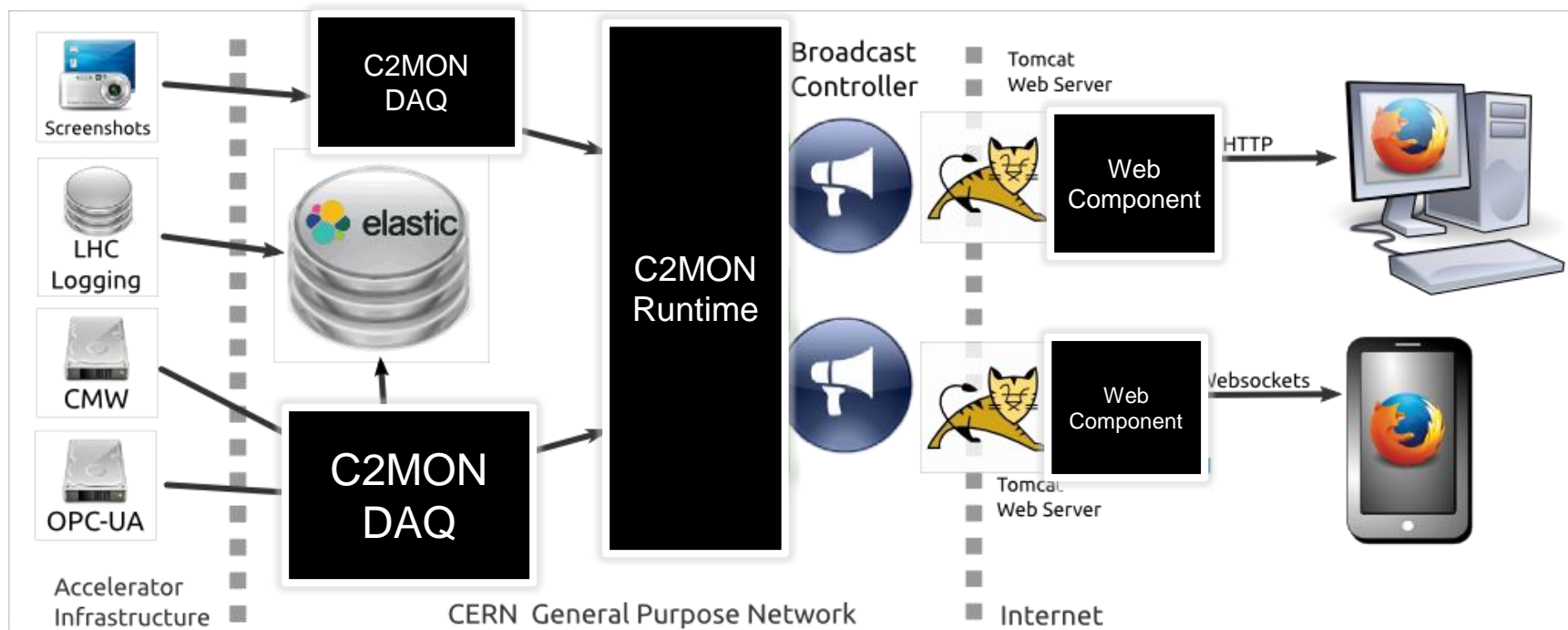
Overview

- Current architecture
- Benefits of C2MON vs current Broadcast Agents
- C2MON architecture intro
- Simplifying web development
- Roadmap

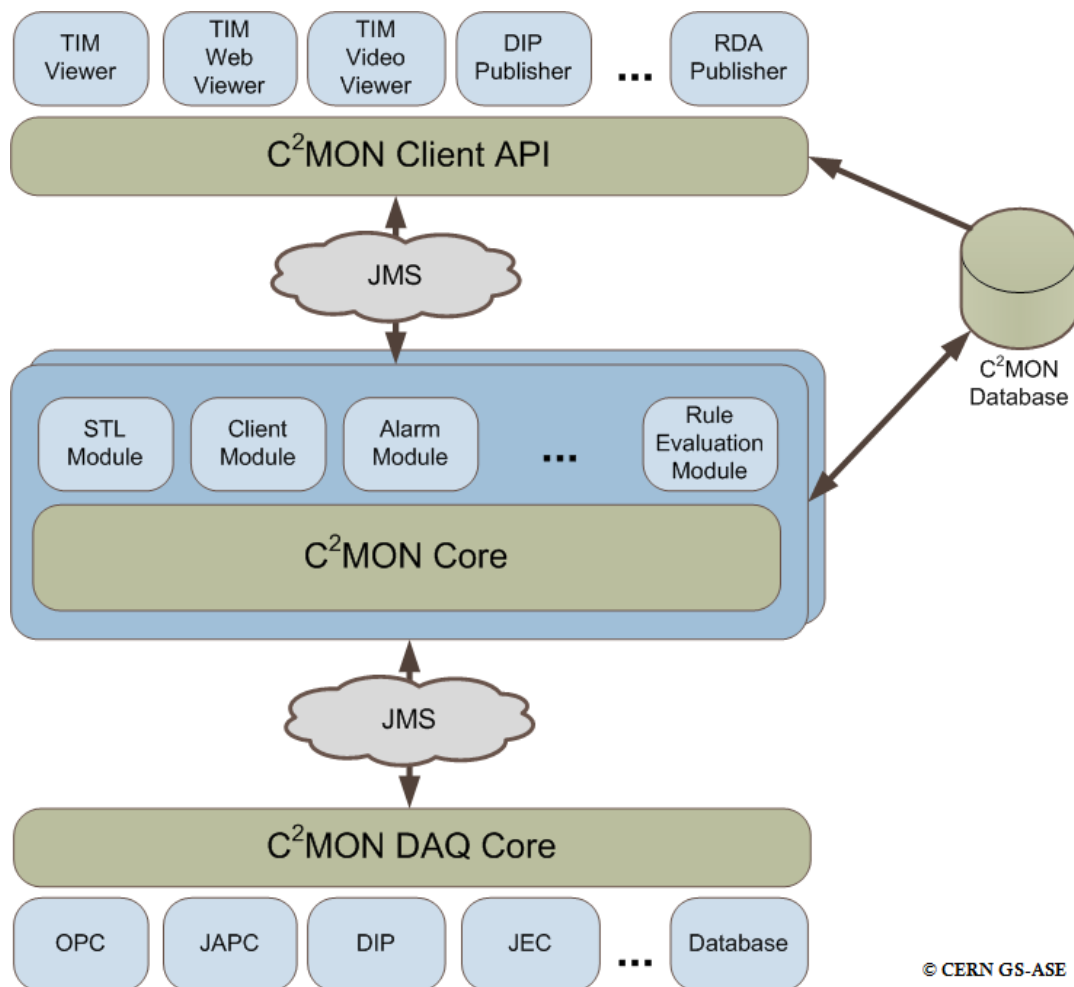
Current dashboard architecture



C2MON based dashboard



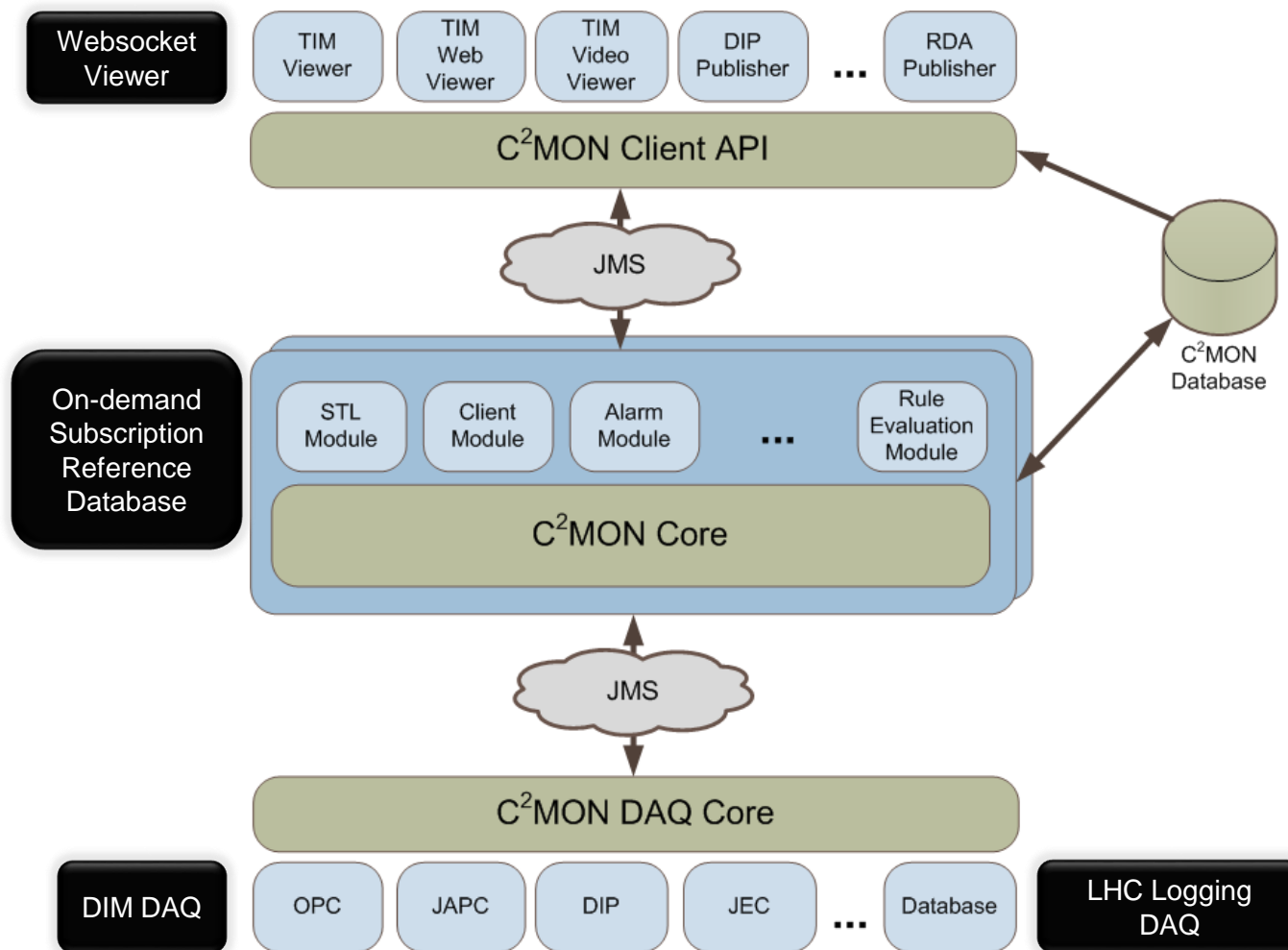
C2MON Architecture Intro



Benefits of C2MON

- C2MON DAQ is a solid, proven piece of architecture :
 - 400 million data point updates a day.
 - Metadata support for extensive information about data quality.
 - 30 days archiving of traffic, with de-duplication, smoothing.
- C2MON data acquisition process is well established :
 - MODESTI process provides an approval and notification workflow.
- C2MON offers archiving :
 - HSQLDB or Oracle archiving for relational data storage
 - ElasticSearch archiving is being rolled out (BASICS talk on Friday about this).
 - Using Kibana / Grafana for quick dashboard rollouts.

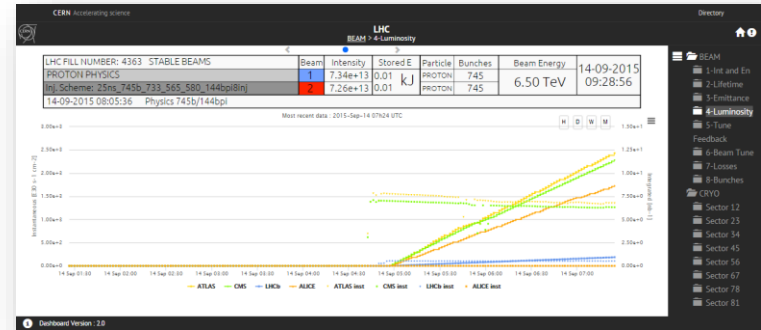
C2MON Additions



Simplifying web development

Current dashboard relies on Opensocial :

- To package reusable visualizations
- To pass parameters between visualizations
- To orchestrate page navigation

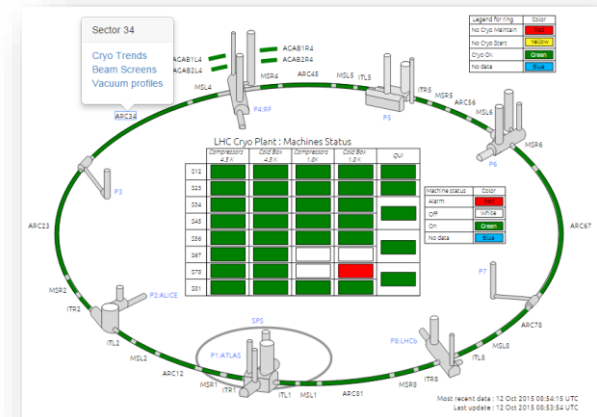


Opensocial Constraints :

- Still relies on IFRAME tags (security, message passing is very complicated)
- Is not a first class citizen inside the Web Browser

Web Components :

- Custom HTML tags that can be added to the page like
- any other, emits standard DOM events to exchange data...
- But comes with its own security context, Javascript runtime
- context.



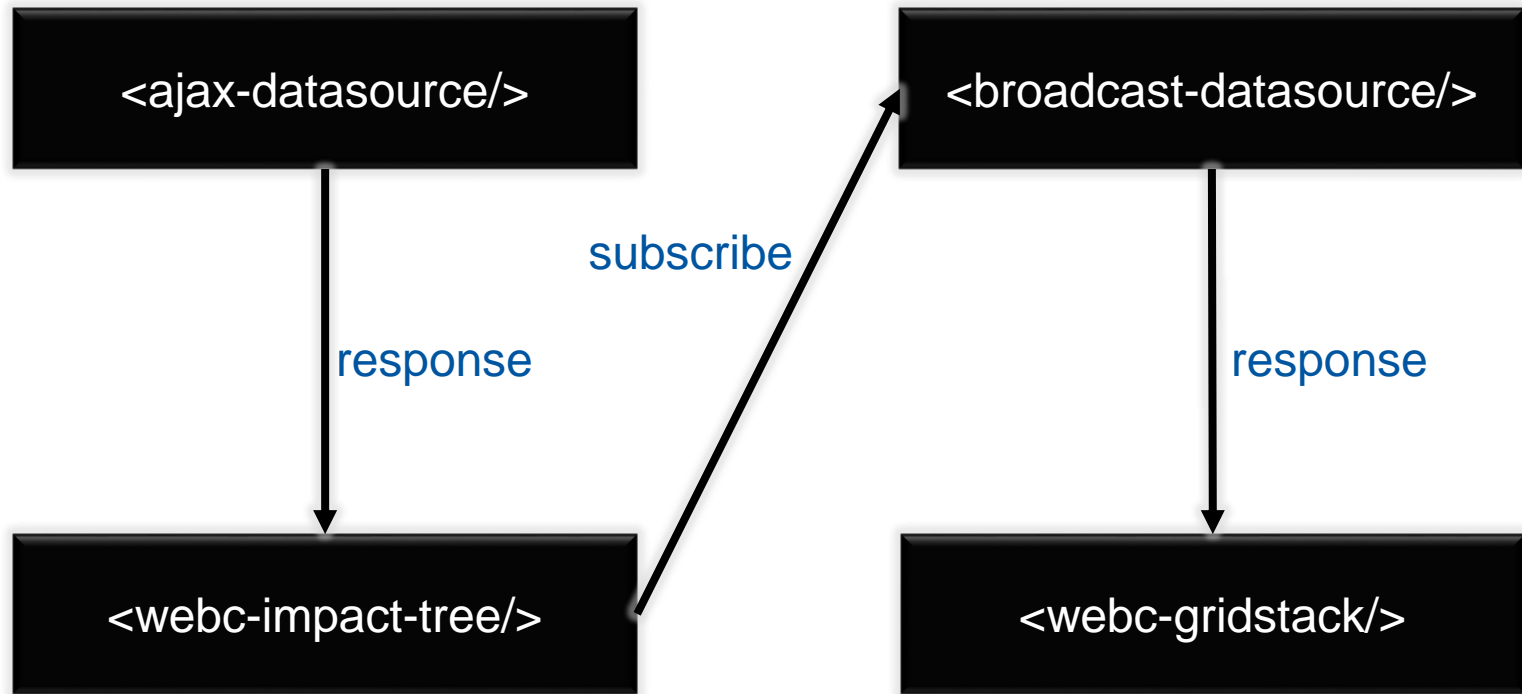
Dashboard Pages with Web Components

Idea : Anyone with an HTML editor can layout tags

- Edit tag properties to setup :
 - Data subscriptions
 - Visualization formatting

- If required, add Javascript functions in the host page :
 - To translate data (e.g. go from NESTED to FLAT data format)
 - To perform fine-grained formatting (e.g. use D3 to update tree nodes)

Anatomy of a Dashboard page



Questions ?