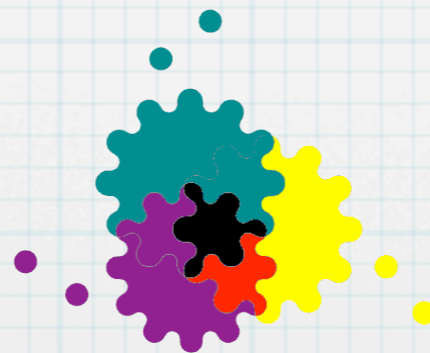


NL NGI Post-EGEE

Jeff Templon
pre-GDB, 12 may 2009



BiG Grid

the dutch e.science grid

NL Services

* Operation Coord: OAT
0.2 FTE

* Policy Development
0.4 FTE

* NL ROC 6 FTE

* Nagios (thru OAT)

* Deployment support
(SA3 + pilots) 2 FTE

* Security Middleware
1.5 FTE

* Operational Security
1.5 FTE

NL NGI now

- * Dutch Computer Facilities Funding Agency NCF serves as contact point and de facto 'legal' NGI
- * BiG Grid project, founded by Dutch HEP and bioinformatics communities together with NCF, does the work

Tier-1 representation

- * Nikhef is a core partner, and SARA operational partner, in BIG Grid
- * Nikhef and SARA are involved at highest level in design and implementation of NL NGI
- * Plan is for NGI to continue Tier-1 service
- * NL's Tier-2s are all external to the Netherlands

ROC Evolution

- * Benelux ROC tasks specific to NL already provided by BiG Grid.
- * Ditto for daily NL operations.
- * Details have been asked many times by EGEE and EGI

EGI

- * NL intends to sign the EGI MoU
- * NL intends to be a full member of EGI
- * This presupposes that the proposal is relatively free of bovine waste
- * The Tier-1 can not provide additional services without additional funding

Other EGI issues

- * Other particular issues to the country or general problems?
- * strong view that EGI should not be held hostage by middleware
- * HEP needs to use the (good) front door like everybody else.

Longer Term

- * Tier-1 supported via BiG Grid until mid 2011
- * National plan now under consideration for consolidation of Tier-1, Grid, network and super resources in sustainable national e-Science infra
- * proposed to Dutch government in Dec 2008.
- * Probably results in a new NL NGI