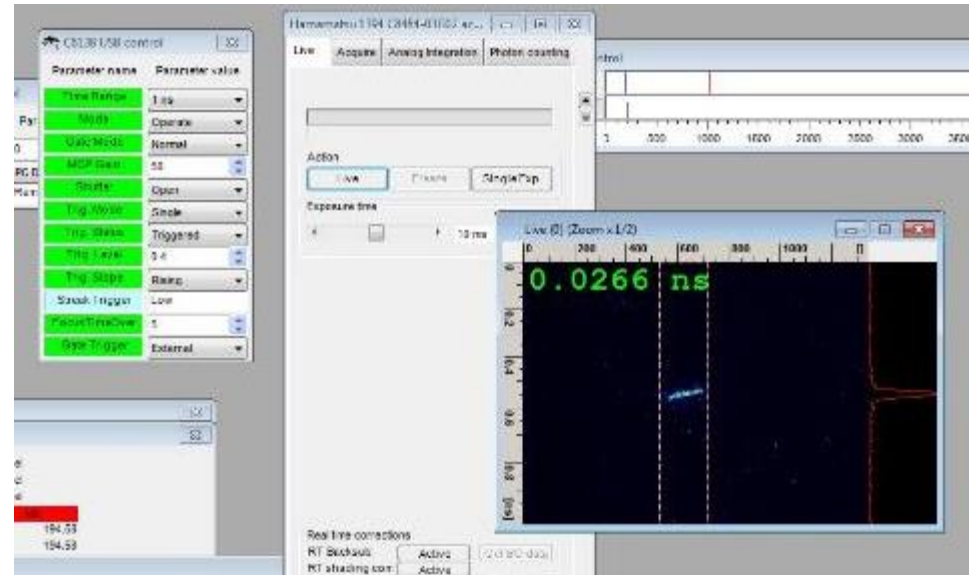


# Update from BI

11<sup>th</sup> AWAKE SBLM, 29/9/2016

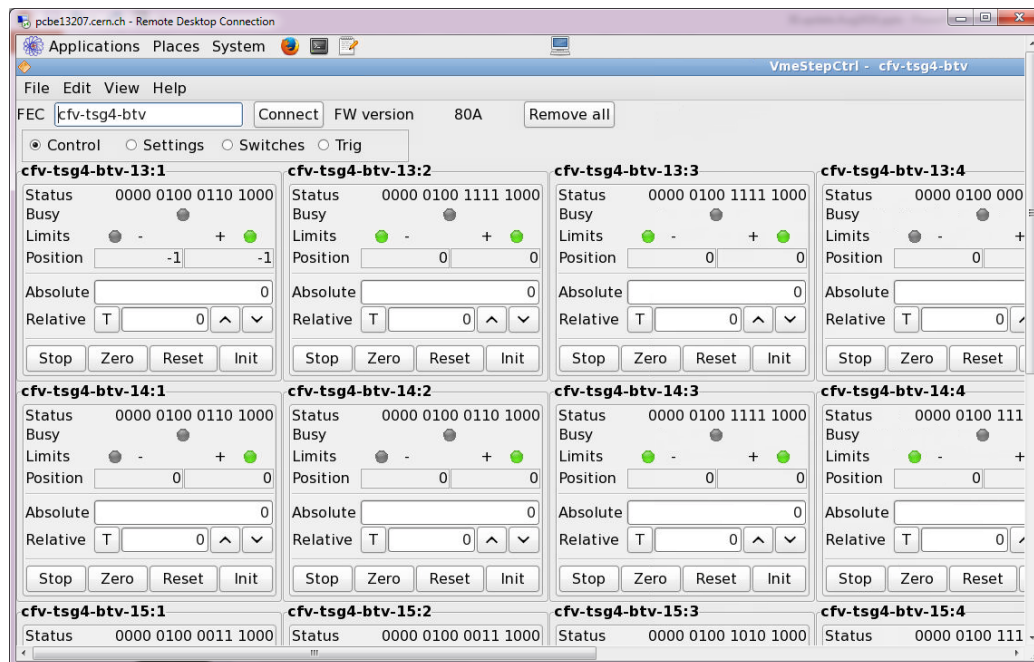
# Streak commissioning

- AWAKE laser pulse observed on the BI streak (1 ns window), 24/8/2016
- Overall (estimated) jitter on the streak: **10 ps** (13 ps based on 10 images). **OK!**
- To be completed:
  - Remote operation
  - Go to shorter temporal windows (50 ps window) to be compared with MPP



# Motors

- Three cards now installed: 2 X MPP, 1 X BI. 5 motors per card.
- For BI card, instantiation completed (devices accessible via FESA).
- For MPP cards, instantiation pending (different firmware). More news ASAP.
- Expert application:  
`/user/bravin/bin/VmeStepCtrl -c cfv-tsg4-btv`
- Launch with configuration file:  
`/user/bravin/bin/VmeStepCtrl -f <filename>`



# BTVs

- All BTVs operational.
- BTV.412350: need to re-align after replacement of mirror motor.
- For (laser) alignment, possible to have a (remote) video feed:
  - Access CERNTSBEWS (rdesktop login required)
  - Open \\cs-ccr-samba1\spsop and launch vlc-vod-btv