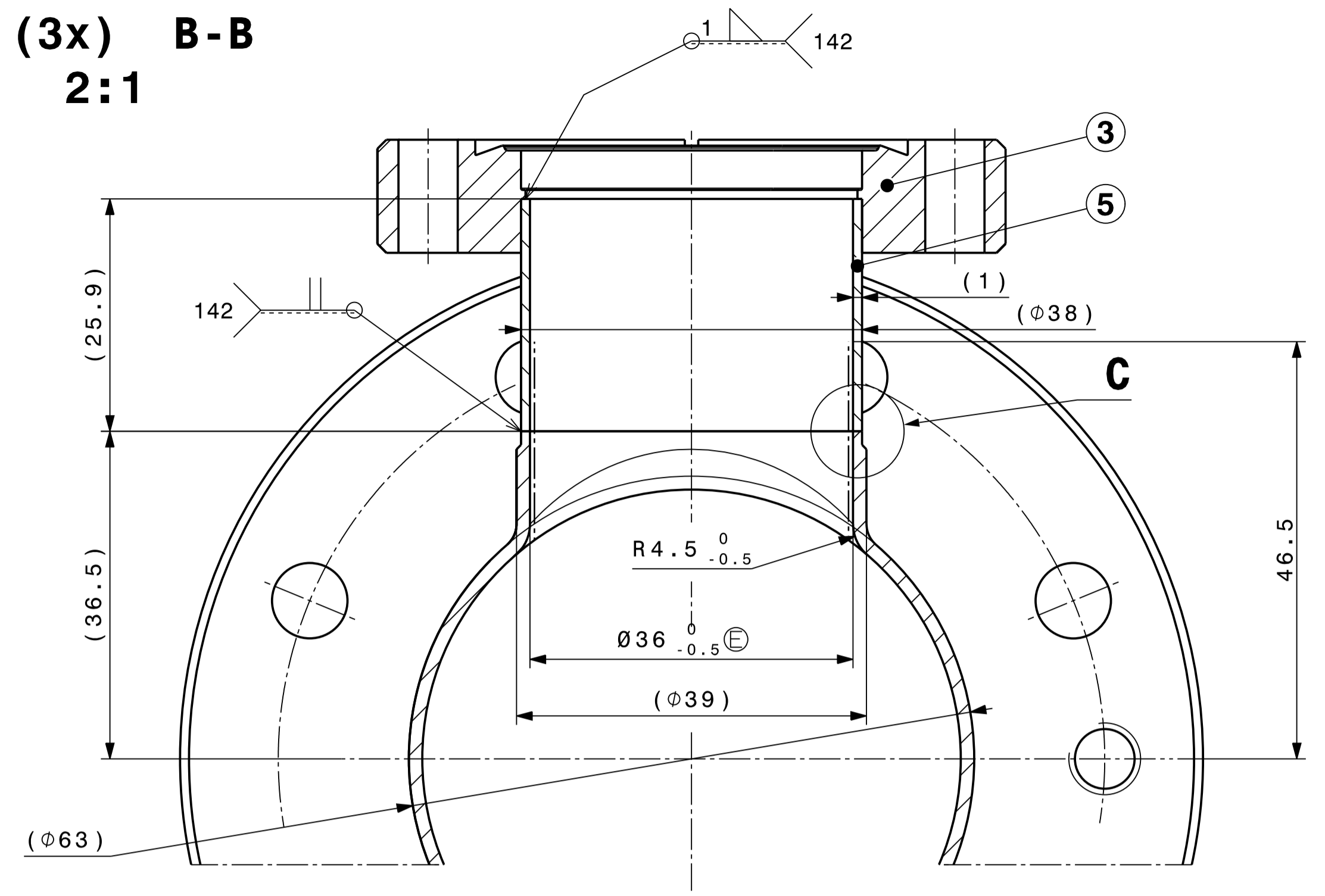
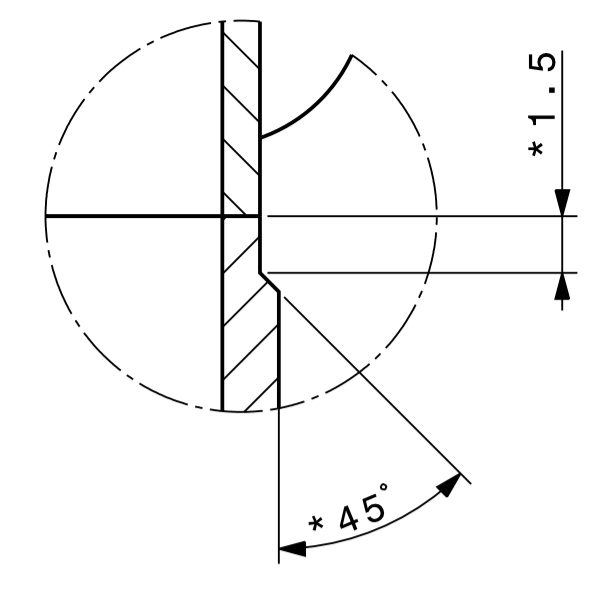


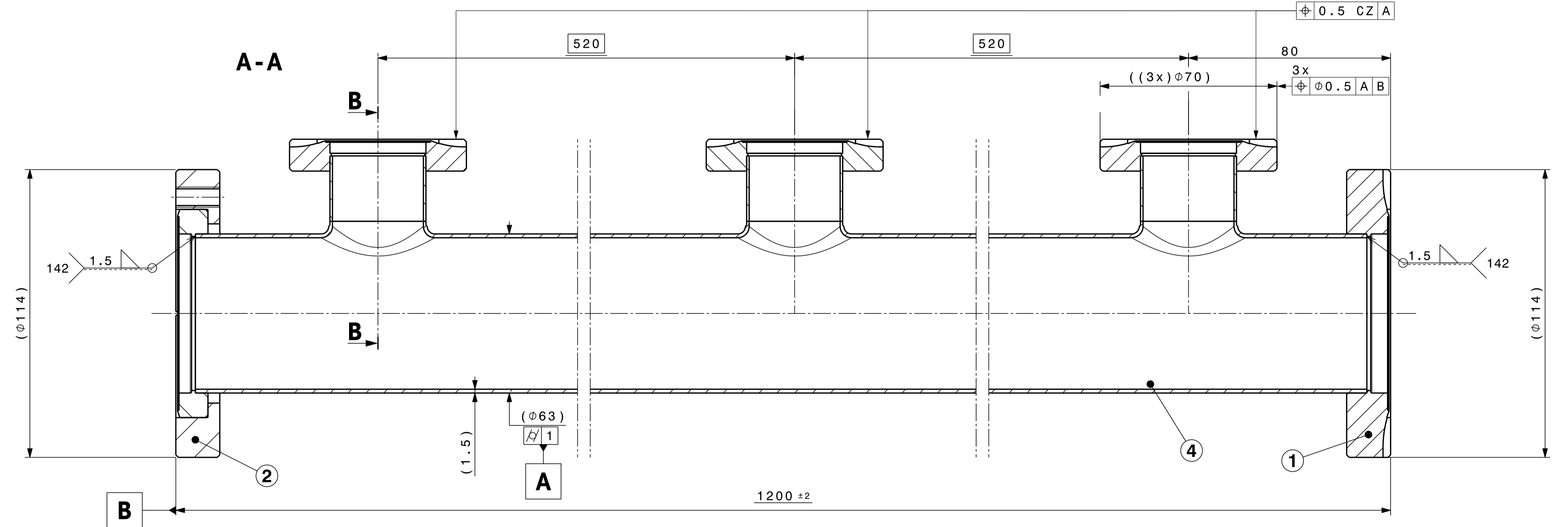
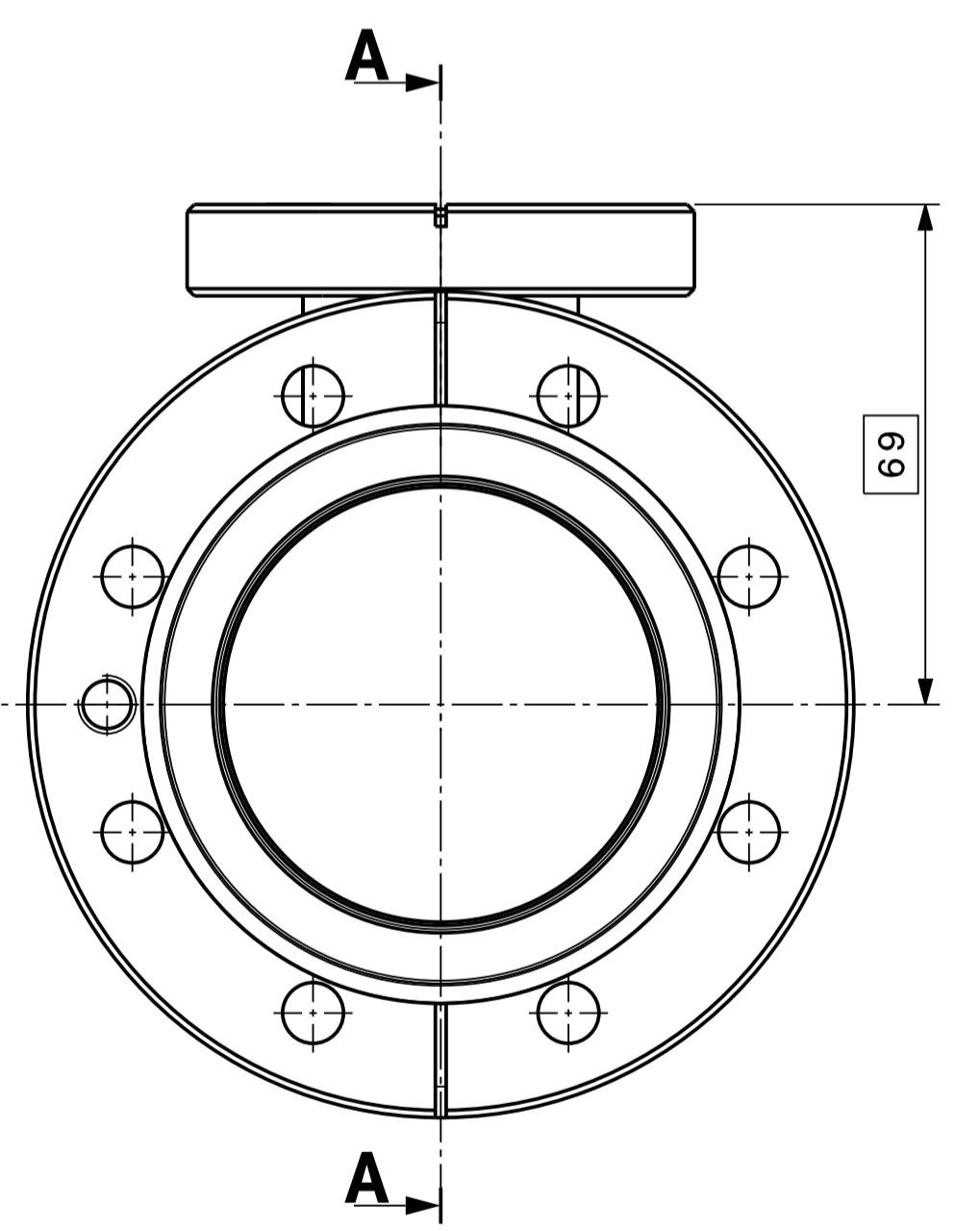
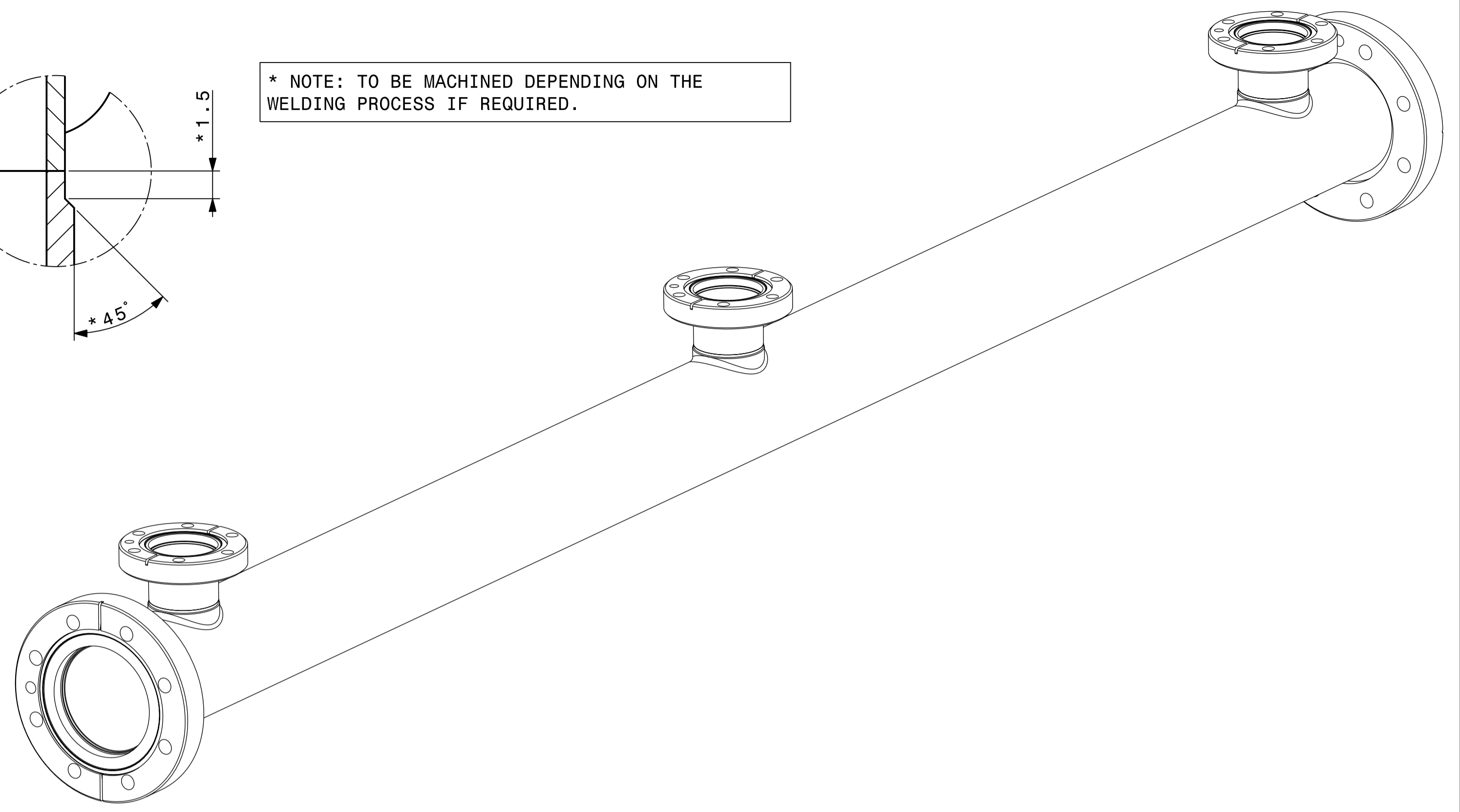
(3x) B-B
2:1



C
5:1



* NOTE: TO BE MACHINED DEPENDING ON THE WELDING PROCESS IF REQUIRED.



Mass: 5.3 kg

BEAM VACUUM SPECIFICATION SEE
EDMS 1221536

UNLESS OTHERWISE MENTIONED, APPLICABLE ISO GPS STANDARDS
ARE THOSE PRIOR TO 2010-08-01 REGARDLESS OF THE DRAWING DATE

QTY	DESCRIPTION	POS	MAT.	OBSERVATIONS	REF.CERN
3	ROUND TUBE Ø38/36	5	St. Steel 316L (1.4435)	ISO 1127 ST0452136	39.36.05 640.8
1	ROUND TUBE Ø63/60	4	St. Steel 316L (1.4435)	ISO 1127 ST0452102	39.36.05 688.2
3	FIXED UHV FLANGE DN40	3	St. Steel 316L (1.4429)	LHCVIEPA0004 ST0617262	
1	ROTATABLE UHV FLANGE DN63-Ø60	2	St. Steel 316L (1.4429)	LHCVIEPA0003 ST0605367	
1	FIXED UHV FLANGE DN63	1	St. Steel 316L (1.4429)	LHCVIEPA0008 ST0619721	

ENS/ASS	S.ENS/S.ASS
ISO 2768-mK	ISO 13715
Vacuum Instrumentation, Electron cloud, Prototype, type A	
VACUUM CHAMBER	
SCALE: 1:1	
REPLACES	
NON VALABLE POUR EXECUTION NOT VALID FOR EXECUTION	
LHCVIEPA0002	1

ORGANISATION INTERNATIONALE POUR LA RECHERCHE NUCLEAIRE
 EUROPEAN ORGANIZATION FOR NUCLEAR RESEARCH
 THIS DOCUMENT IS UNCLASSIFIED AND IS AVAILABLE FOR REPRODUCTION AND DISTRIBUTION WITHOUT FURTHER PERMISSION FROM IAEA
 THIS DOCUMENT IS UNCLASSIFIED AND IS AVAILABLE FOR REPRODUCTION AND DISTRIBUTION WITHOUT FURTHER PERMISSION FROM IAEA