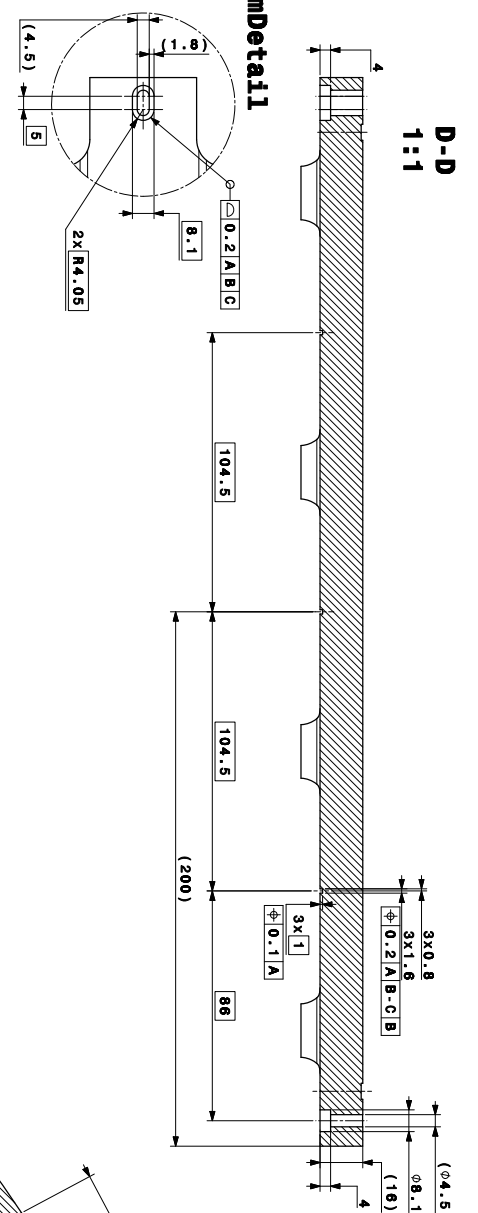
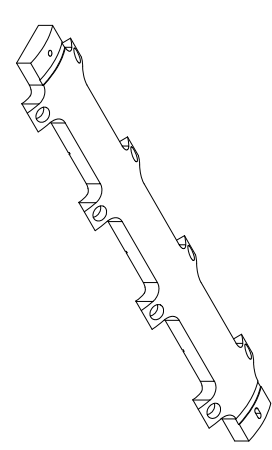
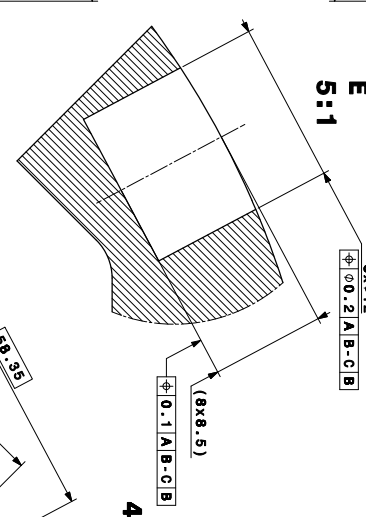


1	2	3	4	5	6	7	8	9	10	11	12	13	14	15	16	
A	REVISED/DATE	REVISED/DATE	REVISED/DATE	REVISED/DATE	REVISED/DATE	REVISED/DATE	REVISED/DATE	REVISED/DATE	REVISED/DATE	REVISED/DATE	REVISED/DATE	REVISED/DATE	REVISED/DATE	REVISED/DATE	REVISED/DATE	REVISED/DATE
	NO./NAME	NO./NAME	NO./NAME	NO./NAME	NO./NAME	NO./NAME	NO./NAME	NO./NAME	NO./NAME	NO./NAME	NO./NAME	NO./NAME	NO./NAME	NO./NAME	NO./NAME	NO./NAME
	ZONE	ZONE	ZONE	ZONE	ZONE	ZONE	ZONE	ZONE	ZONE	ZONE	ZONE	ZONE	ZONE	ZONE	ZONE	ZONE
	MODEL UPDATED	MODEL UPDATED	MODEL UPDATED	MODEL UPDATED	MODEL UPDATED	MODEL UPDATED	MODEL UPDATED	MODEL UPDATED	MODEL UPDATED	MODEL UPDATED	MODEL UPDATED	MODEL UPDATED	MODEL UPDATED	MODEL UPDATED	MODEL UPDATED	MODEL UPDATED
	MODIFICATION	MODIFICATION	MODIFICATION	MODIFICATION	MODIFICATION	MODIFICATION	MODIFICATION	MODIFICATION	MODIFICATION	MODIFICATION	MODIFICATION	MODIFICATION	MODIFICATION	MODIFICATION	MODIFICATION	MODIFICATION

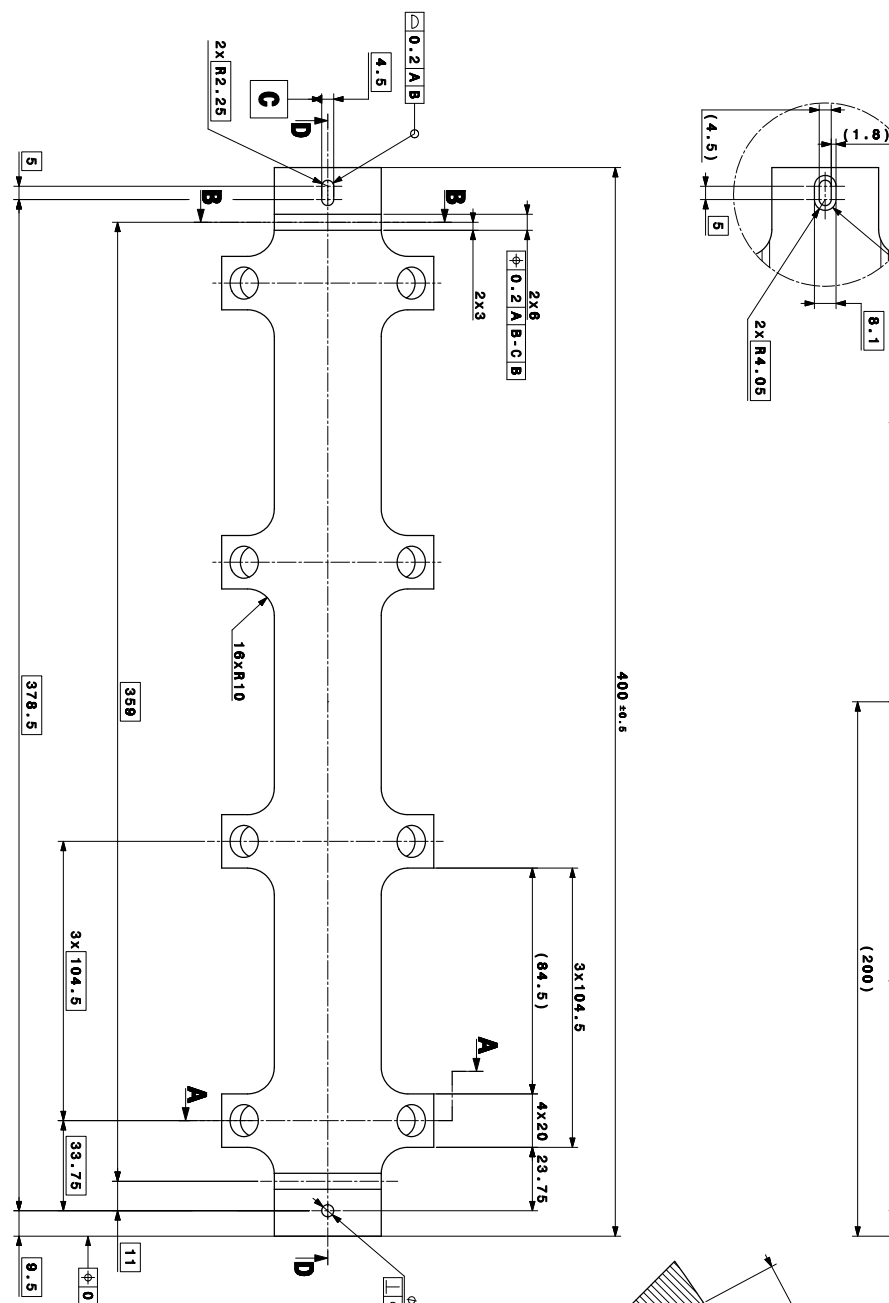
# D-D 1:1



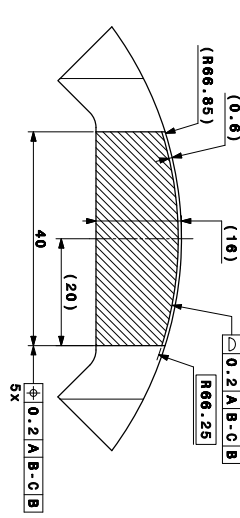
# E 5:1



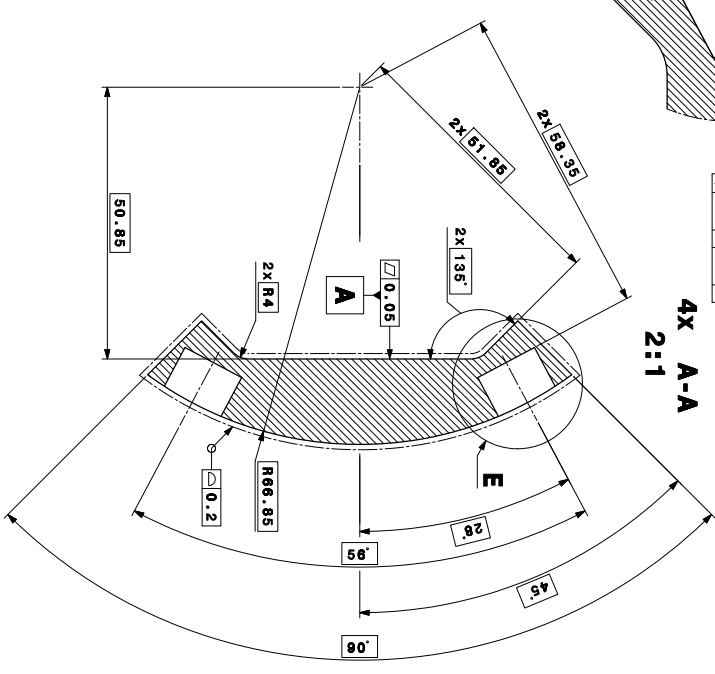
# BottomDetail 1:1



# 2x B-B 2:1



# 4x A-A 2:1



<b>Mass: 4.54 kg</b> UNLESS OTHERWISE MENTIONED, APPLICABLE ISO 9001 STANDARDS ARE THOSE PRIOR TO 2000-08-01 REVISIONS OF THE DRAWING DATE	
1 DESCRIPTION ENG/DES	1 Part S. ENG/DES
130 2786-AK M3.3 130 13715 0.3 14.3	Tungsten OBSERVATIONS 130 13715 0.3 14.3
TUNGSTEN SHIELDING_16mm-V2 FOR CL10	SCALE C. GUNDEL 2017-02-17 RELEASED C. GUNDEL 2017-03-13 NO. OF REVISIONS 1 112
PROJECT ENGINEER INCHARGE LHC/VS/MSH0002 1 A	PROJECT ENGINEER INCHARGE LHC/VS/MSH0002 1 A