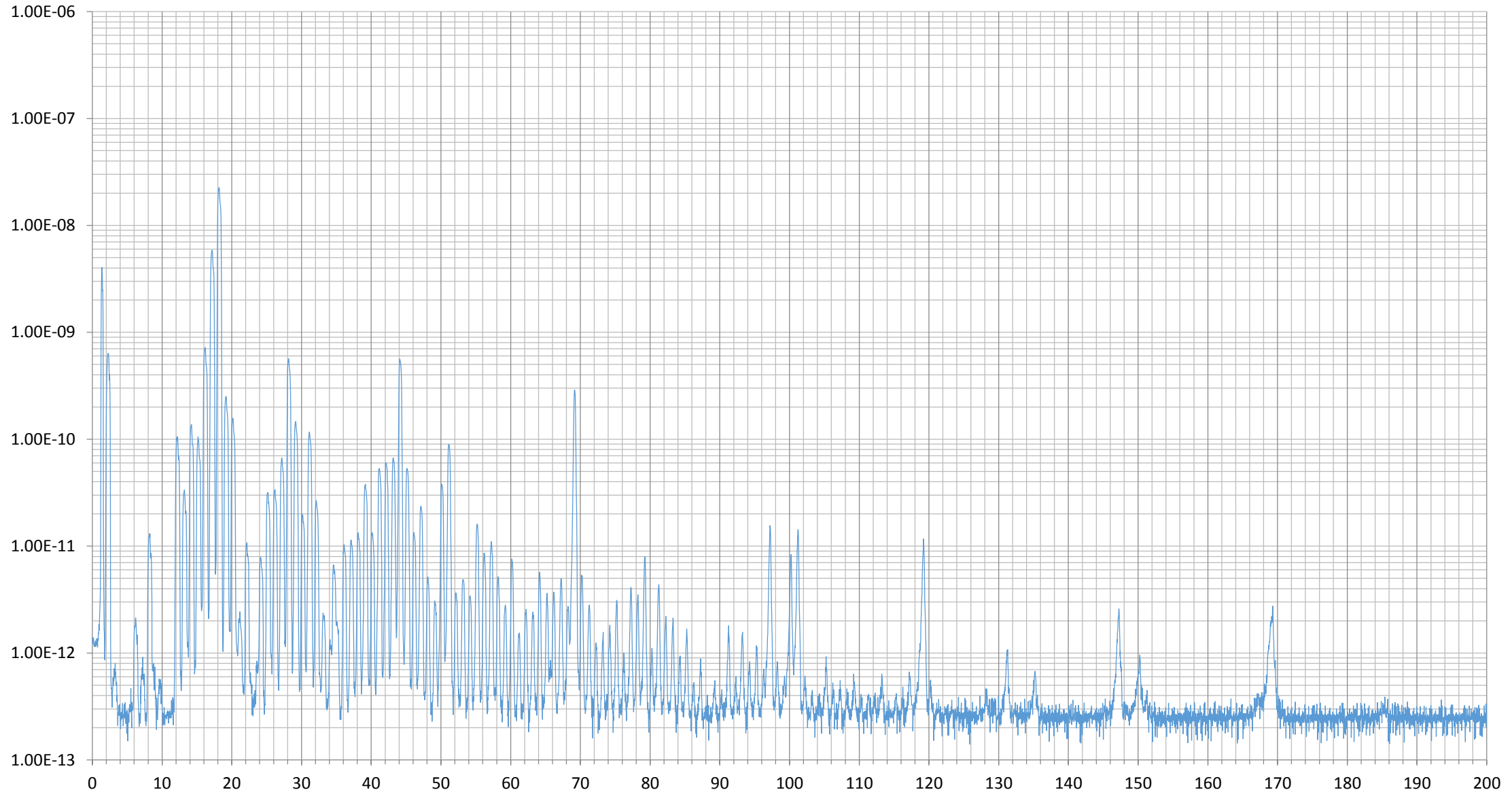


*Identify composition of residual gas spectra*

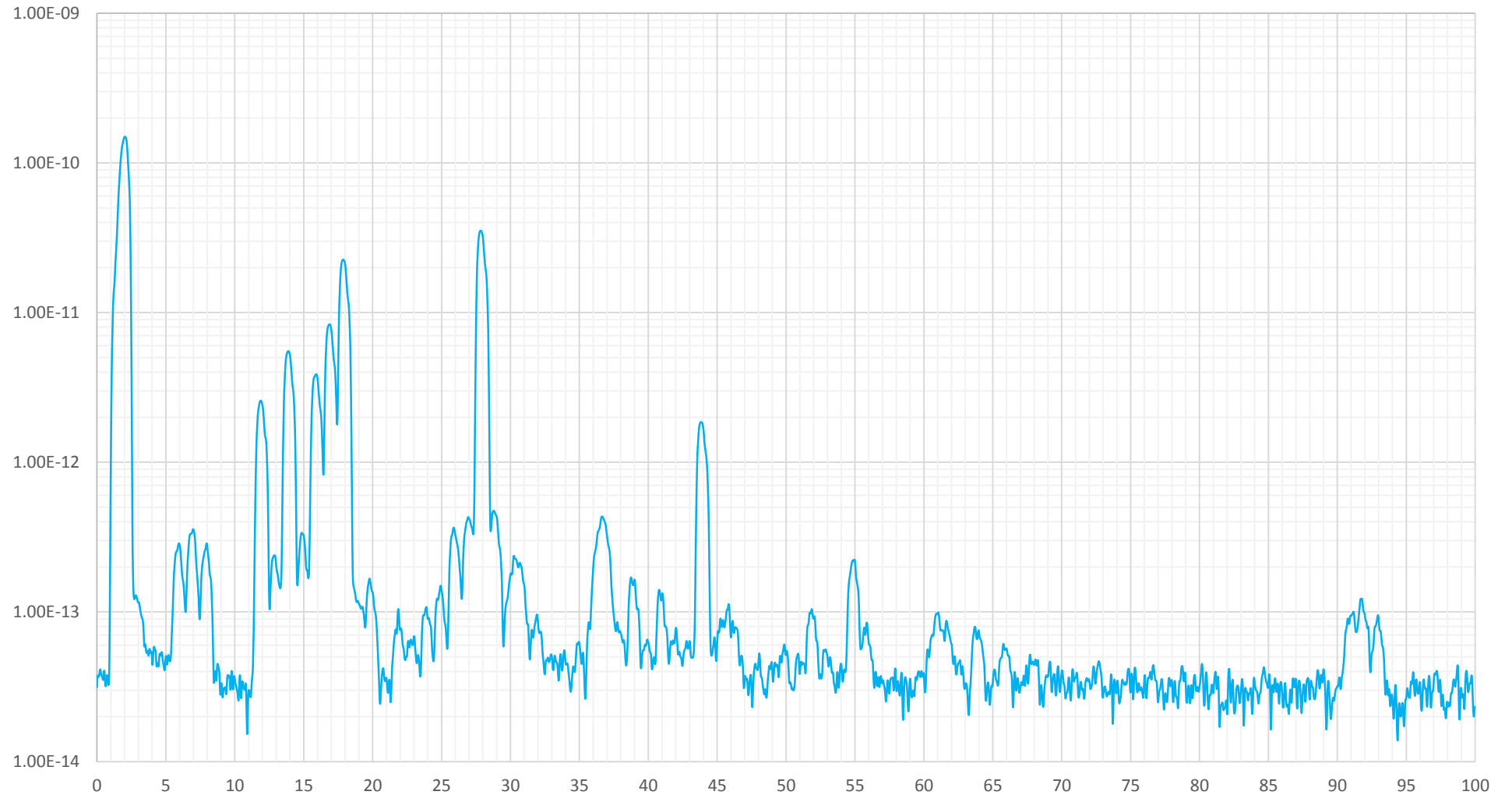
What are the problems with those spectra

## Case 1



Residual gas  
spectrum on a small  
test setup

## Case 2

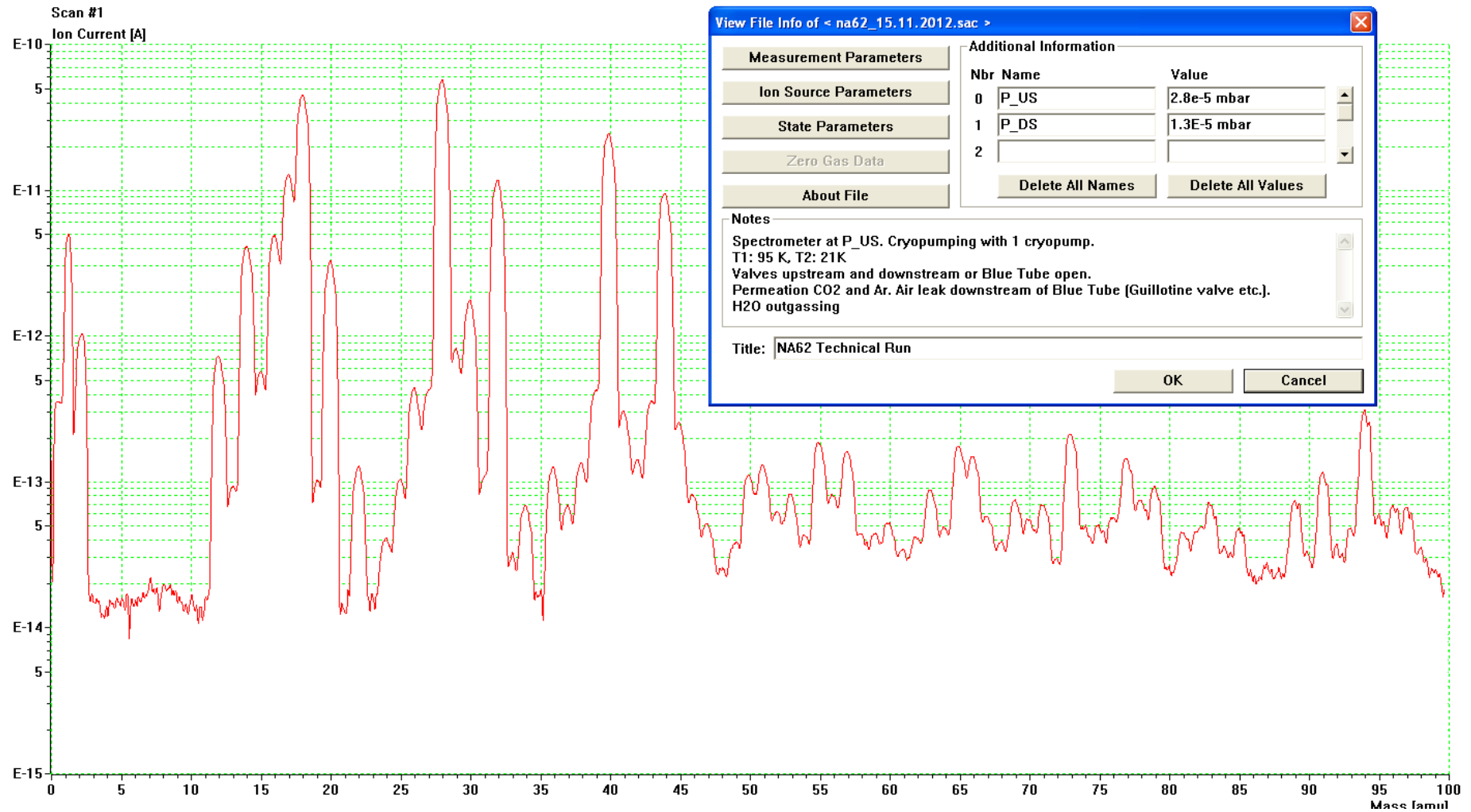
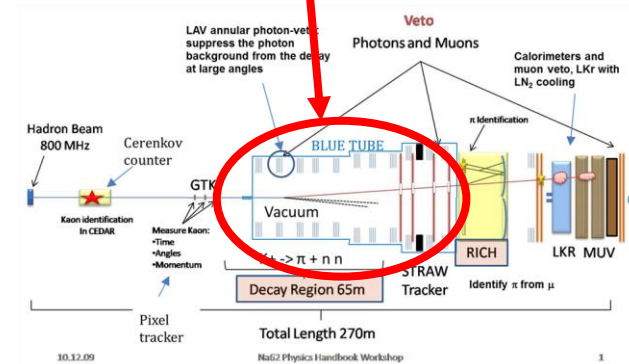


## Case 3

### Measured Spectrum NA62 (16.11.2012)

#### NA62 experiment at CERN

Residual gas spectrum in decay tube  
Length > 100 m. Detectors inside vacuum



### Case 4

Alpha-Magnetic Spectrometer  
Tests after assembling at  $T < 2$  K

