



# Challenge: Remote goods in Nepal

CBI@MED 2016





KTM

# The water issue















GENUINE  
BREEDER



# Parlour

Thirring - 25/-

Cutting - 100/-

Cleansing - 200/-



# Energy issues





Electronic Schedule - 2016

Sunday: 7:00 AM — 2:00 PM  
5:00 PM — 11:00 PM

Monday: 9:00 AM — 5:00 PM  
8:00 PM — 11:59 PM

Tuesday: 8:00 AM — 4:00 PM  
7:00 PM — 11:59 PM

Wednesday: 5:00 AM — 11:00 AM  
2:00 PM — 9:00 PM

Thursday: 6:00 AM — 1:00 PM  
4:00 PM — 10:00 PM

Friday: 3:00 AM — 8:00 AM  
11:00 AM — 7:00 PM

Saturday: 4:00 AM — 10:00 AM  
1:00 PM — 8:00 PM















# The social mentality & giving back





Everyone's a hacker





















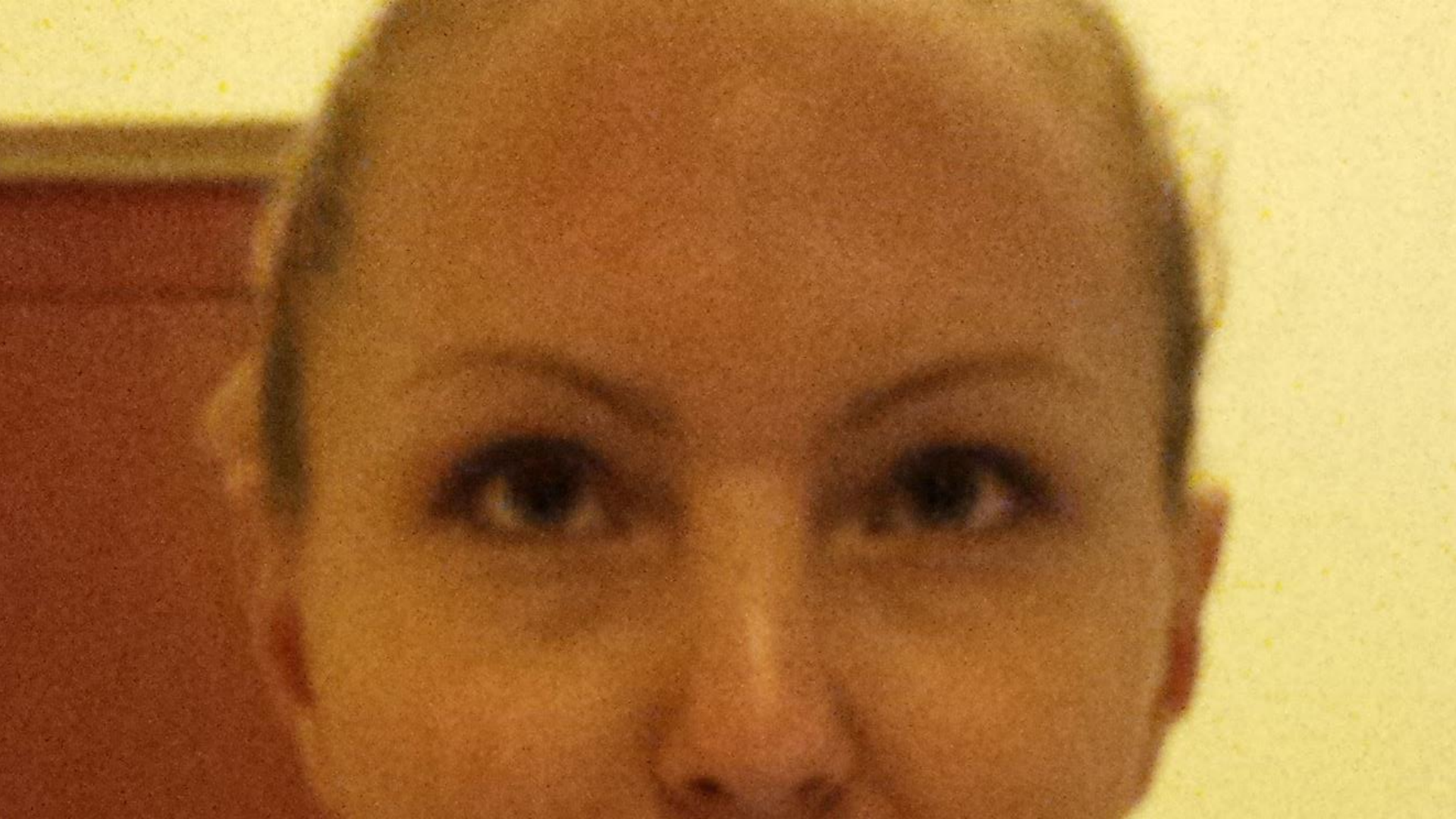








*Video from Bhaktapur*





monobrow







To the challenge part!

Mission:

Design a way to deliver cargo to remote villages in Nepal not accessible by road.







Lukla, most dangerous airport in the world







# Goods can be...

- medicine
- goats
- people (sick people or doctors)
- basic food items (rice, spices)
- gas
- water
- school equipment



Mission:

Design a way to deliver goods to remote villages in Nepal not accessible by road.