

Beam Wire Scanner for PSB

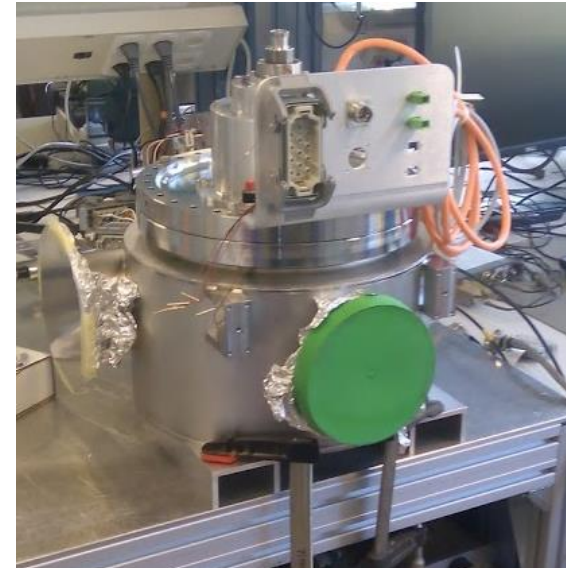
Update

19-Sep-2016

Dmitry Gudkov
BE-BI-ML

Contents

- Status of prototypes
- Optical disks
- Scintillator/Filter box/Photomultiplier



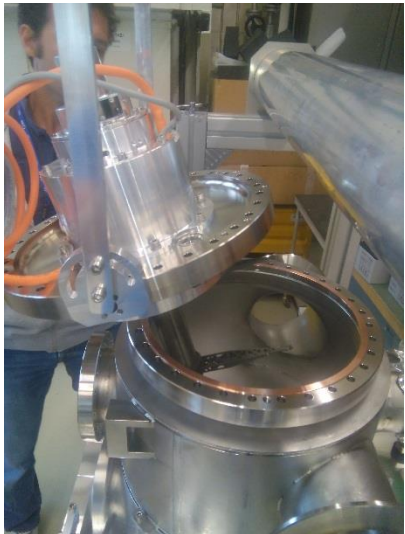
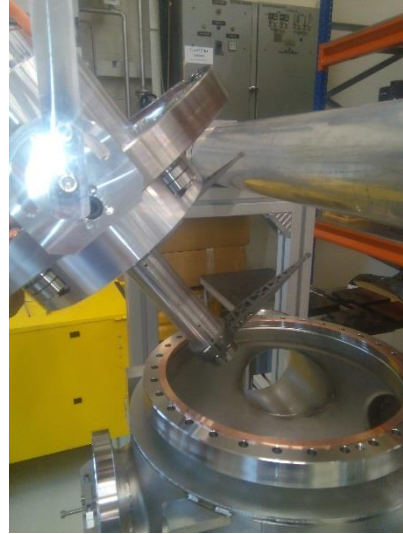
BWS prototype for PSB. Test program

	BWS in PSB	LAB prototype	Test bench (no tank)
Assembly	W37	W37	W37
Electromechanical test	W38	W38	W38
Impedance test		W39	
Installation test		W41	
Calibration test		W42	
Control system test			W39
Mechanical reliability test			W40..42
Optical system			W40..42
Disassembly	W39		
Cleaning	W40		
Assembly	W42		
Vacuum qualification	W43		
Fiducialiasation	W44		
Calibration	W45		
Installation	W50		

BWS prototype for PSB. Test program

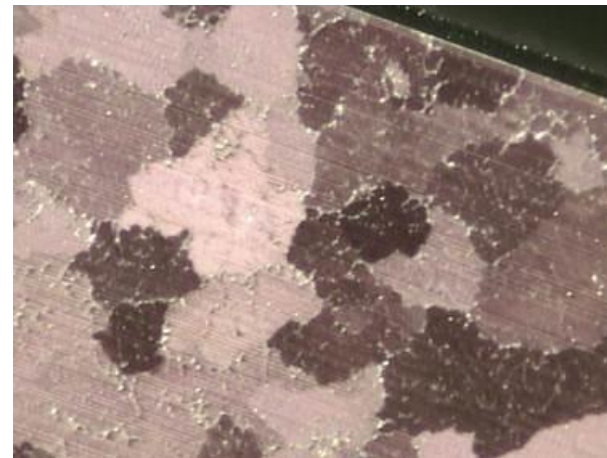
	BWS in PSB	LAB prototype	Test bench (no tank)
Assembly	W37 - done	W37 - done	W37 - done
Electromechanical test	W38 - done	W38 - done	W38 – under way
Impedance test		W39 – under way	
Installation test		W41 - done	
Calibration test		W42	
Control system test			W39... – under way
Mechanical reliability test			W40....
Optical system			W40....
Disassembly	W39 - done		
Cleaning	W40 - done		
Assembly	W40 - done		
Vacuum qualification	W41..43 - under way		
Fiducialiasation	W44		
Calibration	W45		
Installation	W50		

BWS prototype for PSB. Installation Test



Optical Disks Status CW 41

Mechanical polishing of optical face	1 extra disk, visit to the company for discussion (11.10)
Electrochemical polishing	25 samples (AW-2219) + 25 samples (AW-6082), study is under way
Electrochemical polishing	SS sample for tests with optical system is under preparation (CW41..CW42)
4 disks order (AW-6082)	P.O. sent to VDL, they will give us special sample so we can choose the desired surface finish (CW41).
Glass disk	Holder design done, in production, integrated with current design. Test with smaller glass disk (no chrome coating) is foreseen



Scintillator/Filter box/Photomultiplier

Status CW38	Status CW41
<ol style="list-style-type: none">1. We have no spare components in stock.2. No 2D drawings or 3D models are available in CDD/Smarteam.3. 3D model has to be remade (readiness 80%), working on design optimisation considering new commercial components available on market (filters, holders etc.).4. Drawings will be completed after 3D model (~20 new drawings). Drawings approval process?5. How many complete units to be produced?	<ol style="list-style-type: none">1. Detailed design is nearly completed (97.5%)2. Drawings are in CDD: PS_BWSA_0067...PS_BWSA_00923. Approval process: 1st control – William, 2nd control – Jose4. Filter wheel will be requested from Thorlabs (CERN – design)5. 10 units to be confirmed (2 with higher priority for EYETS '16-'17)

