

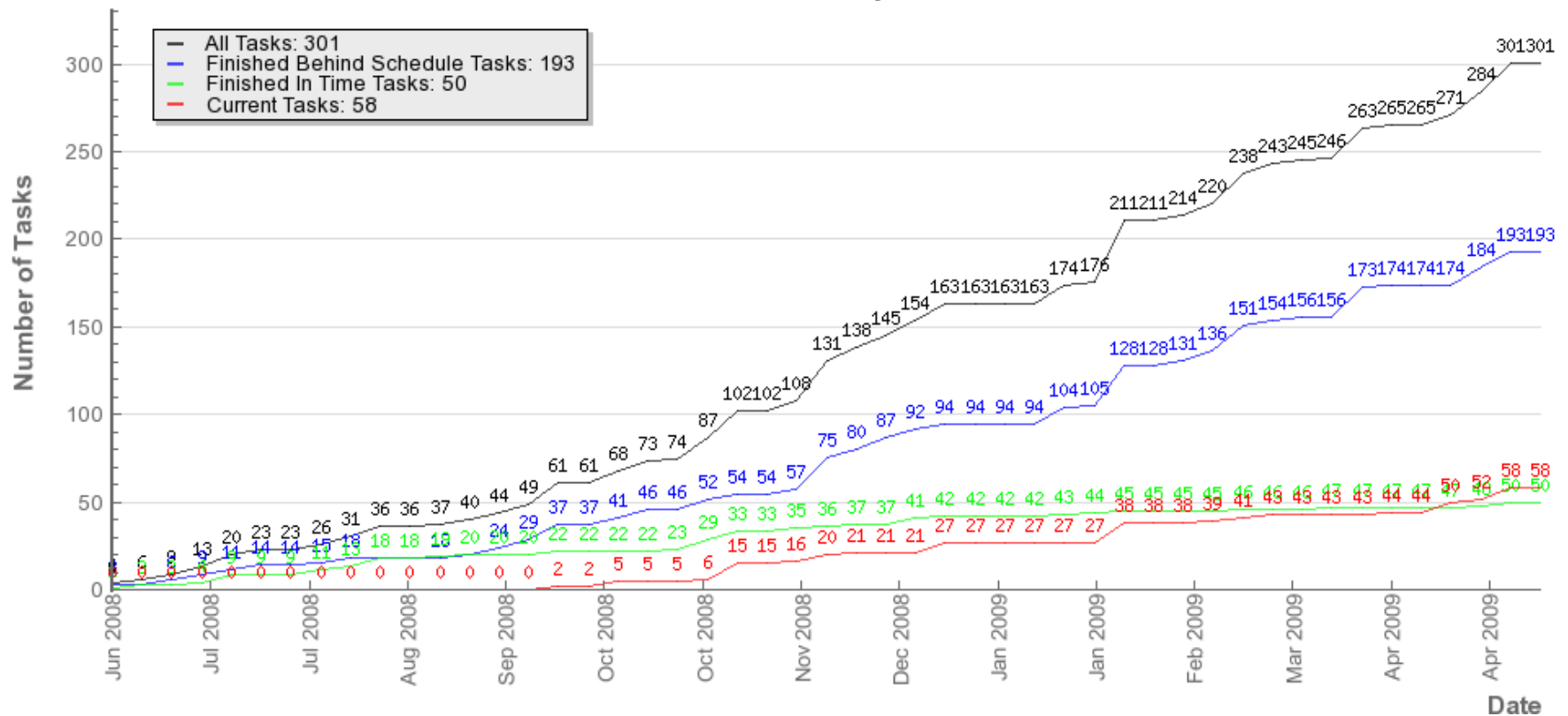
Task tracking: how can we improve it?

Diana.Bosio@cern.ch

- **A reminder on the Task tracker objectives**
- **Few graphs**
- **Some not so random thoughts**
- **Some questions to you**
- **Some suggestions**

- **Task tracker should represent all the activity in SA3**
 - Probably not 100% as one day tasks and attendance to conferences and meetings are not recorded, but these should not be the bulk of the work
- **Plan to use it to know where effort is not being used so that new work can be assigned.**

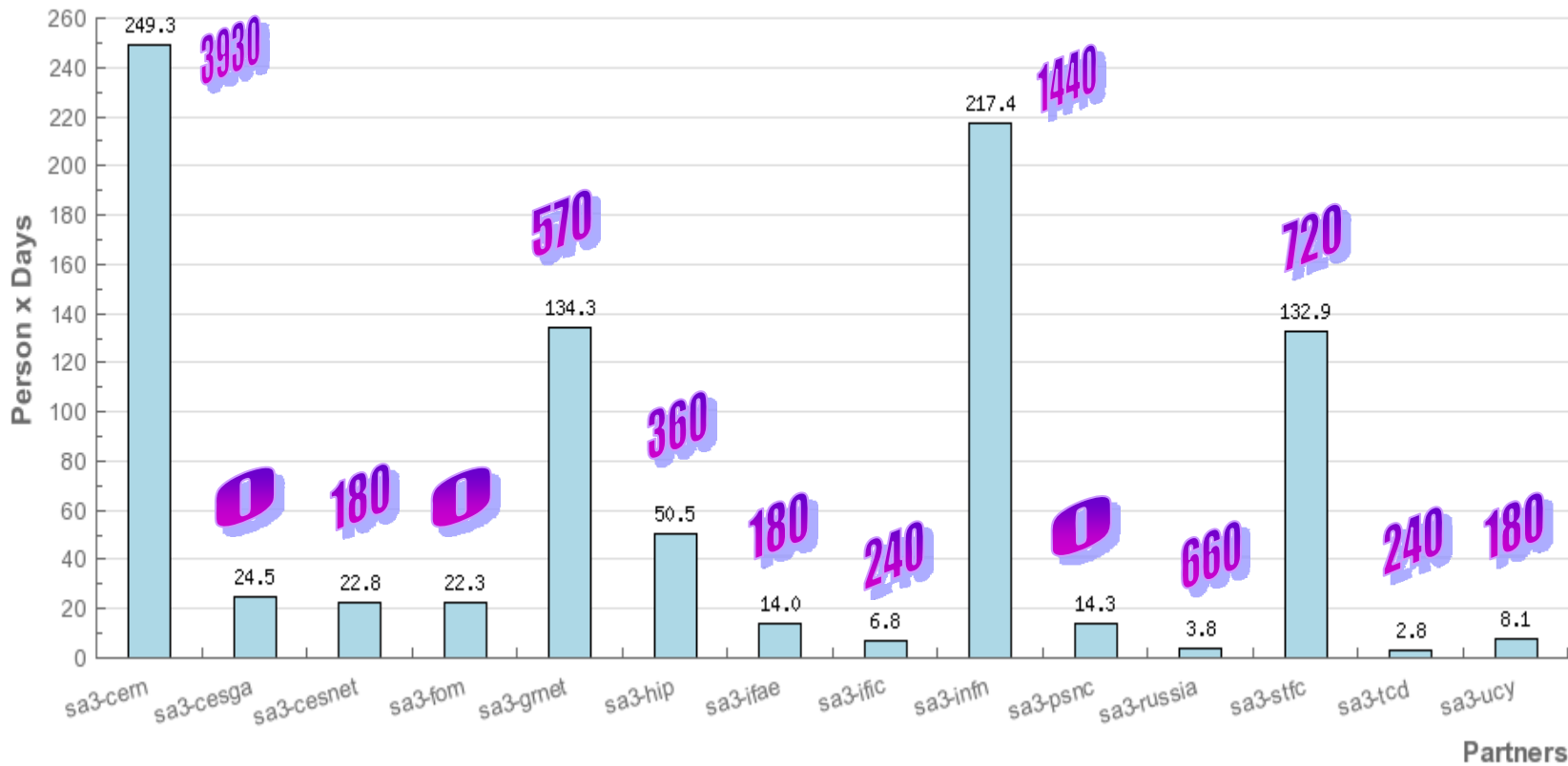
Number of Tasks per Time



- **The task tracker started to be really used in October**
- **The estimation of time is mostly too optimistic**
 - Most of the tasks are closed late
 - But this could also be an effect of the delay between task 'done' and 'closed'

- **Is the number of tasks enough to cover roughly what we do?**
 - What percentage of what we do is actually represented?
 - Of course this will never be 100%.

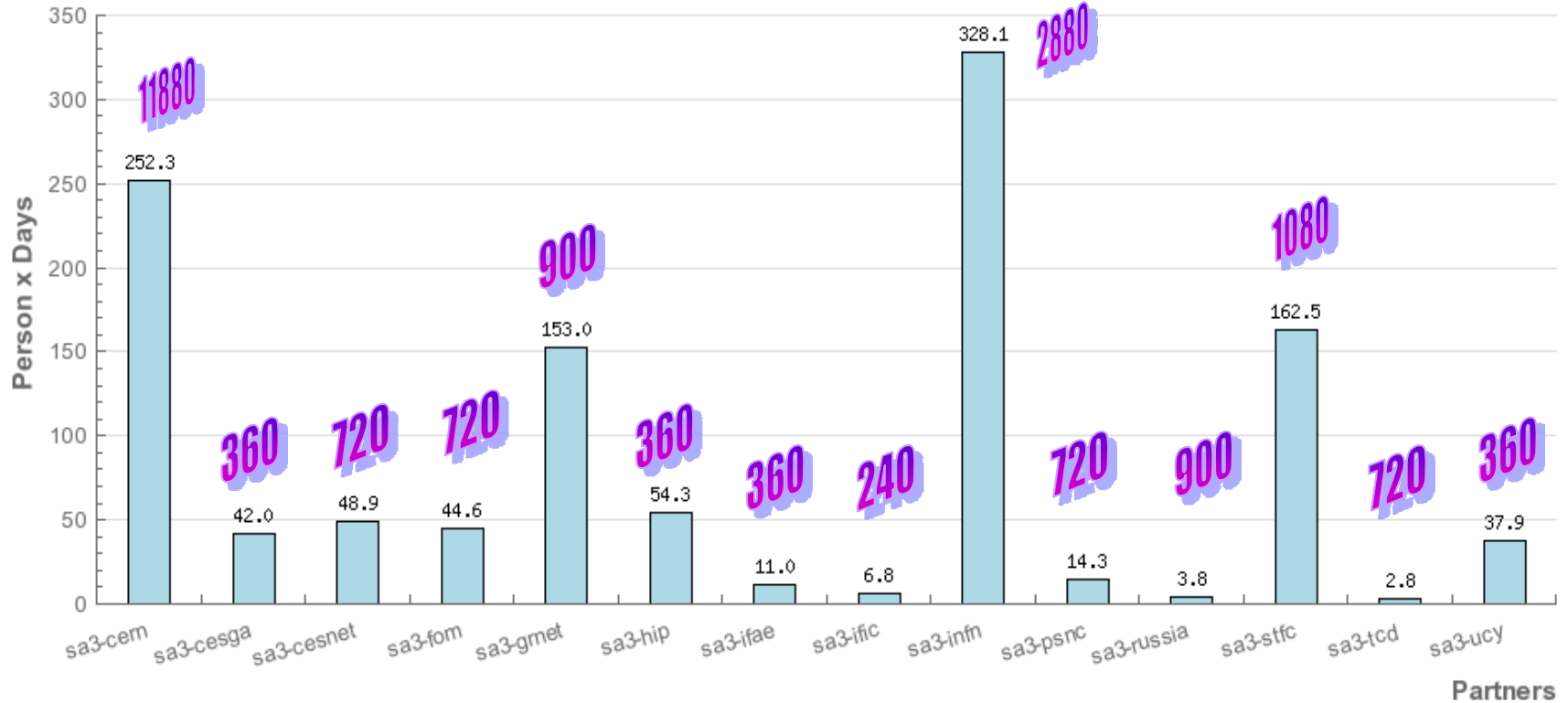
Planned Effort for Tasks in TSA3.2 Testing and certification



Partners

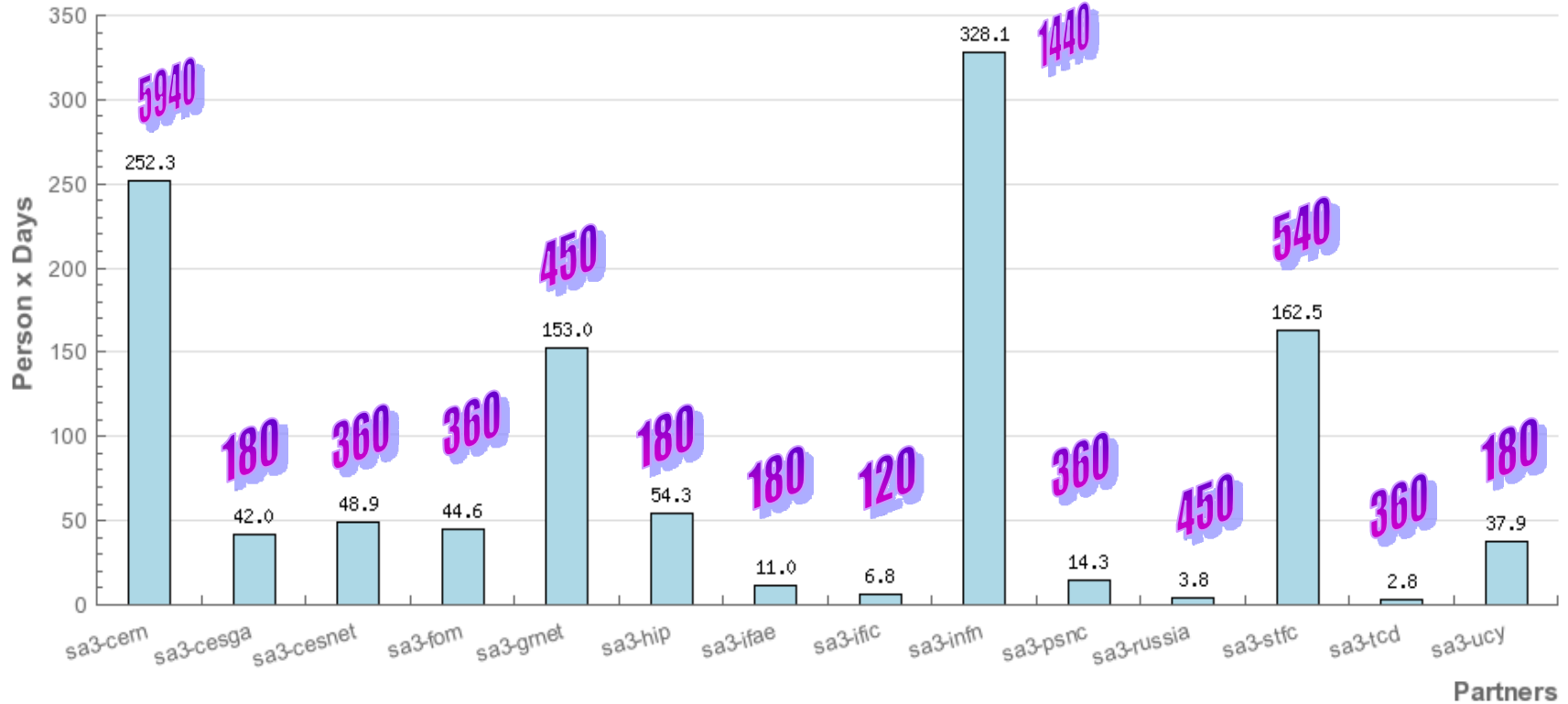
Something is wrong here...

Planned Effort for Tasks



Partners

Planned Effort for Tasks



Partners

- **Effort still recorded in days?**
 - I have changed all the tasks that had effort not zero at the time, but maybe some tasks still have effort in days.
 - It would still not explain the big shortfall
- **Effort not recorded?**
 - 45 tasks where the effort is 0.
 - 16 are closed. And not all are 'canceled' or 'duplicate'
 - 15 are open and due for before May 5th 2009.
- **Effort not recorded appropriately?**
 - Effort in PPT and Savannah can differ **enormously** (can go up to a factor 3 or more).
- **Still more tasks that should be recorded?**

- **I would like to see the savannah tracker to reflect what we do a bit more accurately without adding too much of an overhead on our daily work...**
 - Some more tasks?
 - Effort not forgotten?

Other ideas??

- **Any partner below their commitment will automatically attract work**
 - With fractional FTEs it gets complicated, but still feasible.
- **More tasks on**
 - Test plans
 - Regression tests
 - Test reports
- **Regular checking of the tracker effort**
 - We could do it every quarter, let's say for the quarterly report.
 - Checking with the workplan
 - *As done here.*
 - Cross-checking with PPT
 - *Some discrepancies are normal, but a task of 10 hours should not have a PPT equivalent of 100 hours...*