

# WG3 Medical Applications



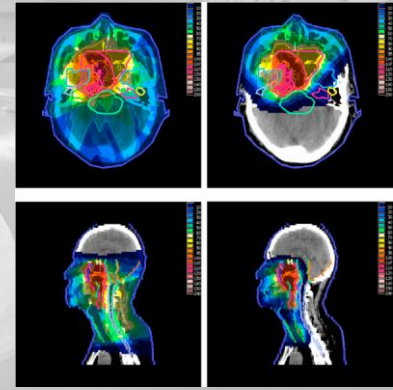
**Rita Ferreira / Giovanni Porcellana**  
Knowledge Transfer Medical Applications

**Julia Woithe**  
S'Cool LAB Manager

# Medical Applications @ CERN



## Accelerators for Cancer Treatment



## Detectors for Medical Imaging



## Computing in Medical Field



# Medical Applications and HST Program

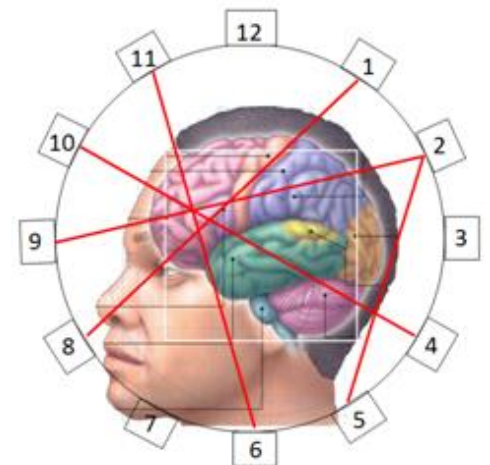
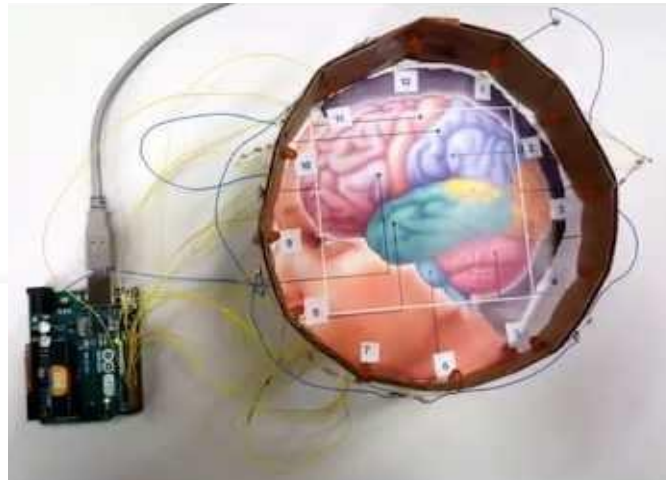
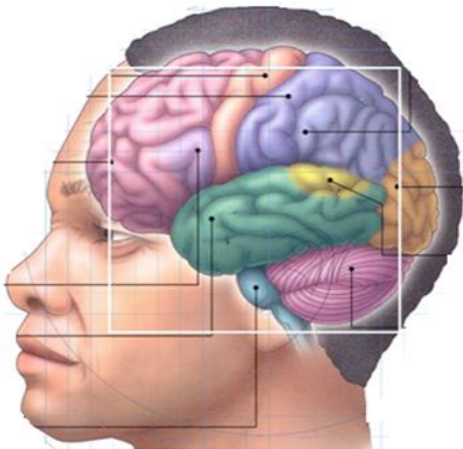


## WG in HST program in the last 2 years

- Networking
- Fun
- Brainstorming
  
- Fight misconceptions
- Create useful models



## HST 2016 – Sam has a PET Scan



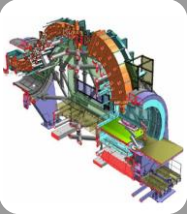


# Working Areas



## Imaging

- Pet Scan
- MRI
- ...



## Hadron therapy

- Bragg peak
- Gantries
- ...



## Computing

- Apps
- Big data
- ...



## Automation

- Robotics
- ...

**And MORE...**



# Working Areas

