

Cosmic Rays going Global

Nicolas, Marge, HP, Catarina,
Despina, Rasmus, Catia, Julia, Charles

Contacts with experiments

project name	contact person	data publicly available	analysis tools	interested in meeting	writeup	comment
HiSPARC	Bob van Eijk vaneijk@nikhef.nl	yes	yes	yes	yes	includes stations in UK and Denmark
CZELTA	Karel Smolek karel.smolek@utef.cvut.cz	site with passwd	C++ frame	yes	yes	
cosmic@web	Carolin Schwerdt carolin.schwerdt@desy.de	yes	yes	yes	like to create	
SkyView	Julian Rautenberg julian.rautenberg@uni-wuppertal.de	No (yes)	from Teilchenwelt	yes		German
QuarkNet Cosmic Ray Studies	Mark Adams adams@fnl.gov	yes	yes	yes	yes	
ROALTA	Vlad Popa vpopa@spacescience.ro			yes		not active
SEASA	Mark Pearce pearce@kth.se					not active
EEE - Science inside schools	Rosario Nania rosario.nania@centrofermi.it Marcello Abbrescia <Marcello.Abbrescia@ba.infn.it>	to participants	internal	yes	yes	
Shower of Knowledge	Georgy Shelkov chelkov@jinr.ru Alexey Zhemchugov	to participants	yes	yes	yes	
CROP	Dan Claes dclaes@unl.edu	to participants	create text files		http://crop.unl.edu	
Cosmix	Benoit Lott lott@cenbg.in2p3.fr	upon request	yes	yes	yes	
CREDO	Piotr Homola Piotr.Homola@ifj.edu.pl	yes	yes	yes	yes	
COSMOS à l'Ecole	Claire Bonnoit-Chevalier claire.bonnoit@obspm.fr	upon request	no	yes	yes	
CREATE	Prof. Thompson l.thompson@sheffield.ac.uk					
MAZE	Dr Wibig wibig@zpk.u.lodz.pl					
DUKS	Dr Fynbo fynbo@phys.au.dk					

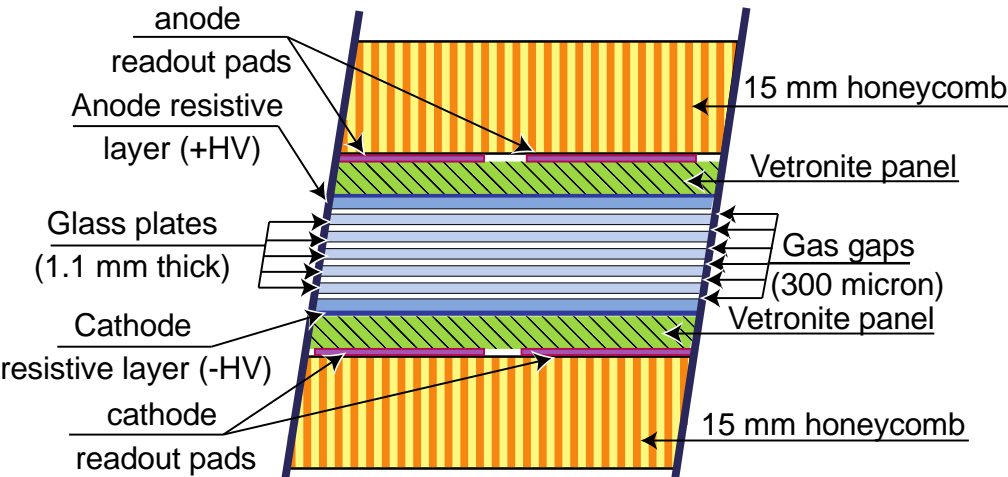
Next steps

- Organize a meeting between the different experiments (2 days)
 - You are not alone!
 - share experiences
 - Experimental fact-sheet
 - discuss the sharing of information and data
 - Common data format
 - Perform a student analysis on the data
 - Funding request..
- Likely week of feb 20th
- First step towards common data format/tools
- Masterclasses
- Possible locations: Amsterdam/Rome

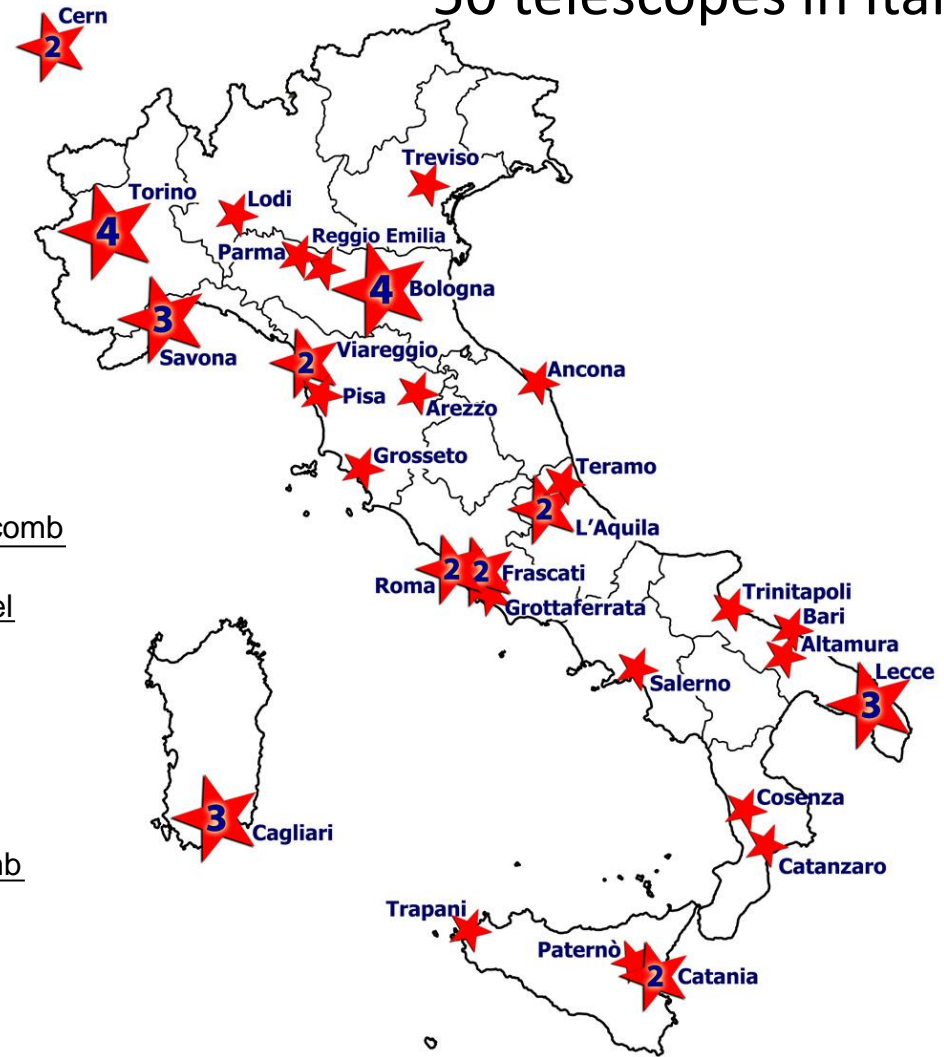
An extended array of muon telescopes EEE (Despina Hatzifotiadou)

50 telescopes in Italy

MRPC



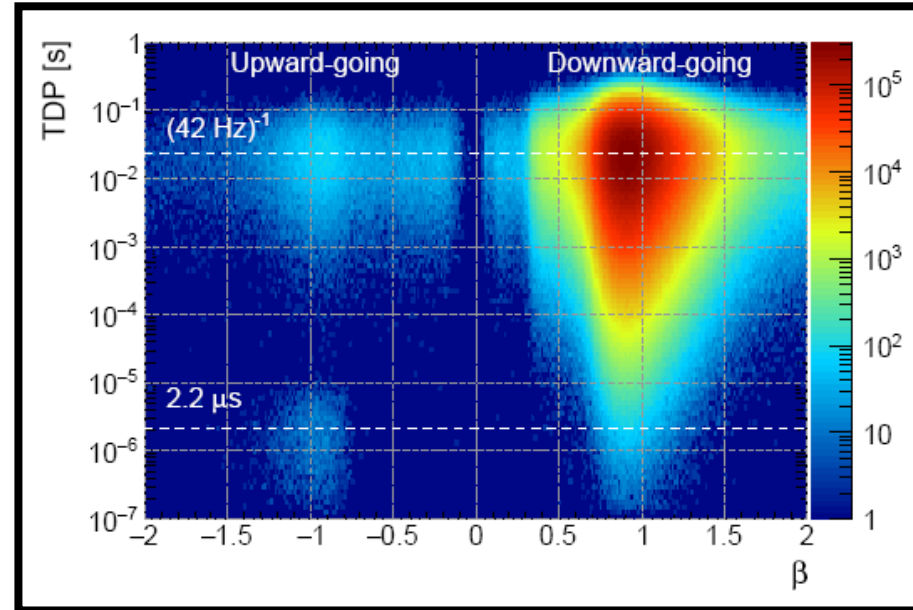
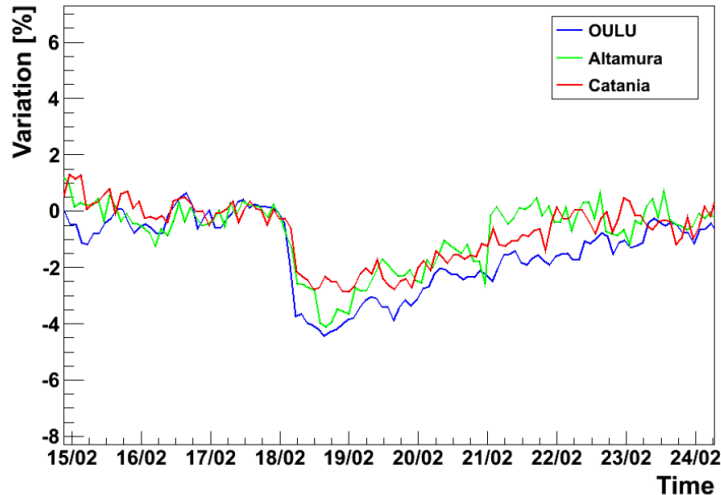
- 6 gas gaps of 300 microns each
- dimensions : 82 cm x 180 cm



- Requirements : reliable (long-term); easy to use; not expensive
- Design based on the MRPCs of the ALICE TOF (Time Of Flight)

Analysis topics (EEE)

Upward going muons!
(muon decay)



Forbush decrease