

EYETS planning

A.Tauro



EYETS duration

Start →

December 2016	
thu	1
fri	2
sat	3
sun	4
mon	5
tue	6
wed	7
thu	8
fri	9
sat	10
sun	11
mon	12
tue	13
wed	14
thu	15
fri	16
sat	17
sun	18
mon	19
tue	20
wed	21
thu	22
fri	23
sat	24 Noël
sun	25
mon	26
tue	27
wed	28
thu	29
fri	30
sat	31

January 2017	
sun	1 Jour de l'An
mon	2
tue	3
wed	4
thu	5
fri	6
sat	7
sun	8
mon	9
tue	10
wed	11
thu	12
fri	13
sat	14
sun	15
mon	16
tue	17
wed	18
thu	19
fri	20
sat	21
sun	22
mon	23
tue	24
wed	25
thu	26
fri	27
sat	28
sun	29
mon	30
tue	31

February	
wed	1
thu	2
fri	3
sat	4
sun	5
mon	6
tue	7
wed	8
thu	9
fri	10
sat	11
sun	12
mon	13
tue	14
wed	15
thu	16
fri	17
sat	18
sun	19
mon	20
tue	21
wed	22
thu	23
fri	24
sat	25
sun	26
mon	27
tue	28

March	
wed	1
thu	2
fri	3
sat	4
sun	5
mon	6
tue	7
wed	8
thu	9
fri	10
sat	11
sun	12
mon	13
tue	14
wed	15
thu	16
fri	17
sat	18
sun	19
mon	20
tue	21
wed	22
thu	23
fri	24
sat	25
sun	26
mon	27
tue	28
wed	29
thu	30
fri	31

April	
sat	1
sun	2
mon	3
tue	4
wed	5
thu	6
fri	7
sat	8
sun	9
mon	10
tue	11
wed	12
thu	13
sat	14 Vendredi Saint
sun	15
mon	16
tue	17 Lundi de Pâques
wed	18
thu	19
fri	20
sat	21
sun	22
mon	23
tue	24
wed	25
thu	26
fri	27
sat	28
sun	29
mon	30

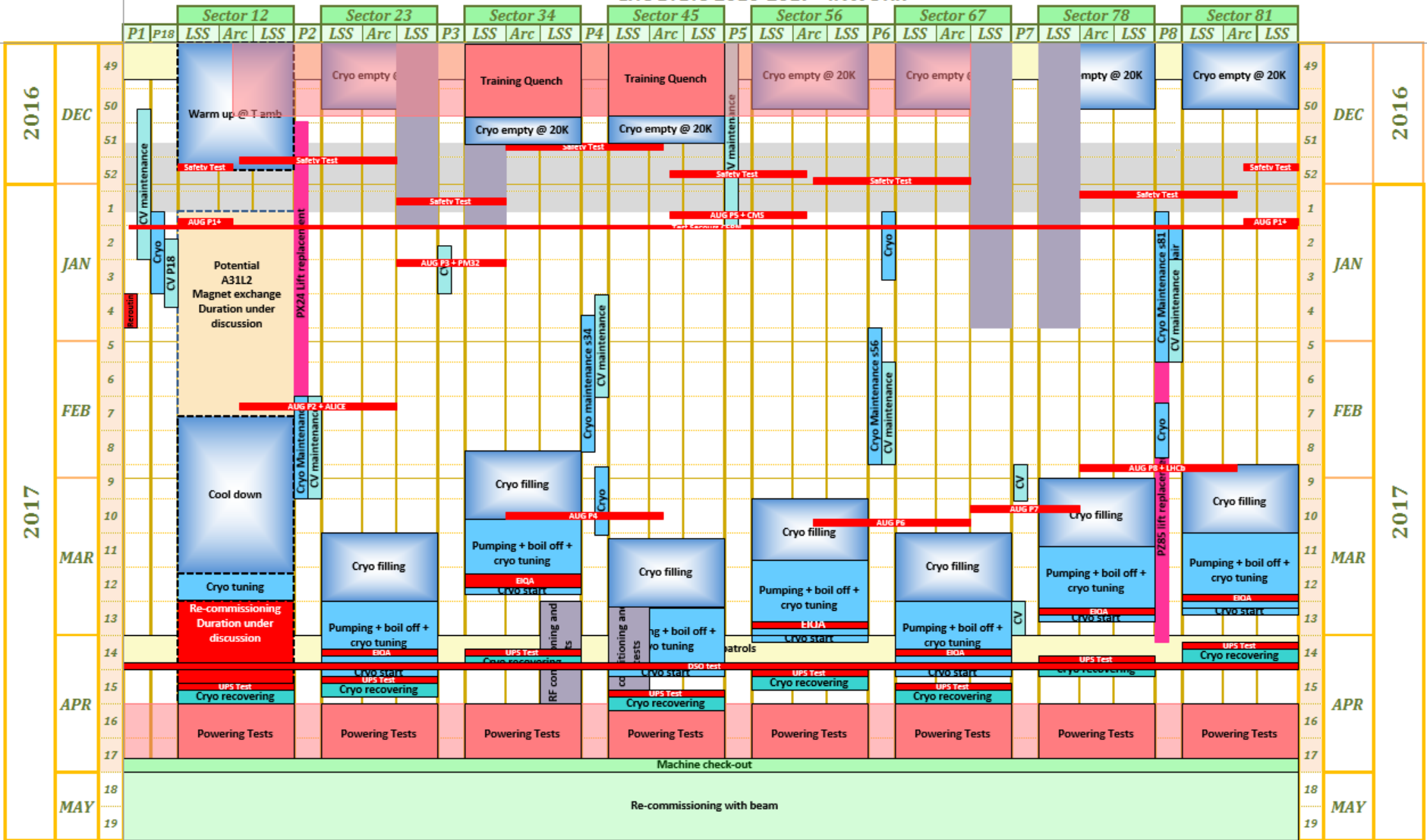
From 5 Dec to 30 Apr
21 weeks beam to beam
(w49 to w17)

← End



EYETS 2016/17 – IN WORK SCHEDULE

LHC EYETS 2016-2017 - INWORK



Main activities

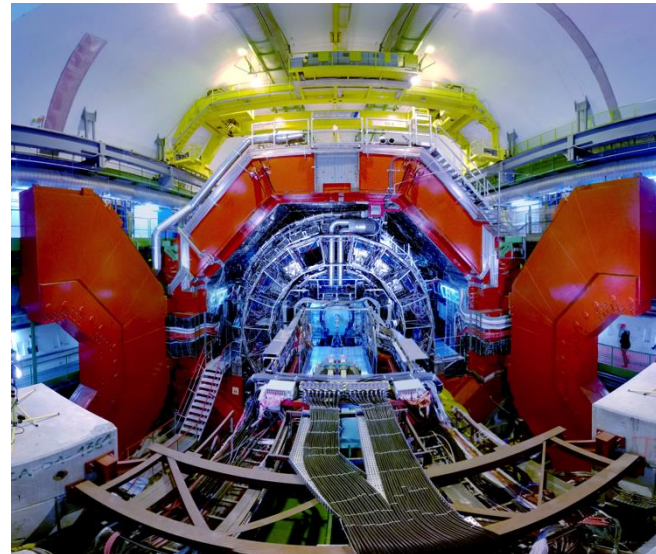
- Replacement cavern lift
- Install cable trays (EN-EA-CT) and LS2 fiber prototypes (EN-EL-CF)
- **Open L3 doors**
- **Detectors:**
 - Replace TOF TDC boards, displace 12 modules
 - Repair broken TRD optical connections
 - Reprogramming firmware of PHOS trigger units
 - Replace FECs on EMCAL and DCAL, shift SRUs
 - Possibly switch TPC gas to Ne

Opening/closing L3 doors

- Usual access restrictions during opening/closing

Opening

December 2016	
thu	1
fri	2
sat	3
sun	4
mon	5
tue	6
wed	7
thu	8
fri	9
sat	10
sun	11
mon	12
tue	13
wed	14
thu	15
fri	16
sat	17
sun	18
mon	19
tue	20
wed	21
thu	22
fri	23
sat	24 Noël
sun	25
mon	26
tue	27
wed	28
thu	29
fri	30
sat	31



Closing

April	
sat	1
sun	2
mon	3
tue	4
wed	5
thu	6
fri	7
sat	8
sun	9
mon	10
tue	11
wed	12
thu	13
fri	14 Vendredi saint
sat	15
sun	16
mon	17 Lundi de Pâques
tue	18
wed	19
thu	20
fri	21
sat	22
sun	23
mon	24
tue	25
wed	26
thu	27
fri	28
sat	29
sun	30

Maintenance UX25 crane: 4 to 6 Jan

PX24 lift replacement

December 2016	
thu	1
fri	2
sat	3
sun	4
mon	5
tue	6
wed	7
thu	8
fri	9
sat	10
sun	11
mon	12
tue	13
wed	14
thu	15
fri	16
sat	17
sun	18
mon	19
tue	20
wed	21
thu	22
fri	23
sat	24 Noël
sun	25
mon	26
tue	27
wed	28
thu	29
fri	30
sat	31

January 2017	
sun	1 Jour de l'An
mon	2
tue	3
wed	4
thu	5
fri	6
sat	7
sun	8
mon	9
tue	10
wed	11
thu	12
fri	13
sat	14
sun	15
mon	16
tue	17
wed	18
thu	19
fri	20
sat	21
sun	22
mon	23
tue	24
wed	25
thu	26
fri	27
sat	28
sun	29
mon	30
tue	31

February	
wed	1
thu	2
fri	3
sat	4
sun	5
mon	6
tue	7
wed	8
thu	9
fri	10
sat	11
sun	12
mon	13
tue	14
wed	15
thu	16
fri	17
sat	18
sun	19
mon	20
tue	21
wed	22
thu	23
fri	24
sat	25
sun	26
mon	27
tue	28

- 10 weeks, from 19 Dec to 24 Feb
- ALICE personnel via PM25 (transparent)
- From 19 Dec to 4 Jan: S12 warm-up between 80-300K (risk of helium spill) → access only for those with rescue mask training
- S12 cool-down (300-80K) w8-9-10



UX25 floor painting

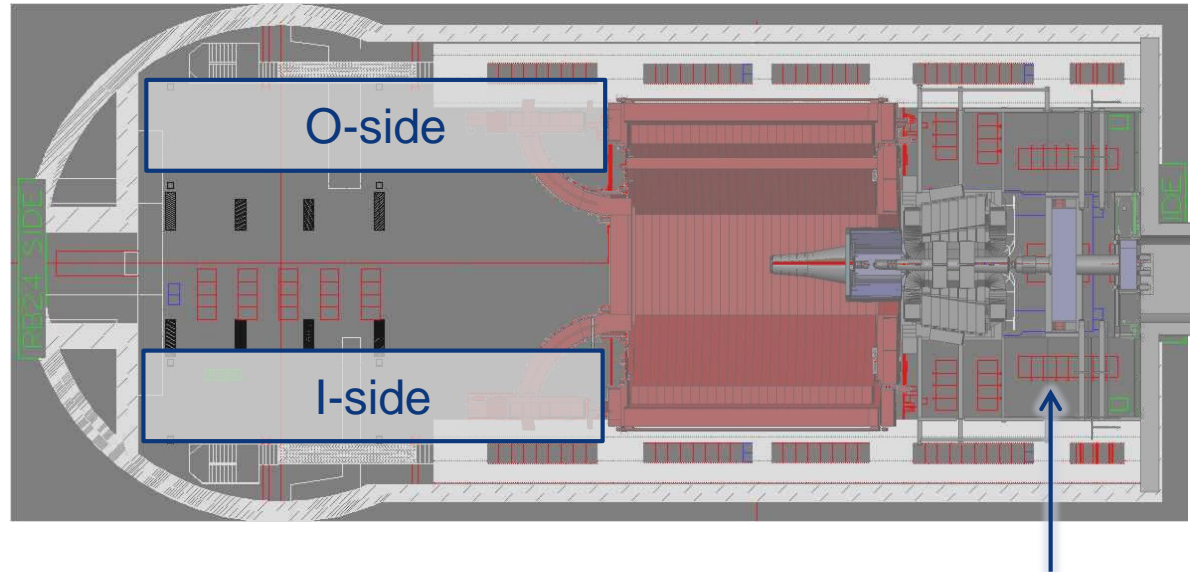
- Resin
- Access via C/4 during I-side painting

January 2017		
sun	1	Jour de l'An
mon	2	
tue	3	
wed	4	
thu	5	
fri	6	
sat	7	
sun	8	
mon	9	
tue	10	
wed	11	
thu	12	
fri	13	
sat	14	
sun	15	
mon	16	
tue	17	
wed	18	
thu	19	
fri	20	
sat	21	
sun	22	
mon	23	
tue	24	
wed	25	
thu	26	
fri	27	
sat	28	
sun	29	
mon	30	
tue	31	

February		
wed	1	
thu	2	
fri	3	
sat	4	
sun	5	
mon	6	
tue	7	
wed	8	
thu	9	
fri	10	
sat	11	
sun	12	
mon	13	
tue	14	
wed	15	
thu	16	
fri	17	
sat	18	
sun	19	
mon	20	
tue	21	
wed	22	
thu	23	
fri	24	
sat	25	
sun	26	
mon	27	
tue	28	

O-side

I-side



Cavern entrance

- **Purpose**
 - Reduce the acoustic noise by exchanging the coils of the Thyristor Controlled Reactance (TCR) of LHC Static Var Compensator in Point 2 by new special low-noise coils
 - Requested by CERN Top Management



LHC POINT2



TCR Coils

- **Schedule proposed**

- Switch-off: 5.12.2016 (date to be checked concerning Alice and TI2)
- W49-W50 2016 : Dismantling of the coils
- W3-W4 2017 : Installation of the new coils
- W5-W6 2017 : Tests and commissioning (adaptation of the control system, first energization and powering tests)
- W7 2017: Acoustic noise measurements (one night)
- Switch-on: probably in W7, and latest before 28 Febr. 2017

- **Safety**

- Delimited worksite area without any coactivity (VIC already done)

- **Consequences**

- AC network quality deviation during this period (no more reactive power and harmonics compensation)
- Impacted systems: No powering test possible for ALICE experiment and TI2

Gas system status during CERN closure (w51-52-1)

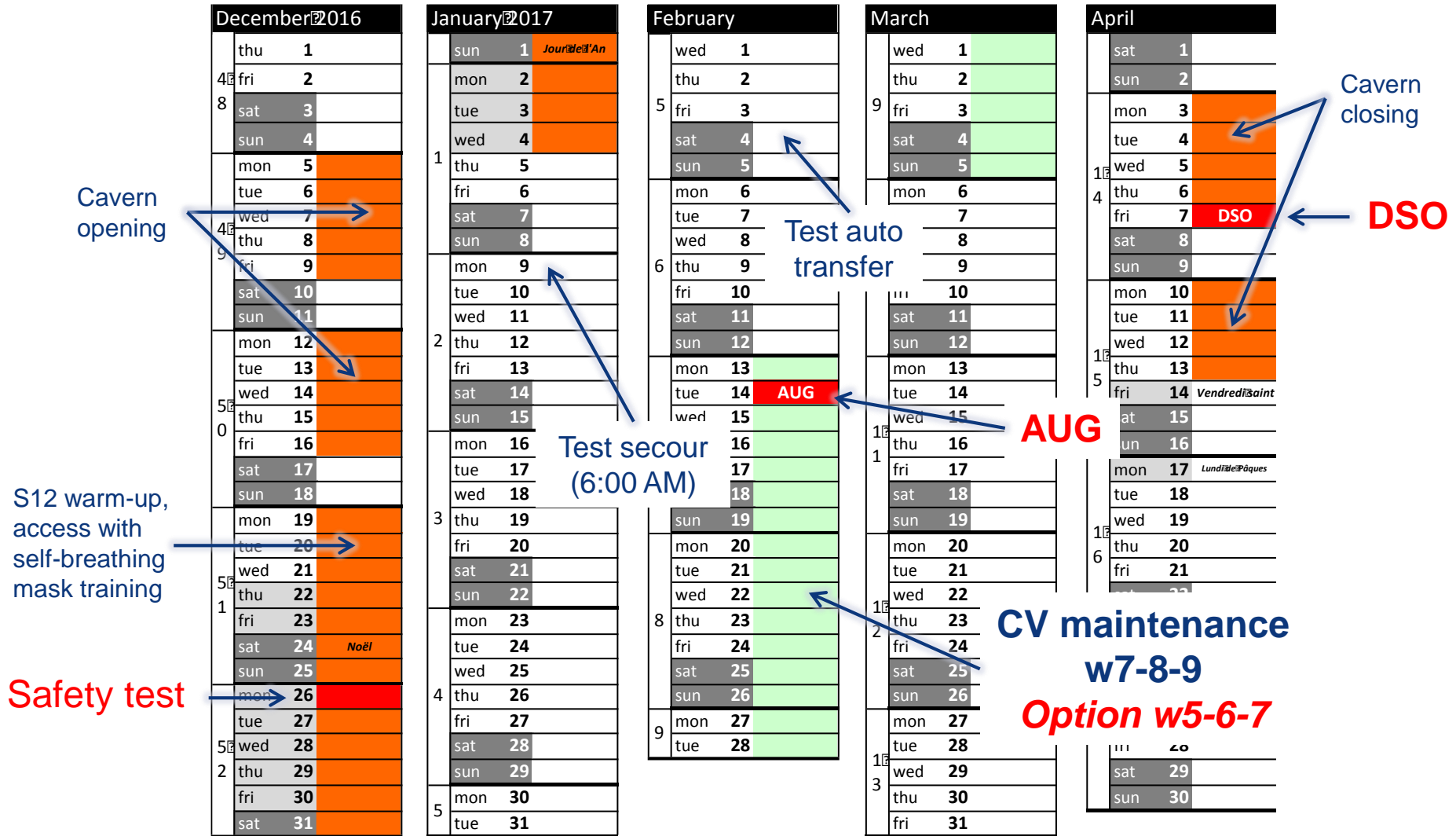


System	Status	Run supply	Backup	Comment
MCH 61 ST1	ON	Ar-CO2	CO2	
MCH 61 ST2				
MCH 62 ST3-4-5				
MTR	OFF	C2H2F4-iC4H10-SF6	Outlet chambers to atmp.	Stop iC4H10 on Dec 5th
PMD	OFF	Ar-CO2	CO2	
CPV	OFF	Ar-CO2	N2	
HMPID	OFF	CH4	Flushing by Argon	Stop CH4 on Dec 5th
HMPID envelope	ON	N2 manual supply		
PHOS	ON	N2 manual supply		
TOF	ON	C2H2F4-SF6	C2H2F4	
TRD	ON	Xe-CO2	N2	
TPC	ON	Ar-CO2	Ar-CO2	
TPC envelope	ON	CO2 Bronkhorst supply		

Gas system maintenance in January 2017 → detailed schedule to follow
Please confirm this table as soon as possible!

CV and EL maintenance

Red = no access, Orange = access restrictions



Other activities

- Ethernet redundancy
- TE-EPC: replace thyristors L3 power converter (tbc)
- Put SLIMOS+DCS console on DCS-UPS after power cut of 18.9
- EN-CV: install heat exchanger ITS pipe
- EP-T-FS: upgrades to the Gas system WinccOA. 1 day in weeks 5-6
- HSE-RP-IL: annual source tests of all RAMSES on Jan 11th
- Weld valve on N2 pipe (SG2)
- BE-ICS-AC: maintenance PX24 access door. 26 and 27 Jan
- EN-ACE-SU: measure the RB24 beampipe flanges (at least F0-F1). 2 to 5 days

Private underground visits

- From 5 Dec to 18 Dec (2 weeks)
 - **After working hours** (17:30 onwards)
- From 19 Dec to 24 Feb (10 weeks)
 - **NO visits at all <<< under discussion >>>**
- From 25 Feb to 2 April (5 weeks)
 - **Private visits allowed**
- From 3 Apr to 13 April (2 weeks)
 - **After working hours** (17:30 onwards)
- From 14 Apr to 27 April (2 weeks)
 - **Private visits allowed**