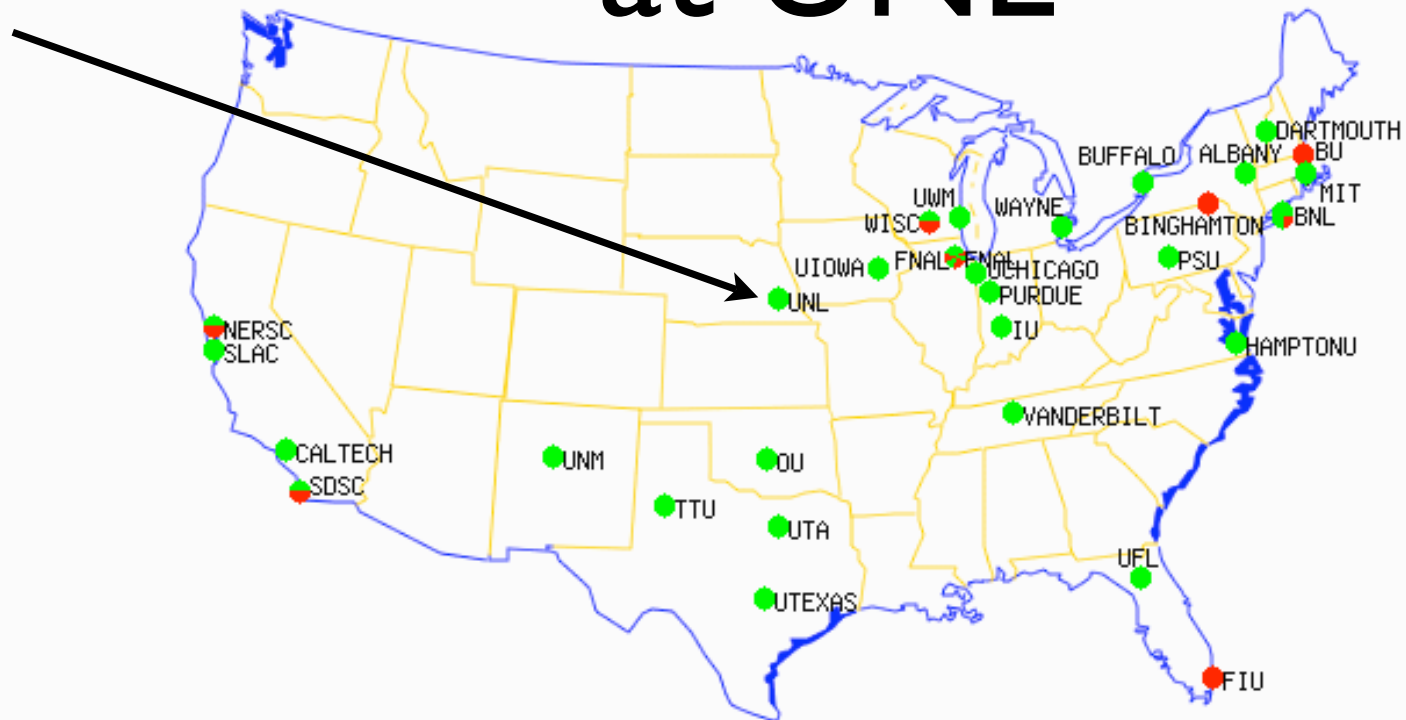


# US CMS Tier-2 Site at UNL

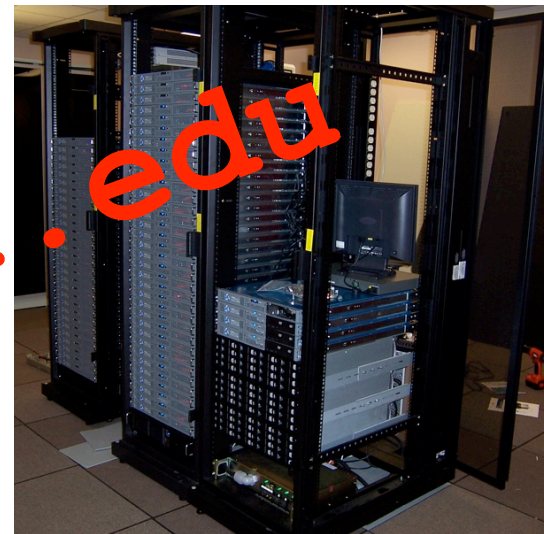


Dr. David Swanson, Director, Research Computing Facility



# UNL T2 Facility

- Current Hardware: 64 2-way dual-core Opteron nodes (~315 kSI2k), 40 TB disk
- Plan 80 TB, ~500 kSI2k by fall 2006
- 200 TB, ~1000 kSI2k by 2007



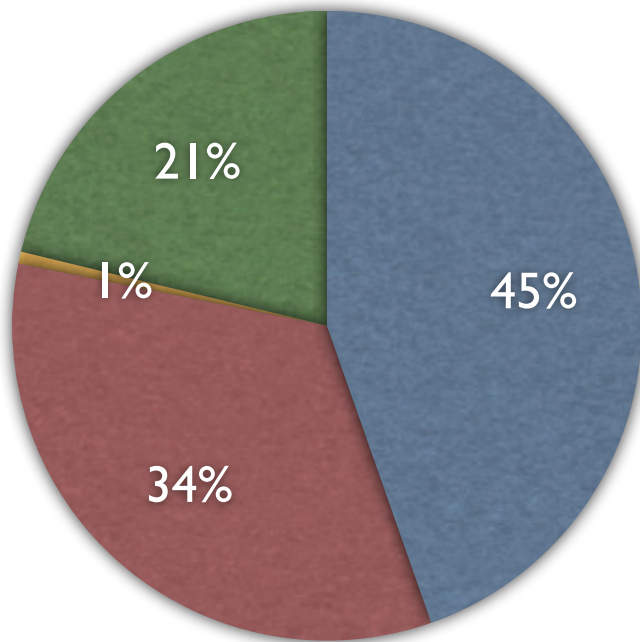


# UNL Tier-2 Personnel

- Brian Bockelman (other RCF personnel) initial install, operations and maintenance, OSG CE, SE
  - moving to OSG development testing (ws GRAM)
- 2 FTE now on board (Carl Lundstedt, Makoto Furukawa)
  - assuming operation, maintenance responsibility
  - Appears sufficient
- HEP Faculty (*Ken Bloom, Aaron Dominguez, Greg Snow, Dan Claes*)



# Usage @red.unl.edu



## Usage (cpu days)

ATLAS (3899)  
CMS (2931)  
UNL (1854)  
GADU (54)