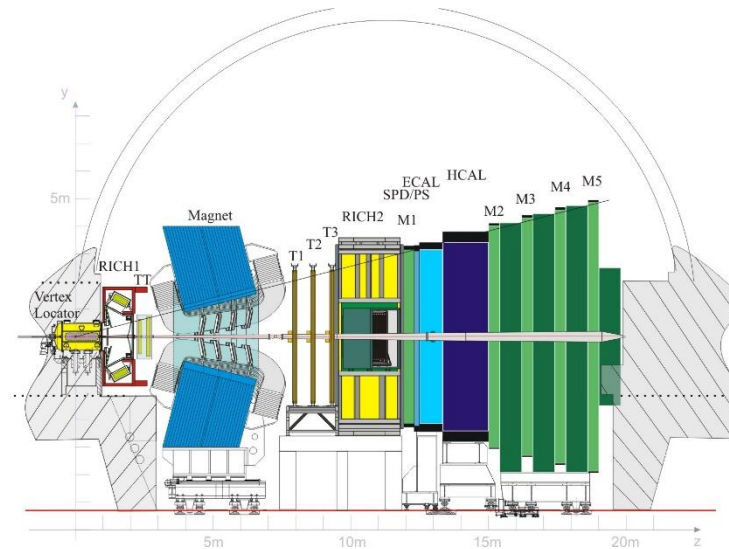


LHCb & EYETS

2016-2017



EYETS Schedule

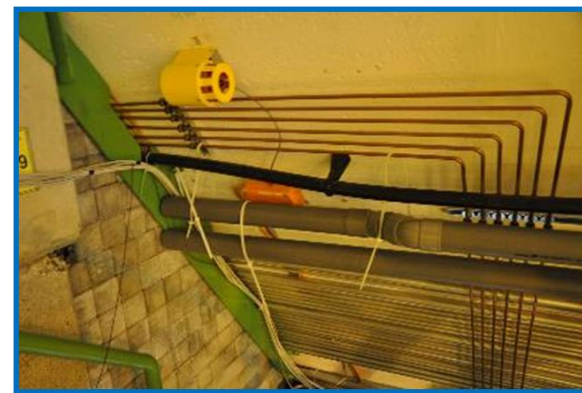
Oct				Nov				Dec				End of LHC run [06:00]			
Wk	40	41	42	43	44	45	46	47	48	49	50	51	52		
Mo	3	10	17	24	31	7	14	21	28	5	12	19	26		
Tu	MD 4					Ion setup				Extended year end technical stop					
We					TS3										
Th							Ion run (p-Pb)					Lab closed			
Fr				MD 5											
Sa															
Su									Pb MD			Xmas	New Year		

Jan				Feb				Mar					Controls interventions			
Wk	1	2	3	4	5	6	7	8	9	10	11	12	13			
Mo	2	9	16	23	30	6	13	20	27	4	11	18	25			
Tu																
We																
Th																
Fr																
Sa																
Su																

Apr				May				June						Scrubbing	
Wk	14	15	16	17	18	19	20	21	22	23	24	25	26		
Mo	3	10	Easter Mon	17	1st May	8	15	22	29	Whit	5	12	19		
Tu															
We															
Th															
Fr		G. Friday													
Sa															
Su															

EYETS: Detector work

- No major work – detectors are in good shape (at least today).
- “**Standard**” maintenance of all detectors and service, typically to fix few channel or replace broken electronics
 - Requires to open Some detectors (M1, CALO, ...)
 - Venting of the Beam Pipe
 - Survey
 - ...
- “**Exceptional**” work
 - CO2 transfer lines installation (upgrade)
 - Repair Silicon Tracker broken bonds
 - Herschel L0/Scintillators replacement
 - RICH1 HPD exchange



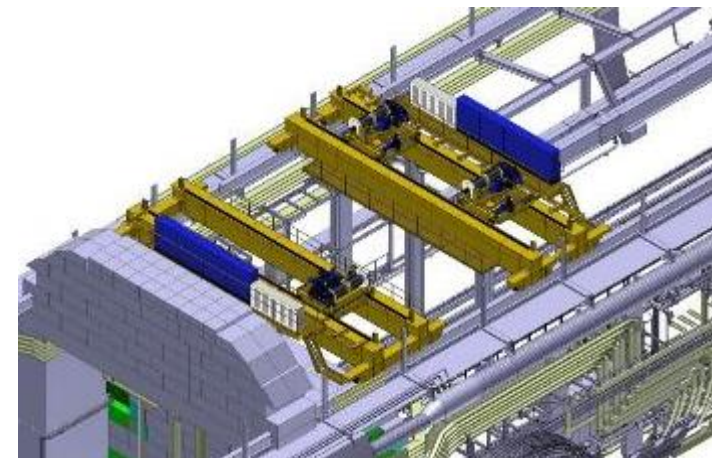
EYETS: Main tasks and constraints

- Replacement AS713 (PZ85 lift) by EN-HE
 - **Schedule: 06/02/17 -14/04/17**
 - **Access via PM85 shaft**
 - **Access condition EDMS1682496**
- Revamping PR720&PR721 (UX85 80t overhead cranes) by EN-HE
 - **Schedule: Jan 30 – 14/04/17**
 - **Limited access to detector**



Very limited Time window for detector work :

From Dec 5 2016 to Jan 22 2017



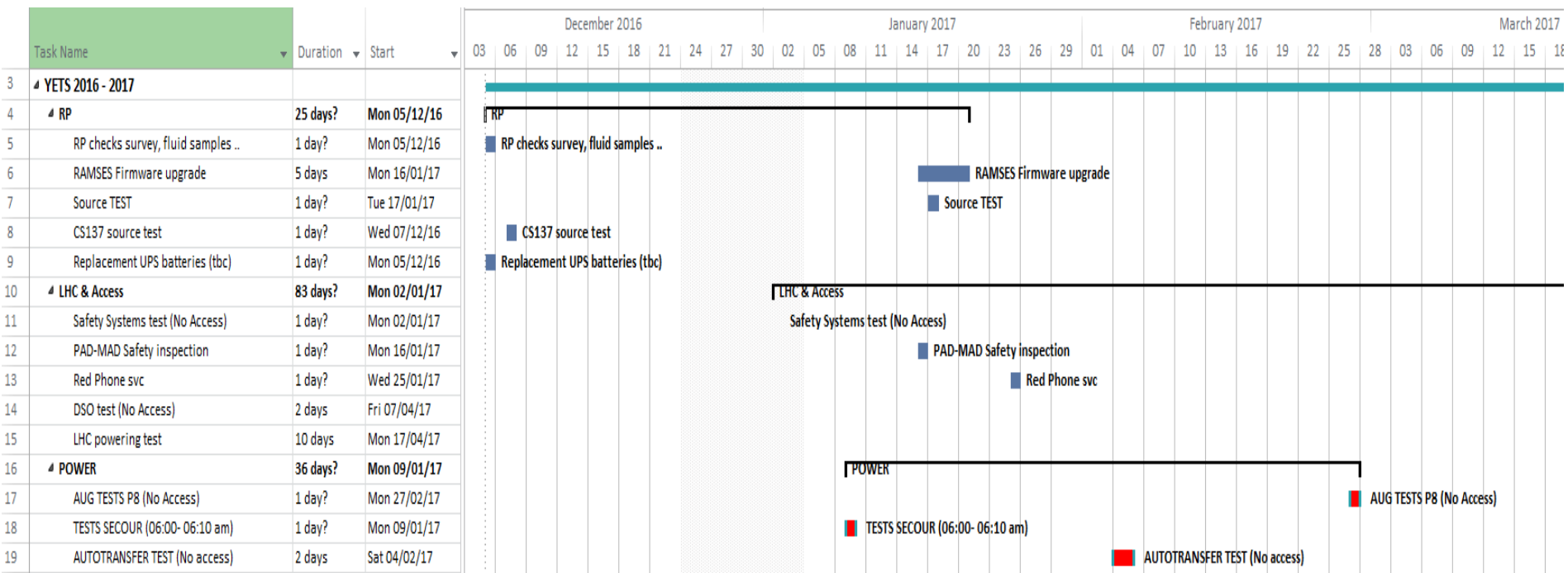
Important dates

- EYETS from 5th of December 2016 @6am until April 30th
- LHC back to OP on 14th April (powering tests)
(No access to CERN, incl. surfaces, offices ...)
- Experiments closed on 30th April

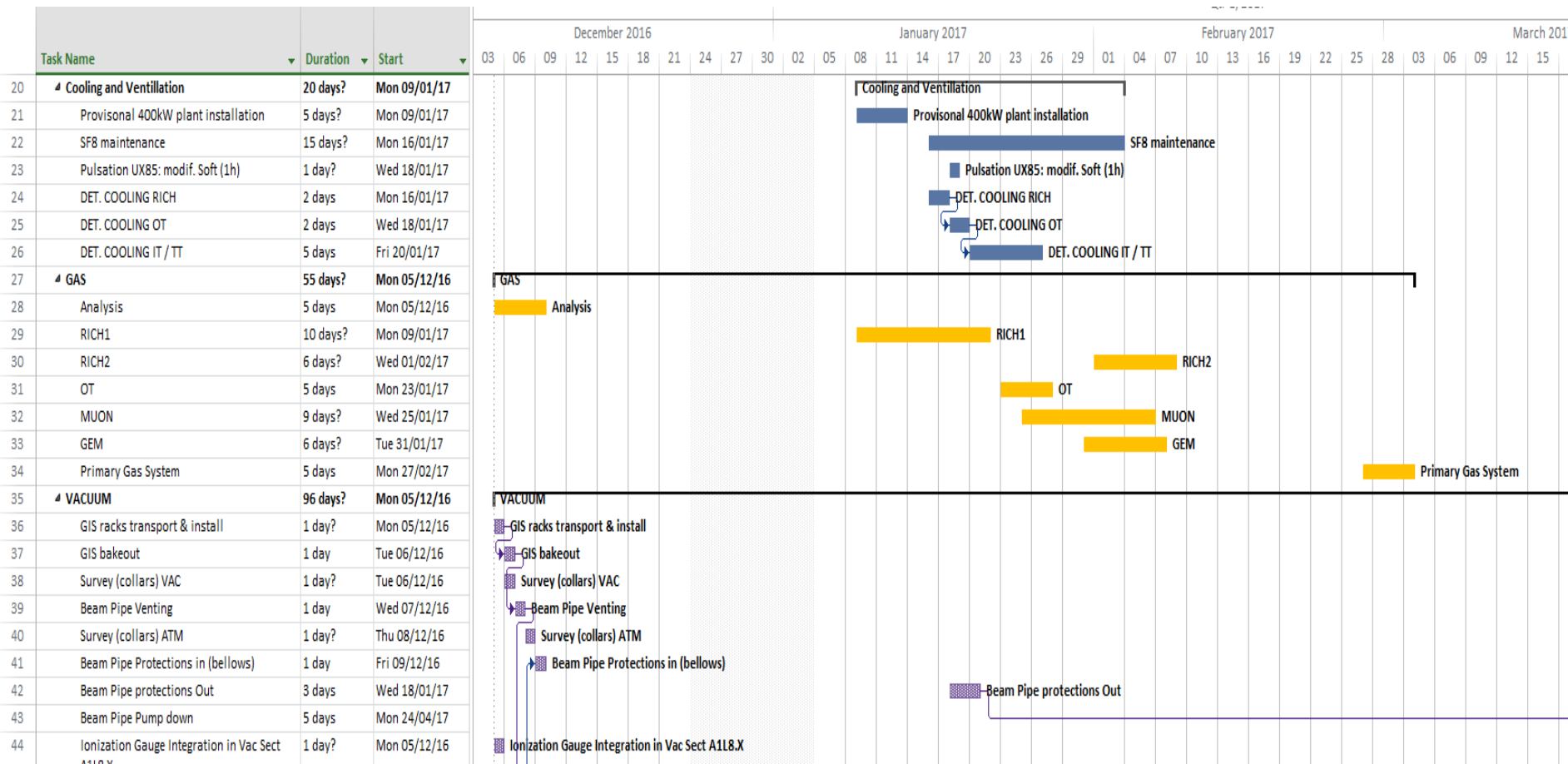
NO ACCESS during ➔

- **CERN closure: from 22/12/16 to 4/1/17 included**
- **Safety System tests: Jan 2nd 2017**
- **AUG test P8: Feb 27th (incl. surface)**
- **Auto Transfer test Feb. 4-5th 2017**
- **DSO test April 7-8th (!Warning Patrol w14)**
- **Test 'Secouru' Jan 9th (6:00 to 6:10 am)**

LHCb planning

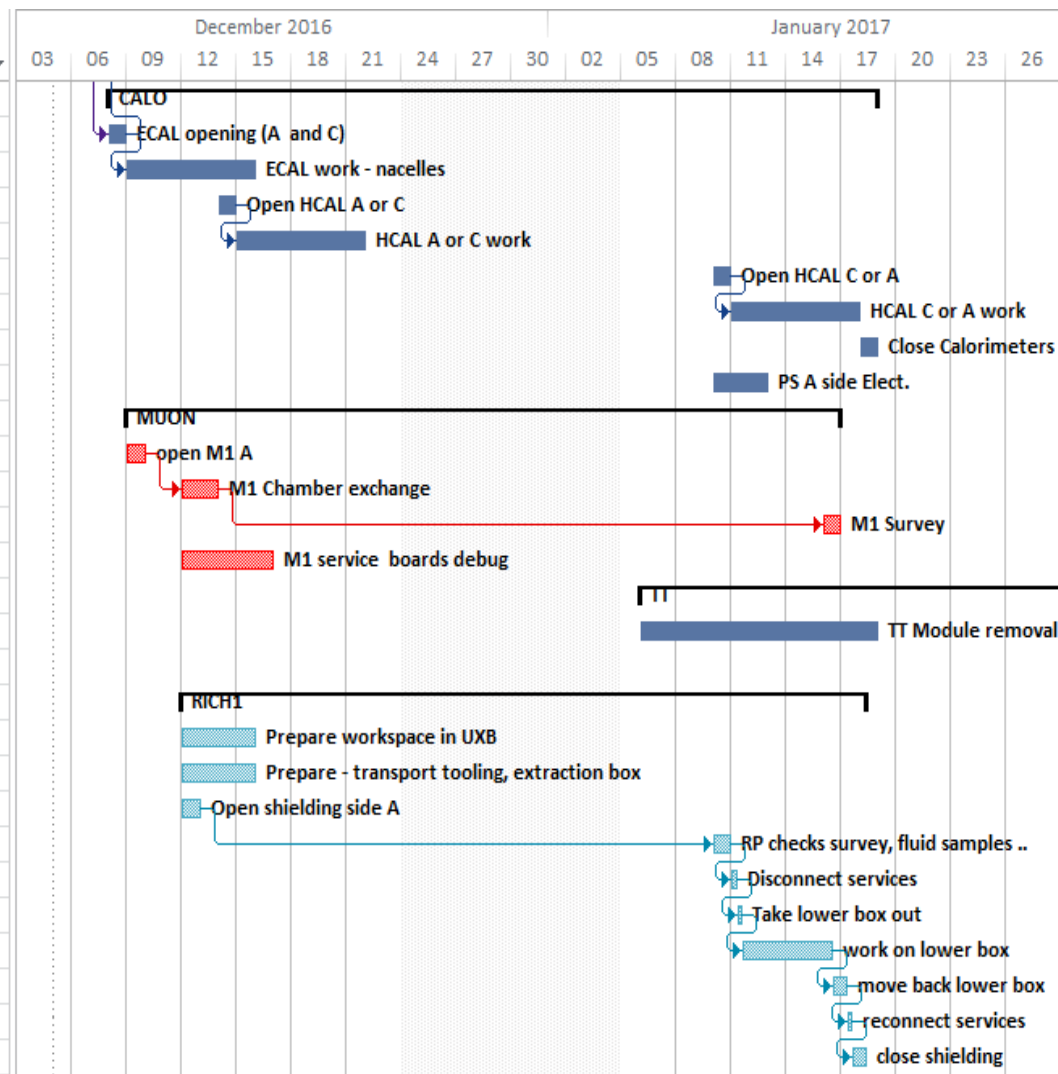


LHCb planning



LHCb planning

	Task Name	Duration	Start
47	▣ CALO	20 days?	Thu 08/12/16
48	ECAL opening (A and C)	1 day?	Thu 08/12/16
49	ECAL work - nacelles	5 days	Fri 09/12/16
50	Open HCAL A or C	1 day	Wed 14/12/16
51	HCAL A or C work	5 days	Thu 15/12/16
52	Open HCAL C or A	1 day?	Tue 10/01/17
53	HCAL C or A work	5 days	Wed 11/01/17
54	Close Calorimeters	1 day?	Wed 18/01/17
55	PS A side Elect.	3 days	Tue 10/01/17
56	▣ MUON	17 days?	Fri 09/12/16
57	open M1 A	1 day?	Fri 09/12/16
58	M1 Chamber exchange	2 days	Mon 12/12/16
59	M1 Survey	1 day?	Mon 16/01/17
60	M1 service boards debug	5 days	Mon 12/12/16
61	▣ TT	77 days	Fri 06/01/17
62	TT Module removal	9 days	Fri 06/01/17
63	TT Module re-installation	2 days	Thu 20/04/17
64	▣ RICH1	17.1 days?	Mon 12/12/16
65	Prepare workspace in UXB	4 days	Mon 12/12/16
66	Prepare - transport tooling, extraction box	4 days	Mon 12/12/16
67	Open shielding side A	1 day?	Mon 12/12/16
68	RP checks survey, fluid samples ..	1 day?	Tue 10/01/17
69	Disconnect services	0.1 days	Wed 11/01/17
70	Take lower box out	0.5 days	Wed 11/01/17
71	work on lower box	3 days	Wed 11/01/17
72	move back lower box	0.5 days	Mon 16/01/17
73	reconnect services	0.5 days	Tue 17/01/17
74	close shielding	0.5 days	Tue 17/01/17



LHCb planning

Task Name	Duration	Start
75 VELO-UT Transfer lines	19 days?	Mon 05/12/16
76 Supports: risk assesment by RP	1 day?	Mon 05/12/16
77 Supports: Transport of material	1 day?	Mon 05/12/16
78 VIC Supports and Shielding	1 day?	Tue 06/12/16
79 Dismantling iron plates shielding wall A&B	2 days	Wed 07/12/16
80 Remove sand bags and concreteblocs (?) - local storage	2 days	Fri 09/12/16
81 Marking position of support	3 days	Tue 13/12/16
82 Installation of Supports	10 days	Fri 16/12/16
83 VIC Line Installation Cryosystem	1 day?	Mon 09/01/17
84 Open Shielding wall	1 day?	Tue 06/12/16
85 Transport material CRYOSYSTEM	1 day?	Tue 10/01/17
86 LINE INSTALLATION Cryosystem	79 days?	Wed 11/01/17
87 Welding exam	1 day?	Wed 11/01/17
88 Pipes assembly	2 days	Thu 12/01/17
89 Process pipe orbital welding	3 days	Wed 11/01/17
90 RT and Helium Leak test	2 days	Mon 16/01/17
91 Welding for pipes 26,67x2,87	3 days	Wed 18/01/17
92 He leak test	1 day?	Mon 23/01/17
93 Armaflex wrapping	2 days	Mon 23/01/17
94 Pressure test	1 day?	Wed 25/01/17
95 Close Shielding wall	1 day?	Fri 20/01/17
96 Junction box installation	5 days	Mon 24/04/17
97 PR720&721 Revamping, AS713	75 days?	Mon 16/01/17
98 detector protection : net	3 days	Mon 16/01/17
99 detector protection : Scaff: transport	2 days	Thu 19/01/17
100 Detector protections: Scaff : install	5 days	Mon 23/01/17
101 Work PR	55 days	Mon 30/01/17
102 Test and qualification	5 days	Fri 14/04/17
103 Protections removal	5 days	Fri 21/04/17
104 AS713 replacement	46 days?	Mon 13/02/17
105 Micellaneous	50 days?	Mon 05/12/16
106 Cranes electronic install	1 day?	Mon 05/12/16
107 Hi-FOG water mist (UX+barracks)	4 days	Mon 09/01/17
108 Maintenance Gas SG8	1 day?	Fri 24/02/17
109 Visit EPFL	1 day	Tue 13/12/16
110 Visit EPFL JBL	1 day?	Wed 07/12/16
111 Visit Swedish teacher	1 day?	Mon 23/01/17

