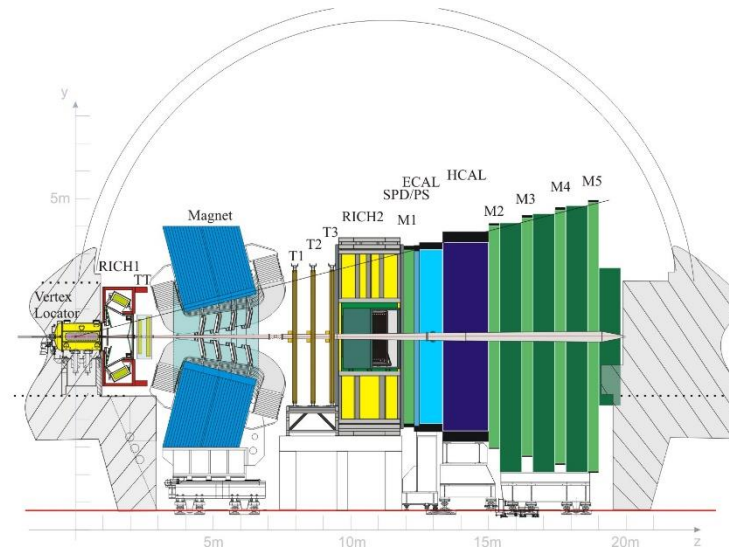
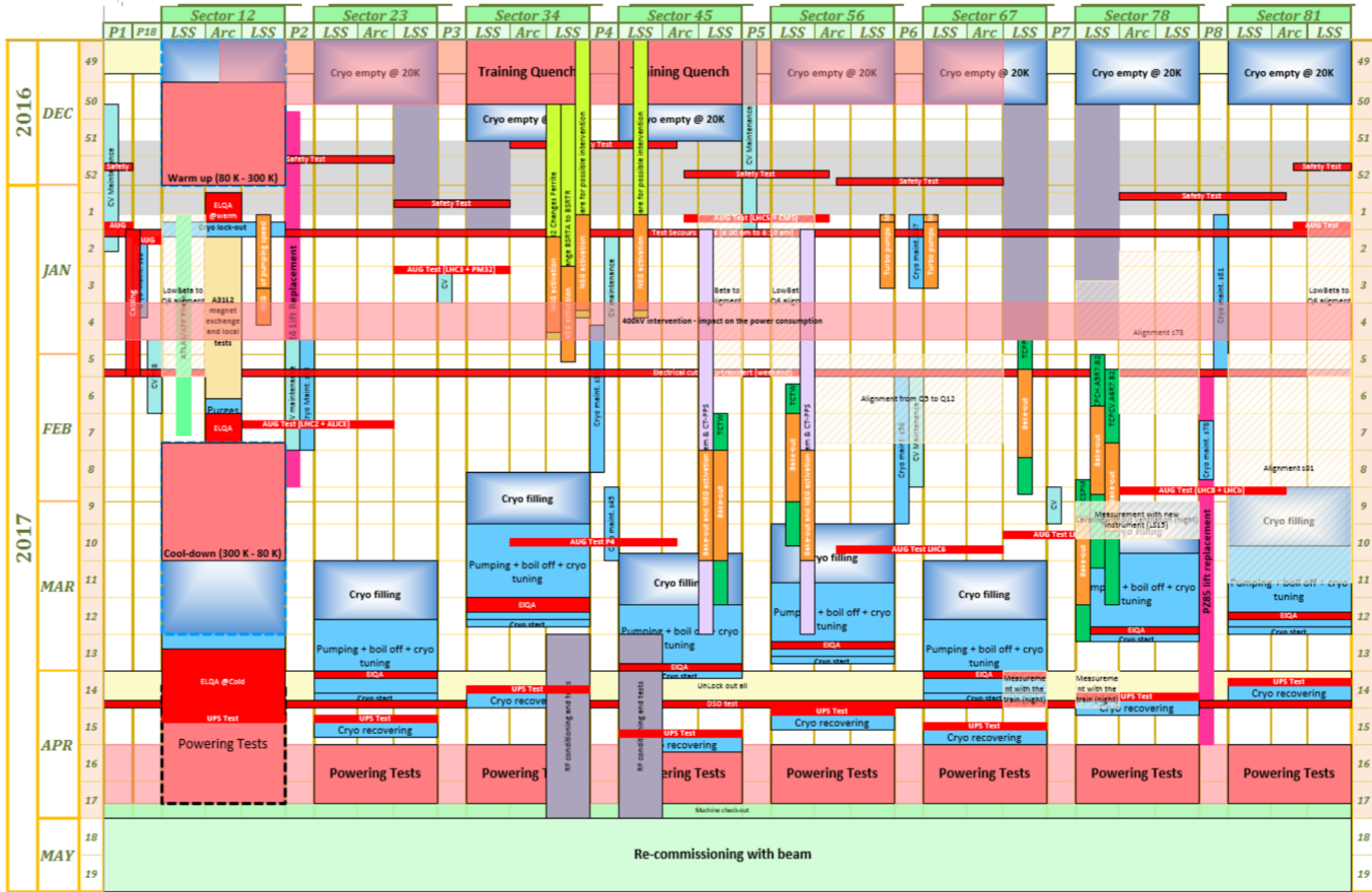


# LHCb & EYETS

## 2016-2017

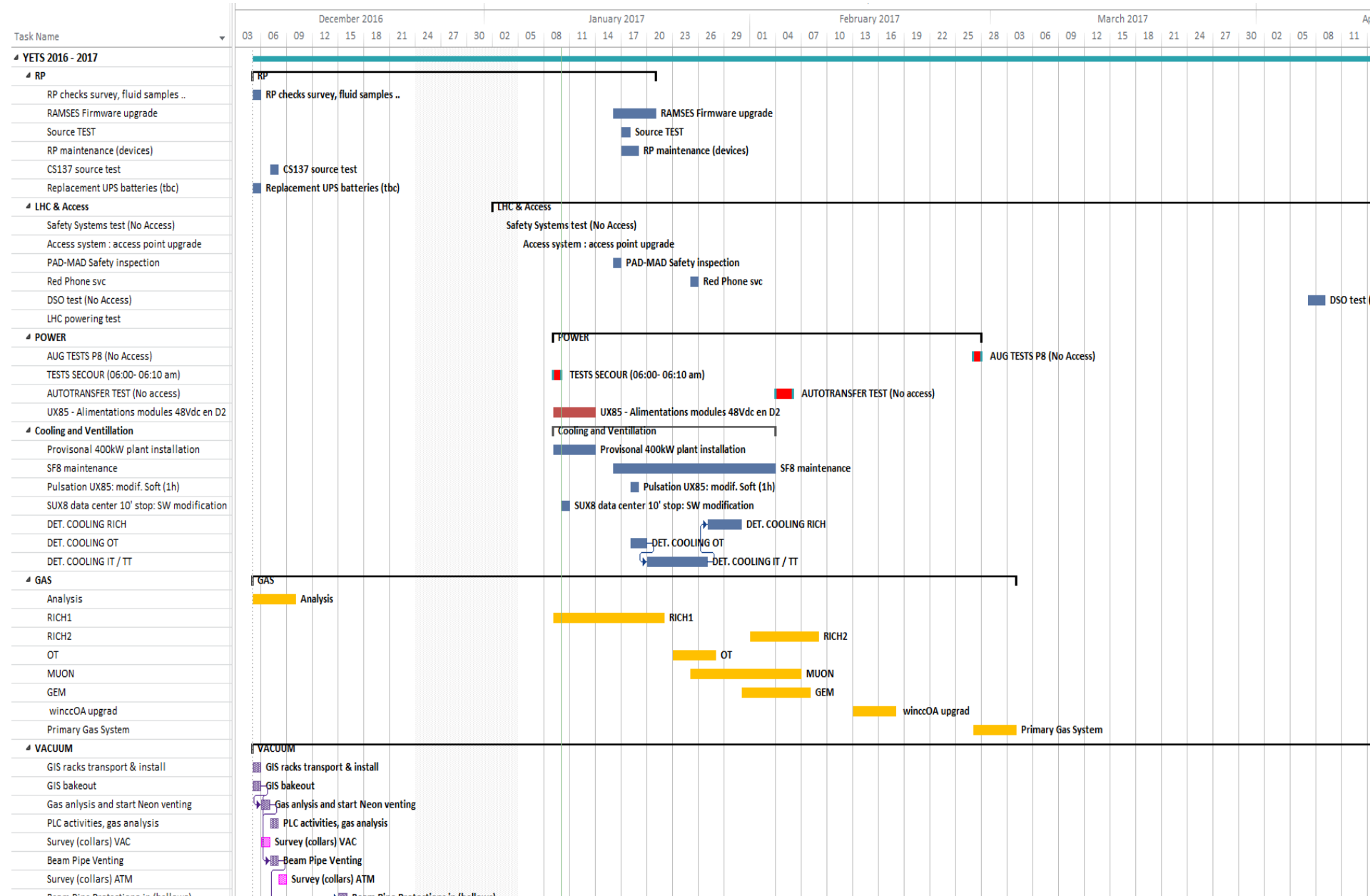


# LHC planning

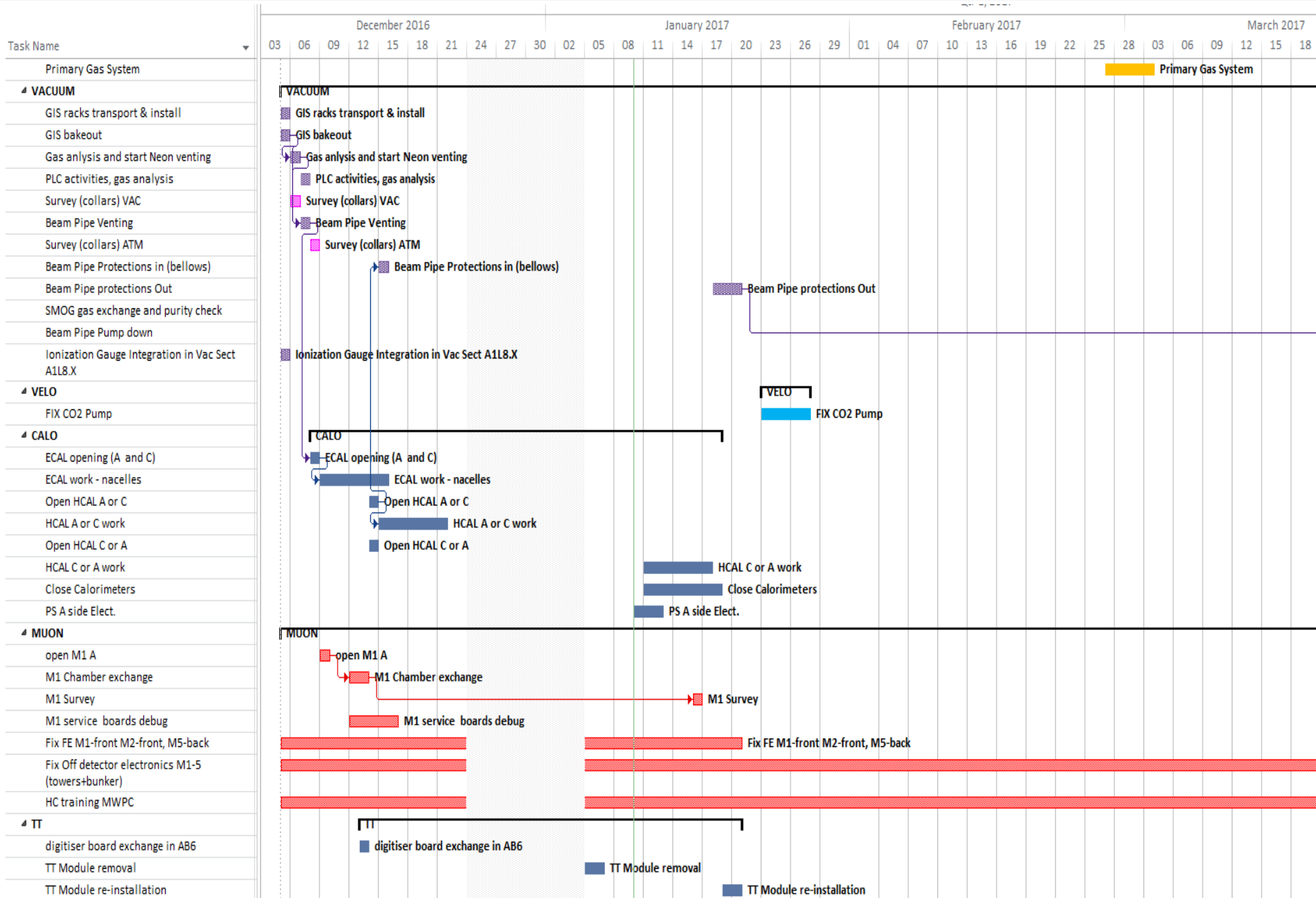


- **VELO:** Fix CO2 pump
- **RICH1+2:** HPD box RICH1 A-side out (FE electronics & HPD). HPD exchange (RICH2).
- **TT:** Repair broken bonds (3 modules removed and shipped to Zurich). Replace dead VCSEL.
- **Dipole:** Tightening current feed connectors, MSS PLC upgrade.
- **IT:** -
- **OT:** -
- **ECAL/HCAL:** Change PMTs, CS 137 Scan, passive dosimeters exchange
- **PS/SPD:** fix SPD VFE LV distribution, PRS VFE replacement, passive dosimeters exchange
- **M1:** A Side open - fix chamber M20A1 (FEB) + other FE issues
- **M2-M5:** Fix FE electronic issue on M2-front and M5-back, debugging of some electronic Boards (Towers). HV training...
- **Herschel** L0/Scintillators replacement

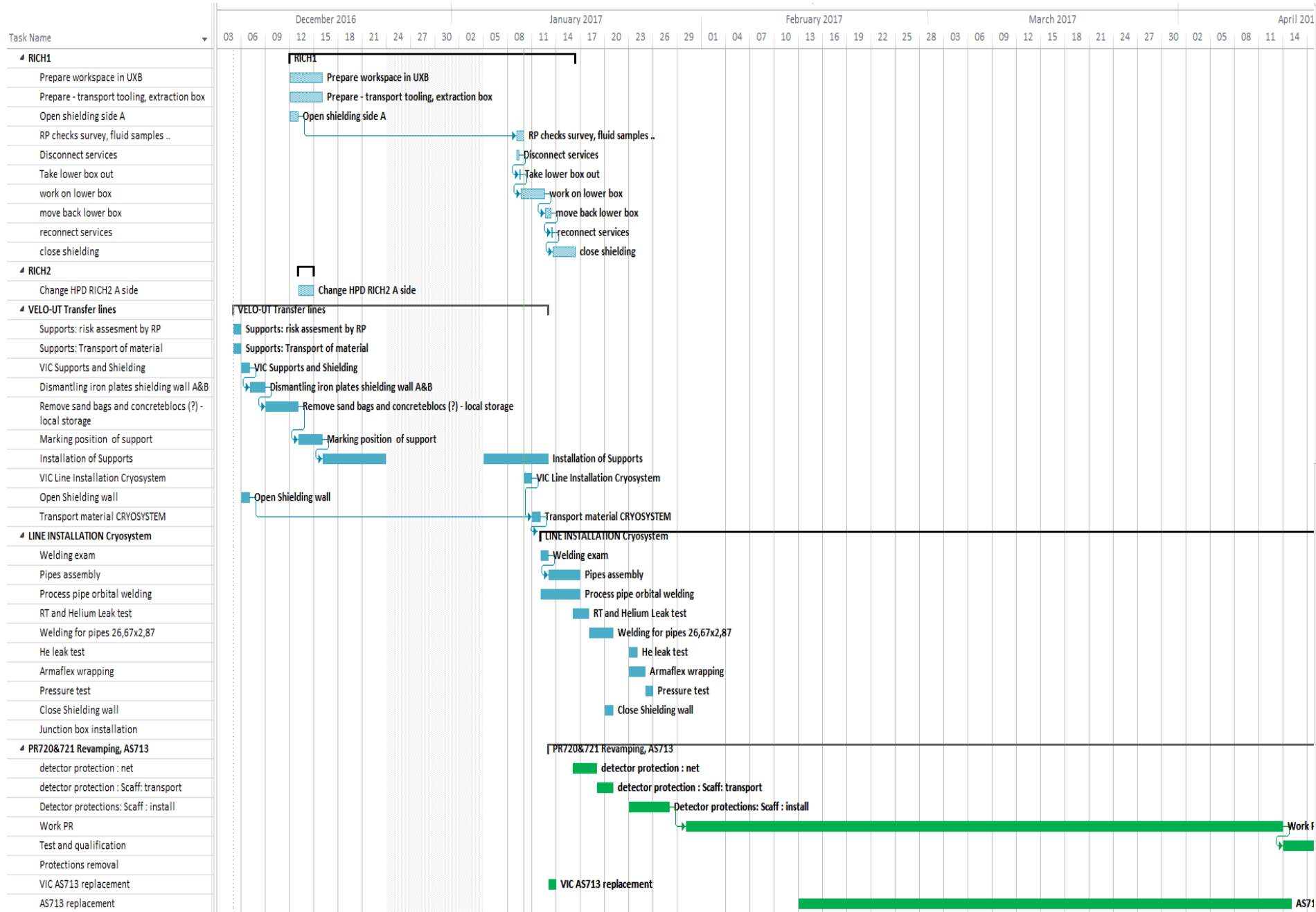
# Planning



# Planning

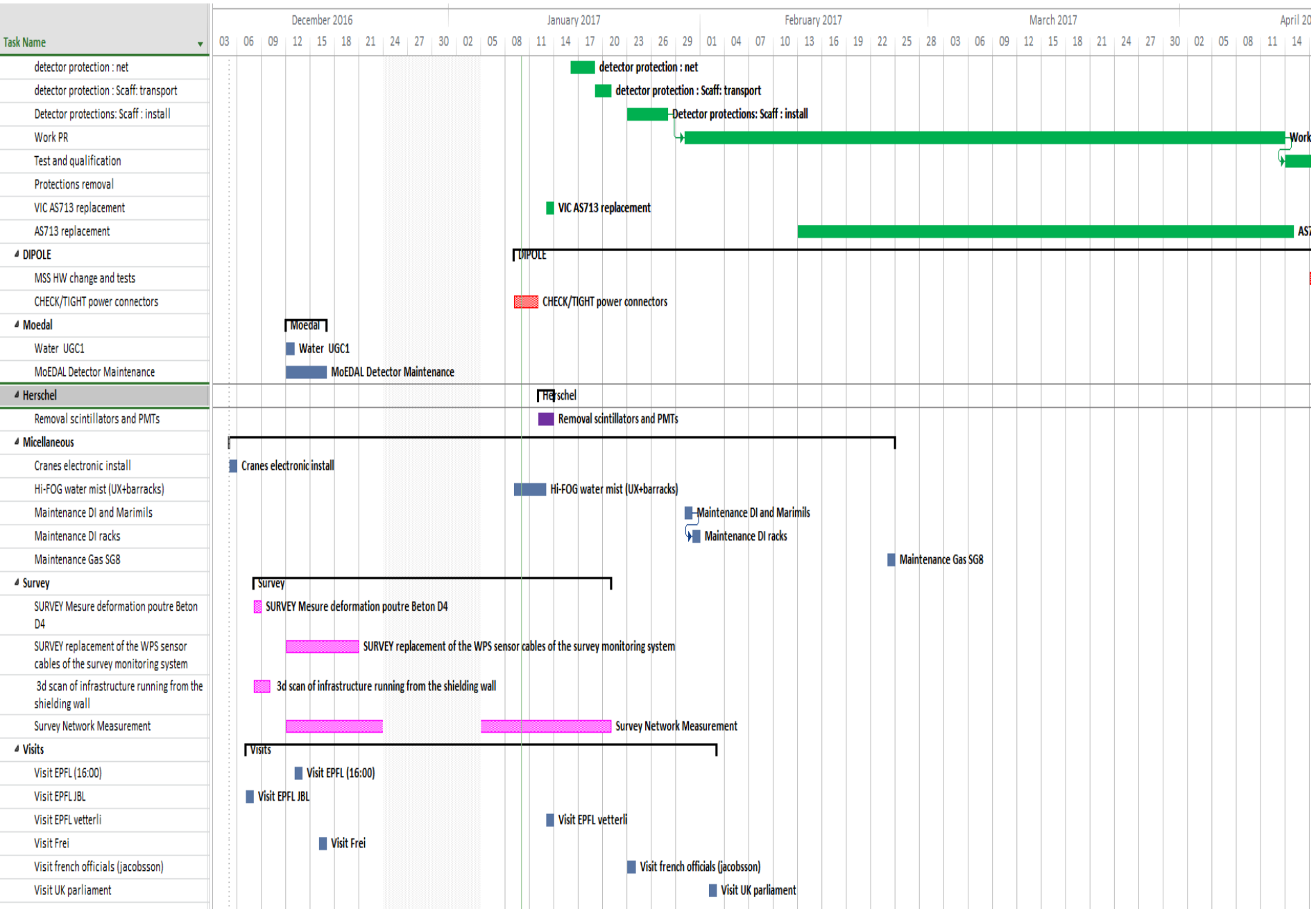


# Planning





# Planning

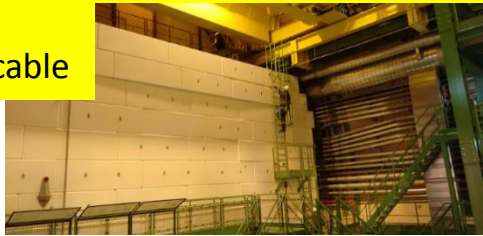


# Day 1 (Dec 5)

- ✓ Material for
  - TT
  - CO2 cooling/control box/cable



- ✓ Preparing transfer lines support



- ✓ New (rented) nacelle for CALO



- ✓ SMOG gas analysis



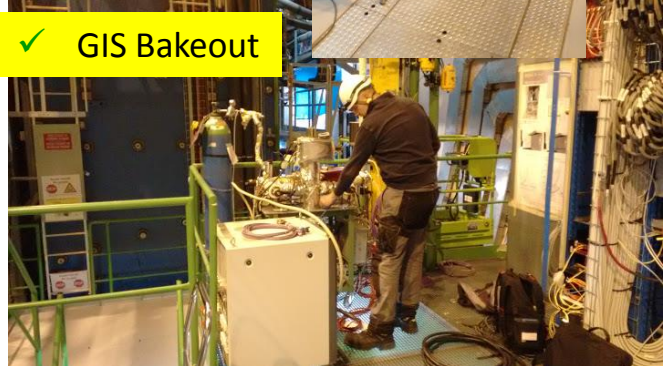
- ✓ MUON HV training



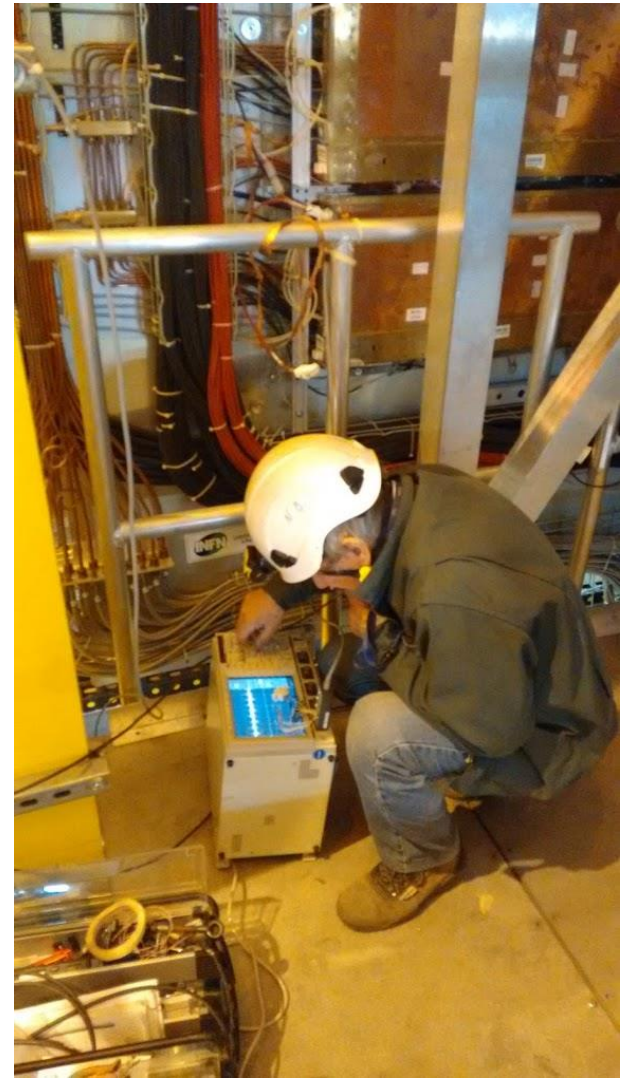
- ✓ PR787 crane electronic (RICH1)



- ✓ GIS Bakeout

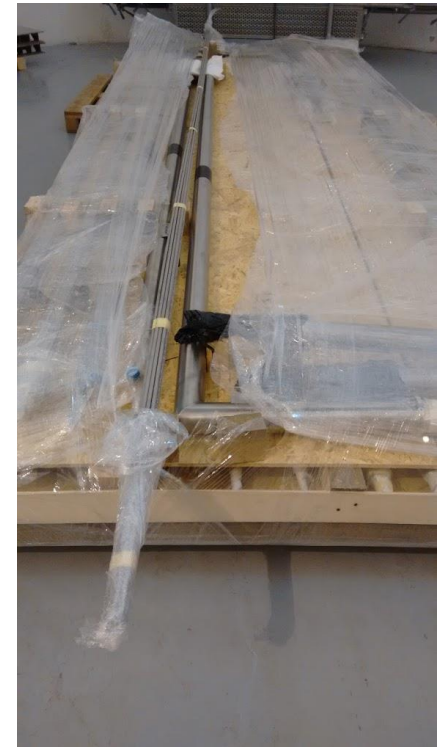






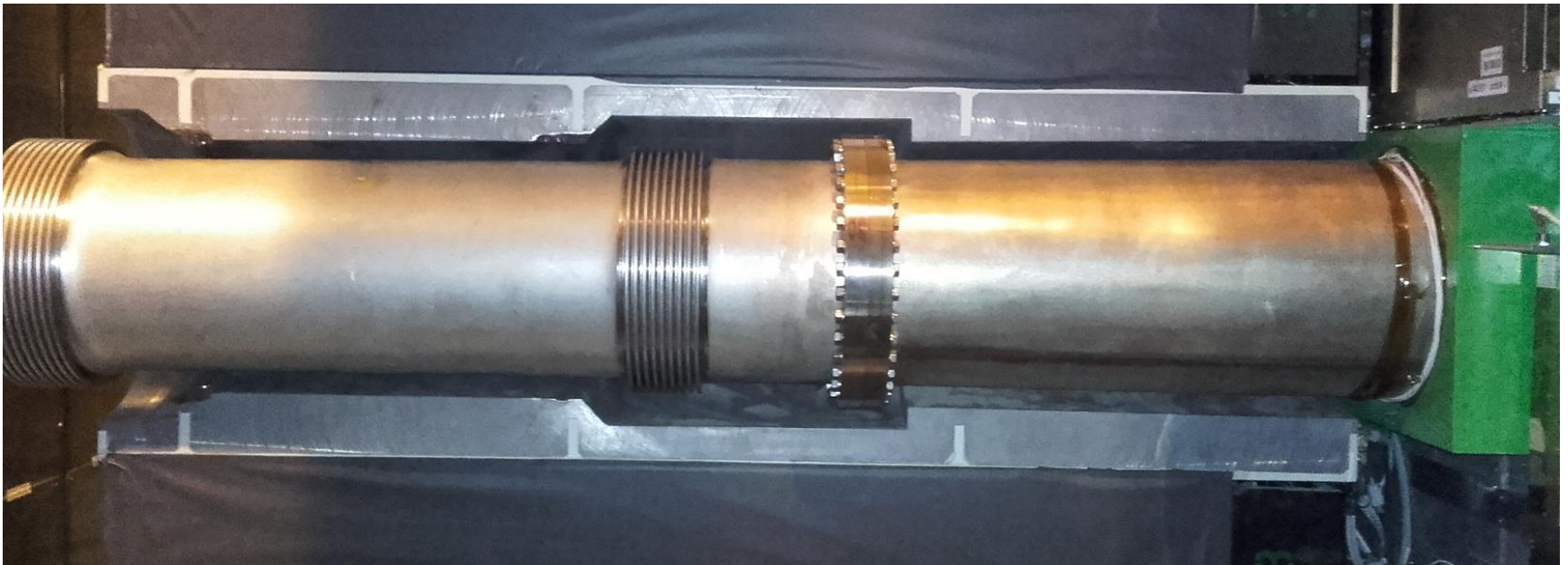
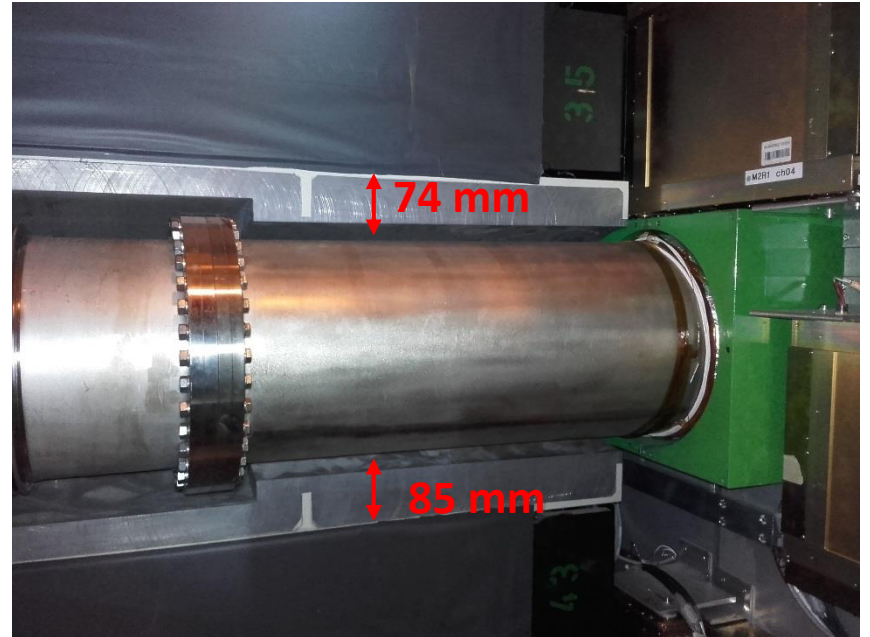
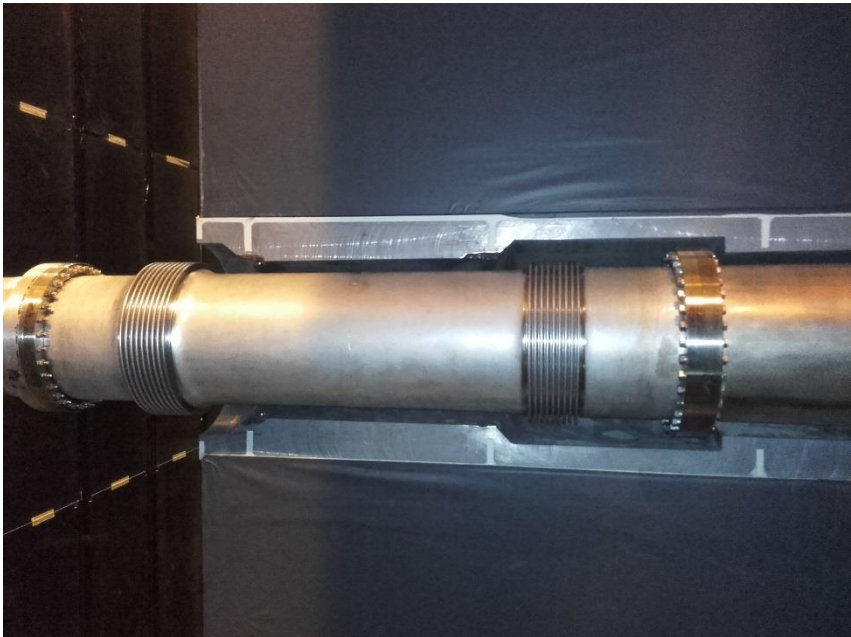


# CO2 transfer lines





# Improved Muon Shielding

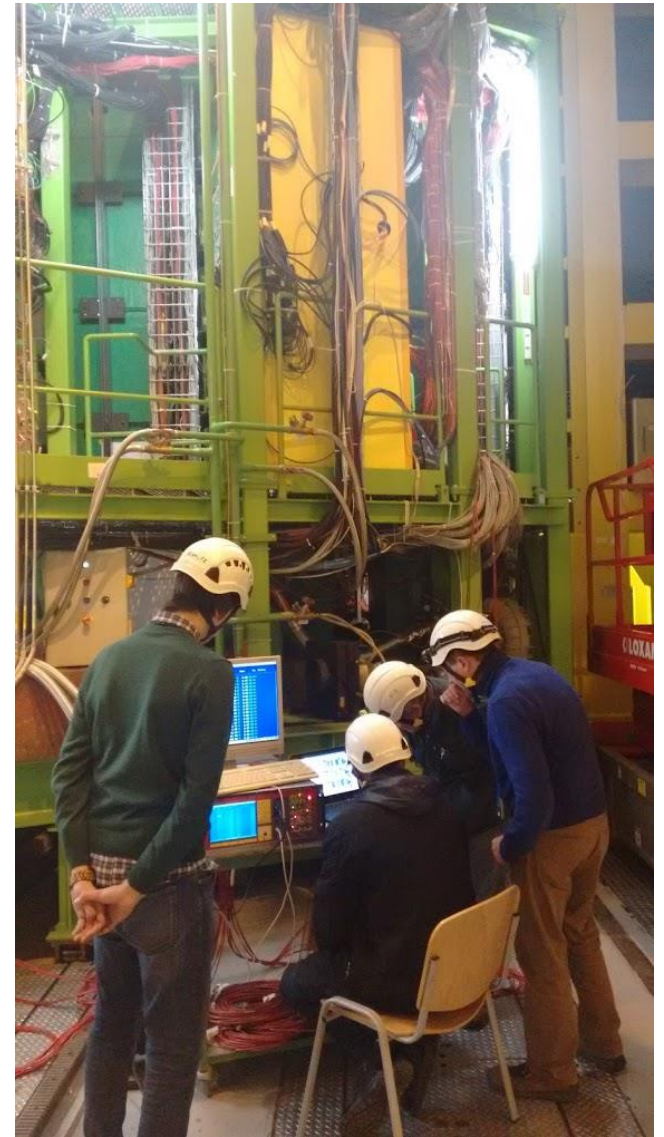


# Back side of HCAL



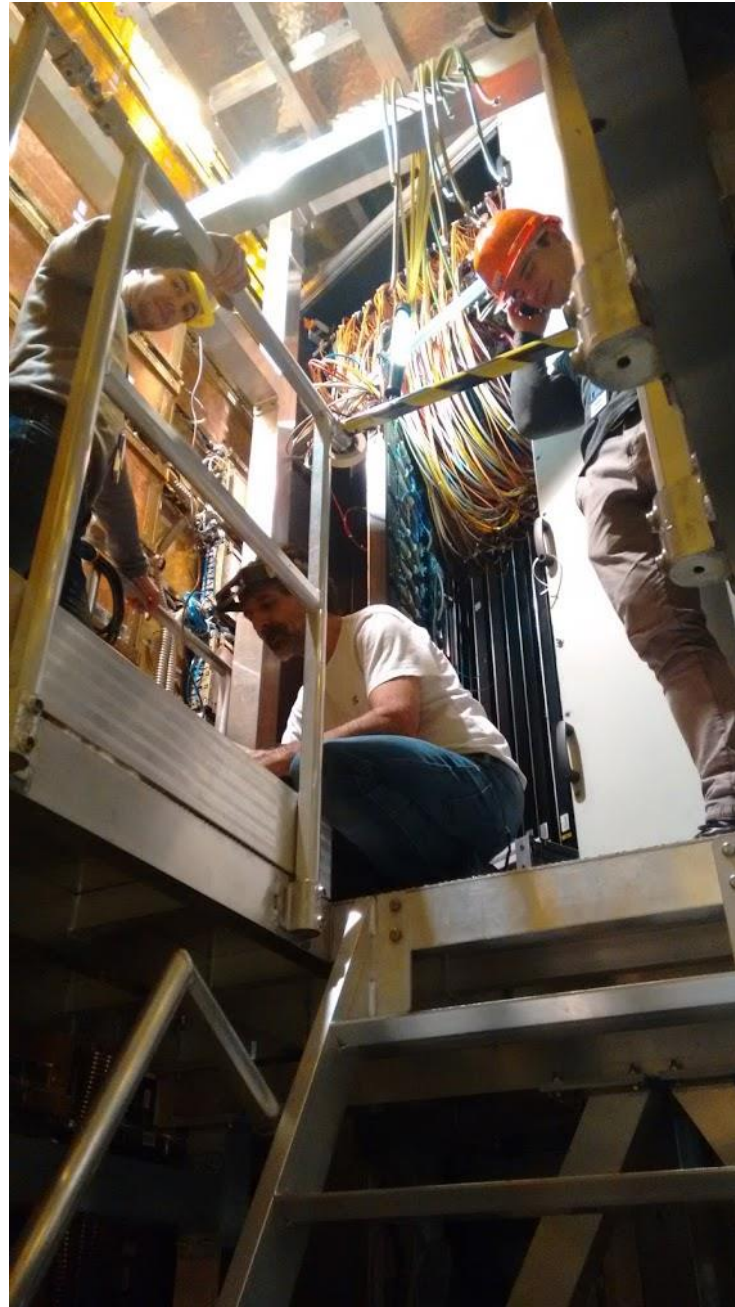


# M2-5 HV training



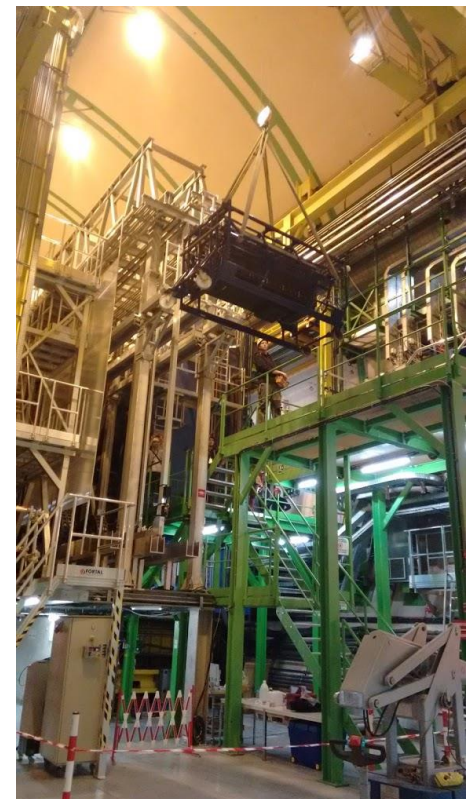
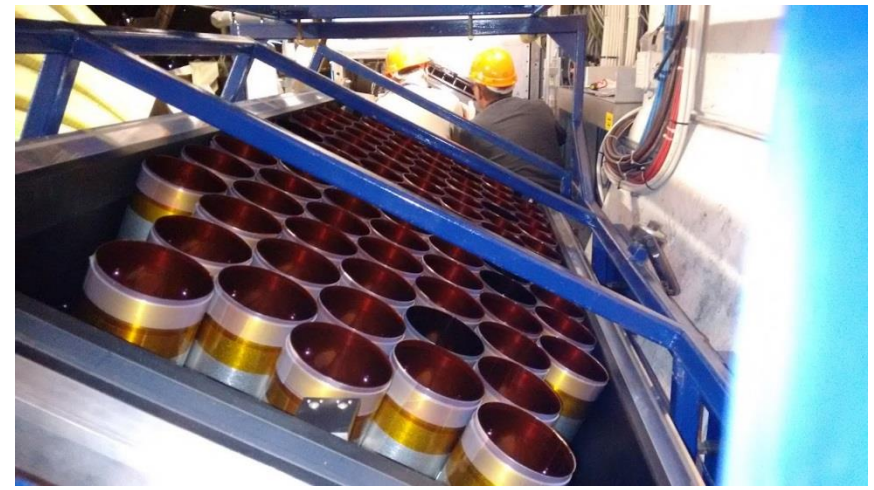






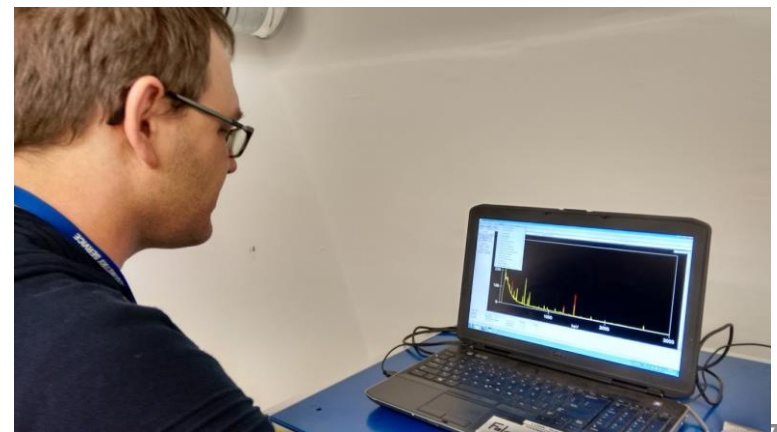
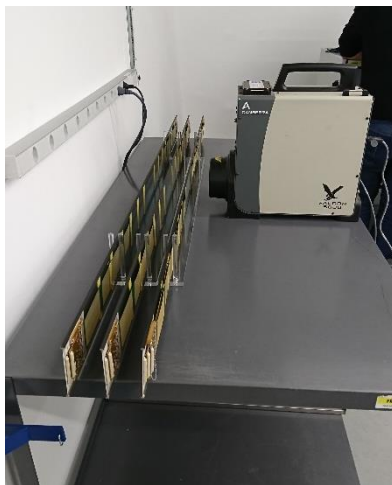
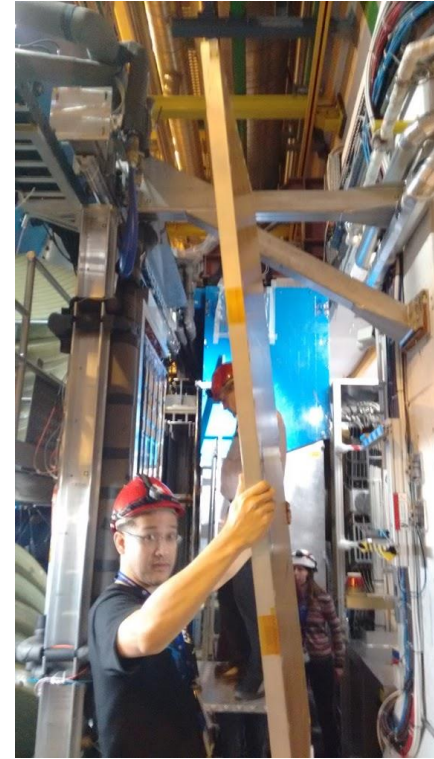
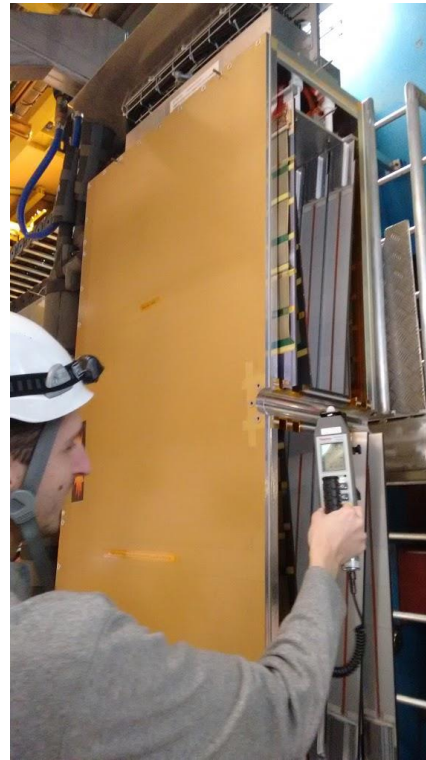


# RICH1



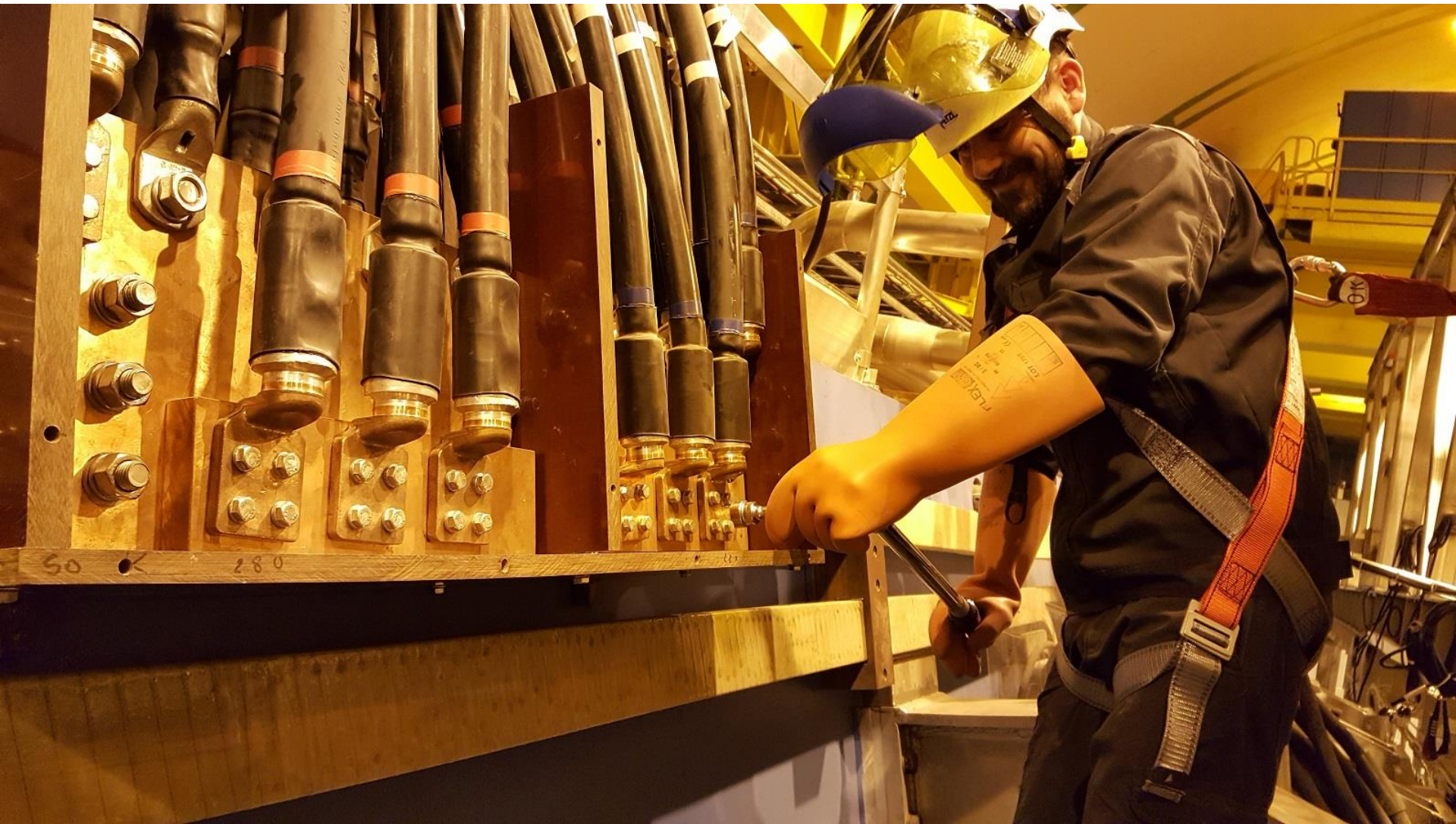


# Opening TT





# Dipole



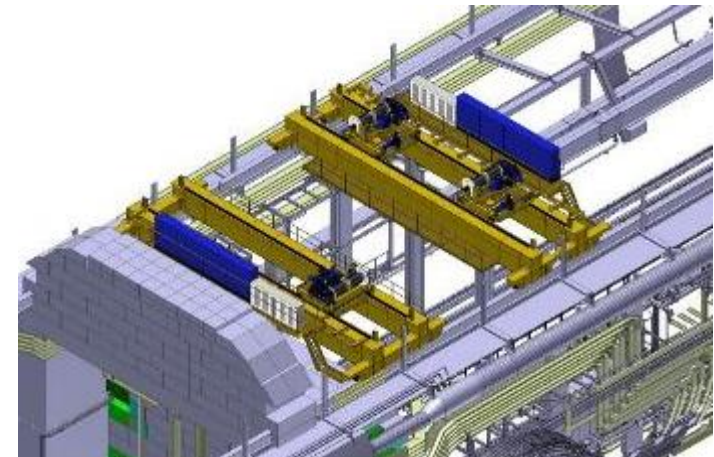


# Cranes revamp.



# EYETS: Main tasks and constraints

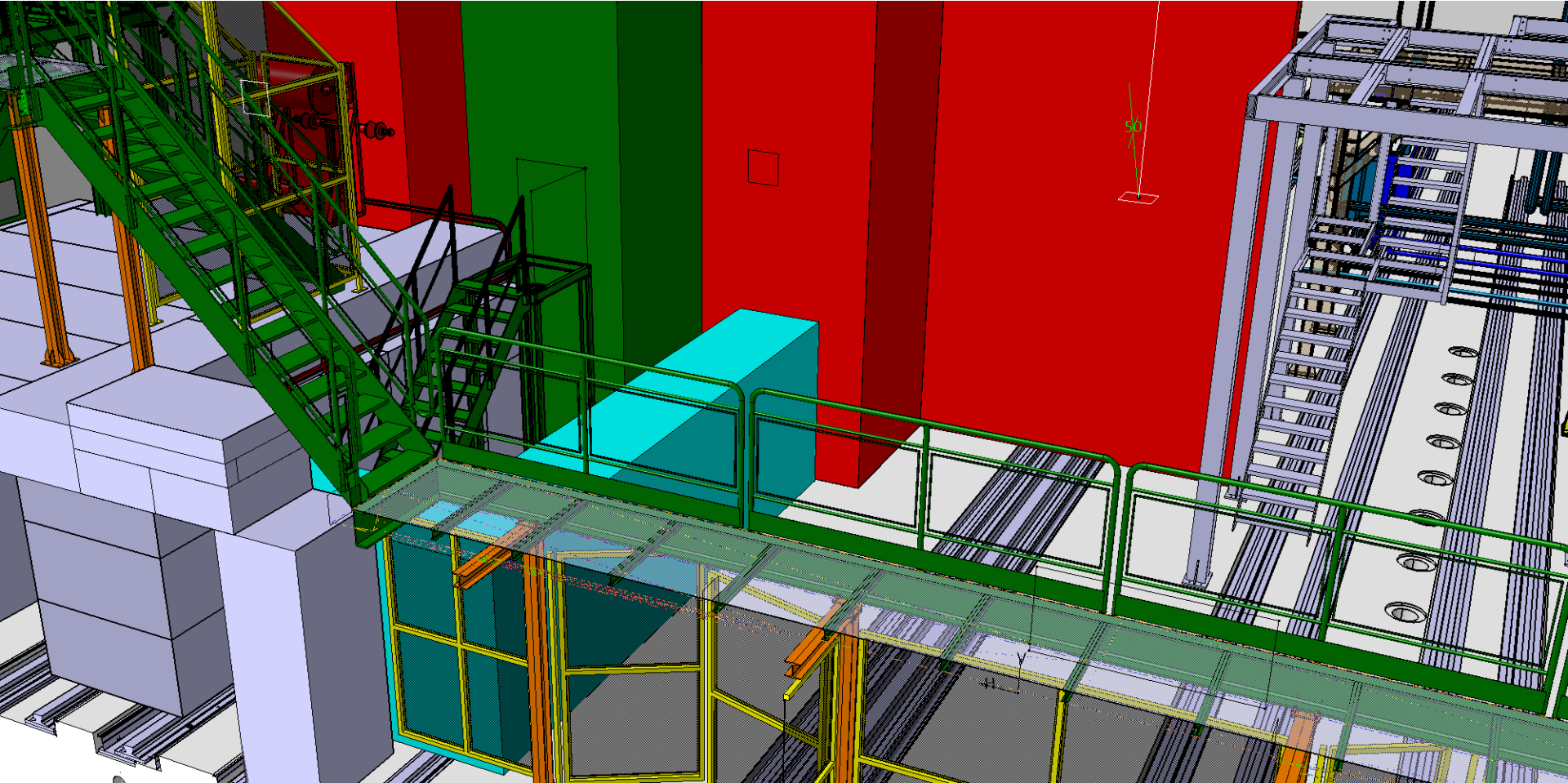
- Replacement AS713 (PZ85 lift) by EN-HE
  - **Schedule: 06/02/17 -14/04/17**
  - **Access via PM85 shaft**
  - **Access condition EDMS1682496**
  
- Revamping PR720&PR721 (UX85 80t overhead cranes) by EN-HE
  - **Schedule: Jan 30 – 14/04/17**
  - **Limited access to detector**



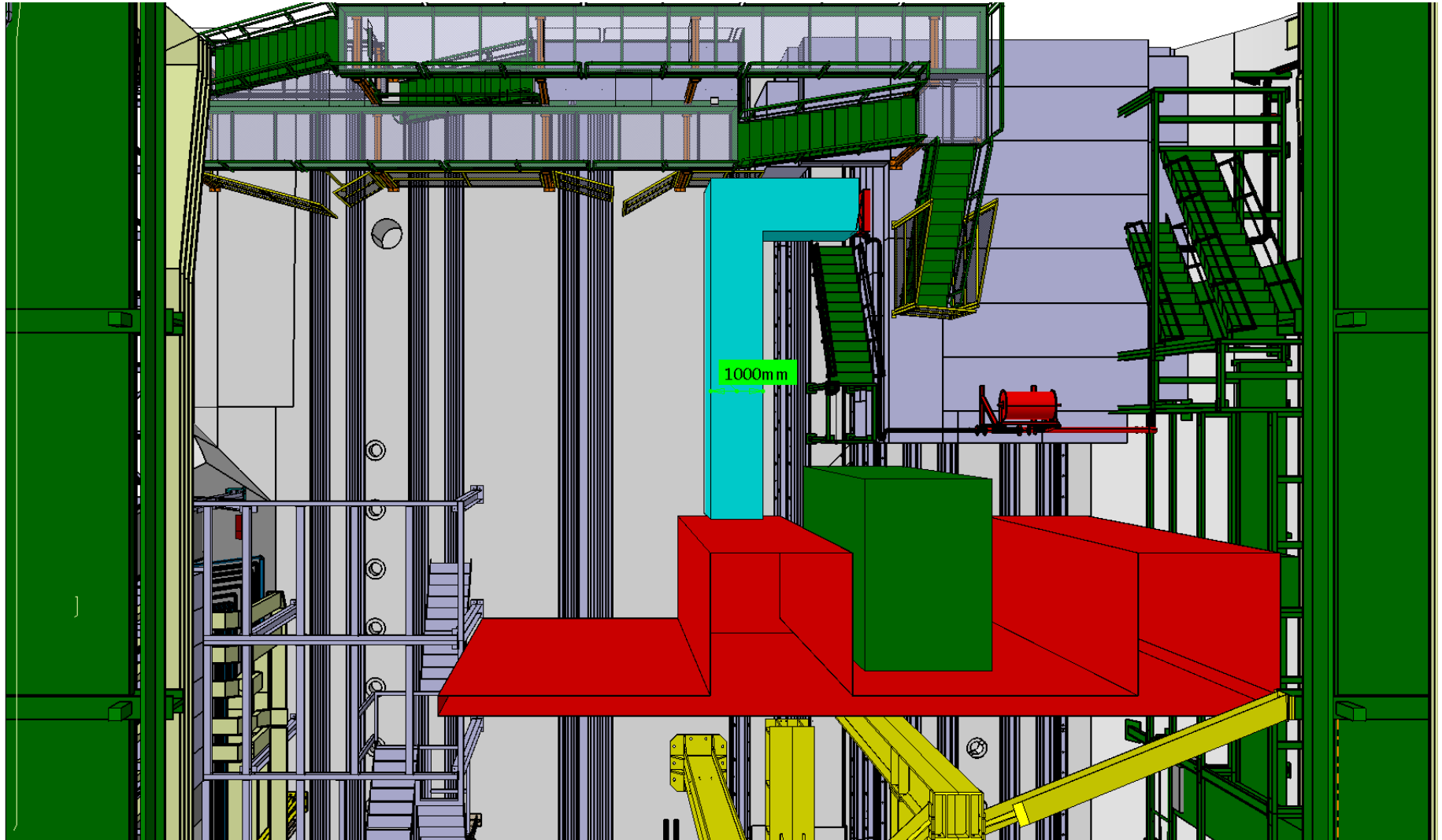
**Very limited Time window for detector work :**  
**From Dec 5 2016 to Jan 22 2017**



## Access to UXA during Cranes revamping (provisional design)



## Access to UXA during Cranes revamping (provisional design)



# Important dates

- EYETS from 5<sup>th</sup> of December 2016 @6am until April 30<sup>th</sup>
- LHC back to OP on 14<sup>th</sup> April (powering tests)  
(No access to CERN, incl. surfaces, offices ...)
- Experiments closed on 30<sup>th</sup> April

## **NO ACCESS during →**

- **AUG test P8: Feb 27<sup>th</sup> (incl. surface)**
- **Auto Transfer test Feb. 4-5<sup>th</sup> 2017**
- **DSO test April 7-8<sup>th</sup> (!Warning Patrol w14)**

# CV / P8 yearly maintenance

Weeks 3-4-5 From Jan 16<sup>th</sup> to Feb 3<sup>rd</sup> 2017

- Stop of SF, SU, UW facilities
- Mechanical cleaning of towers
- Mechanical and electrical maintenance

Back-up cooling power: **limited to 400kW**

