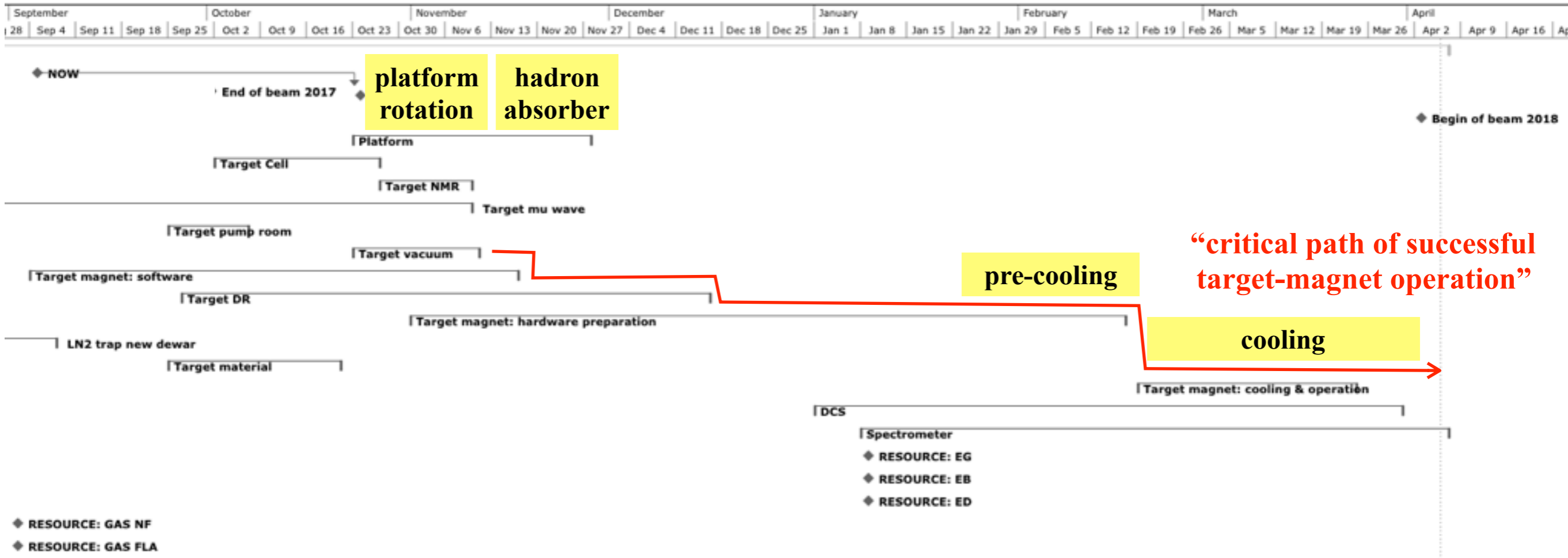


2018 planning

*Modifications of 2018 compared to 2015
will be discussed later this afternoon.*

Changeover GPD \Rightarrow DY

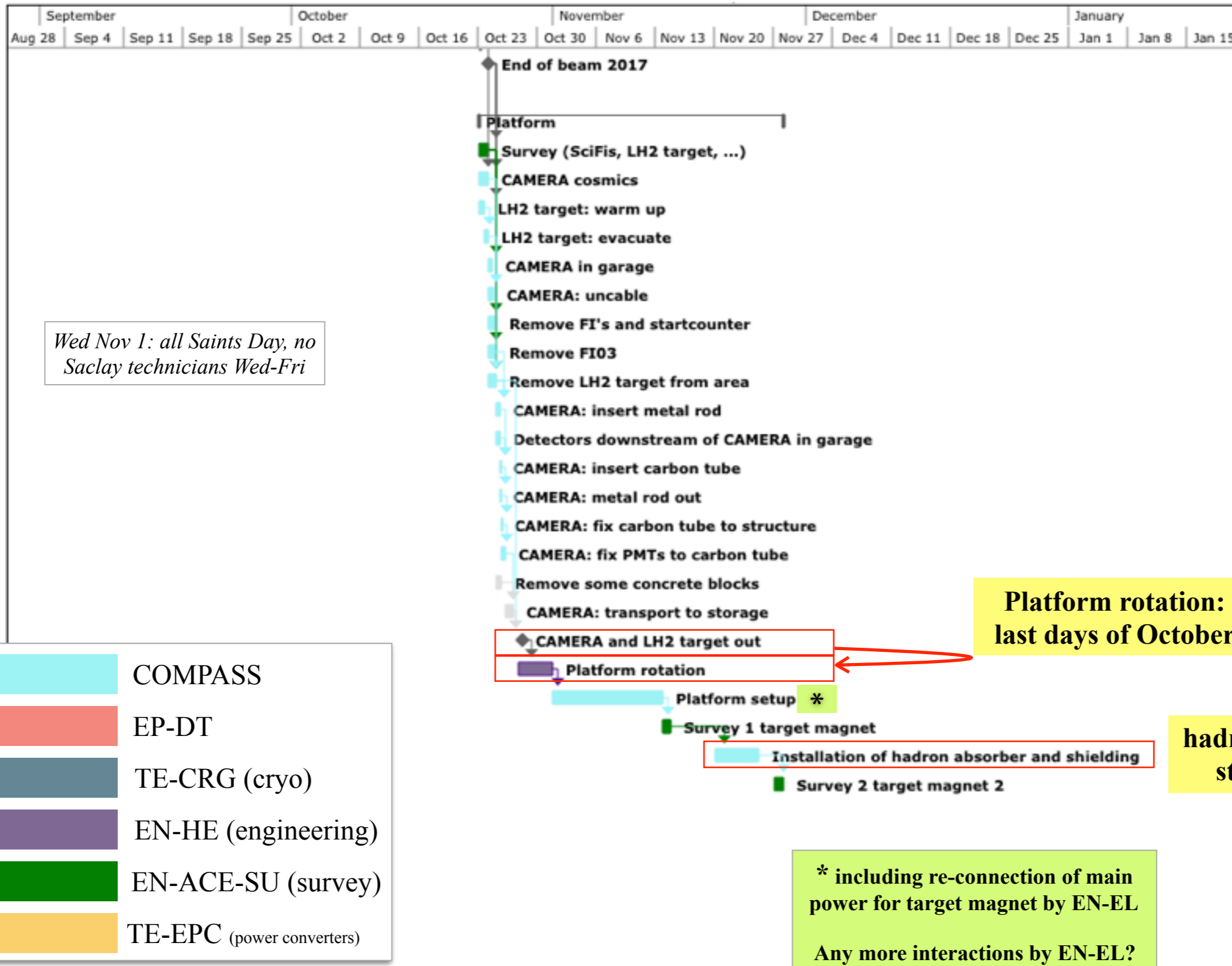
Overview



- EP-DT (Detector Technologies) is essential in commissioning target magnet.
- Recent meetings with EP-DT: July 21 (spokespersons, Gerd, Nori, CKR), August 22 (CKR) to synchronize the planning and optimize communication.

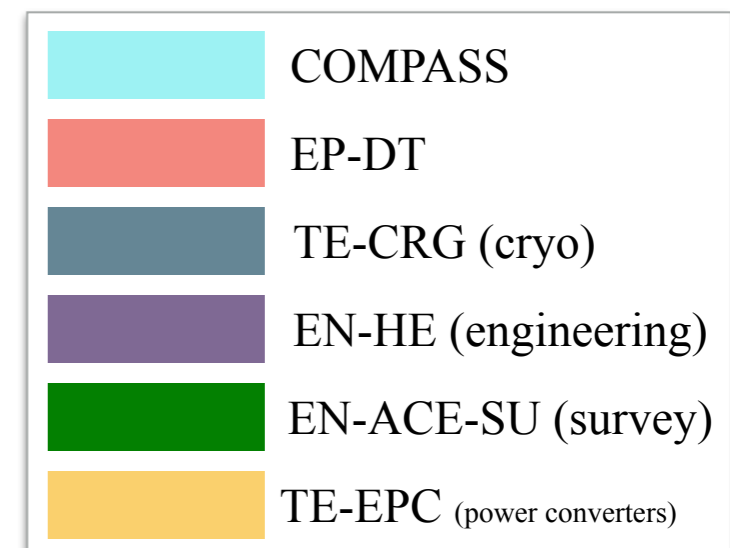
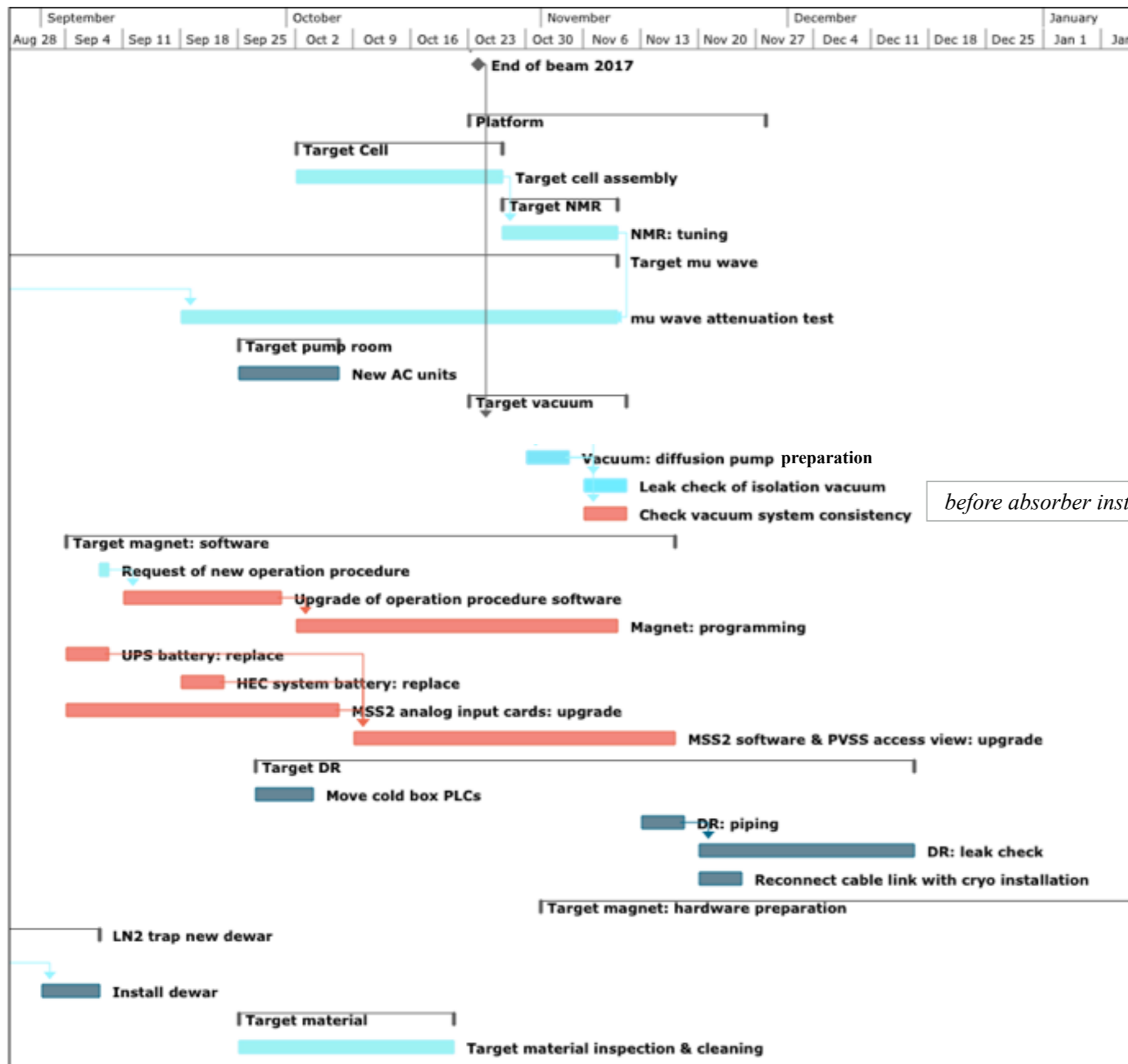
Changeover GPD \Rightarrow DY

CAMERA, LH2 target & platform



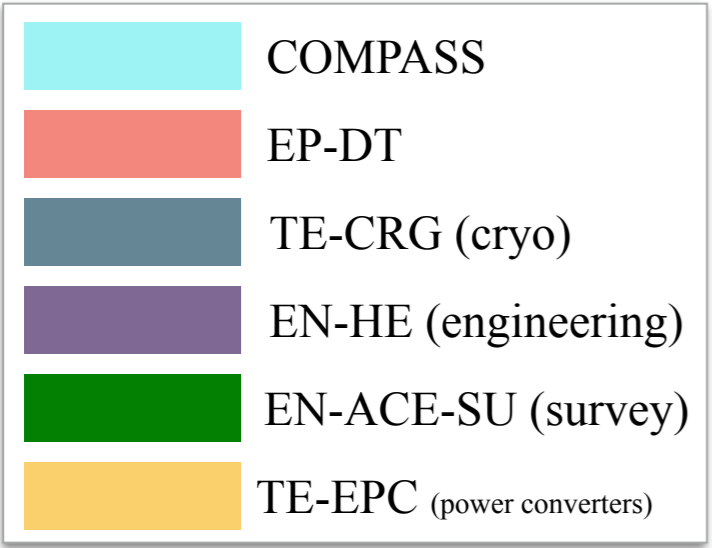
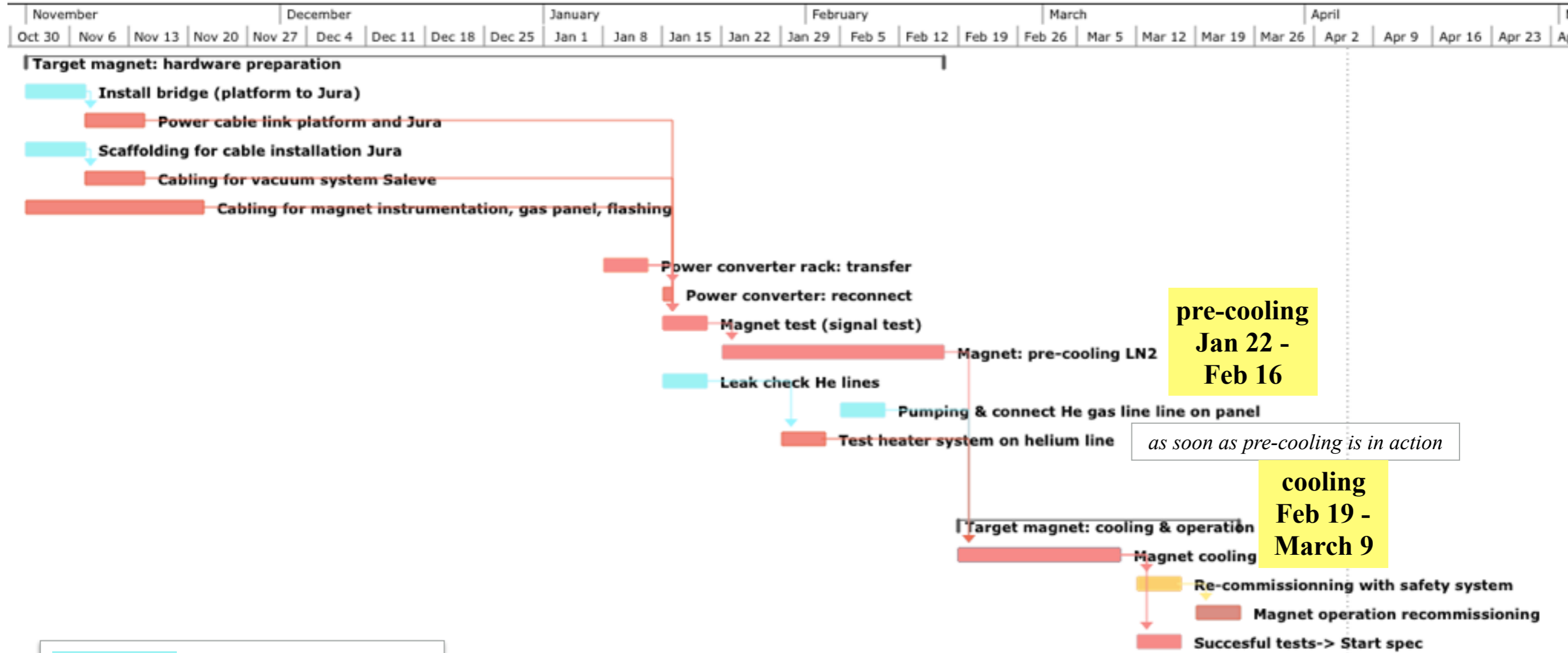
Changeover GPD \Rightarrow DY

Target preparation



Changeover GPD \Rightarrow DY

Target magnet



CERN support for change-over



(slide taken from Nick)

| Group | function | name | comment | Contacted? |
|----------------------|--|----------------------------|--|-------------|
| Various TE-CRG-ML | Helium, piping, magnets | L. Stewart, O. Pirotte | Reserve people, Check availability | yes |
| EN-EL | Electricity, cabling | N. Bellegarde | 400V, 48V, AUL | yes |
| TE-EPC-LPC | Power supplies | Y. Thurell | Ready Jan. 2018 | yes |
| DT-DI | Programming, connection | Ravat, Deront, Blanc, Pons | | yes |
| EN-HE | Platform, rotation, shielding | Bertone, Vallet | | yes |
| TE-CRG-OD | Helium consumption Cold box Dewar LN ₂ | Wagner, Bremer | Check for larger Dewar Check piquet service | yes |
| EN-EA | CEDAR/magnet support | F. Gautheron, J. Bernhard | | Asking soon |

Our COMPASS experts:

Target coordinator → **Nori**

MW → **Kaori** and **Yuri**

888 stuff, Transport, crane, etc. → **Vladimir**

Shielding → **Angelo**

Target magnet → **Nori, Jaakko**

Cryo → **Nori, Jakko**

Spectrometer → **TC**

Beam line etc. → **Beam Coordinator** and **TC**

EP-DT for polarized target : **Giovanna.Lehmann, Laurent Deront, Sylvain Ravat, Pascal Blanc**