

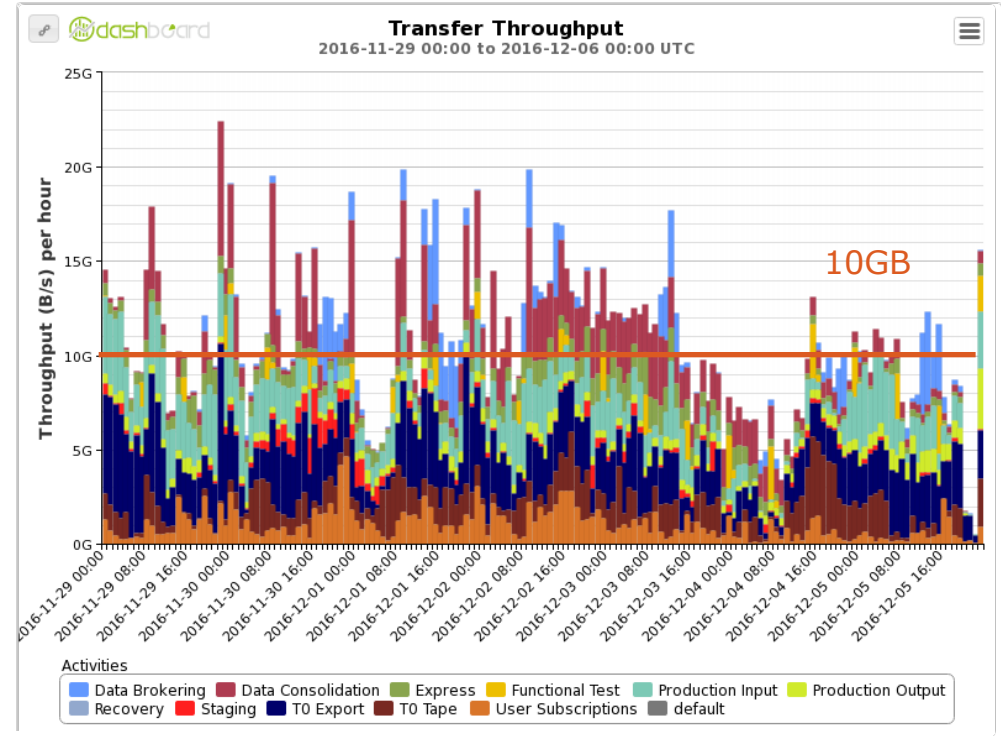
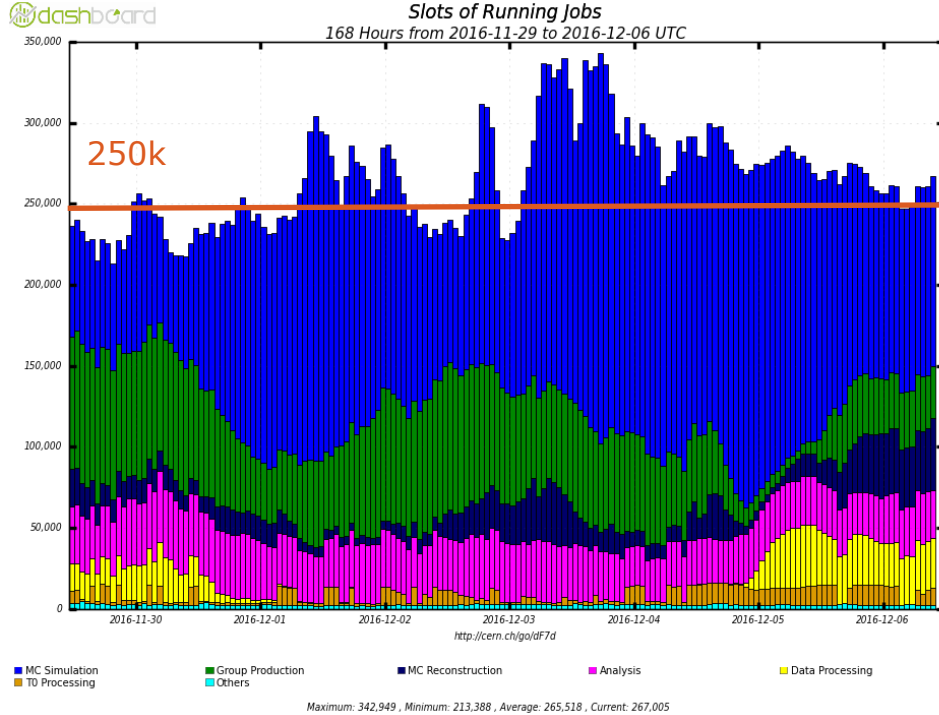
# **CRC/ADCoS Report**

## **Week: November 29 – December 06 2016**

**Sabine Crépe-Renaudin (CRC)**

**ADC Weekly Meeting**

# This week summary



## ADC activities

- Production

- Large amount of derivation production
- Urgent upgrade tasks
- MC Simulation
- Reprocessing of data16 with rel21 tests

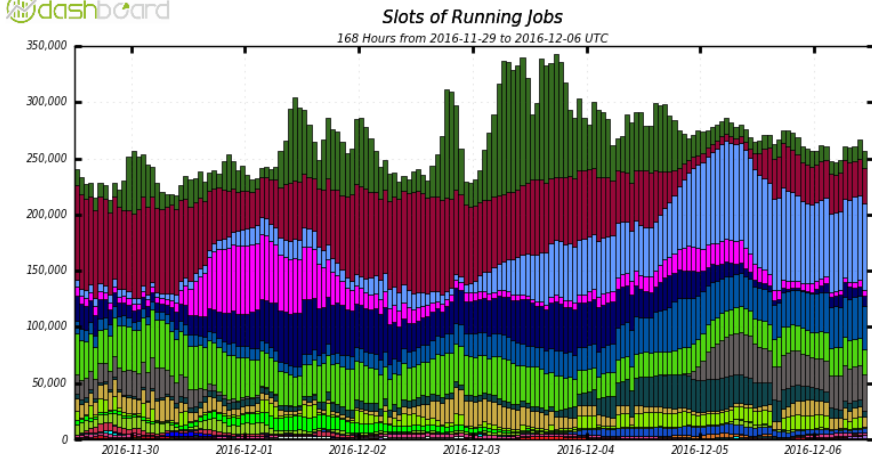
- Analysis

- T0

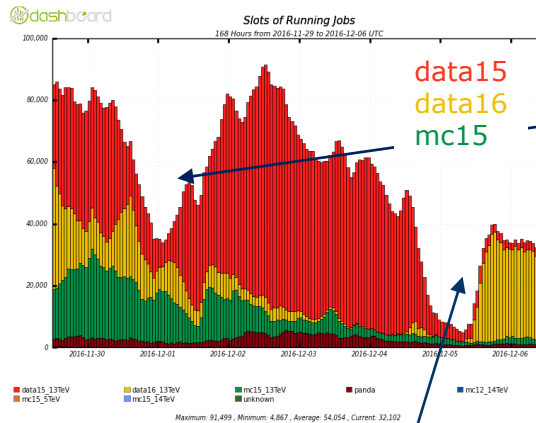
- Heavy Ion processing and reprocessing
- End of 2016 run !
- Beamspot reprocessing needing staging

→ **Whole system running smoothly, no major problems**

# This week illustrated: jobs



Maximum: 342,949, Minimum: 213,388, Average: 265,640, Current: 256,984



Maximum: 91,499, Minimum: 4,867, Average: 54,054, Current: 32,102

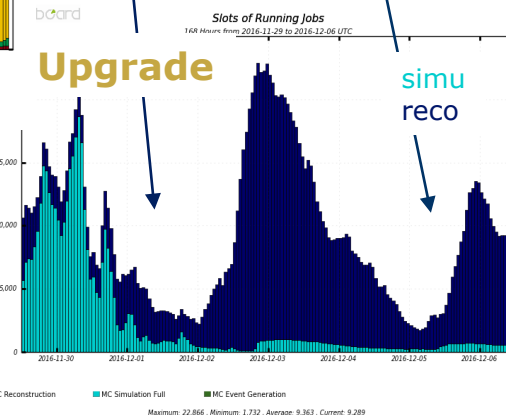
## Derivation

Global share for half the prod

Only jobs with high memory left

Share changed  
Relax  
number of  
job limit

## Upgrade

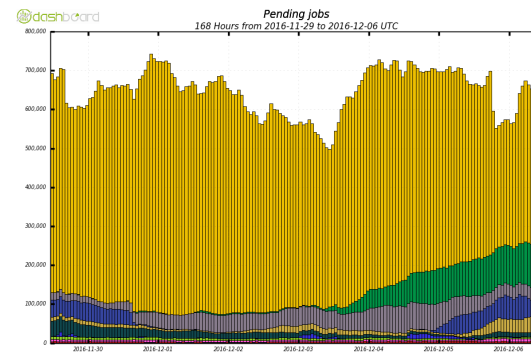


Maximum: 22,866, Minimum: 1,732, Average: 9,363, Current: 9,289

**Production:** Difficulties to get the good share between the different activities and allow derivation and upgrade tasks to complete rapidly

- transition between fair-share to global share didn't help
- Merging of derivation tasks is done on 1 core and takes time
- Some jobs of urgent upgrade task need high memory => only few sites available to run such tasks
- Lack of monitoring to evaluate total of jobs/event still to be processed

## Pending jobs

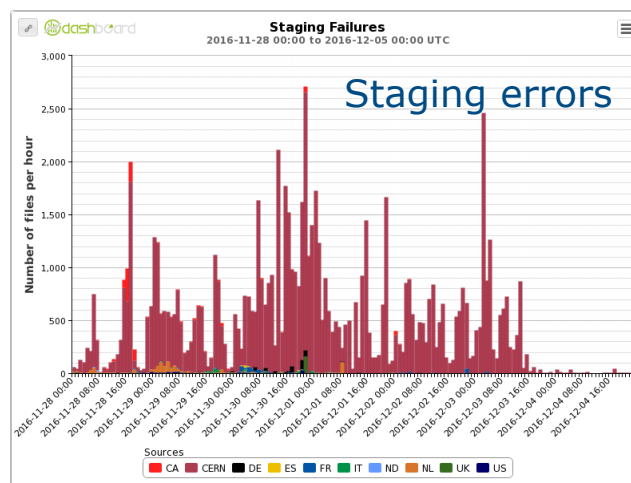
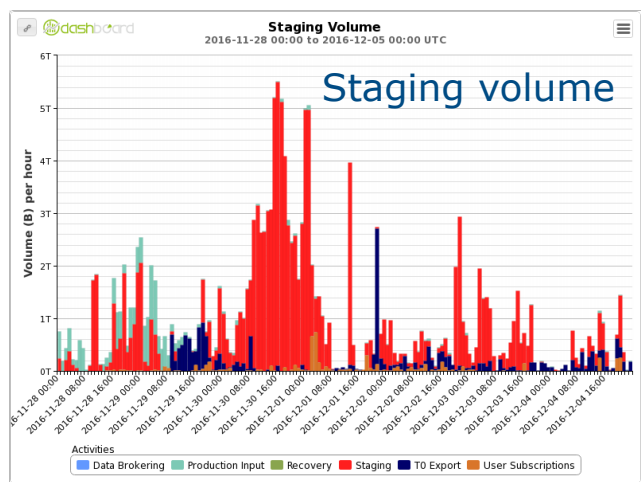
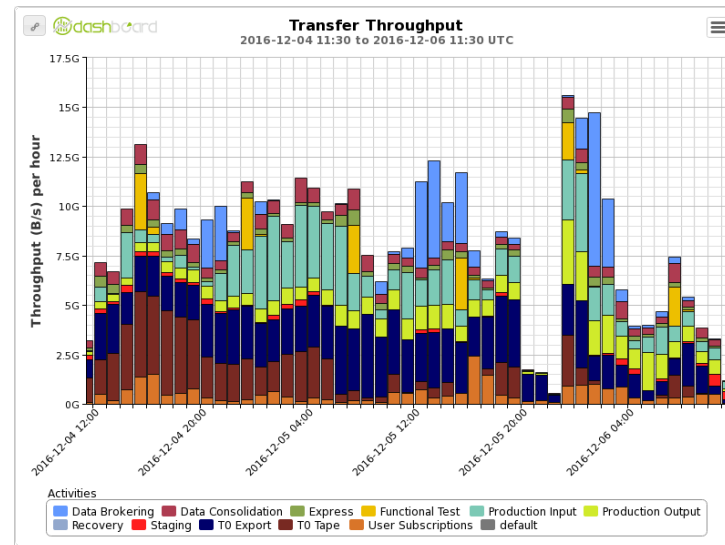


Maximum: 742,681, Minimum: 498,326, Average: 646,928, Current: 642,020

**Analysis:** Quite a high pressure (600-700K pending jobs)

# This week illustrated: data

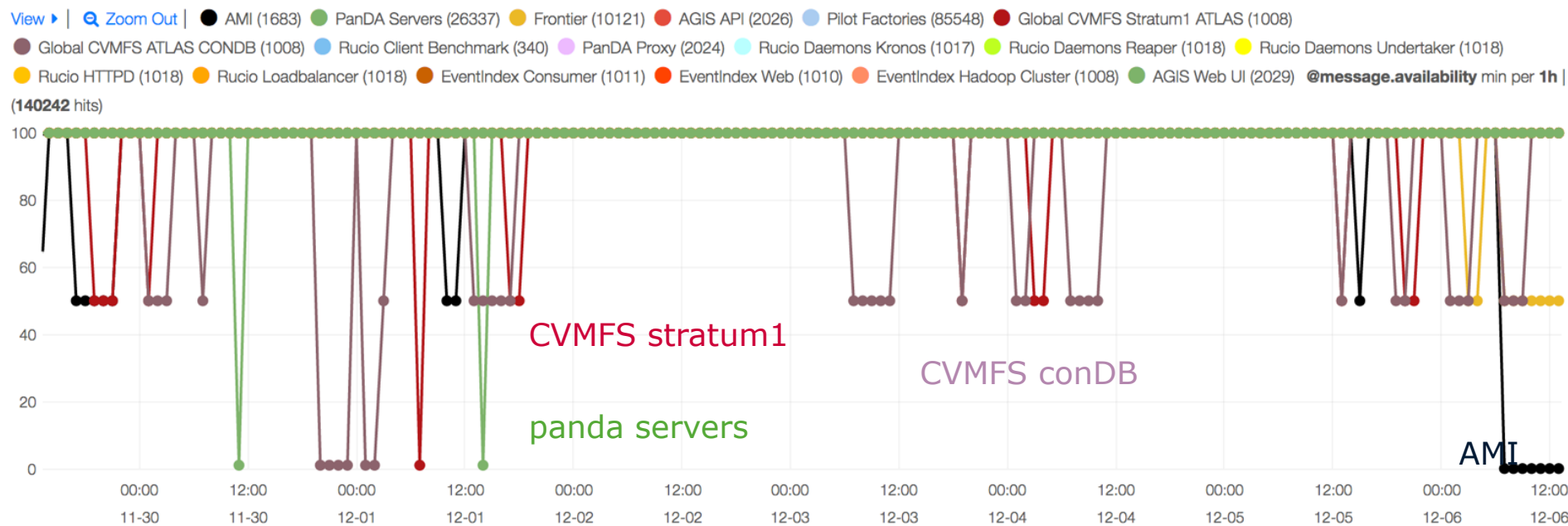
- Usual transfer activities, with a lot transfers from user subscriptions
  - At the beginning of the week higher activity due to recovering for last week rucio problems
  - Hole in transfer yesterday evening for 3 hours: corresponds to the migration to CC7 of machines hosting the conveyor
- No full T1 storage
- Staging at T0 for beam spot reprocessing with timeout errors
  - Understood: is a mismatch between srm lifetime parameters and castor



# Central services

## Services

- CVMFS stratum 1 and CONDB regularly behind the last release
  - discussed at WLCG meeting: same behaviour in ALICE that causes failures recently, monitoring seems ok now thus will be followed up
- Panda servers glitches: PandaLogger\_aipanda141
- AMI: today announced IN2P3-CC downtime for maintenance



# Miscellaneous

## Other issues

- Tasks
  - One misconfigured Powheg task (<http://bigpanda.cern.ch/task/10100792/>) that should use single core but was spawning over all the cores: problem known and fixed that reappeared because jobs was extension of an old dataset

## Sites

- T1 downtimes for maintenance/update
  - SARA: scheduled a downtime for Thursday, Dec 1 8:00-17:00 Firmware updates to fix a network issue over long distance connections.
  - CC-[IN2P3](#): downtime 6th of December for general maintenance, draining starting 48h ahead

## Other

- GGUS cleaning: ~40 GGUS opened for ATLAS (team and other) 4 for ATLAS VO  
→ need some cleaning needed (started this week)
- Instruction in case of problem with GGUS during the end of year holiday period: [contact the KIT site operator \(info in https://goc.egi.eu/portal\)](https://goc.egi.eu/portal).  
[The KIT Emergency telephone number is +49 721 60828383.](#)

# Issues reported by AdCoS shifters (I)

ADCoS: good coverage of senior shifter this week, but no expert shifter

## Summary of issues:

- Central services see previous slide
- Stuck files from T0 to grid to FZK-LCG2\_DATADISK, DESY-HH\_DATADISK CA-MCGILL-CLUMEQ-T2\_DATADISK, SLACXRD\_DATADISK
- Sites: mostly transfer problems
  - SLACXRD DATADISK: TRANSFER globus\_ftp\_client: the server responded with an error 500 [GGUS 125216](#)
  - UKI-SCOTGRID-GLASGOW DATADISK and SCRATCHDISK Deletion Failures with The resource is temporary not available, site is downtime. [GGUS125200](#)
  - TAIWAN-LCG2 DATADISK: TRANSFER TRANSFER an end-of-file was reached [GGUS125146](#)
  - US-NET2\_PHYS-EXOTICS: SOURCE Error reported from srm\_ifce No such file or directory [GGUS125193](#)
  - Deletions at INFN-NAPOLI-ATLAS are failing [GGUS125251](#)
  - CA-MCGILL-CLUMEQ-T2\_DATADISK - overwrite error [GGUS125195](#)
  - All transfers are failing as source and destination [GGUS125253](#)
  - US LUCILLE DATADISK [GGUS125324](#)
  - RAL-LCG2\_MCORE jobs failing with with stage-in errors [GGUS125325](#)
  - GOEGRID Transfer and deletion efficiencies at 100% in the last 24 hrs. [GGUS123999](#)
  - AM-04-YERPHI We had no feedback since ggus ticket was opened. Site is a T3, panda queues are in offline/brokeroff status. [GGUS125015 closed](#)
  - Transfers from DE UNI-FREIBURG DATADISK are failing with « File is unavailable » [GGUS125333](#)
  - Failures at FZK-LCG2\_HIMEM [GGUS125401](#)

# Issues reported by AdCoS shifters II

- Tasks

- Tasks in RequestID:9377 are running with low efficiencies [JIRA4699](#)
- Task 9999432 and 9999635 are failing with ERROR Exceeded the max number of consecutive event failures [JIRA 4700](#)
- GP\_PHYS task 10084500: "RuntimeError: Static content list contains xAOD collections" [JIRA4703](#)
- GP\_PHYS task 10081486: "Segmentation fault" [JIRA4704](#)

- Frontier/Squid

- IN2P3-CC2: the frontier squid is down [GGUS125238](#)
- NDGF-T1 Frontier Squid server down [GGUS125328](#)
- 3 sites, not reported in "Known Problems" are down in Frontier-Squid monitoring: RU-Protvino-IHEP, (from few hours) LRZ-LMU (> 24 hours) ru-Moscow-FIAN-LCG2 (>1month) Elog [59423](#)