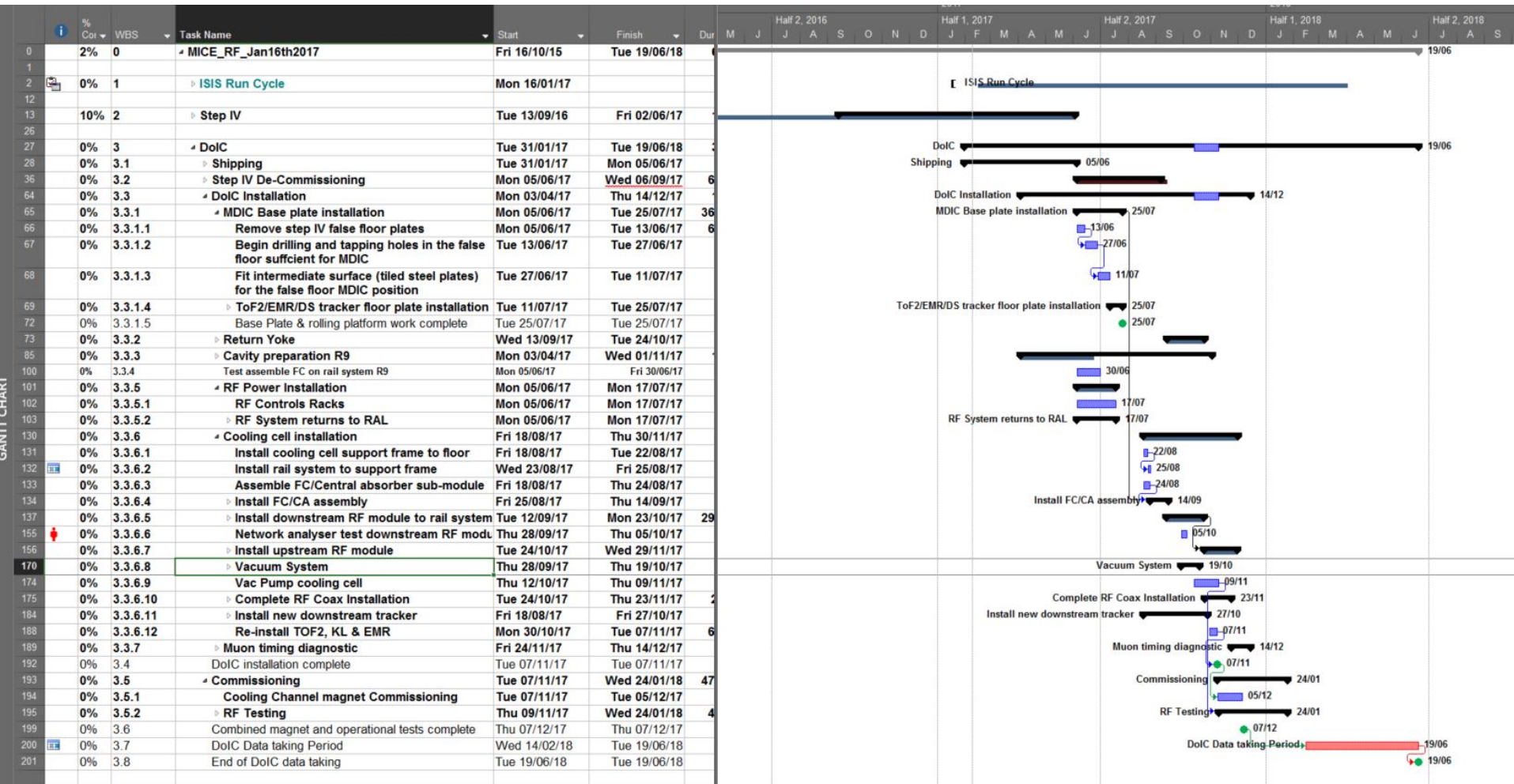




# Upgrade to Demo Schedule

# Overview





# Timeline

Cavities arrive March 2017 - prep in R9

Step IV data - ISIS 2017/01

De-commission Step IV

- SSU stays in place and cold.

- South mezzanine extension/H2 removed

Install RF power.

Install base plate for EMR/Tracker/KL/ToF2

- Trial build cooling cell in R9

Install cooling cell frame & lower PRY.

Install Cooling cell & Upper PRY

Install RF modules and co-axial lines

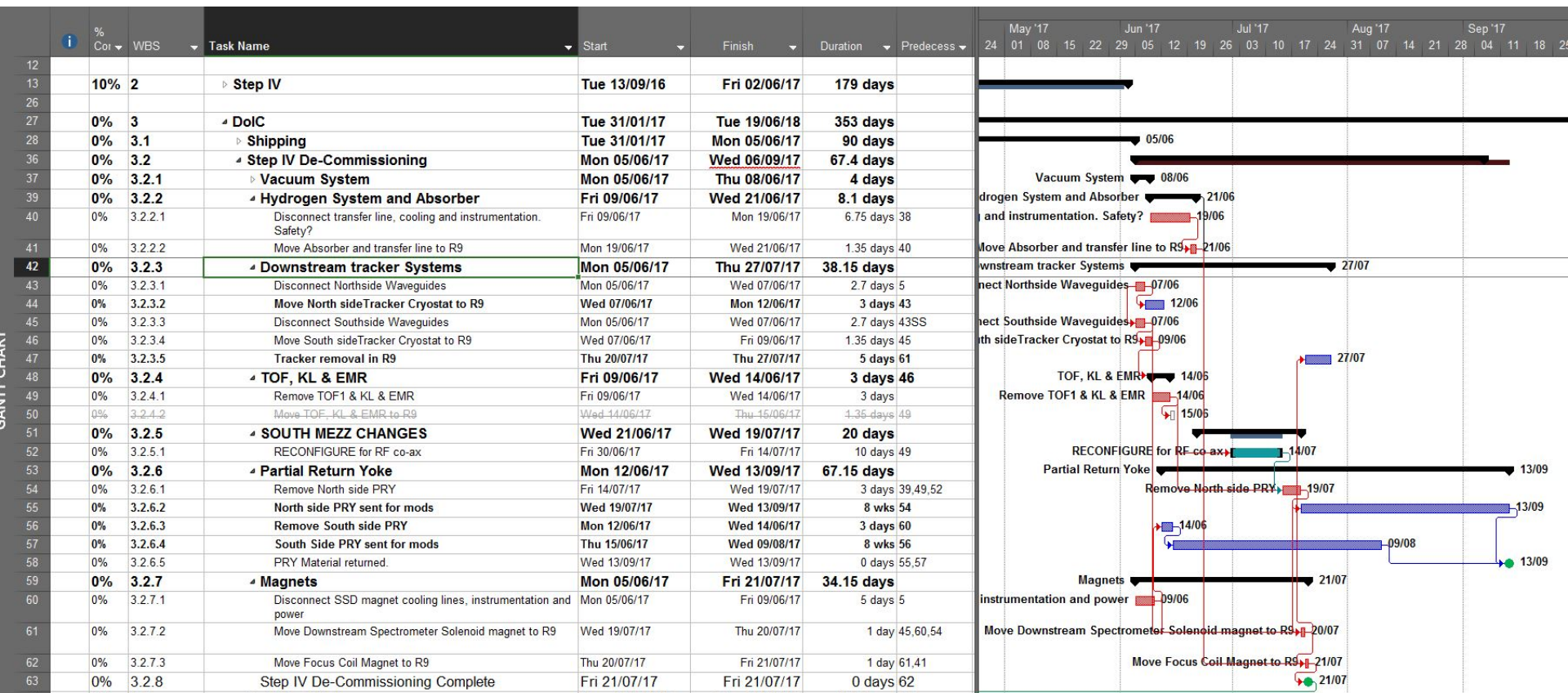
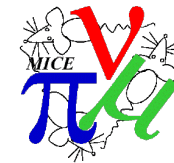
Vacuum

Muon Timing – November/December run.

Commissioning January/February

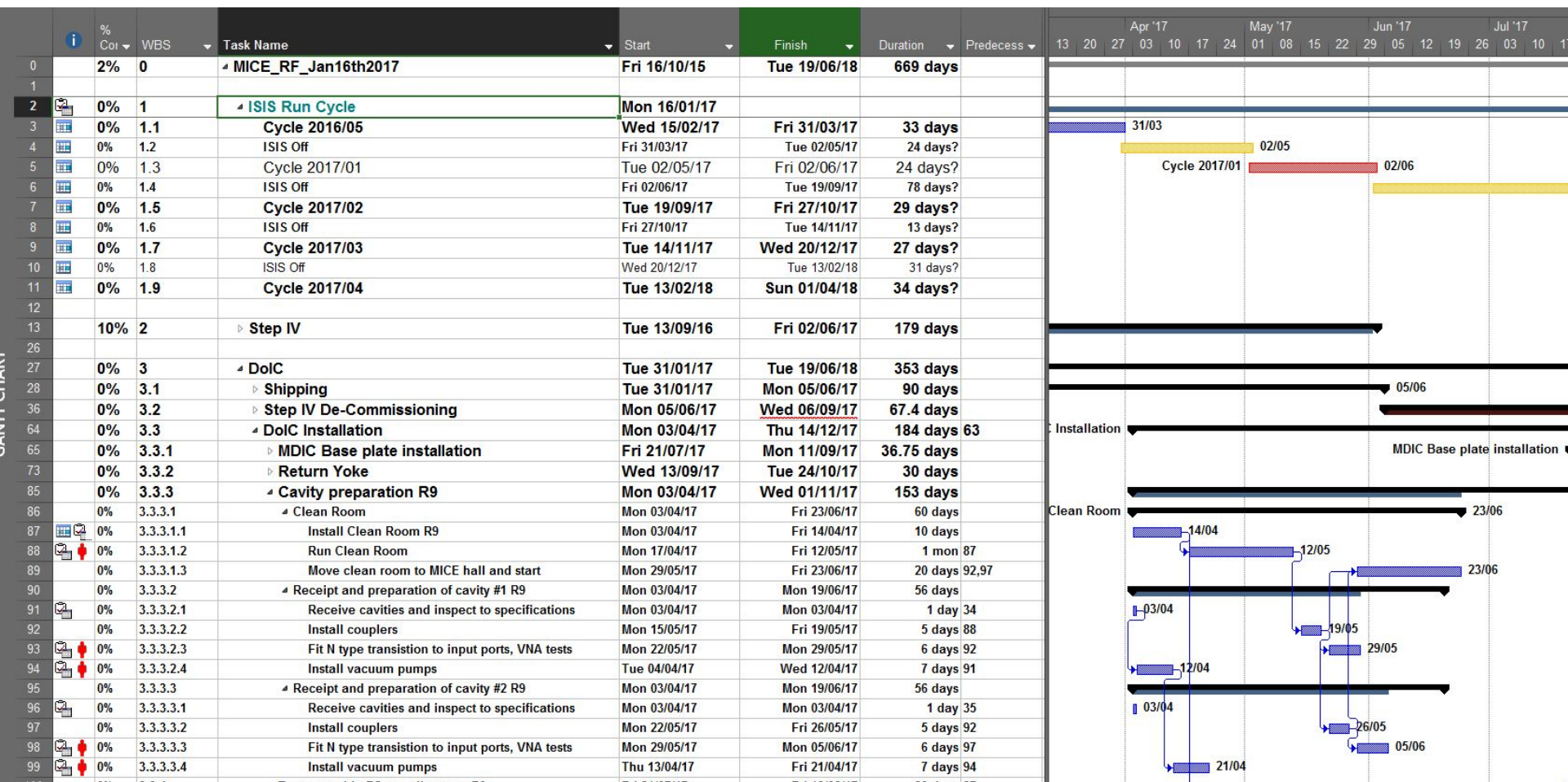
Data - ISIS 2017/04 2018/01

# Step IV decommissioning



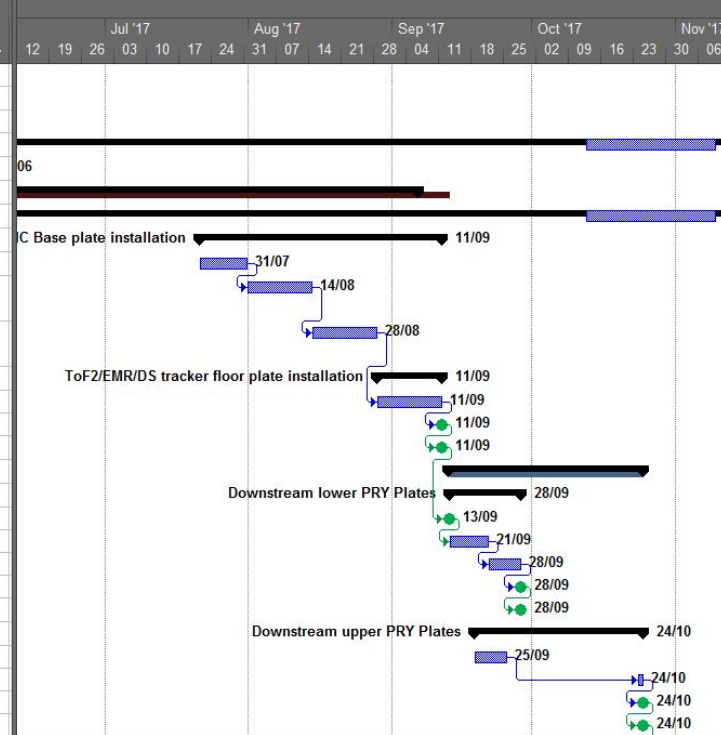


# Cavities



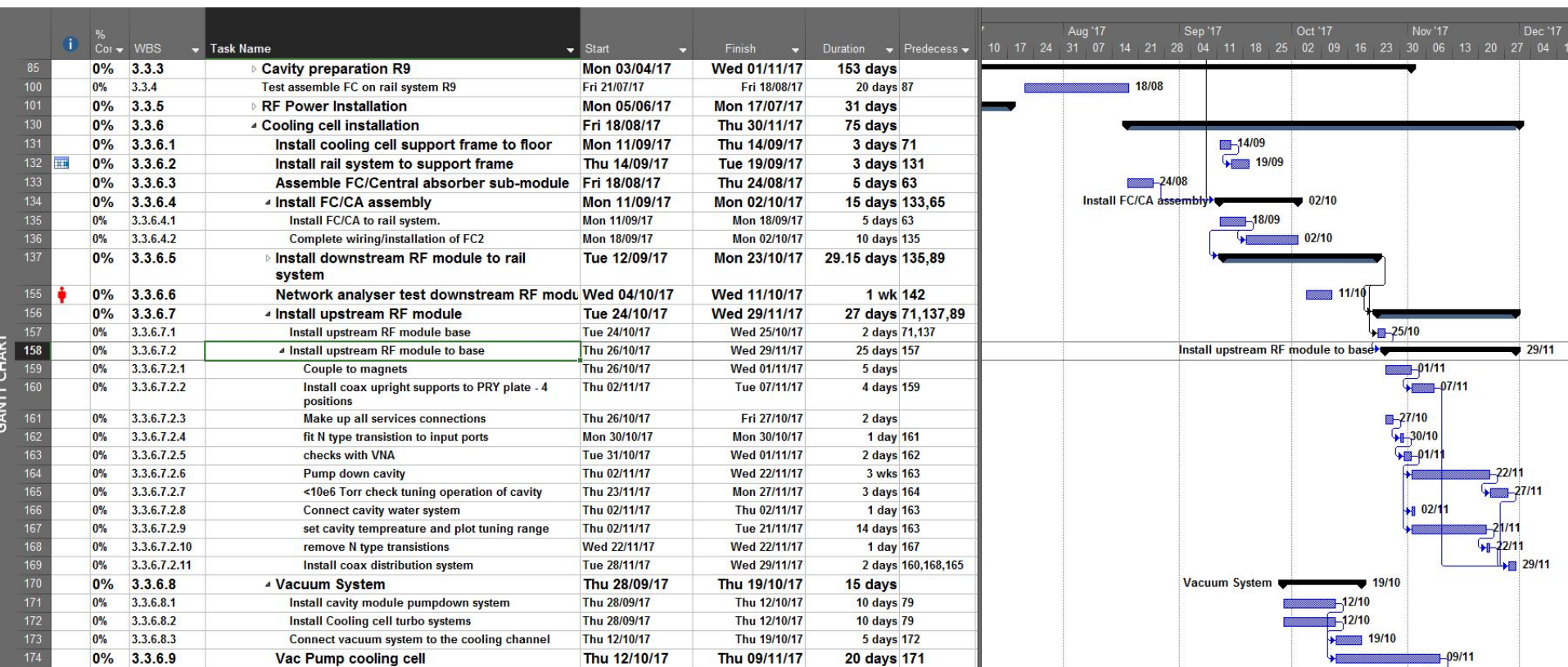
# Base Plates

	i	% Coi	WBS	Task Name	Start	Finish	Duration	Predecess	12	19	26	03	10	17	24	31	07	14	21	28	04	11	18	25	02	09	16	23	30	06
12																														
13		10%	2	▸ Step IV	Tue 13/09/16	Fri 02/06/17	179 days																							
26		0%	3	▸ DoIC	Tue 31/01/17	Tue 19/06/18	353 days																							
28		0%	3.1	▸ Shipping	Tue 31/01/17	Mon 05/06/17	90 days																							
36		0%	3.2	▸ Step IV De-Commissioning	Mon 05/06/17	Wed 06/09/17	67.4 days																							
64		0%	3.3	▸ DoIC Installation	Mon 03/04/17	Thu 14/12/17	184 days	63																						
65		0%	3.3.1	▸ MDIC Base plate installation	Fri 21/07/17	Mon 11/09/17	36.75 days																							
66		0%	3.3.1.1	Remove step IV false floor plates	Fri 21/07/17	Mon 31/07/17	6.75 days	63																						
67		0%	3.3.1.2	Begin drilling and tapping holes in the false floor sufficient for MDIC	Mon 31/07/17	Mon 14/08/17	10 days	66																						
68		0%	3.3.1.3	Fit intermediate surface (tiled steel plates) for the false floor MDIC position	Mon 14/08/17	Mon 28/08/17	10 days	67																						
69		0%	3.3.1.4	▸ ToF2/EMR/DS tracker floor plate installation	Mon 28/08/17	Mon 11/09/17	10 days																							
70		0%	3.3.1.4.1	Install ToF2/EMR/Dtracker base plate	Mon 28/08/17	Mon 11/09/17	10 days	68																						
71		0%	3.3.1.4.2	ToF2/EMR/Dtracker base plate installation complete	Mon 11/09/17	Mon 11/09/17	0 days	70																						
72		0%	3.3.1.5	Base Plate & rolling platform work complete	Mon 11/09/17	Mon 11/09/17	0 days	71																						
73		0%	3.3.2	▸ Return Yoke	Wed 13/09/17	Tue 24/10/17	30 days																							
74		0%	3.3.2.1	▸ Downstream lower PRY Plates	Wed 13/09/17	Thu 28/09/17	11.75 days	57																						
75		0%	3.3.2.1.1	Installation of PRY starts	Wed 13/09/17	Wed 13/09/17	0 days	72,58																						
76		0%	3.3.2.1.2	Fit downstream lower side yoke plates	Wed 13/09/17	Thu 21/09/17	6.75 days	75																						
77		0%	3.3.2.1.3	Install lower PRY end plate to Base plate	Thu 21/09/17	Thu 28/09/17	5 days	76																						
78		0%	3.3.2.1.4	Downstream lower return yoke installation complete	Thu 28/09/17	Thu 28/09/17	0 days	77																						
79		0%	3.3.2.2	Lower PRY Installation complete	Thu 28/09/17	Thu 28/09/17	0 days	78																						
80		0%	3.3.2.3	▸ Downstream upper PRY Plates	Mon 18/09/17	Tue 24/10/17	26.1 days?																							
81		0%	3.3.2.3.1	Fit downstream upper side yoke plates	Mon 18/09/17	Mon 25/09/17	5 days	135																						
82		0%	3.3.2.3.2	Install upper PRY end plate.	Tue 24/10/17	Tue 24/10/17	1 day?	81,134,137																						
83		0%	3.3.2.3.3	Downstream upper return yoke installation complete	Tue 24/10/17	Tue 24/10/17	0 days	82																						
84		0%	3.3.2.4	Upper PRY Installation complete	Tue 24/10/17	Tue 24/10/17	0 days	83																						





# Cooling Cell



# Commissioning

