

OPN Interactions with WLCG

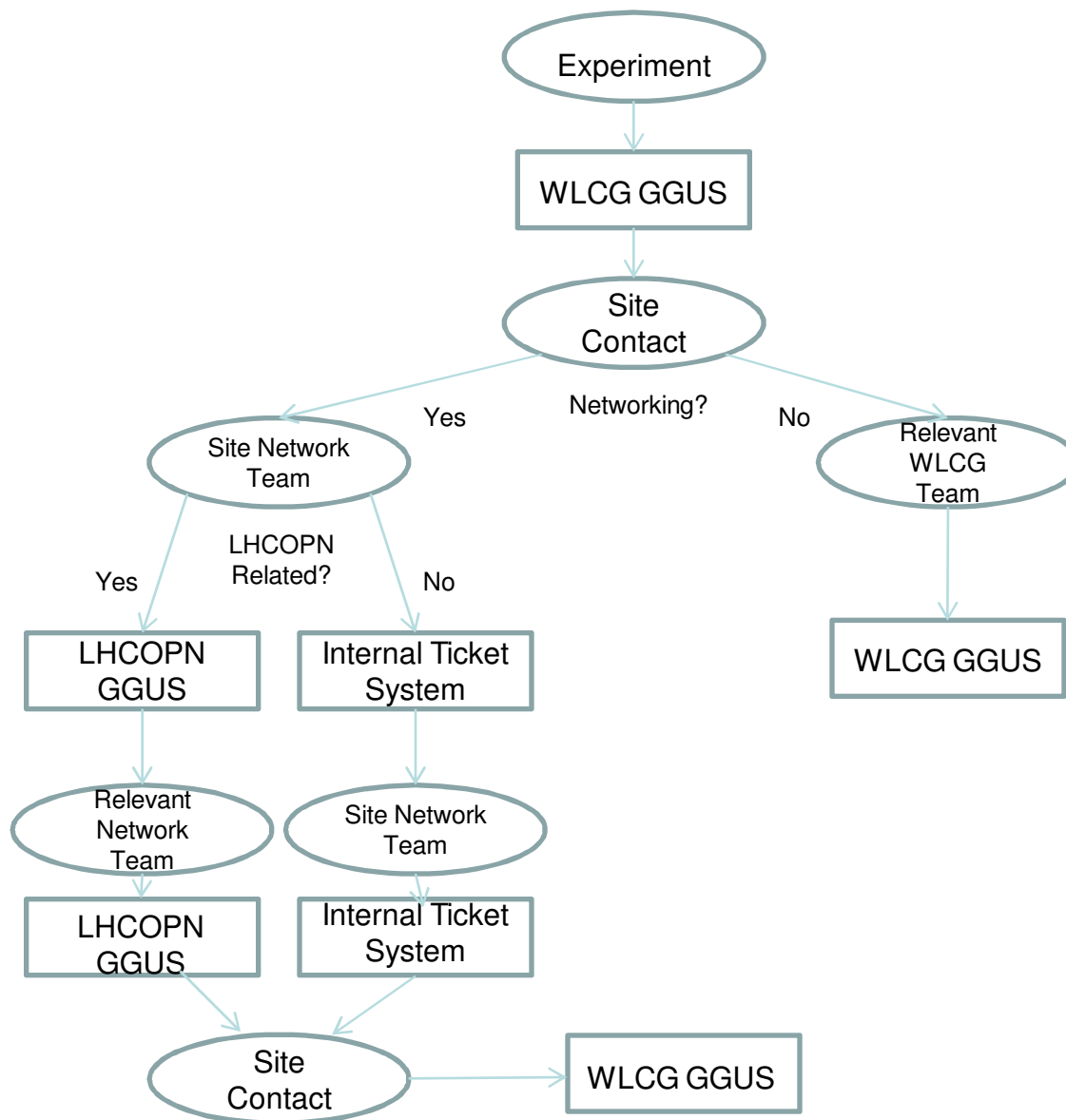
Wayne Salter – 31st August 2009

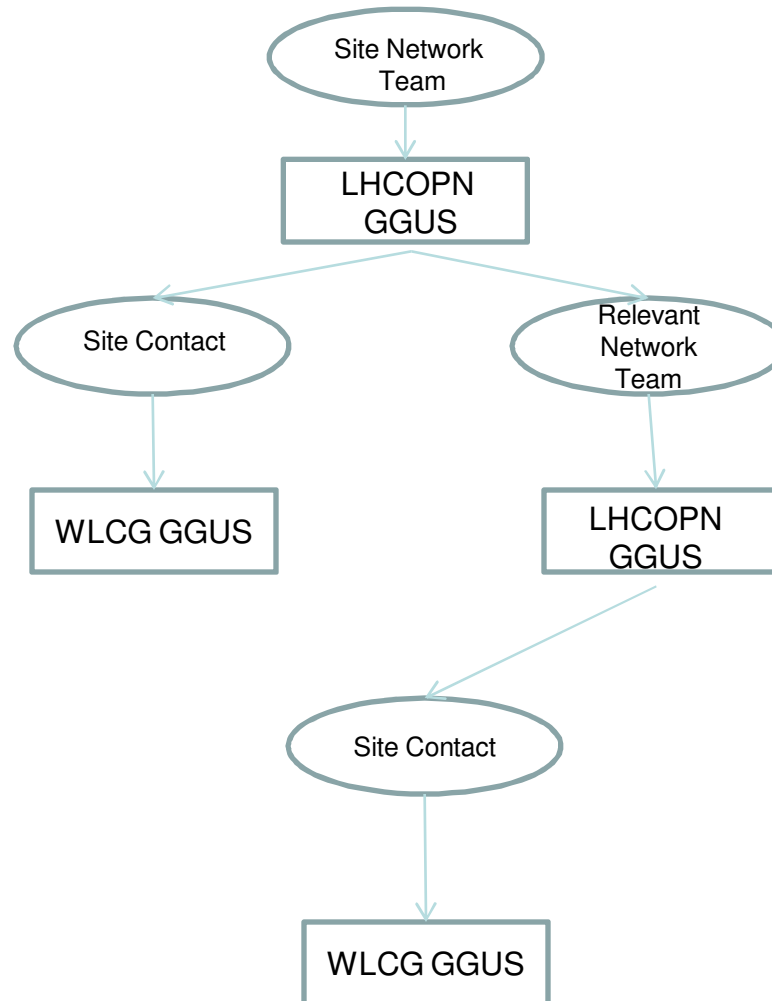
- LHCOPN a sub-project of GDB
- LHCOPN officially member of WLCG GDB and MB
- Occasional participation of WLCG at LHCOPN meetings
- Rare participation of LHCOPN at WLCG meetings
- Result: Two communities with little interaction and unhappiness on the side of the WLCG

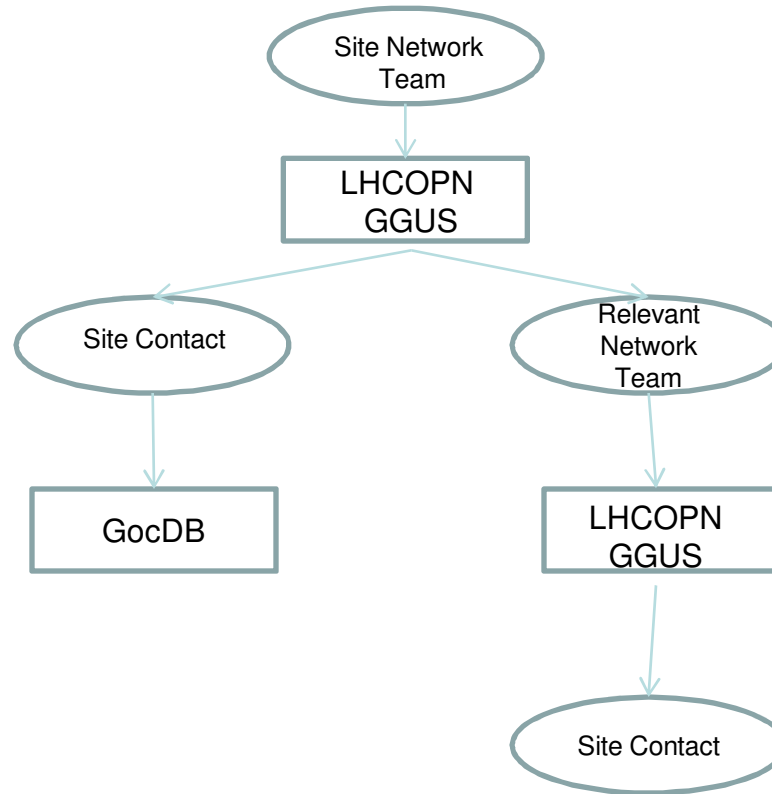
- Operations model developed within the LHCOPN Operations WG
- Assumes the use of GGUS (same tool as used by WLCG)
- Assumes an interface function between LHCOPN and WLCG communities
 - ‘GRID Data Contact’ in LHCOPN terminology
 - WLCG community does not like this term
- No other defined interaction with WLCG foreseen

- LHCOPN is there to serve WLCG
- LHCOPN should be integral part of WLCG operations and use same tools
- All LHCOPN planned maintenances and incidents (affecting WLCG operations) should be reported to WLCG
- LHCOPN should be represented at the daily operations meetings
- LHCOPN should be represented at all GDB and MB meetings

- Term 'GRID Data Contact' replaced by 'Site Contact'
- When WLCG and LHCOPN GGUS tickets both exist for an incident then they should be linked
- A filter option to display only LHCOPN GGUS tickets affecting WLCG Operations
- The following slides show a proposal for LHCOPN/WLCG operational interaction
 - Need to understand whether this fits all sites
 - May need modifying







- LHCOPN to present the current status to the GDB (twice a year)
- LHCOPN to be represented at the MB but only on request
- LHCOPN to be represented at the GDB for any issues related to the OPN
- LHCOPN to be represented at the STEP09 'post mortem' and at the WLCG Workshops as appropriate
- LHCOPN to be represented at the daily operations meetings when there is an OPN issue (incident or maintenance)
- WLCG representative to attend LHCOPN meetings from time to time to present feedback from the WLCG on LHCOPN operations as well as to provide input on any new or evolving requirements for the LHCOPN.

- Discussions on-going to understand how best to integrate LHCOPN operations with WLCG
- Role of 'Site Contact' is crucial
 - Does this exist at all sites?
 - Is the role well understood at all sites?
- Linking of LHCOPN and WLCG GGUS tickets is good first step
- Attendance at WLCG Daily Operations meetings necessary for sites
- Post-Mortem reports should be provided by the sites for major incidents
- This model is a first try and may well need modifying but we need to gain experience with it first