

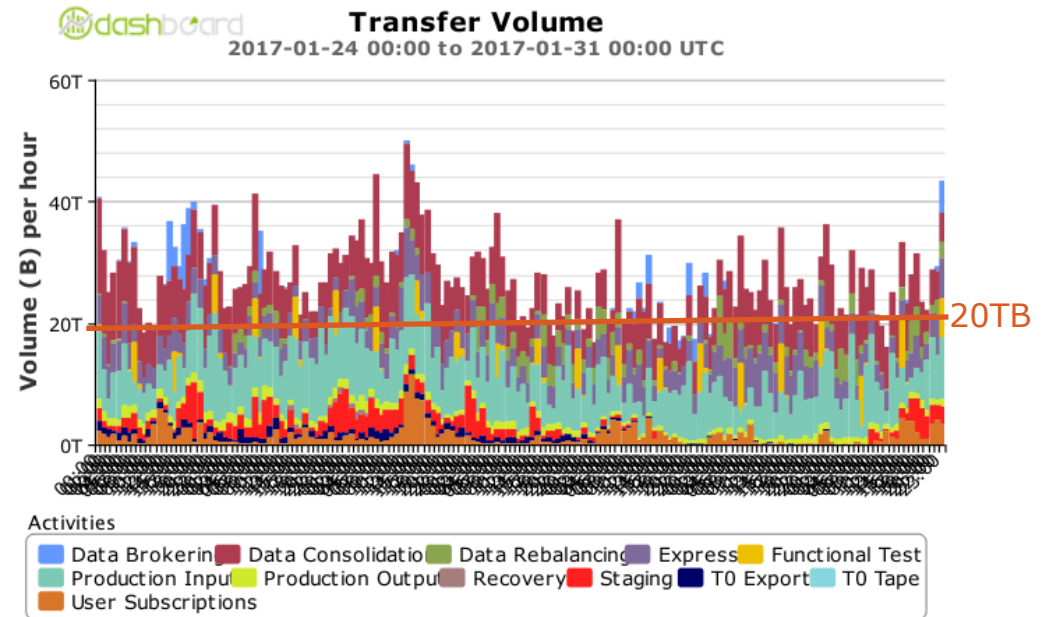
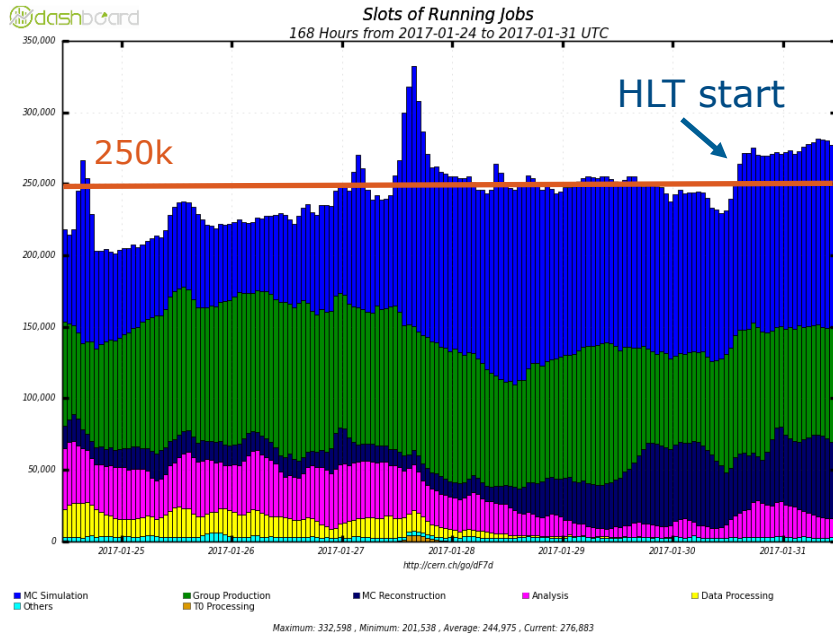
CRC/ADCoS Report

Week: January 24-31 2017

Sabine Crépe-Renaudin (CRC)

ADC Weekly Meeting

This week summary



- Production
 - Mainly derivation
 - MC Simulation and reconstruction
 - Reprocessing tests with release 21
 - Overlay tests
- Analysis: very low level during the weekend

- Data
 - Usual transfer activities: mostly production input and data consolidation, data staging and some user activities

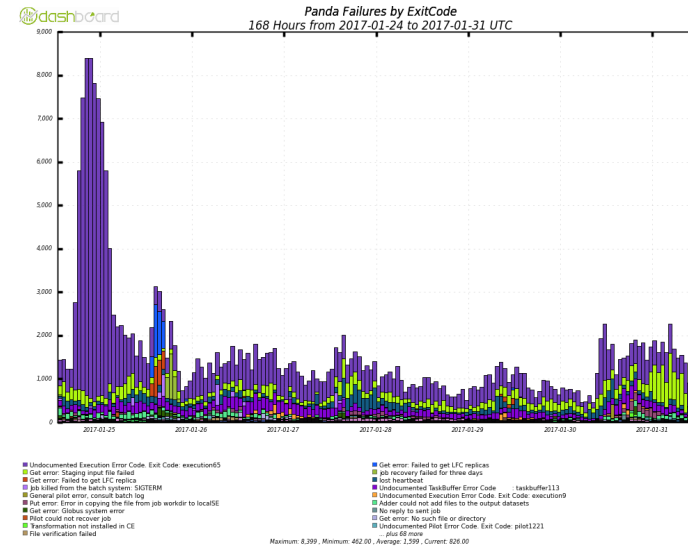
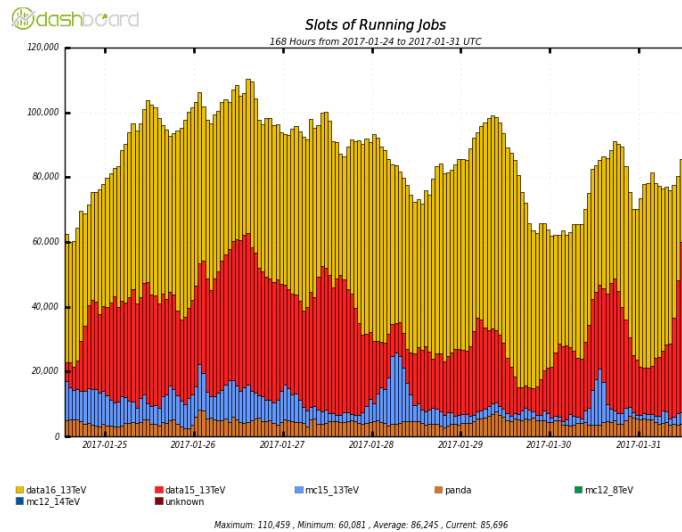
→ Whole system running smoothly

This week illustrated: jobs

Derivation:

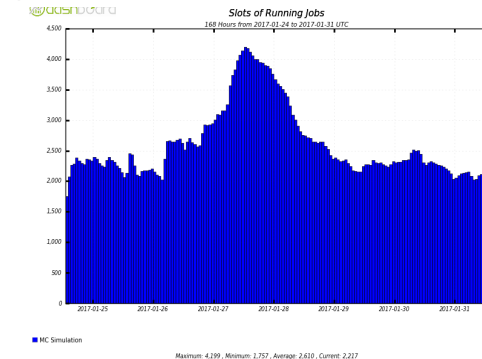
- Using in average 43% of the resources (wall clock)
- Peak of errors due to merging stage: understood and corrected in new ptag but errors due to tasks sent to production around Christmas with old ptag.
- Prevent to run new jobs at the beginning of the week

data16
data15
mc15
merging



Overlay test:

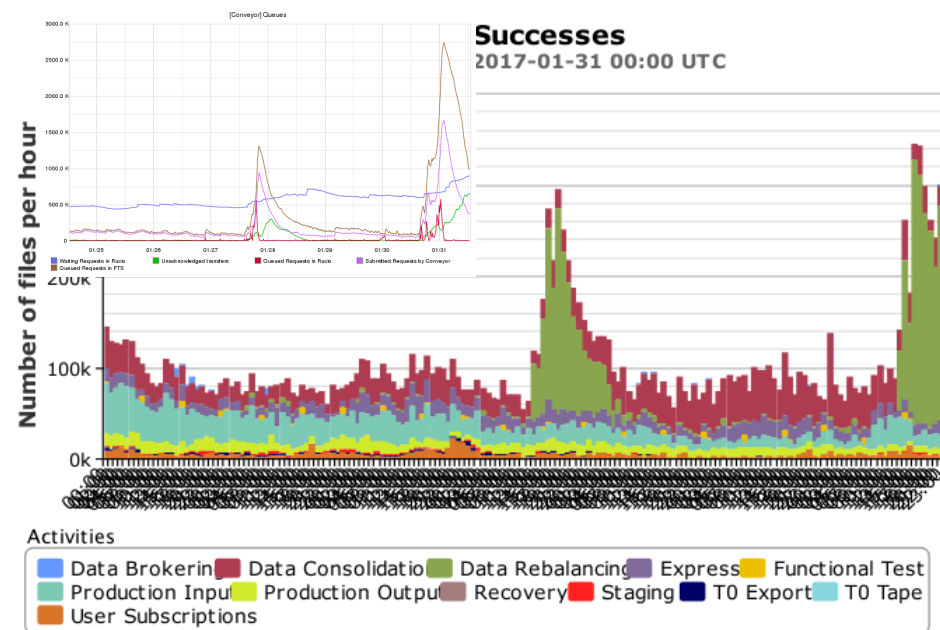
- Using around 2-3k limited in order not to stress too much database access and frontier servers



This week illustrated: data

Related to ATLAS central/CERN

- Sustained activity in rucio (waiting request at 600k level)
- **Data-rebalancing:** big spike of requests (sites decommissioning) on Friday evening absorbed in 12h, and other one yesterday;
- **Untouched data:** ESD and DAOD older than 6 months and not touched were deleted



Related to sites

- **T2 datadisks full:** being cleaned up or rebalanced : some stay in the list because storage will be decommissioned (RO-14) or because space is not released (DESY-HH, UKI-SOUTHGRID-RALPP) => sites contacted by GGUS in that case
- **Deletion errors:** after CERN server moved to CC7, sites were impacted by deletion errors due to the fact that not all SSL ciphers needed from CC7 are in their apache (zlcgdm-dav.conf) configuration file when using http ([WebDav](#)). GGUS have been sent to sites badly configured with the needed correction and ADCoS shifters informed.
- **Castor:** 300 files were lost in Castor and some of them are raw data that were not exported because of the policy at that time (data10_calib, data11_2P76...). Data prep answered it's not worth to recover these files.

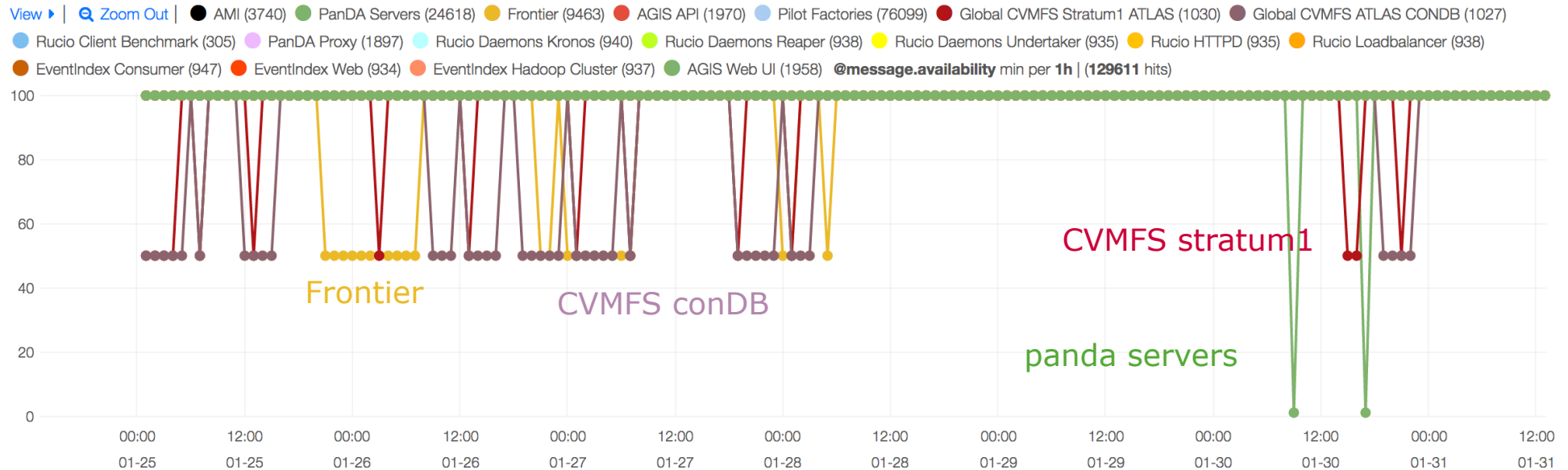
Central services

Monitoring

- **Kibana** didn't return info twice in the week
- **CVMFS stratum 1** and **CONDB** regularly orange in monitoring

Frontier

- **CERN Frontier servers**
 - Issues beginning of the week and on Saturday (overload and times out) under study
 - Frontier services needed to be restarted at [IN2P3-CC](#) on Tuesday: atlasfrontier3-ai.cern.ch and atlasfrontier4-ai.cern.ch, because CERN nodes were configured with IPV6 by mistake and didn't accept new connections causing client to failover to [IN2P3-CC](#) => solved



Miscellaneous

AFS

- ATLAS has some accidental afs use from grid jobs. If afs is not mounted then the libs are found elsewhere (in cvmfs). → There is a possibility that jobs hang the “no afs” day at CERN (15th of February). Test will be done with volunteer sites.

Hammercloud

- Some tests were failing because old files of PFT and AFT datasets were cleaned up => → new input for rel17 redistributed; will need to switch to new release.

Users

- Users using more than 1/2 PB or 1/2 billion of seconds per day are contacted (around 1 or 2 such user per week).

Livepage

- Nuclei list is not correct => will be corrected

New version of AMItag interface ready

- will be tested by production system

Issues reported by DAST

Rucio

- Several users complained that rucio was slow on Tuesday late afternoon: only correlation found is that one rucio server was down

Sites with persistent transfer problems

- In that case users complain not to be able to get their data => DAST suggestion to have Hammercloud like tests to blacklist sites with persistent transfer problems
 - in that case site should declare an unscheduled downtime, if not done, DAST can ask DDM to blacklist the site by hand. ADC will work on a solution in the meantime.

Note

- For new DAST shifters: don't hesitate to contact CRC by mail in case of ADC related problem

Issues reported by AdCoS shifters (I)

ADCoS: very good coverage of senior shifters this week (no expert shifter)

Summary of issues:

- Central services see previous slide
- Sites: mainly squid problems and srm/transfer or deletion errors

29 Tickets found

Ticket-ID	Type	VO	Site	Priority	Resp. Unit	Status	Last Update	Subject
126265	Team	atlas	WT2	less urgent	OSG(Prod)	solved	2017-01-31	WT2: squid down
126264	Team	atlas	CERN-PROD	very urgent	ROC_CERN	assigned	2017-01-30	ATLAS Service Monitoring shows only ...
126237	Team	atlas	BEIJING-LCG2	urgent	NGI_CHINA	assigned	2017-01-29	BEIJING-LCG2 squid is down
126233	Team	atlas	WT2	urgent	OSG(Prod)	solved	2017-01-30	SLACXRD deletion errors: service not ...
126232	Team	atlas	INFN-MILANO-ATLASC	urgent	NGI_IT	assigned	2017-01-30	INFN-MILANO-ATLASC srm failure
126231	Team	atlas	RO-07-NIPNE	urgent	NGI_RO	in progress	2017-01-28	RO-07-NIPNE srm failure
126230	Team	atlas	UKI-NORTHGRID-LANCS-HEP	urgent	NGI_UK	solved	2017-01-29	UKI-NORTHGRID-LANCS-HEP deletion errors ...
126229	Team	atlas	IL-TAU-HEP	less urgent	NGI_IL	solved	2017-01-30	NL IL-TAU-HEP: low Transfer efficiency ...
126227	Team	atlas	INFN-LECCE	urgent	NGI_IT	solved	2017-01-30	INFN-LECCE: squid is down
126226	Team	atlas	UKI-NORTHGRID-LIV-HEP	urgent	NGI_UK	solved	2017-01-29	UK UKI-NORTHGRID-LIV-HEP: deletion ...
126218	Team	atlas	GR-12-TEIKAV	less urgent	NGI_GRNET	on hold	2017-01-30	GR-12-TEIKAV: squid is down
126216	Team	atlas	BU_ATLAS_Tier2	urgent	OSG(Prod)	solved	2017-01-30	NET2: source transfer errors with error ...
126207	Team	atlas	CERN-PROD	urgent	ROC_CERN	solved	2017-01-30	CERN-PROD_SCRATCHDISK: deletion errors ...
126204	Team	atlas	IEPSAS-Kosice	urgent	NGI_SK	solved	2017-01-27	IEPSAS-KOSICE: source file transfer ...
126203	Team	atlas	UKI-LT2-QMUL	urgent	NGI_UK	solved	2017-01-29	UKI-LT2-QMUL: squid service shown as ...
126176	Team	atlas	GR-12-TEIKAV	less urgent	NGI_GRNET	assigned	2017-01-30	GR-12-TEIKAV restricted list of ciphers ...
126175	Team	atlas	ZA-UJ	less urgent	AfricaArabia	solved	2017-01-31	ZA-UJ restricted list of ciphers for ...
126174	Team	atlas	UKI-SCOTGRID-ECDF	less urgent	NGI_UK	solved	2017-01-31	UKI-SCOTGRID-ECDF restricted list of ...
126173	Team	atlas	UKI-LT2-RHUL	less urgent	NGI_UK	solved	2017-01-26	UKI-LT2-RHUL restricted list of ciphers ...
126172	Team	atlas	RO-14-ITIM	less urgent	NGI_RO	solved	2017-01-29	RO-14-ITIM restricted list of ciphers ...
126171	Team	atlas	RO-07-NIPNE	less urgent	NGI_RO	solved	2017-01-29	RO-07-NIPNE restricted list of ciphers ...
126170	Team	atlas	GRIF	urgent	NGI_FRANCE	in progress	2017-01-26	GRIF restricted list of ciphers for ...
126169	Team	atlas	FMPHI-UNIBA	less urgent	NGI_SK	in progress	2017-01-25	FMPHI-UNIBA restricted list of ciphers ...
126168	Team	atlas	BEIJING-LCG2	less urgent	NGI_CHINA	in progress	2017-01-26	BEIJING-LCG2 restricted list of ciphers ...
126133	Team	atlas	INFN-ROMA1	less urgent	NGI_IT	solved	2017-01-24	INFN-ROMA1: DESTINATION OVERWRITE ...
126126	Team	atlas	IL-TAU-HEP	less urgent	NGI_IL	solved	2017-01-25	IL-TAU-HEP: Squid is down and Transfer ...
126125	Team	atlas	BNL-ATLAS	very urgent	OSG(Prod)	solved	2017-01-25	US cloud: transfers failure to US sites ...
126121	Team	atlas	INFN-NAPOLI-ATLAS	urgent	NGI_IT	solved	2017-01-25	INFN-NAPOLI-RECAS and ...
126104	Team	atlas	IFIC-LCG2	less urgent	NGI_IBERGRID	verified	2017-01-25	Transfers to ES IFIC-LCG2 are failing ...

Issues reported by AdCoS shifters II

- Tasks related (only new JIRA tickets created this week shown, much more updated)

ADCSUPPORT-4754

Task 10548365 (mc15_13TeV 20.7.8.7 reco) fails with "Argument list too long"

ADCSUPPORT-4753

Task 10071564 fails with "Data identifier not found"

ADCSUPPORT-4752

data_evind AP_SOFT eventindex task 10547259 100% of jobs fail:"Segmentati...

ADCSUPPORT-4751

mc15_13TeV 20.7.7.9.2 AP_EXOT recon task 10121655 running with low effici...