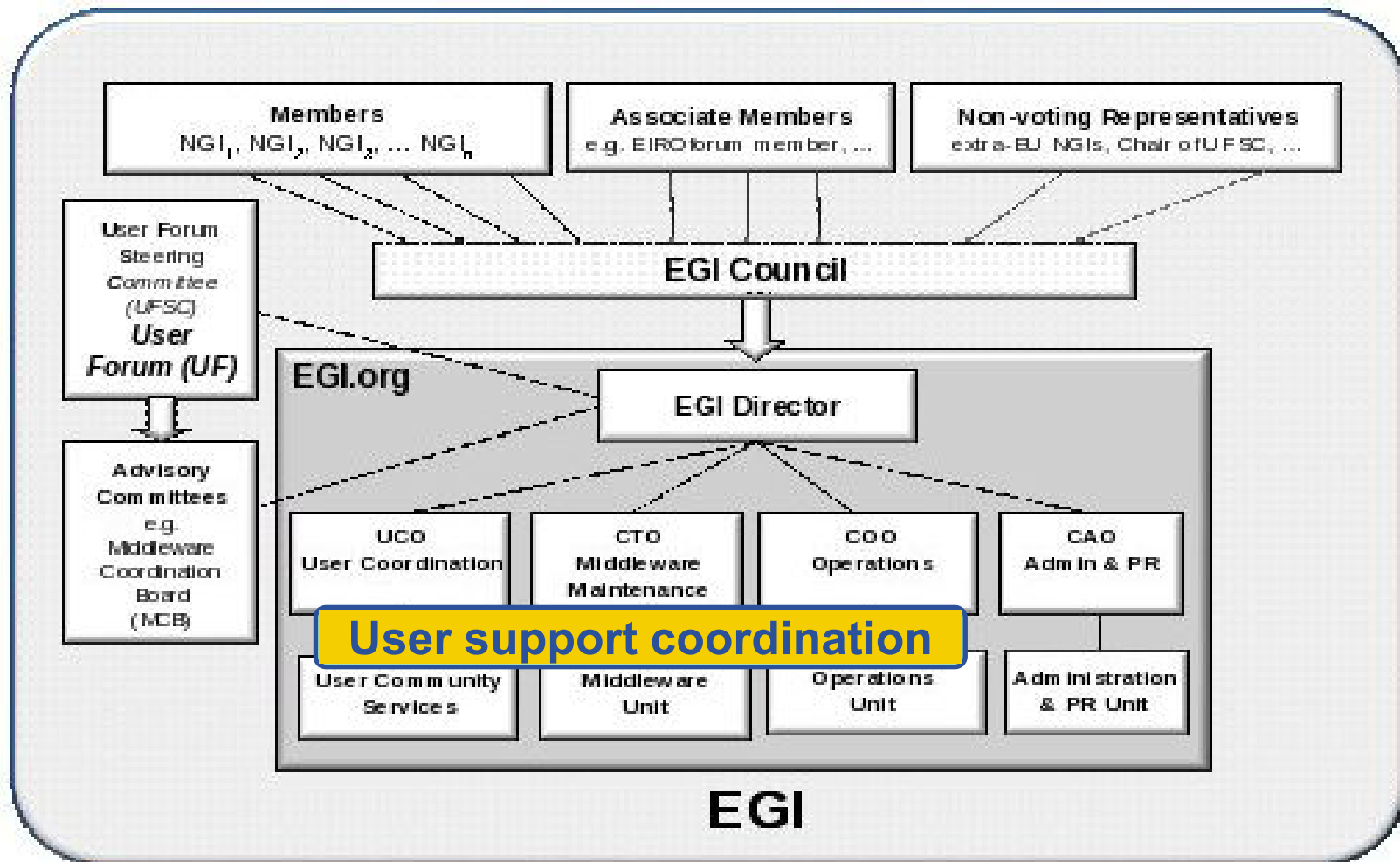
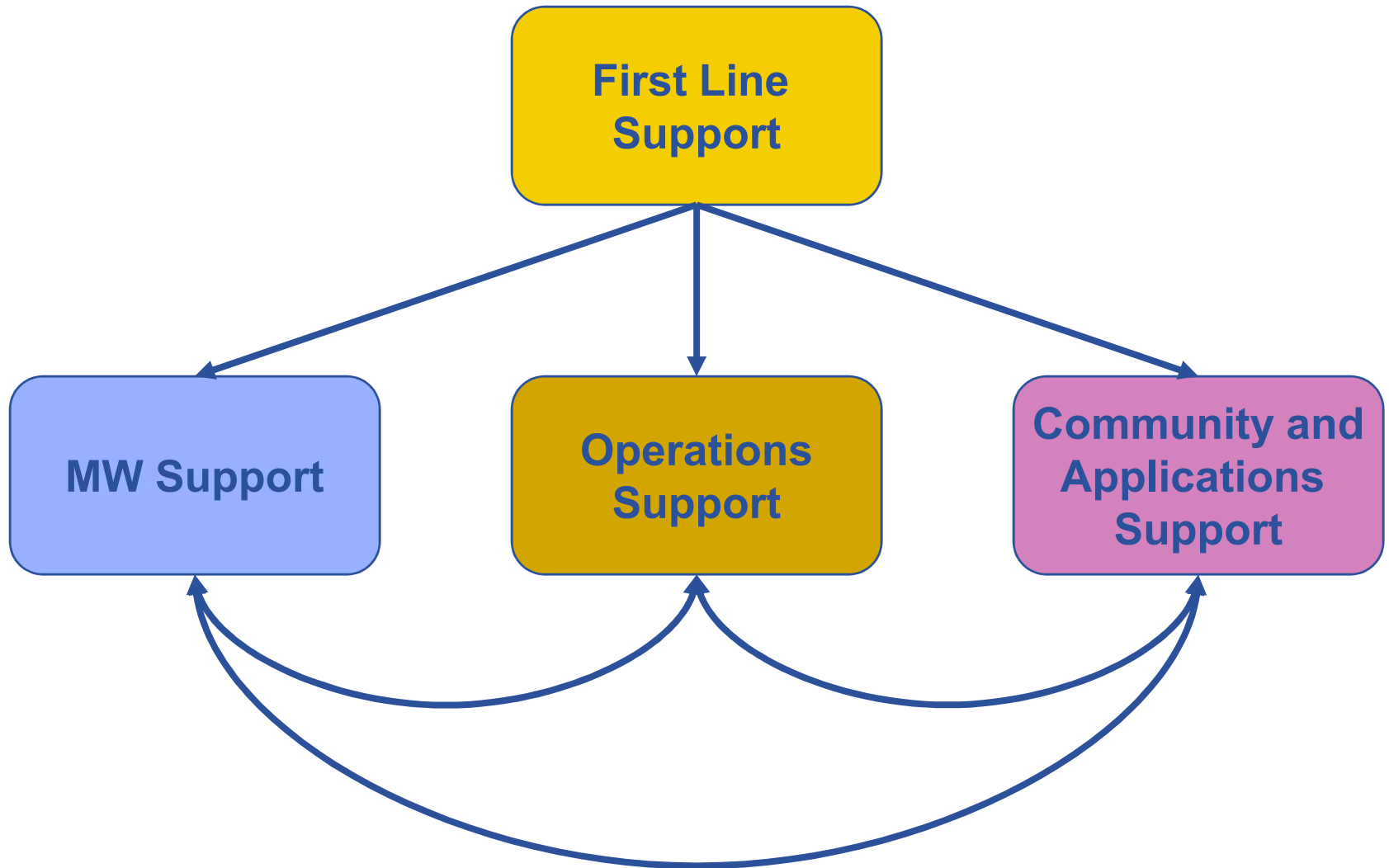


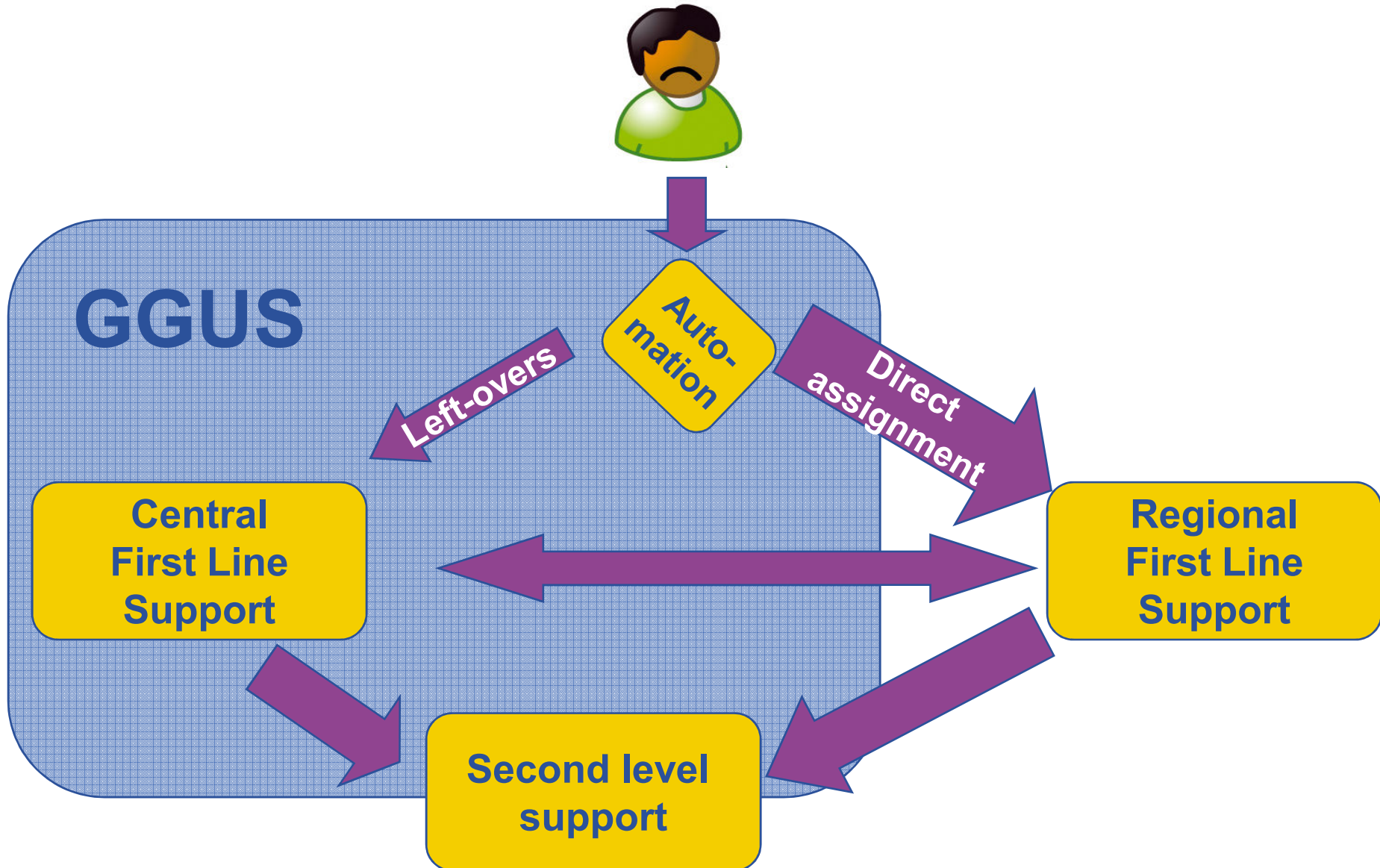
Central Coordination and Central Tools for distributed Support

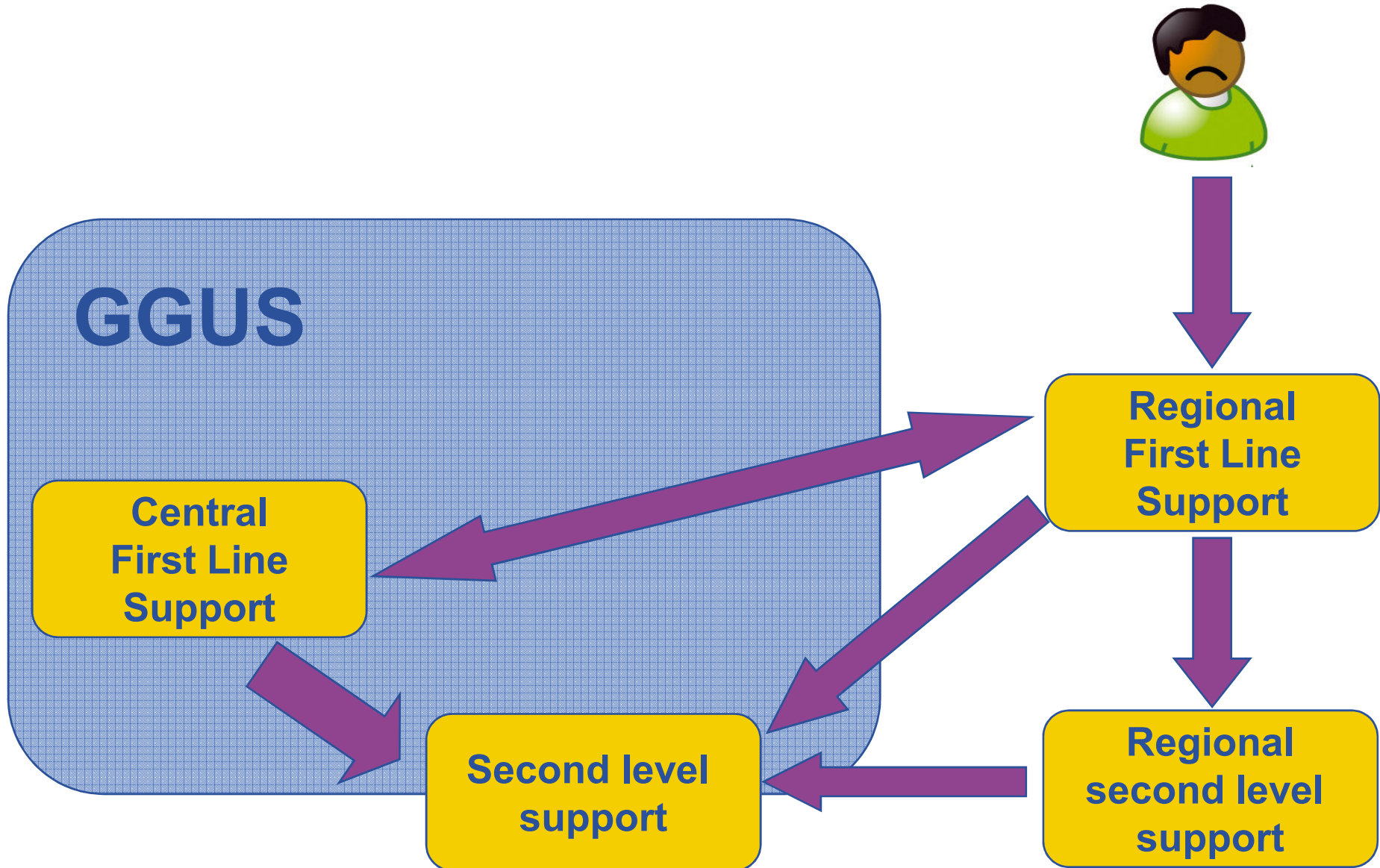
T. Antoni | KIT

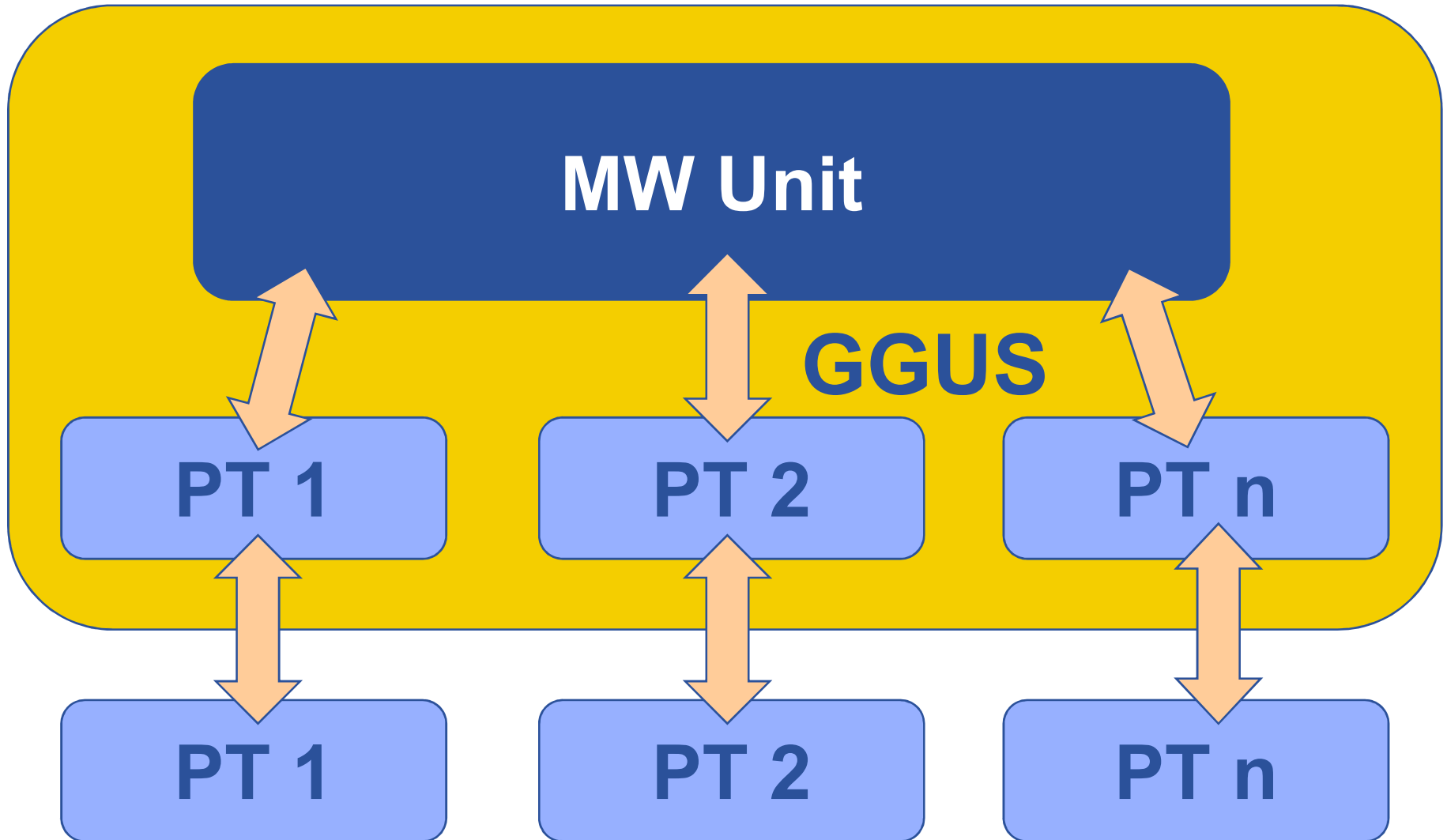
SSC Workshop | 01/07/09 | Orsay

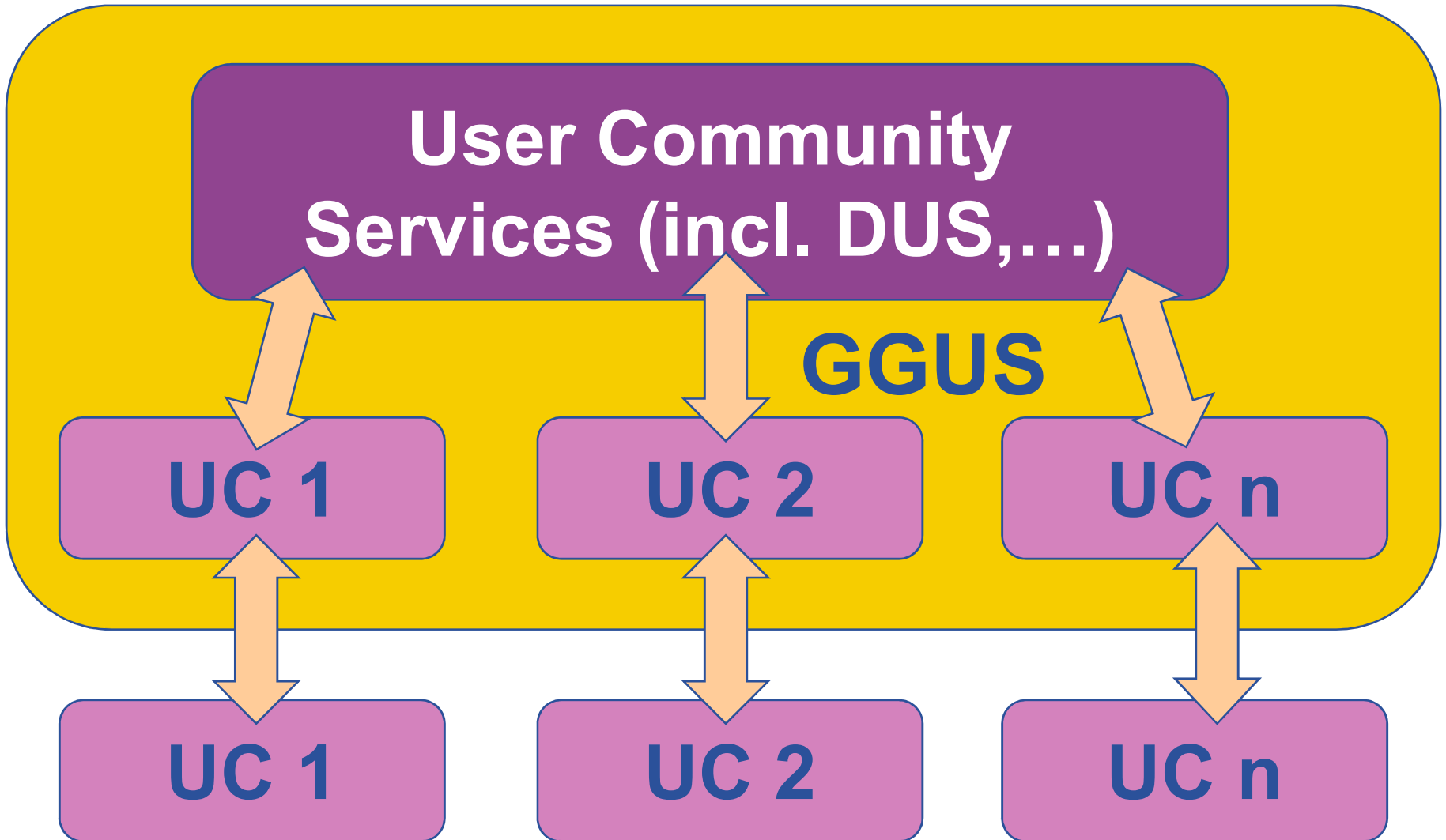












- **Proper coordination very important (OU, MU, UCS)**
- **Communication channels have to be well defined**
- **Need for central tools**
- **Clear interfaces have to be defined**
- **Make sure support is properly staffed from the beginning**
- **Counterbalance the increased autonomy and diversity of the NGIs**