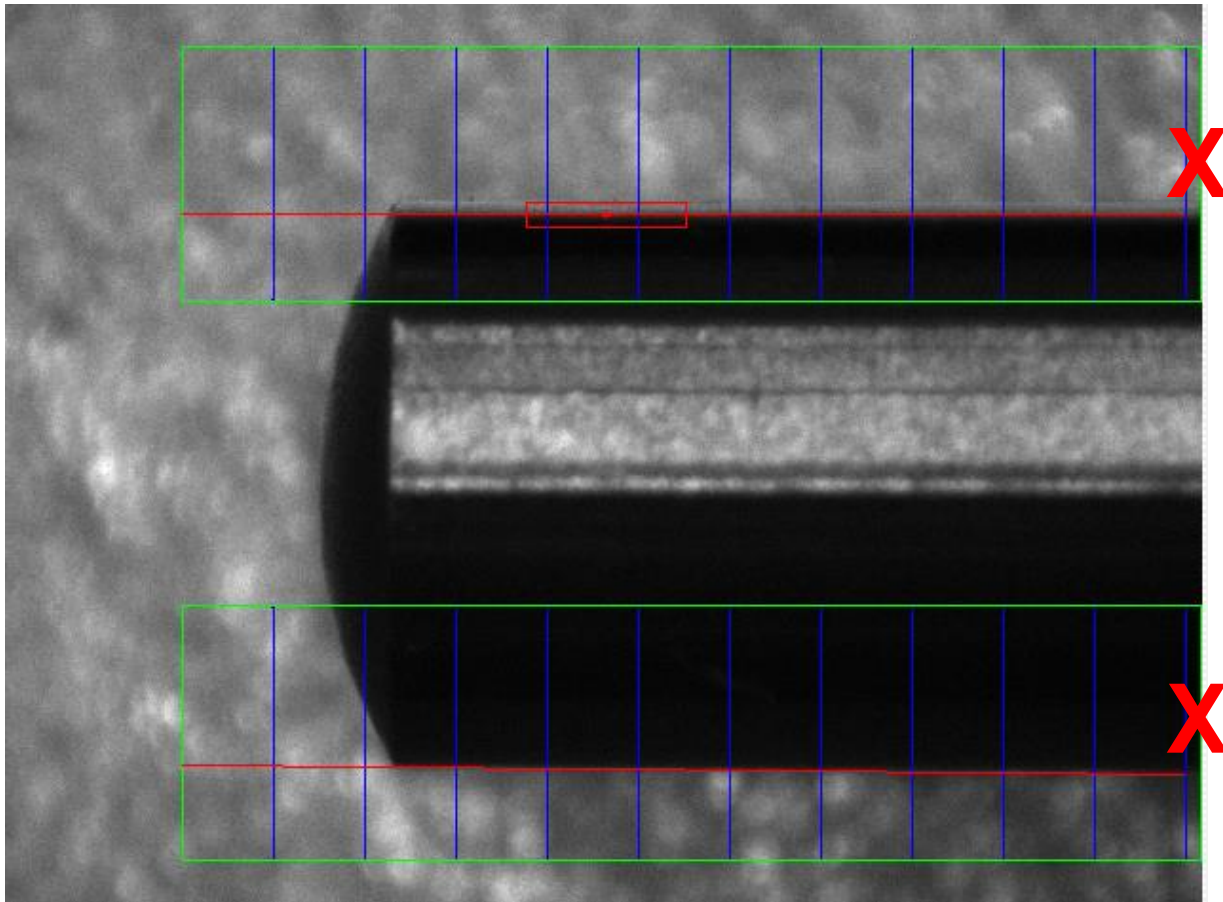


# Updates to tooling pin analysis

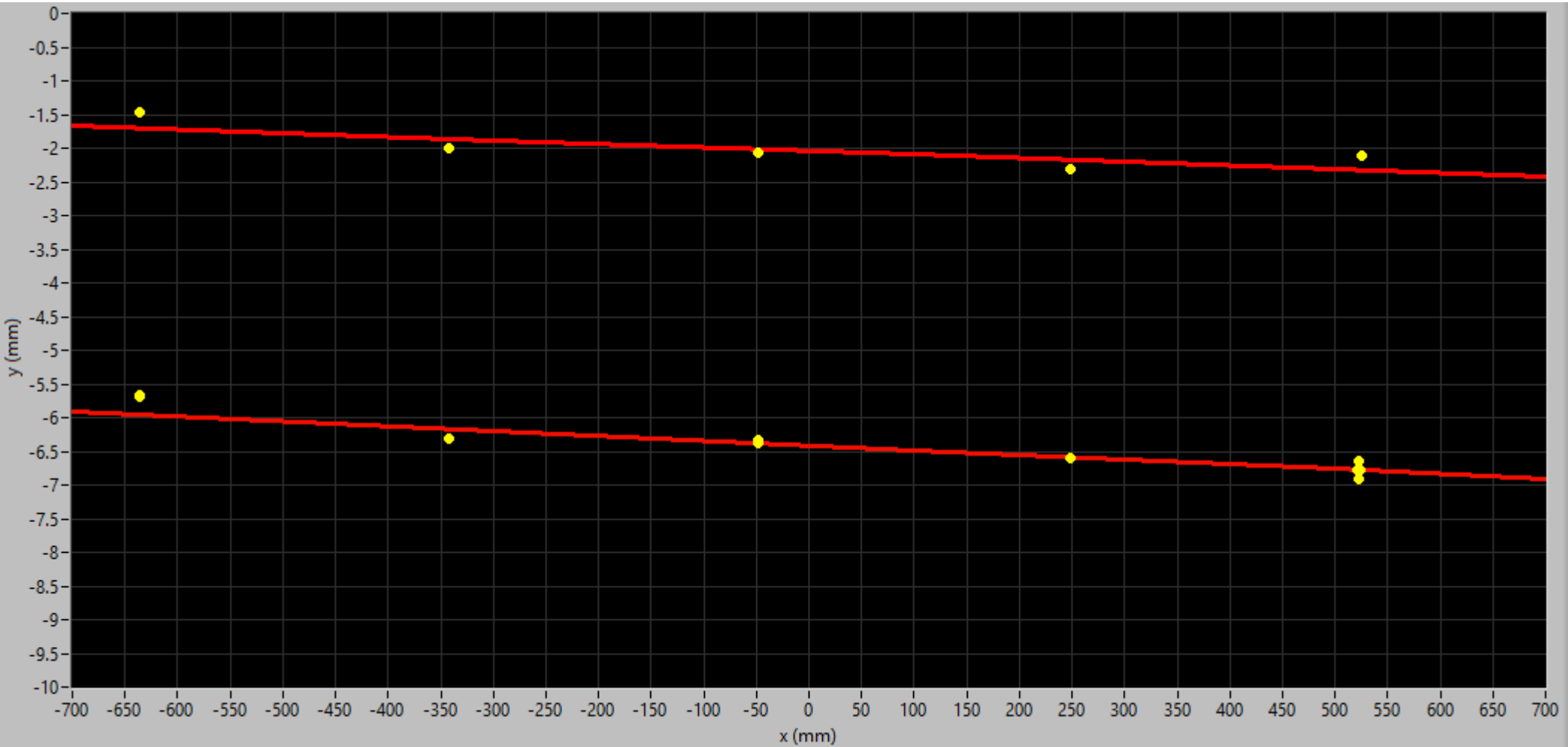
Laura Bergsten, Brandeis Univ.

20 January 2017

- Trace staves at one point (closest to locking point).
- Improve edge detection to eliminate outliers and poor fits
  - Implement new algorithm for edge detection
  - Specify new parameters for edge-minimum value, search box etc.



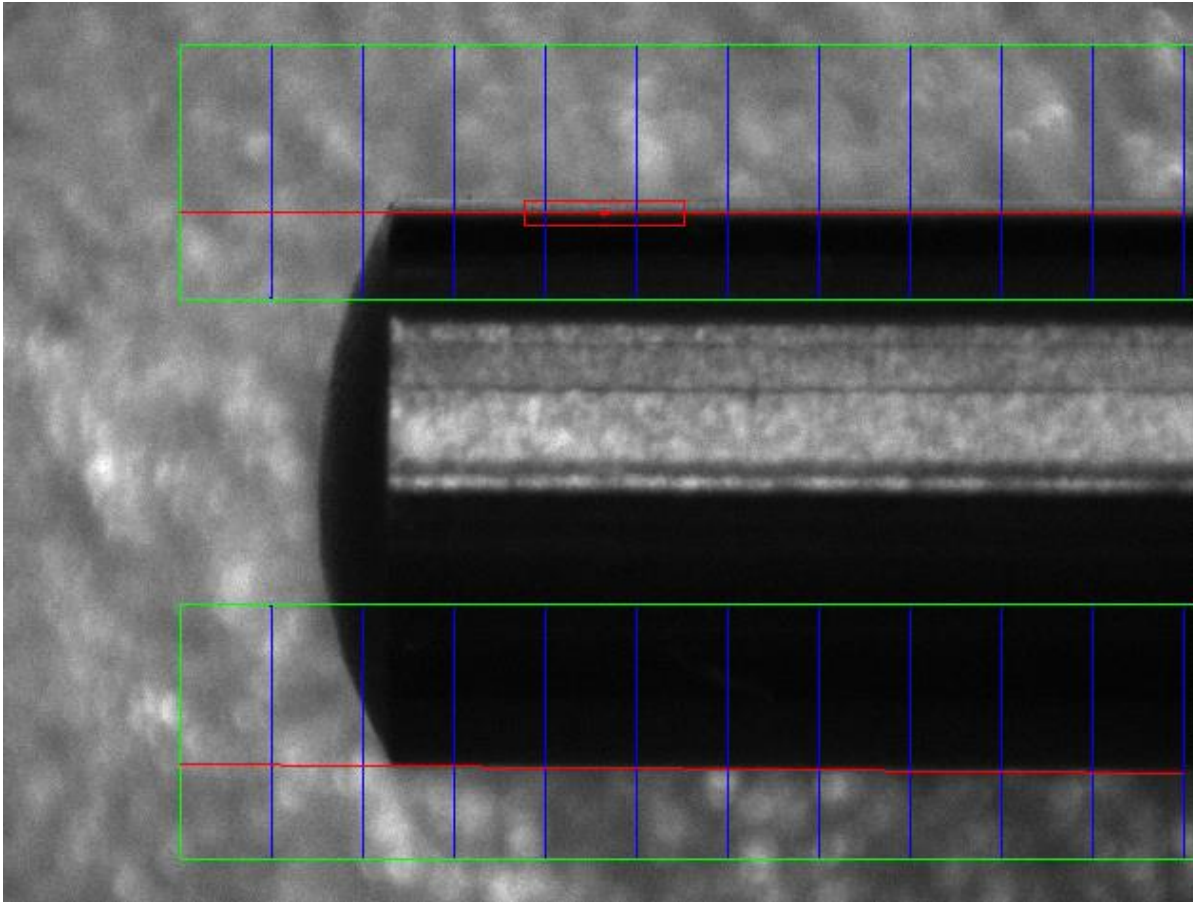
# Plot of edge endpoint for each pin



Top slope	Top intercept	Top residue
-0.000709207	-6.41062	0.0201472
Bottom slope	Bottom intercept	Bottom Residue
-0.000534502	-2.04126	0.0264157

Almost all error bars <15 microns

# Next steps



- Improve ROI for generalizability
- Analyze slopes of individual pins (test alignment)
- More?