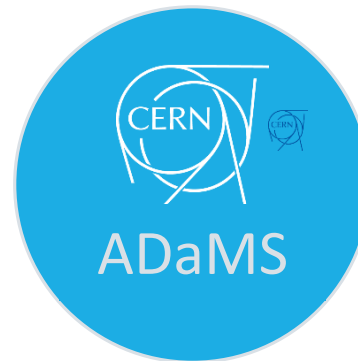


Access and Safety team of the Neutrino Platform Hall

HOW TO ACCESS THE NP HALL



1. Be registered at
CERN



2. Request **access
permission**



3. Follow the
required **safety
trainings**



4. Have a valid
IMPACT



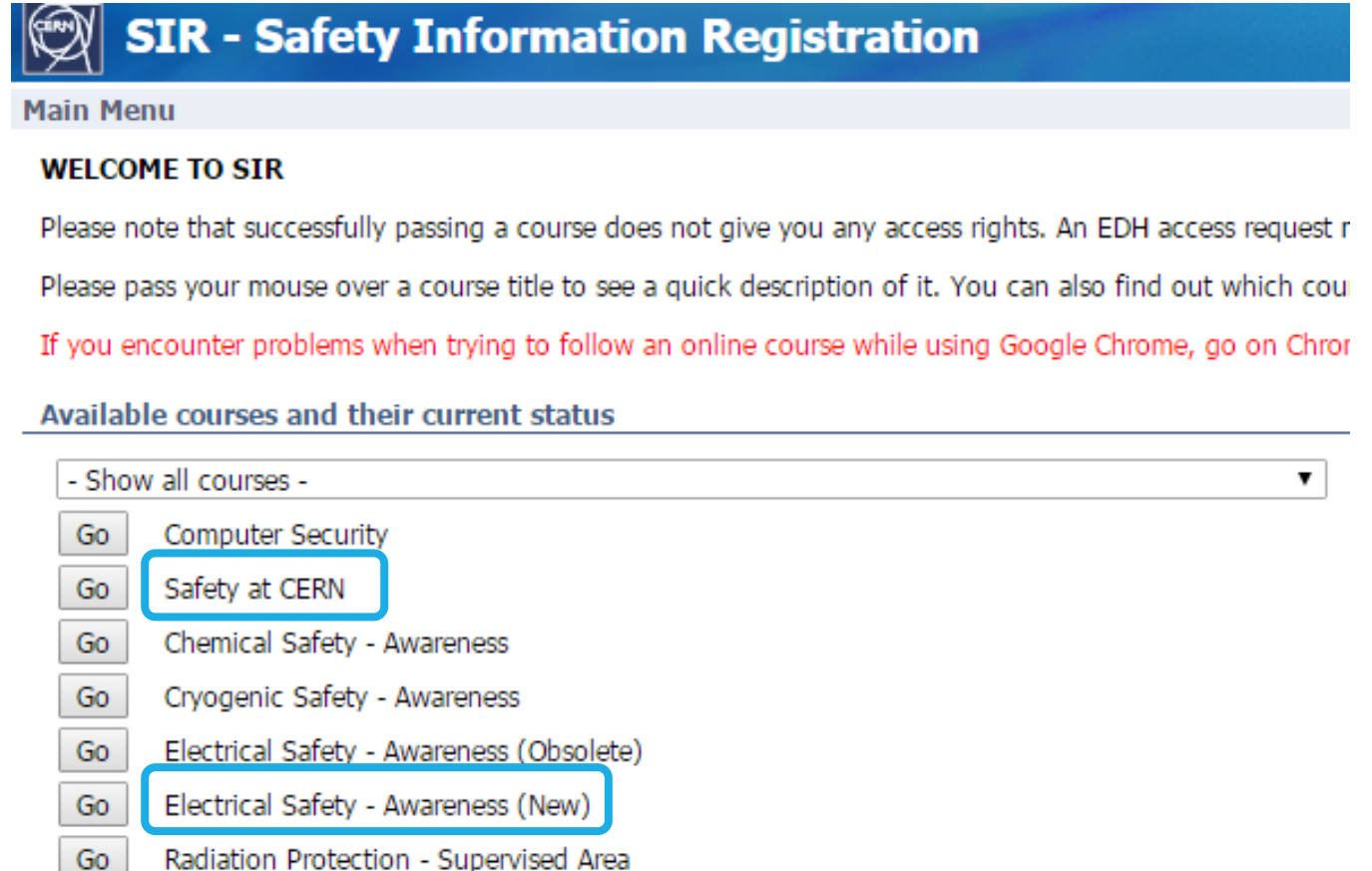
5. Wear required
**Personal Protective
Equipment (PPE)**

REQUIRED ON LINE TRAININGS

➤ On line trainings:

- <https://sir.cern.ch/>
- Only once registered at CERN
- Required trainings:
 - Safety at CERN (15 min)
 - Electrical Awareness (30 min)
 - **Neutrino Platform Hall (1 h)**

access, practical information,
activities organisation, risks in the
hall, emergency procedure, etc.



The screenshot shows the SIR - Safety Information Registration website. At the top, there is a blue header with the CERN logo and the text "SIR - Safety Information Registration". Below the header is a "Main Menu" section. The main content area starts with "WELCOME TO SIR" followed by a paragraph of text: "Please note that successfully passing a course does not give you any access rights. An EDH access request r Please pass your mouse over a course title to see a quick description of it. You can also find out which cou If you encounter problems when trying to follow an online course while using Google Chrome, go on Chror". Below this is a section titled "Available courses and their current status" with a dropdown menu set to "- Show all courses -". A list of courses follows, each with a "Go" button and the course title. The "Go" buttons for "Safety at CERN" and "Electrical Safety - Awareness (New)" are highlighted with blue boxes. The course titles "Safety at CERN" and "Electrical Safety - Awareness (New)" are also highlighted with blue boxes. The course "Neutrino Platform Hall" is not visible in this list.

SIR - Safety Information Registration

Main Menu

WELCOME TO SIR

Please note that successfully passing a course does not give you any access rights. An EDH access request r
Please pass your mouse over a course title to see a quick description of it. You can also find out which cou
If you encounter problems when trying to follow an online course while using Google Chrome, go on Chror

Available courses and their current status

- Show all courses -

Go Computer Security

Go **Safety at CERN**

Go Chemical Safety - Awareness

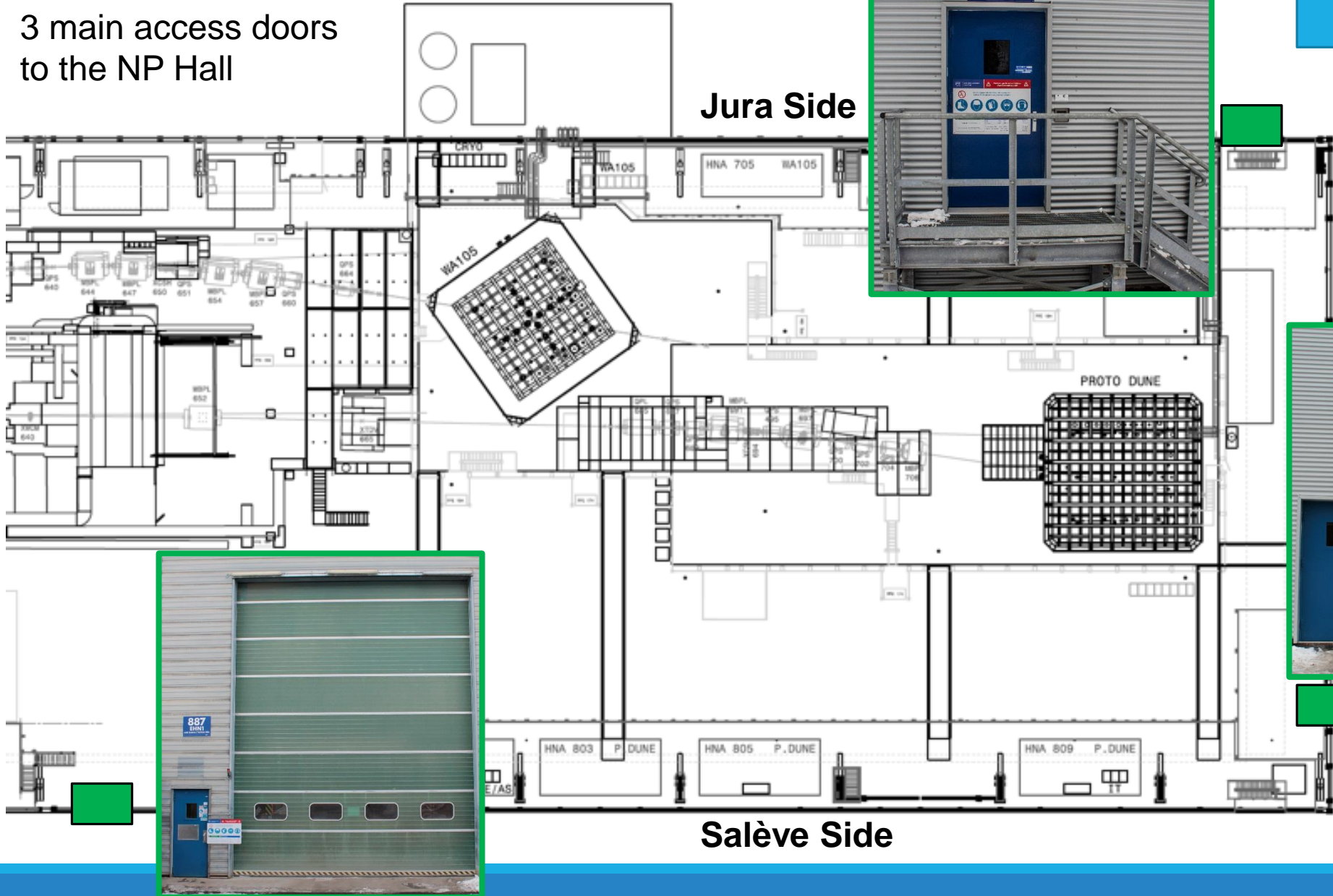
Go Cryogenic Safety - Awareness

Go Electrical Safety - Awareness (Obsolete)

Go **Electrical Safety - Awareness (New)**

Go Radiation Protection - Supervised Area

3 main access doors to the NP Hall



Jura Side

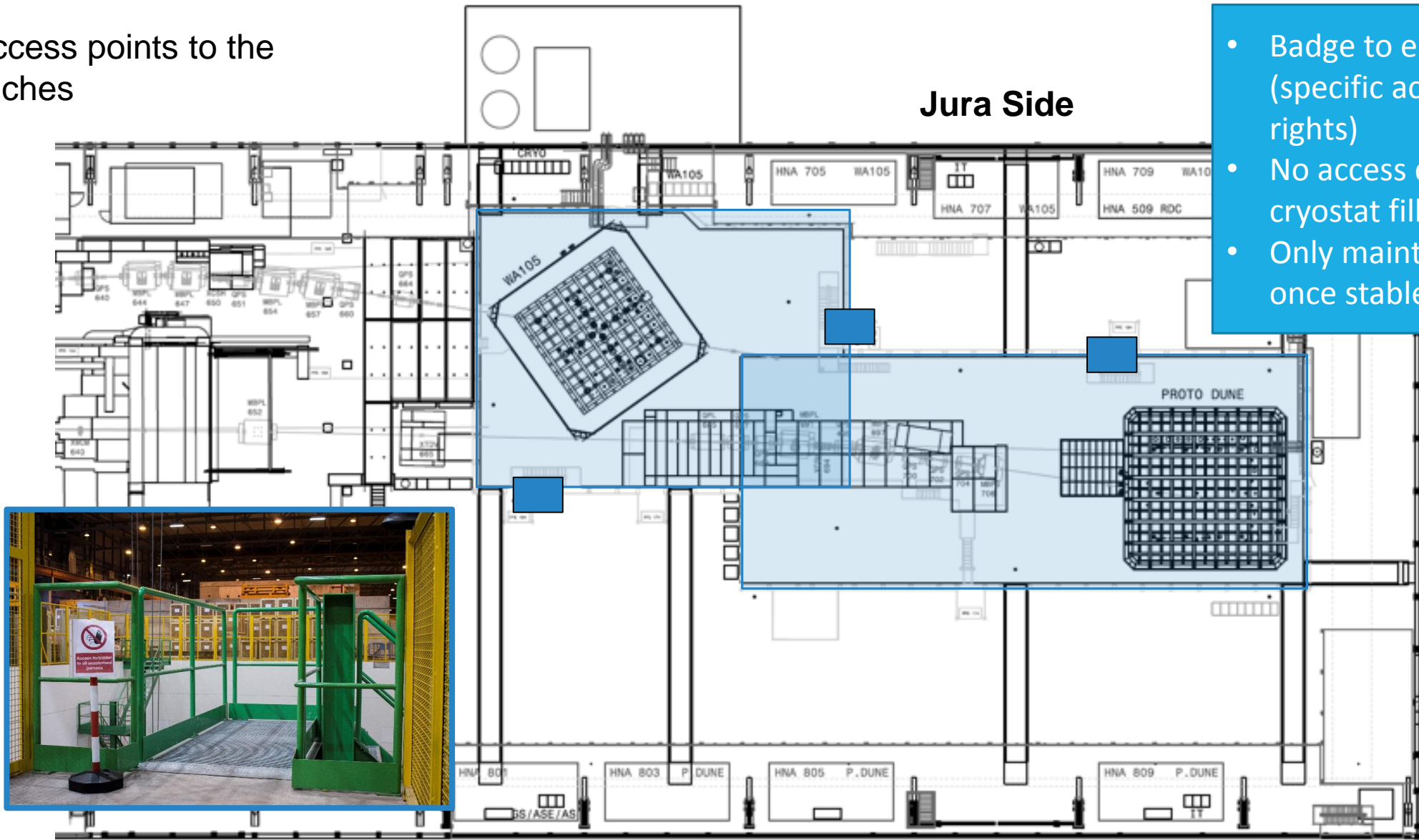
Salève Side



Badge to enter!



3 access points to the trenches



- Badge to enter (specific access rights)
- No access during cryostat filling
- Only maintenance once stable

Salève Side

■ 2 access points to the top of the cryostats

Jura Side



- Badge to enter (specific access rights)
- Always accessible

Salève Side

THE SAFETY TEAM

PSO
Project Safety Officer



Safety of the construction yard (installation phase)

TSO
Territorial Safety Officer



Safety of the building and premises

DSO
Departmental Safety Officer



Safety of the experiment and experimental area

EXSO
Experimental Safety Officer



Safety in situ of the experiment (commissioning and operational phase)

... plus:

HSE
Health & Safety and
Environmental
Protection
Department