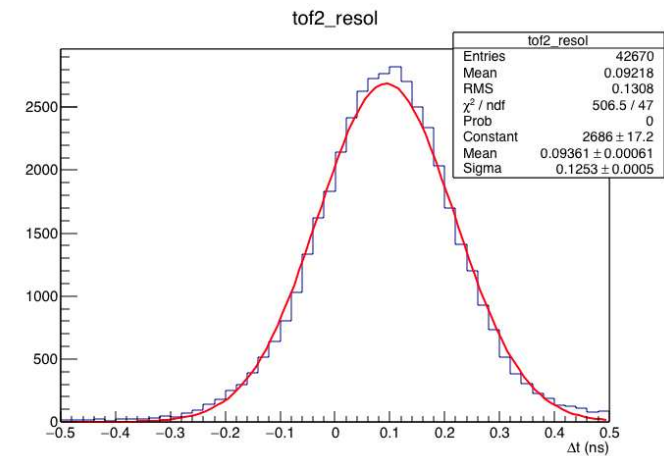
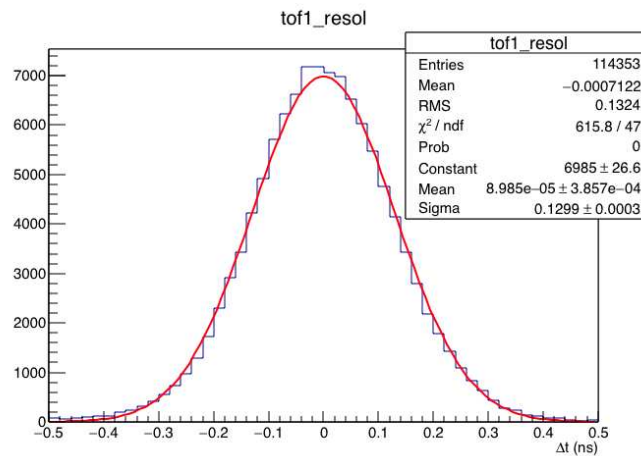
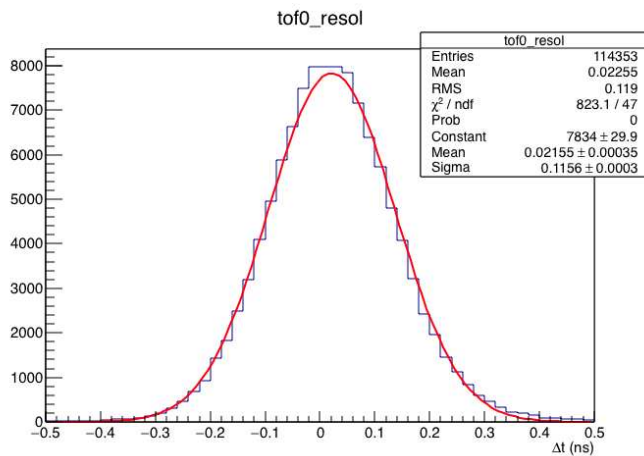

TOF Status

Scott Wilbur

Calibrations

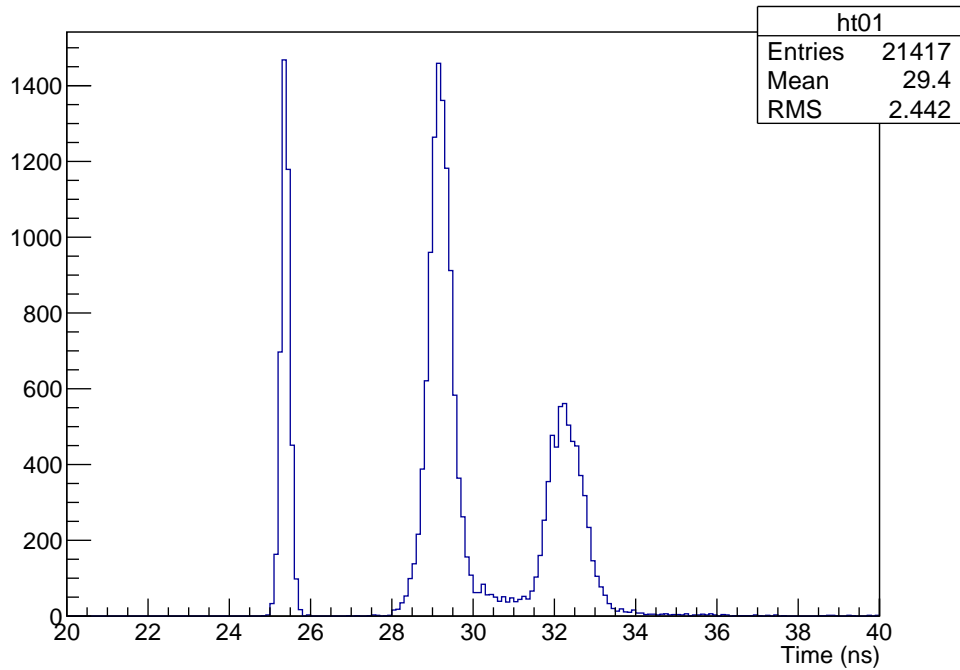
- Most recent calibration was in October
 - TOF calibration run during 2016/05, but tracking down a bug
- Resolutions have slightly worsened over time

Detector	2012 Res.	2016 Res.
TOF0	52 ps	58 ps
TOF1	60 ps	65 ps
TOF2	53 ps	63 ps

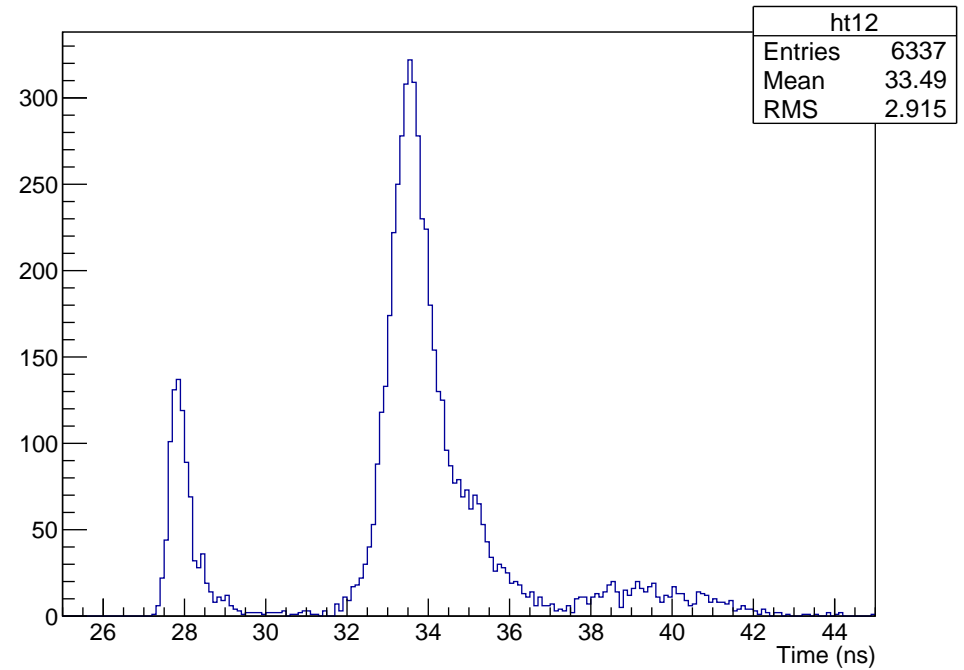


Performance Plots

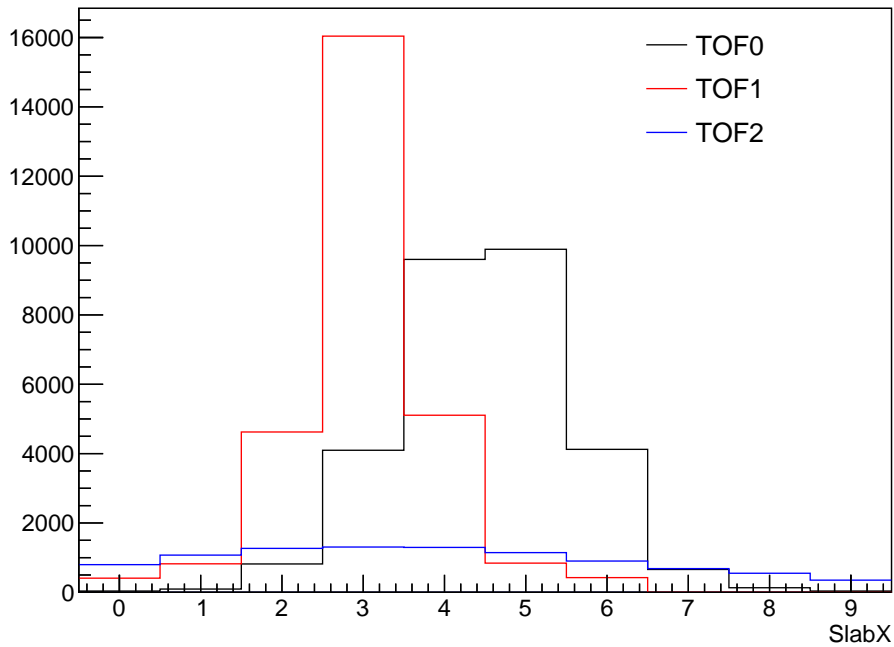
TOF0->1, Run 9160



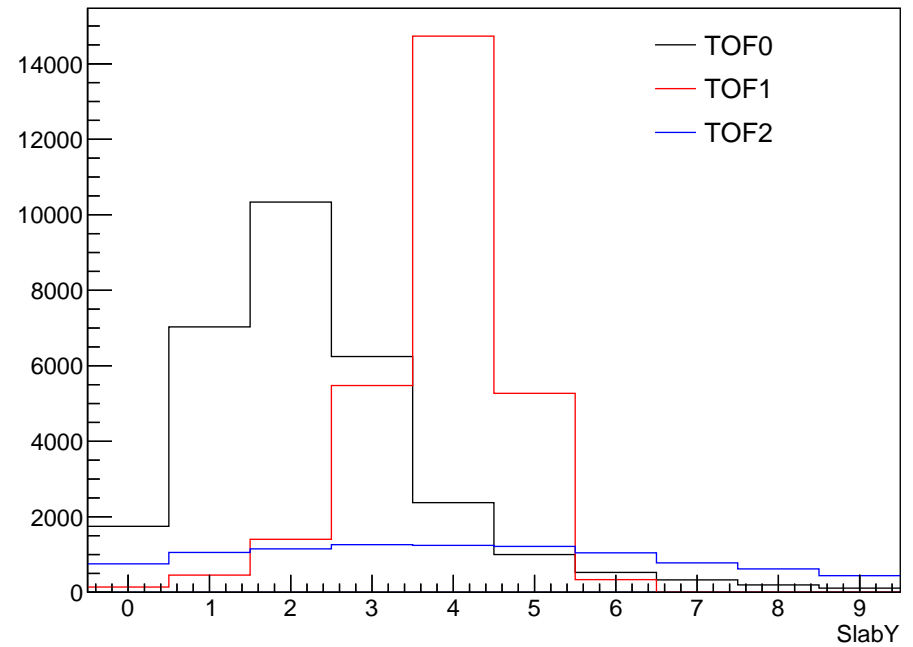
TOF1->2, Run 9160



SlabHits X-view

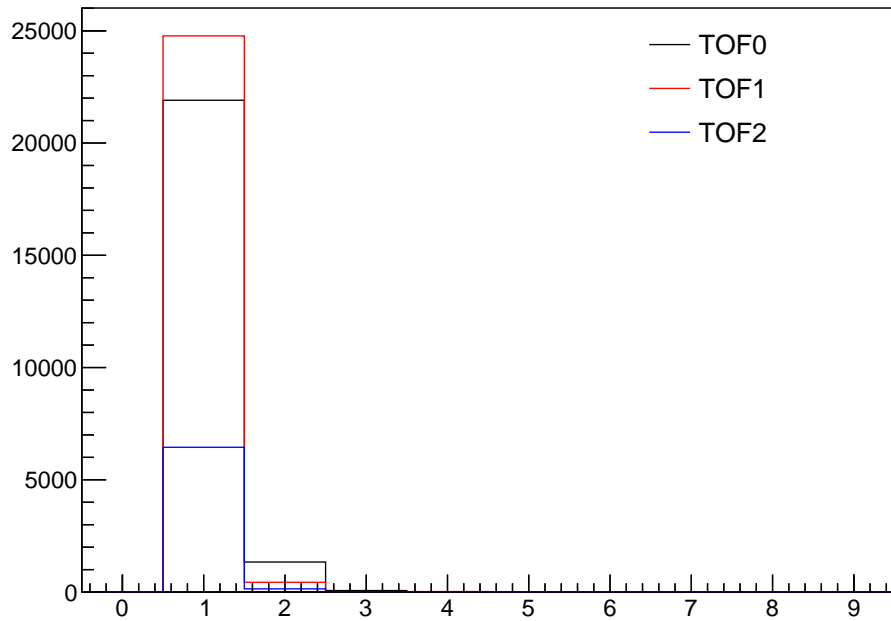


SlabHits Y-view

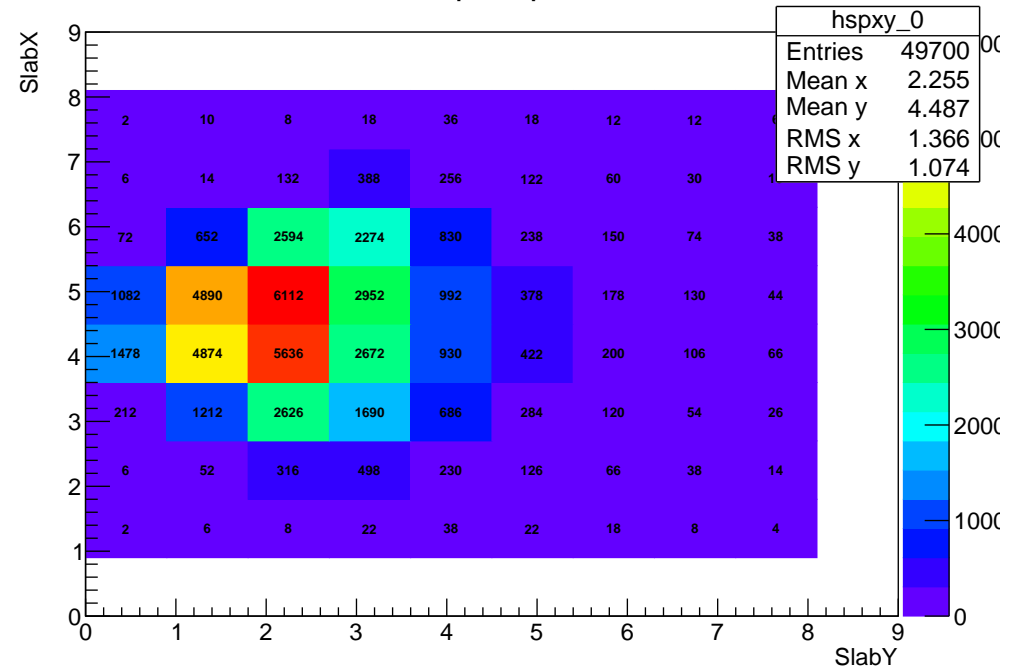


Performance Plots

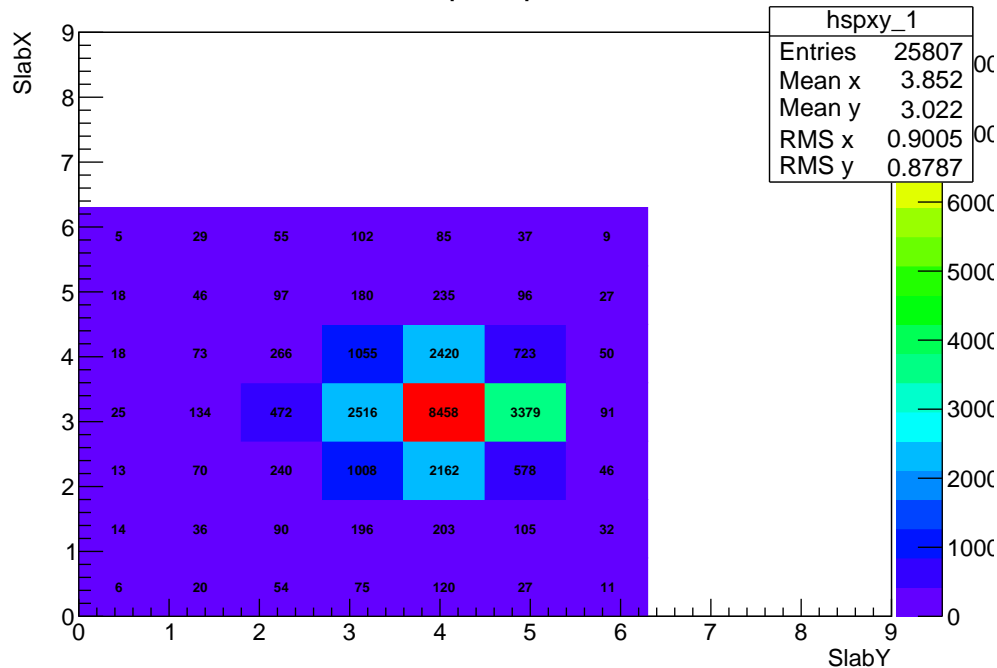
Spacepoints



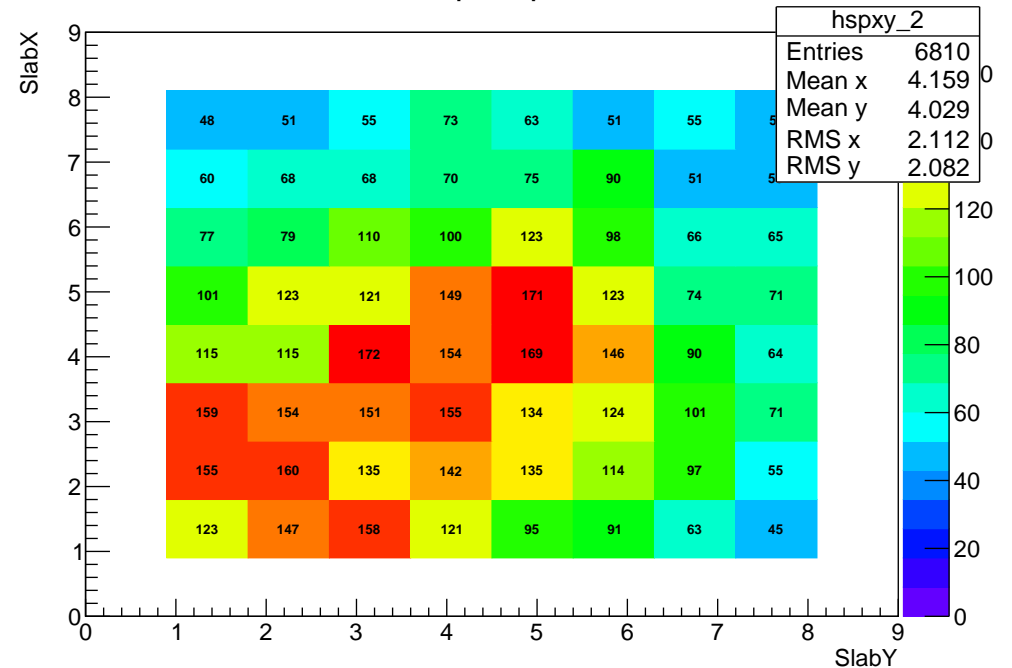
tof0 spacepoints, Run 9160



tof1 spacepoints, Run 9160

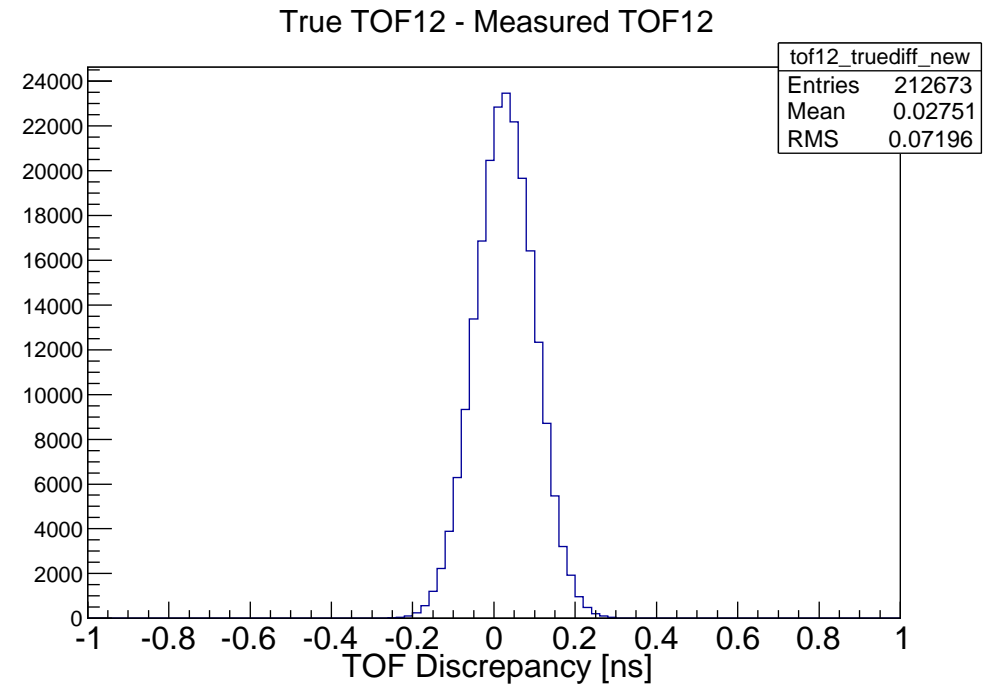
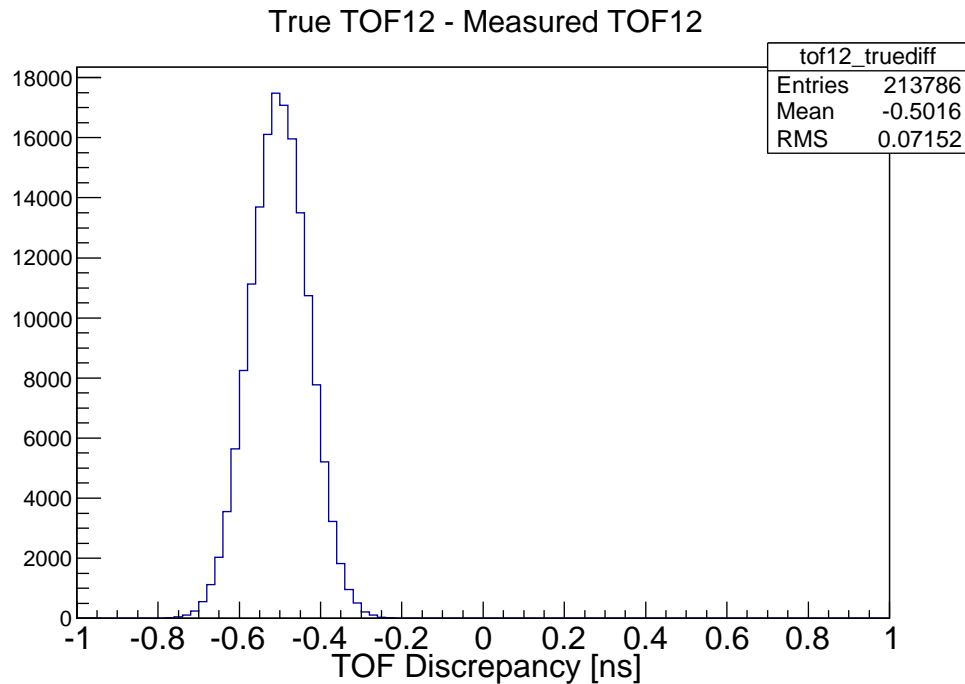


tof2 spacepoints, Run 9160



MC Improvements

- True TOF - Measured TOF discrepancy is finally resolved
- Problem was light travel time in TOF slabs, first fix broke Rayner's reconstruction



Remaining Bugs

- A few remaining bugs of order tens of ps
- MC true – measured TOF is fine in TOF01, 27 ps in TOF12
- Δt between slabs is fine in TOF0 and TOF1, 60-100 ps in TOF2

