



ATLAS Quarterly Report and Plans

Dario Barberis

CERN & Genoa University/INFN



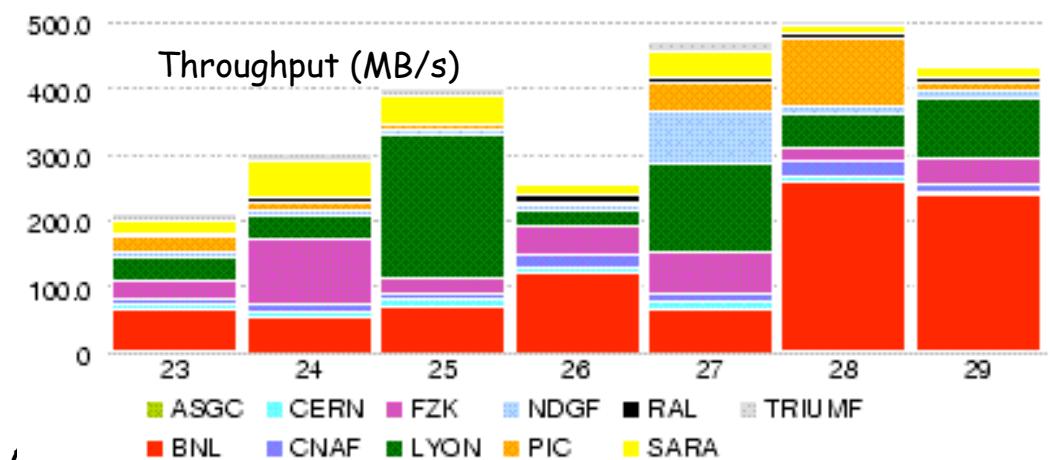
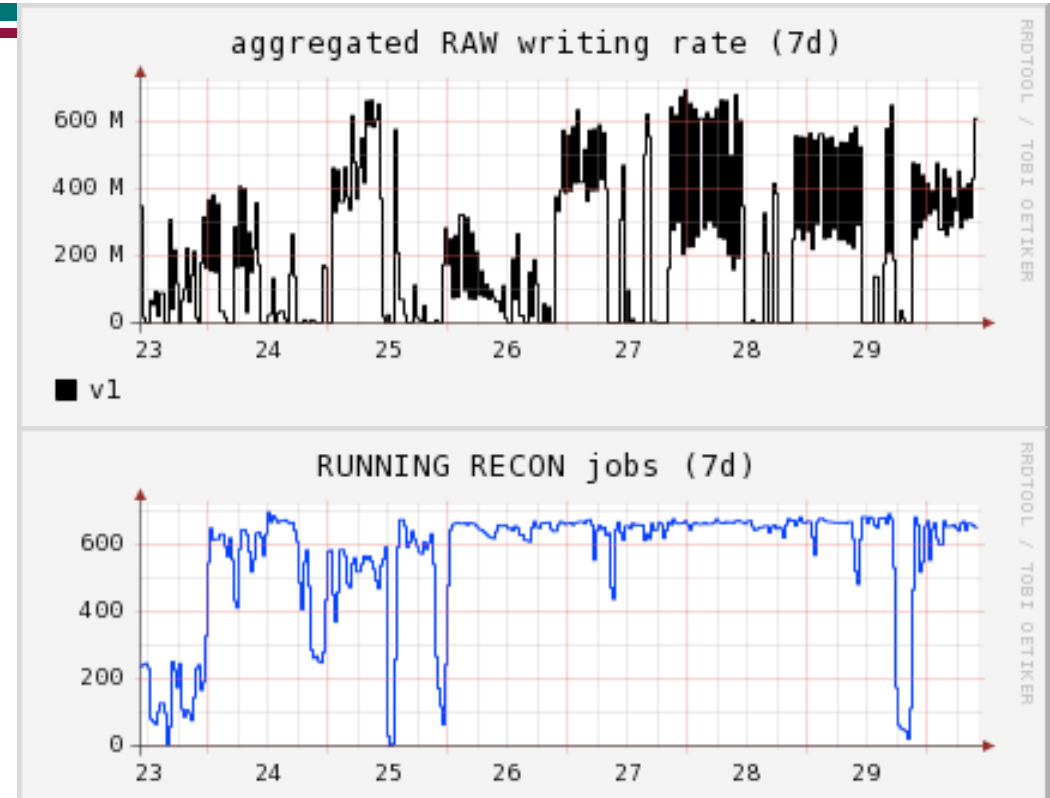
Outline

- No STEP'09 report today
 - ATLAS post-mortem tomorrow afternoon
- Tier-0 and data-taking activities
- Data reprocessing
- Functional tests
- SAM tests
- Simulation Production
- Plans



Tier-0 and data-taking activities

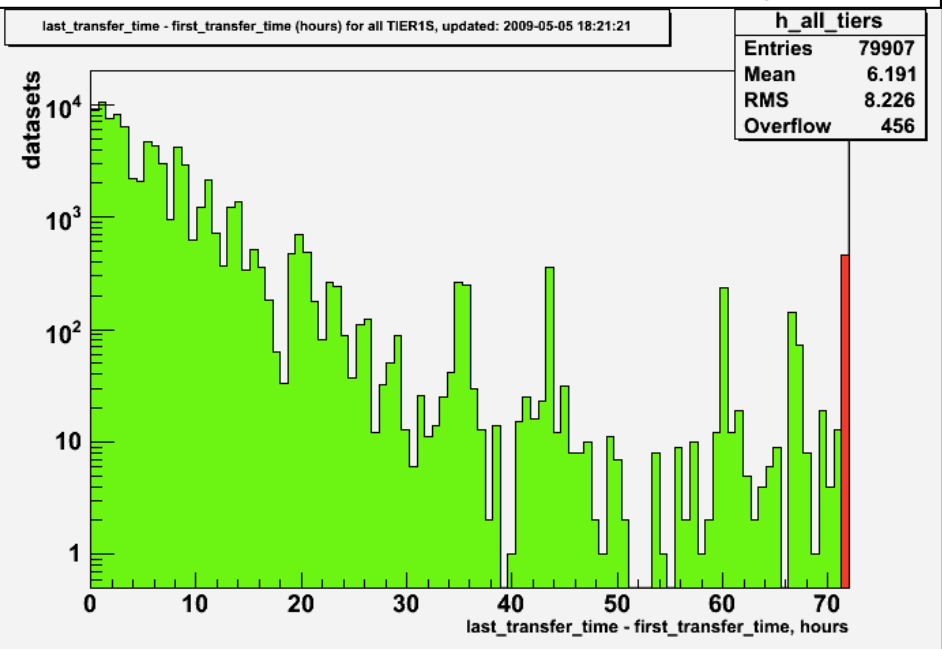
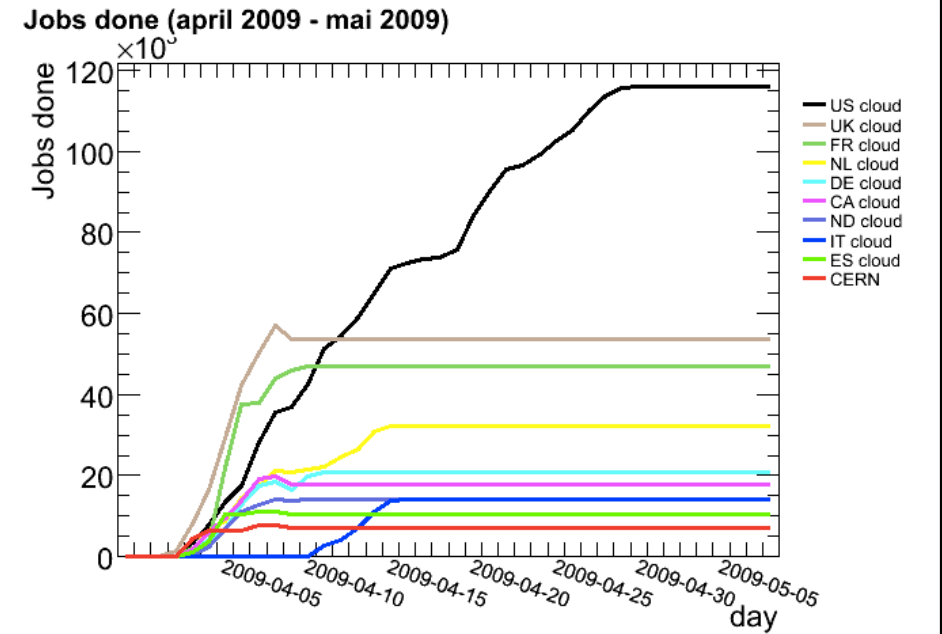
- Partial read-out tests ("slice weeks") started in March and continued till mid-June
 - These are mostly DAQ tests, turning into more complete tests (including Trigger) during May
- Global cosmic data-taking runs restarted last week
 - Different detector, field and trigger configurations
 - No data transfer to RAL and ASGC
- The STEP'09 exercise took place in the first half of June
- There will be a gap in July-August and will restart with global cosmics in September
- Will be ready for collisions in Autumn 2009





Data reprocessing

- We ran during the Easter period a reprocessing campaign for single-beam and cosmic data taken in August-November 2008
- 500 TB of raw data were processed (mostly) from tape in all 10 Tier-1 sites
- Reconstructed data were merged and distributed to other Tier-1/2s
- A third reprocessing campaign will take place at the end of July
 - Starting this time from ESDs
 - no low-level recalibration
- In the meantime there will be a "fast reprocessing" exercise with the current cosmics

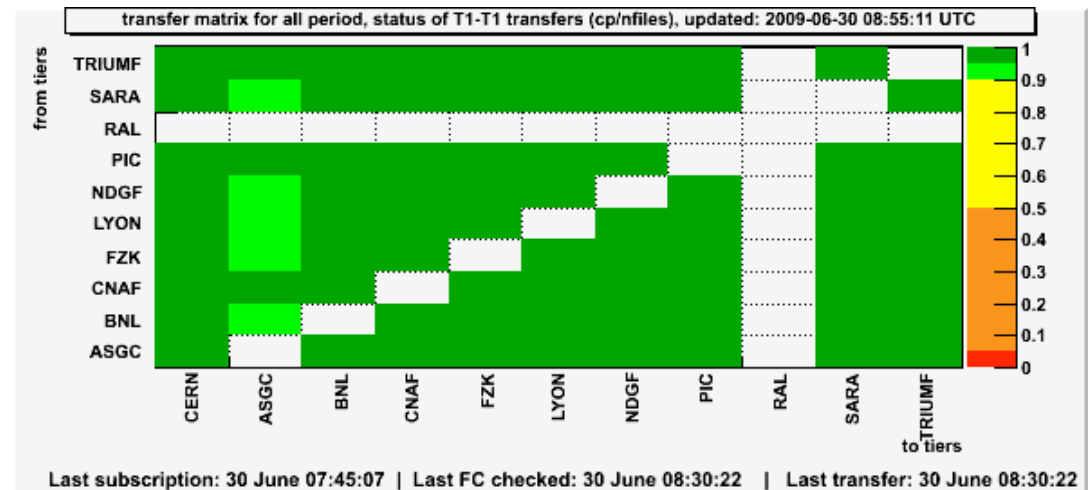




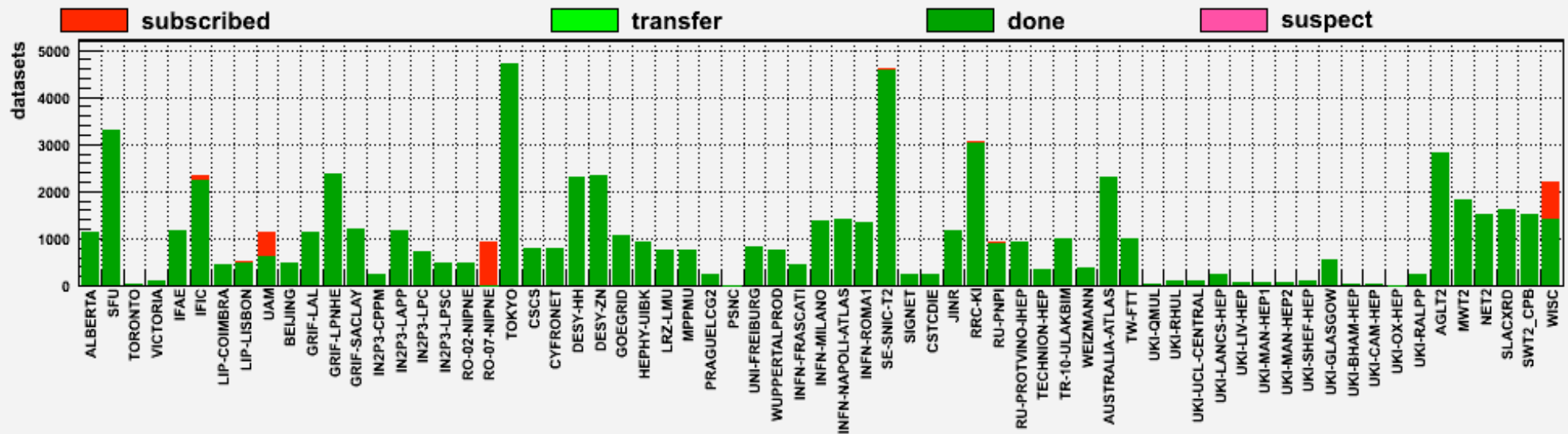
Data export functional tests

- We continue running data export functional tests at low level to keep checking the health of the whole system
- Site contacts are promptly notified of problems and we follow up all troubles together

FT data transfers 25/06/09-30/06/09



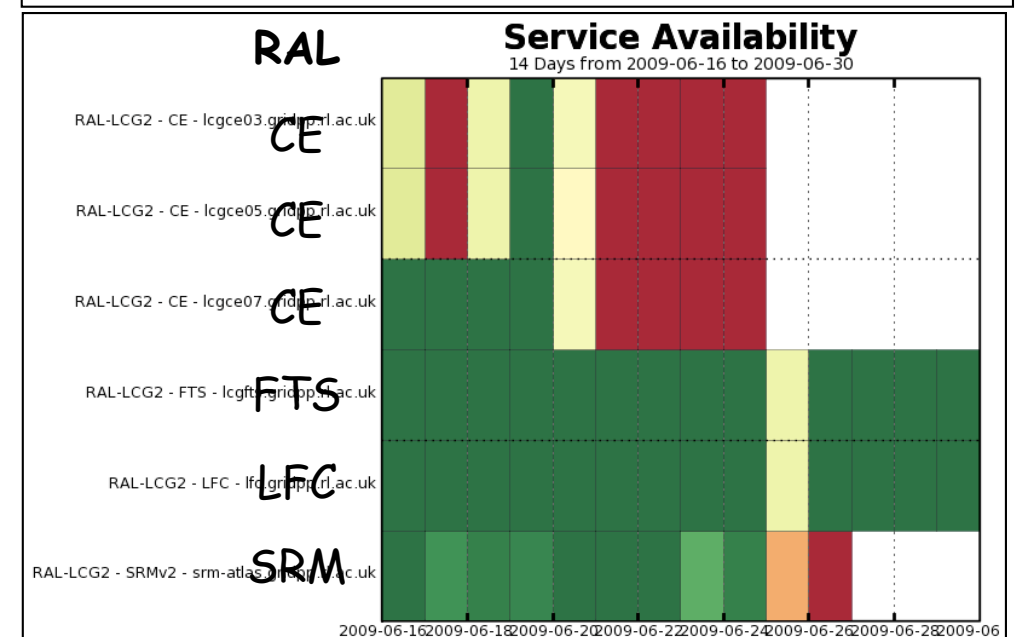
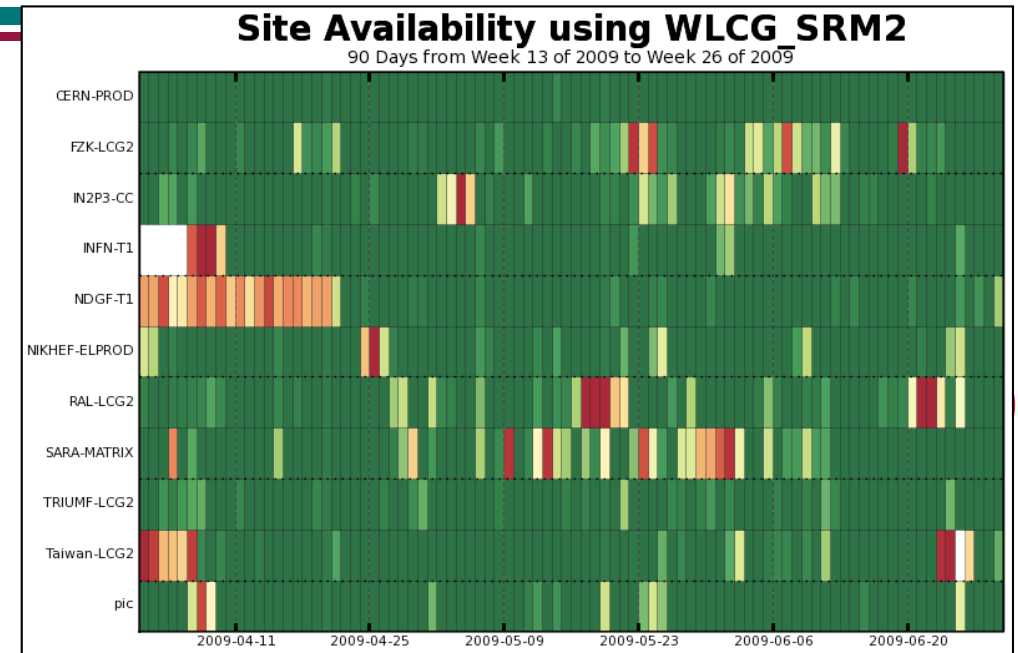
dataset status statistics for all period, TIER2S+ only, updated: 2009-06-30 09:15:04 UTC





SAM availability tests

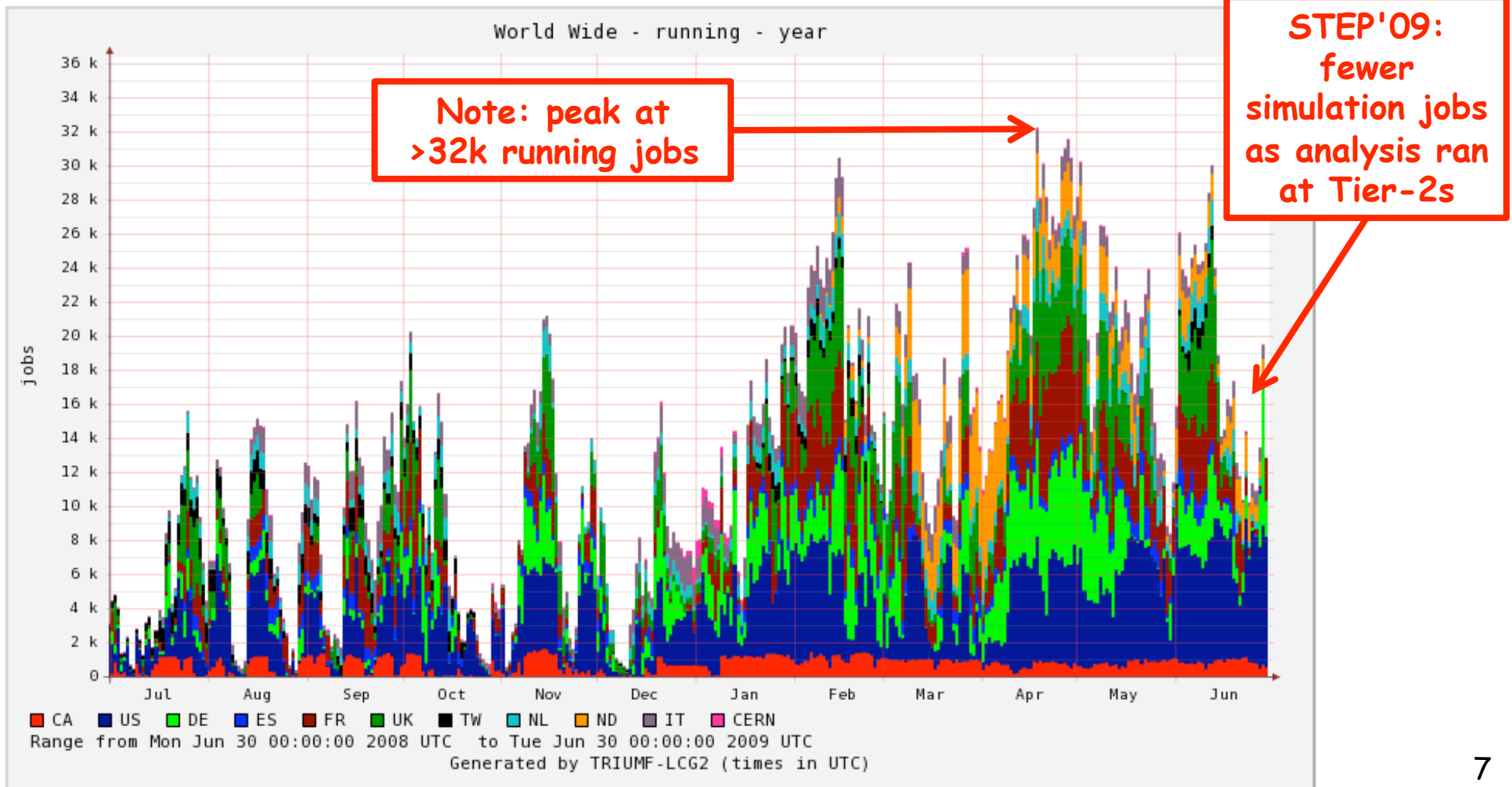
- SAM tests keep overestimating the site availability
- When sites are in downtime and switch off services from the BDII, these services are not tested, but they are not included in the total availability calculation
- See RAL this week:
 - CE and SRM are removed from BDII (white in SAM tests)
 - FTS and LFC work OK (green)
 - The total availability is calculated as 100% from LFC and FTS only
 - I would not call this an "available Tier-1 site"
 - No blame to RAL of course!





Simulation production

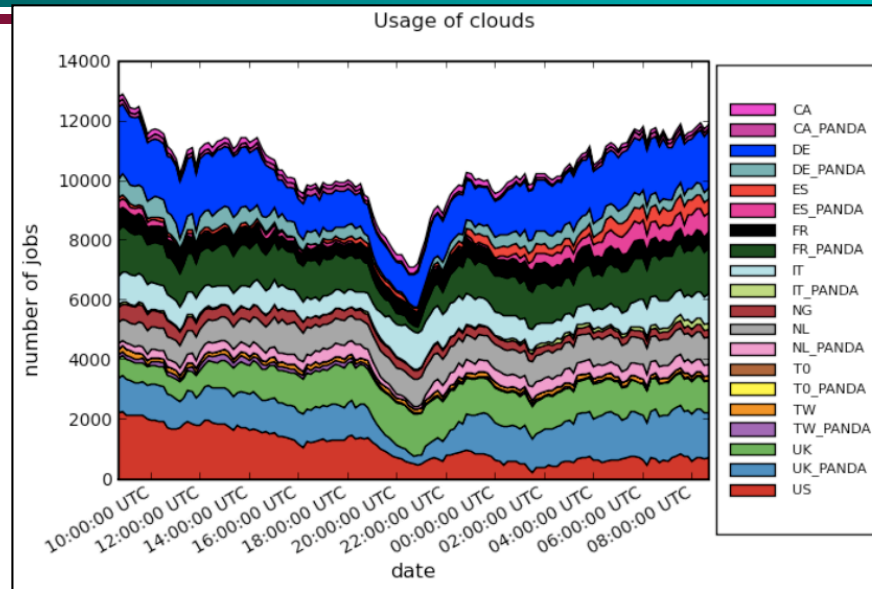
- Simulation production continues in the background all the time
 - Only limited by physics requests and the availability of disk space for the output



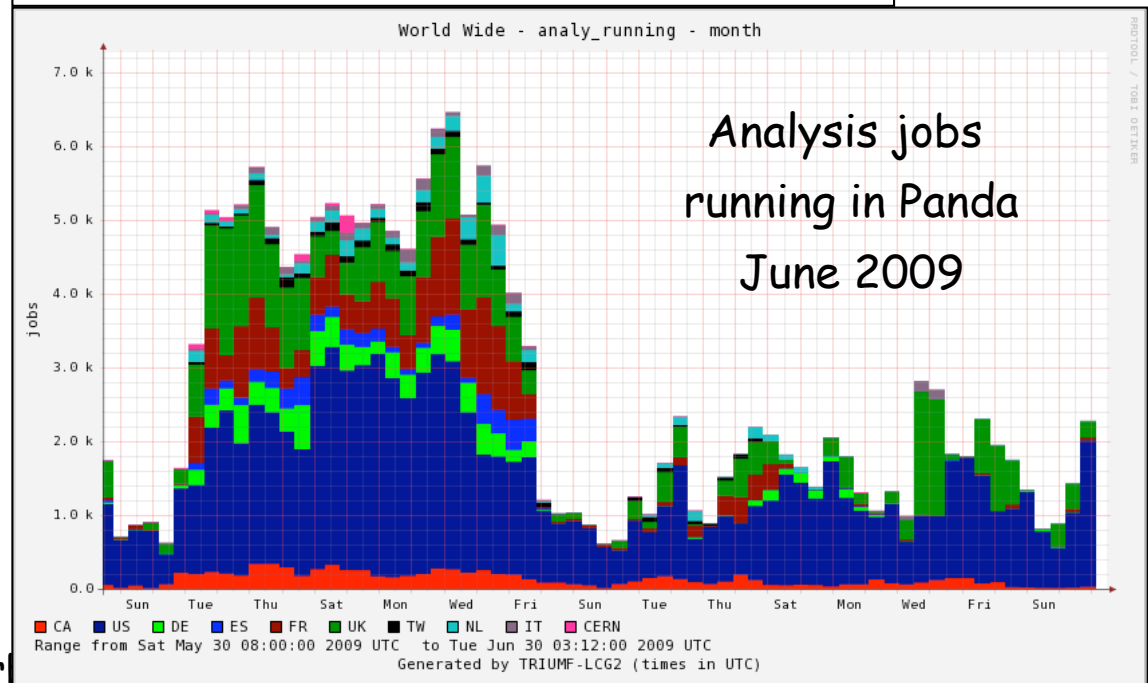


HammerCloud tests

- HammerCloud tests run now on all Grid flavours and back-ends
 - Panda on OSG
 - ARC on NorduGrid
 - Panda and WNS on EGEE
- They use a mixture of real analysis jobs running on AODs and DPDs produced by simulation and cosmics
 - More database intensive tasks will be added in the near future
- Lots of jobs were run as part of STEP'09



Example of HC running jobs during 24 hours on 10-11 June in STEP'09





Plans

- Software releases:
 - Release 15.3.0
 - Last week.
 - Base release for Summer 2009 operations.
 - Releases 15.X.0
 - Once/month (or 6 weeks). Incremental code improvements.
- Cosmic runs:
 - Complete detector:
 - In progress
- STEP'09:
 - ATLAS post-mortem tomorrow
- Collision data:
 - We'll be ready for this Autumn
 - Resource needs have been re-evaluated and are discussed now with the C-RRB Scrutiny Group referees and next week with the LHCC