



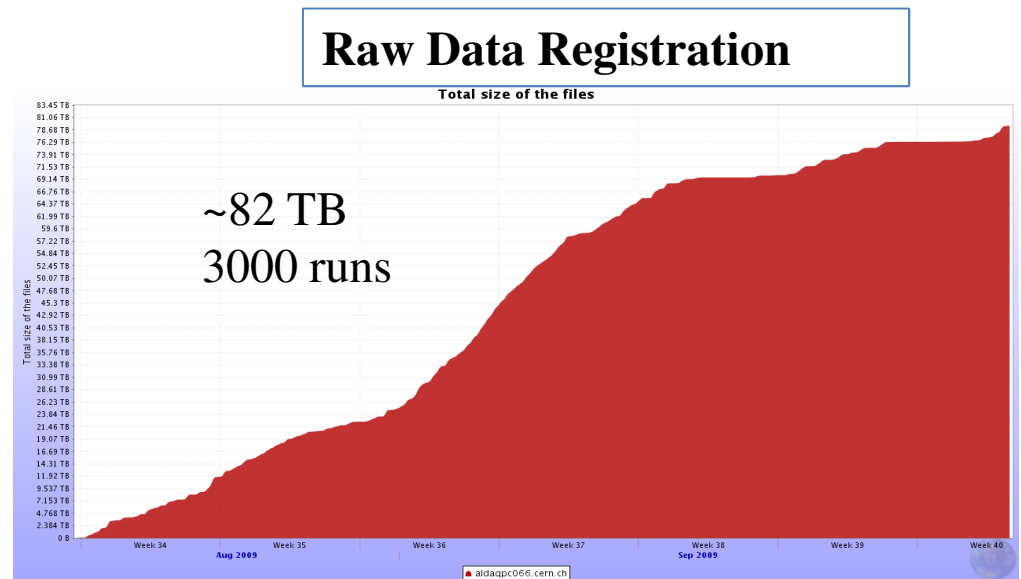
# ALICE QUARTERLY REPORT 2009Q3

# Summary

- **Data Taking**
  - Resumed since August (cosmic, calibration and injection tests)
- **Data Processing**
  - Cosmics and calibration data being continuously processed at T0
- **MC Data Production**
  - On demand productions in preparation of 2009/2010 data taking
- **Software**
  - Final AliRoot release in production
- **Services**
  - SL5 and CREAM being deployed
- **Analysis**
  - CAF (fast), analysis train (organized) and end user analysis (chaotic) running routinely
- **Milestones**

# Data taking

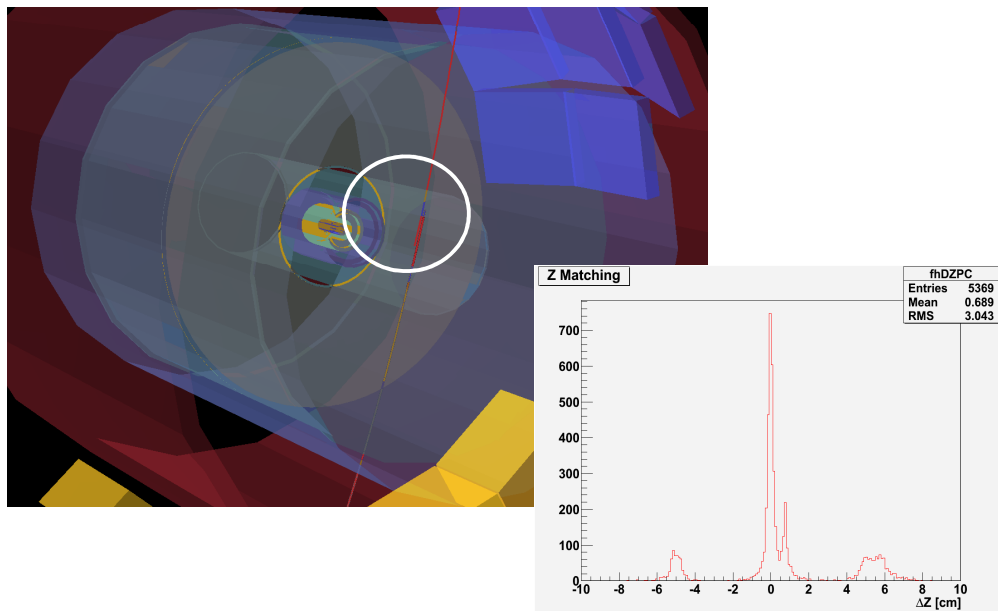
- Data taking with complete detector has resumed in **July 2009**
  - Cosmics
  - Injection tests
    - 11-12 July: T12 transfer line test
    - 25-28 September: T12-T18 transfer line test
  - All Tier0/CAF tasks are continuously exercised, except export to T1s and pass2 reconstruction, for the sake of saving storage



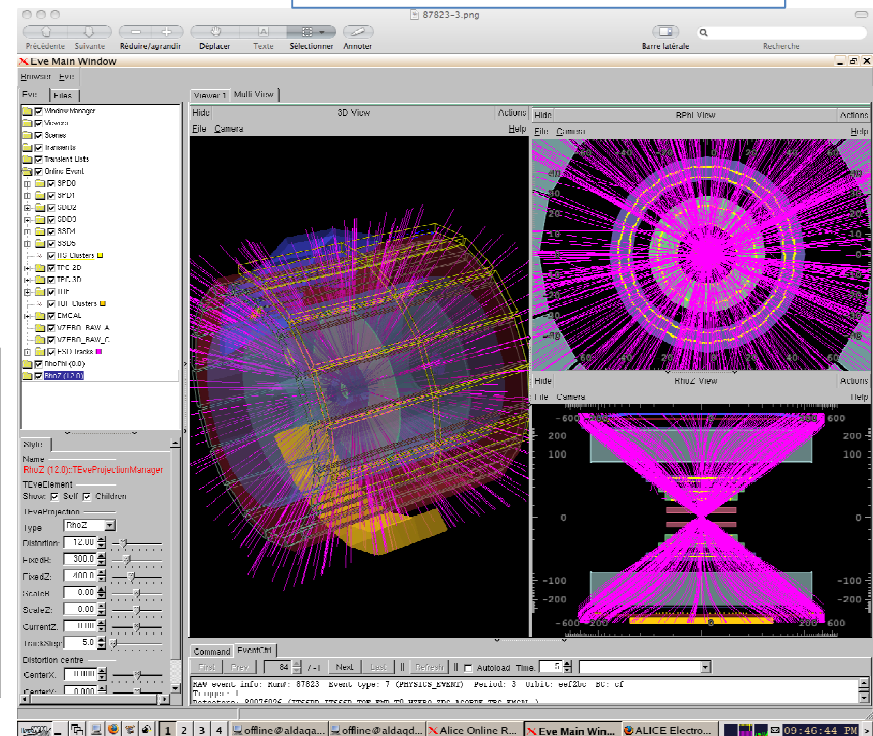
# Data processing

- All data are reconstructed in a first pass at T0
- Reconstructed data analyzed on the 2 AF (CERN & GSI) and on the GRID

## Cosmic DQM



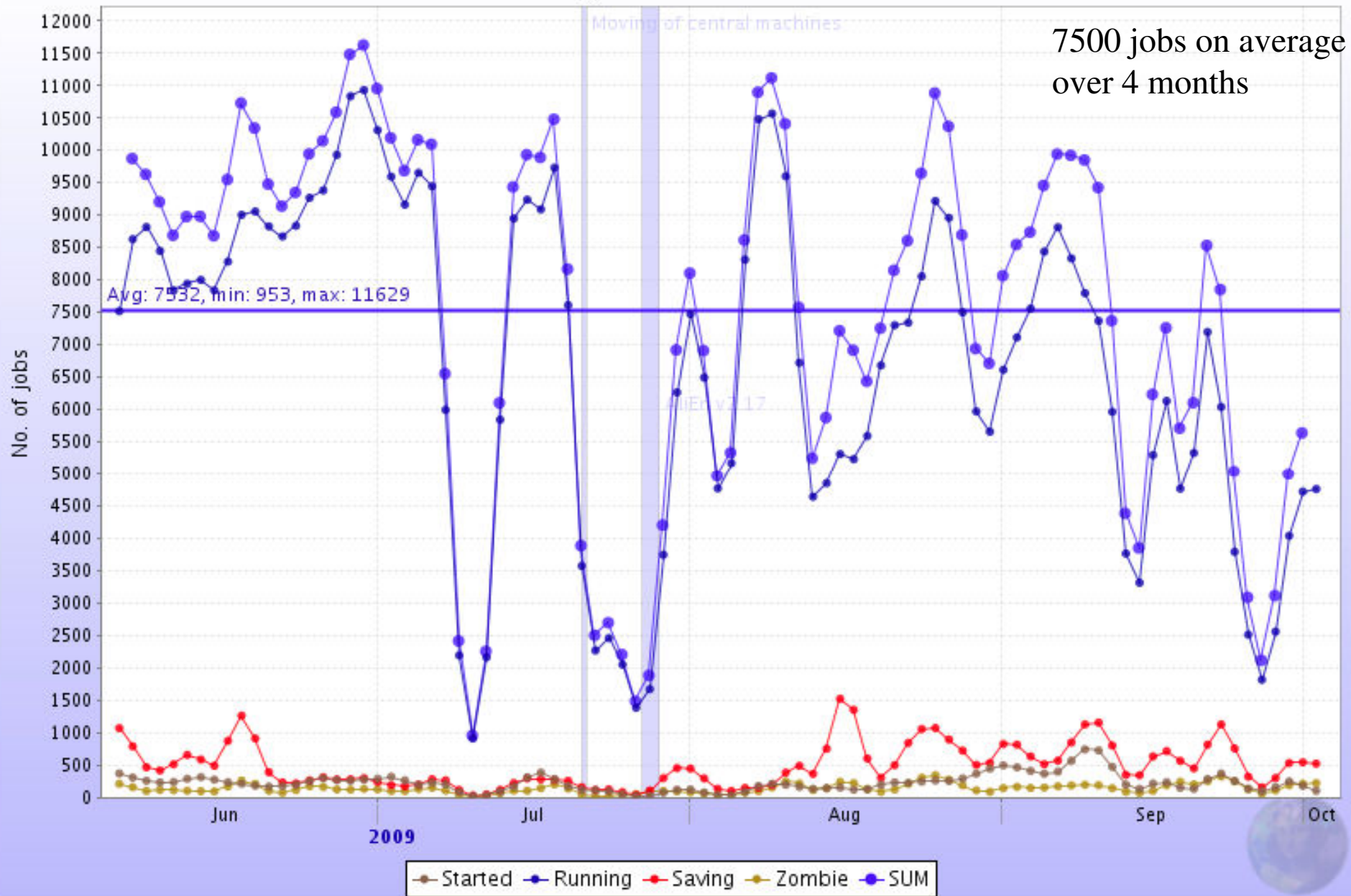
## Lead Beam splash



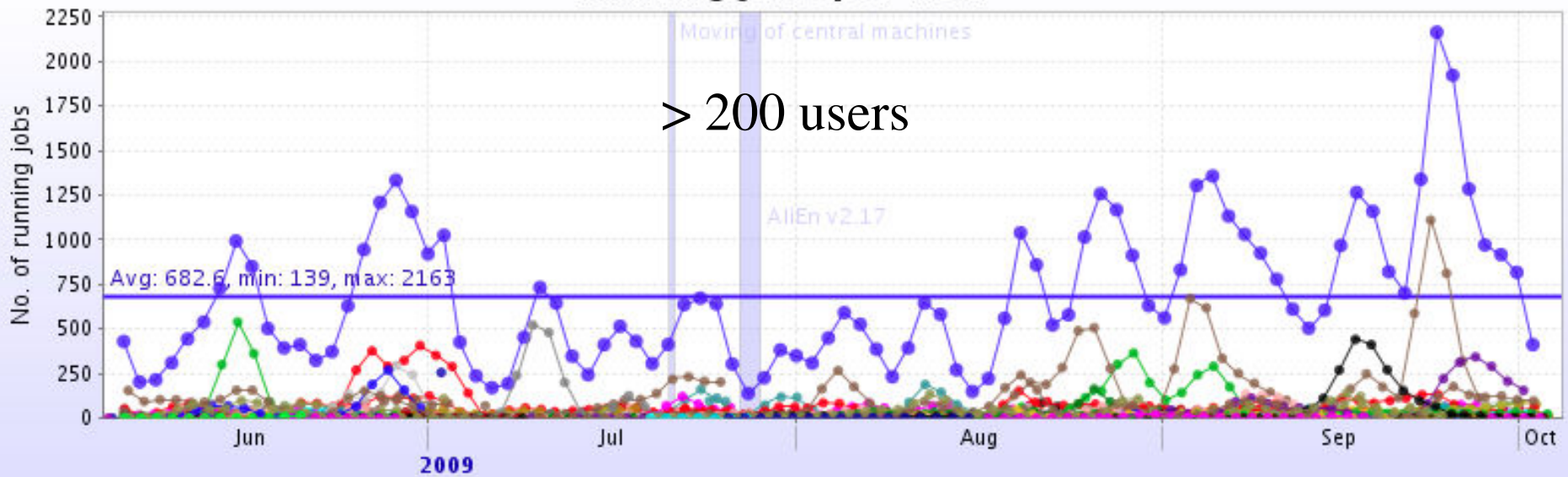
# Productions

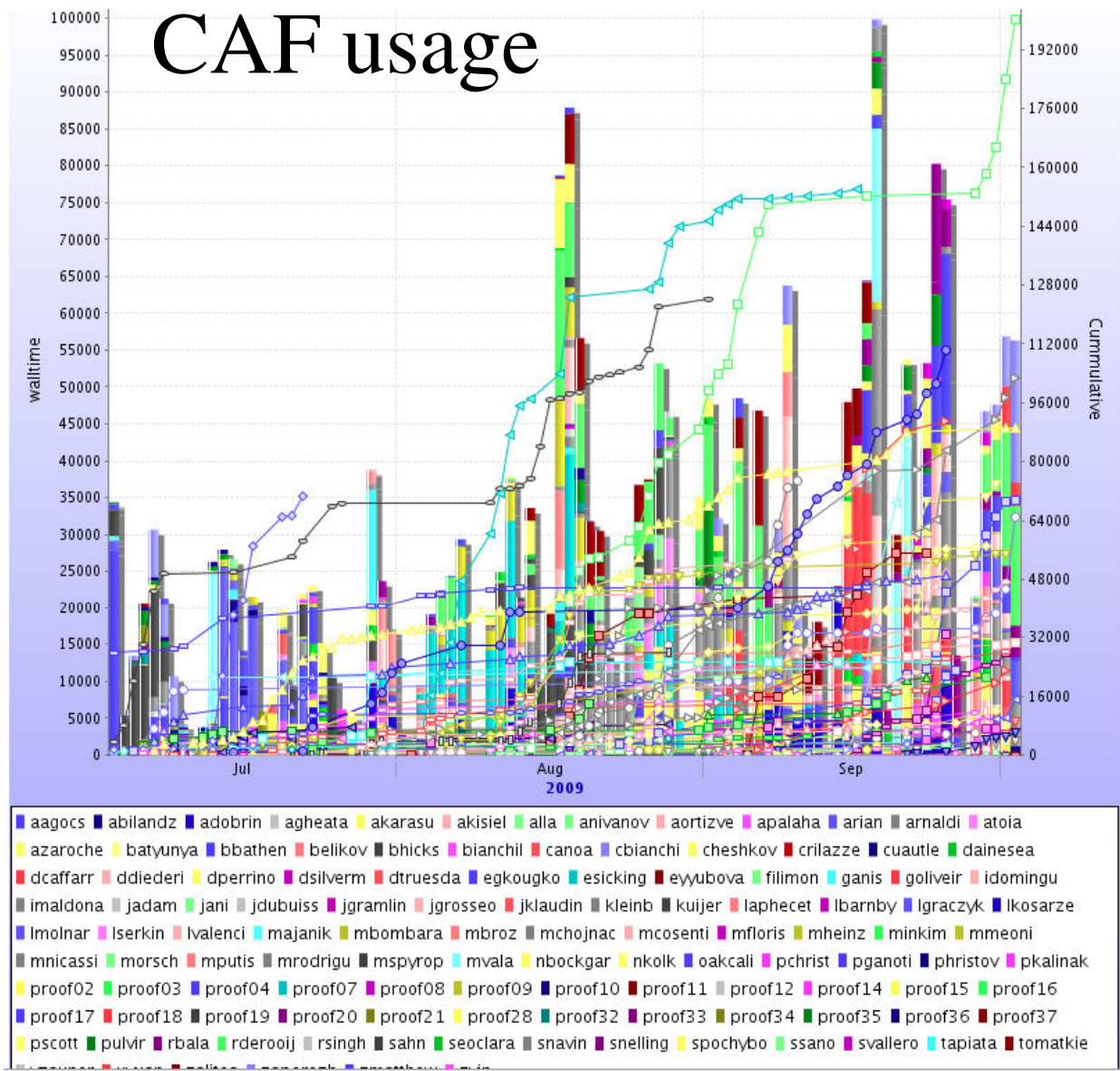
- MC run in all sites, data replicated in 3 SE (xrootd enabled)
  - Only run if needed (no “keeping processors warm” strategy)
  - Mainly first physics type of production
- Raw data reconstruction (cosmic, calibration, beam tests)
  - At T0 exclusively, several passes
  - Selected data at CAF
- Analysis
  - Train on the Grid for all major production in 2009
  - End user on CAF and Grid, AOD is the preferred input

# Jobs status



# Running jobs per user





Resource to be increased x3 by end of November (300 cores)



# Analysis trains

Production info				Jobs status			
Production	Description	Status	Completion rate	Total	Done	Running	Waiting
LHC09b6AOD	LHC09b6: standard AODs with MC info, AOD tags and pyxsec_hist	Completed		0	0		
LHC09b5AOD	LHC09b5: standard AODs with MC info, AOD tags and pyxsec_hist	Completed	100%	5	5		
LHC09b4AOD	LHC09b4: standard AODs with MC info, AOD tags and pyxsec_hist	Completed	97%	257	251		
LHC09b3AOD	LHC09b3: standard AODs with MC info, AOD tags and pyxsec_hist	Completed	98%	128	126		
LHC09b2AOD	LHC09b2: standard AODs with MC info, AOD tags and pyxsec_hist	Completed	98%	257	254		
LHC08d6	LHC08d6: standard AODs with MC info, AOD tags	Completed	100%	110	110		
LHC09a6AOD	LHC09a6: standard AODs with MC info, AOD tags and vertexing HF delta AODs	Completed	0%	18			18
LHC09a5AOD	LHC09a5AOD: standard AODs with MC info, AOD tags and vertexing HF delta AODs	Completed	98%	218	215		
LHC09a4AOD	LHC09a4AOD: standard AODs with MC info, AOD tags and vertexing HF delta AODs	Running	49%	3446	1709	264	444

# Software: AliRoot

- Deployment of the online-offline QA framework
- PROOF based parallel reconstruction operational
- Validation and tuning of the offline framework with cosmic data
- Optimization of memory and CPU consumption
- Design of multi-threaded reconstruction
- Validation of the GEANT4 and FLUKA transport models

# Services: CREAM & SL5

- CREAM CE in 50% of the ALICE sites
- dual submission CREAM/WMS still the norm
- All ALICE software has been validated for SL(C)5
- The production (RAW and MC) and user analysis is already running on SL(C)5 resources wherever available

SITE	SITUATION
CERN	2 VOBOXES in SLC4 and one in SLC5, submitting to both types of WNs
KISTI	1 VOBOX in SL4 and 1 in SL5 (CREAM VOBOX), submitting to both types of WNs
SUBATECH	2 VOBOXES in SL4, small cluster available in SL5 (behind CREAM)
RAL	2 VOBOXES in SL4, cluster available in SL5 (behind LCG-CE)
ITEP and SPBSu	Full site migrated to SL5, but only one VOBOX available
KALKOTA	1 VOBOX in SL4 and 1 in SL5 (CREAM VOBOX), submitting to both types of WNs
IPNL, IHEP RRC-KI and GRIF_DAPNIA	Full site migrated to SL5 BUT the VOBOX (still SL4)
IPNO	VOBOX migrated to SL5 but not the WNs

# Milestones

- New milestones
  - MS-130 Jun 09: CREAM CE deployed at all sites ← 50%
  - MS-131 26 Jun 09: AliRoot release ready for data taking ← done
  - MS-132 14 July 09: release and deployment of AliEn v2-17 ← done