

# MoEDAL NTD Detector

## Etching Tests at Bologna

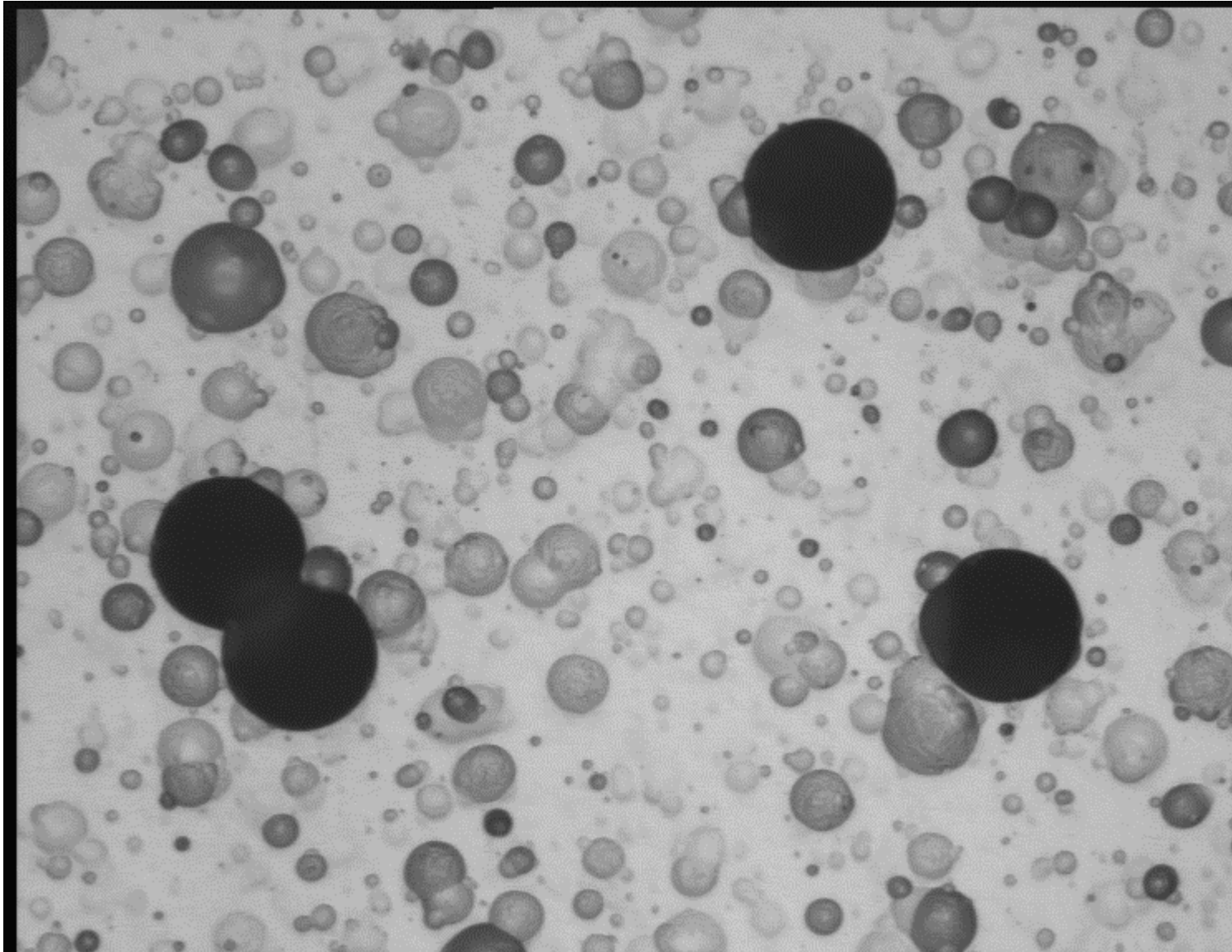
### LAST ETCHING TESTS

Etching with KOH «scaglie»: 6N KOH + 20% alcohol – 40° C – 10 h

Etching with KOH «scaglie»: 6N KOH + 20% alcohol – 50° C – 8 h

6N KOH «scaglie» + 20% alc. Denat. «strong» - 40°C – 10 h

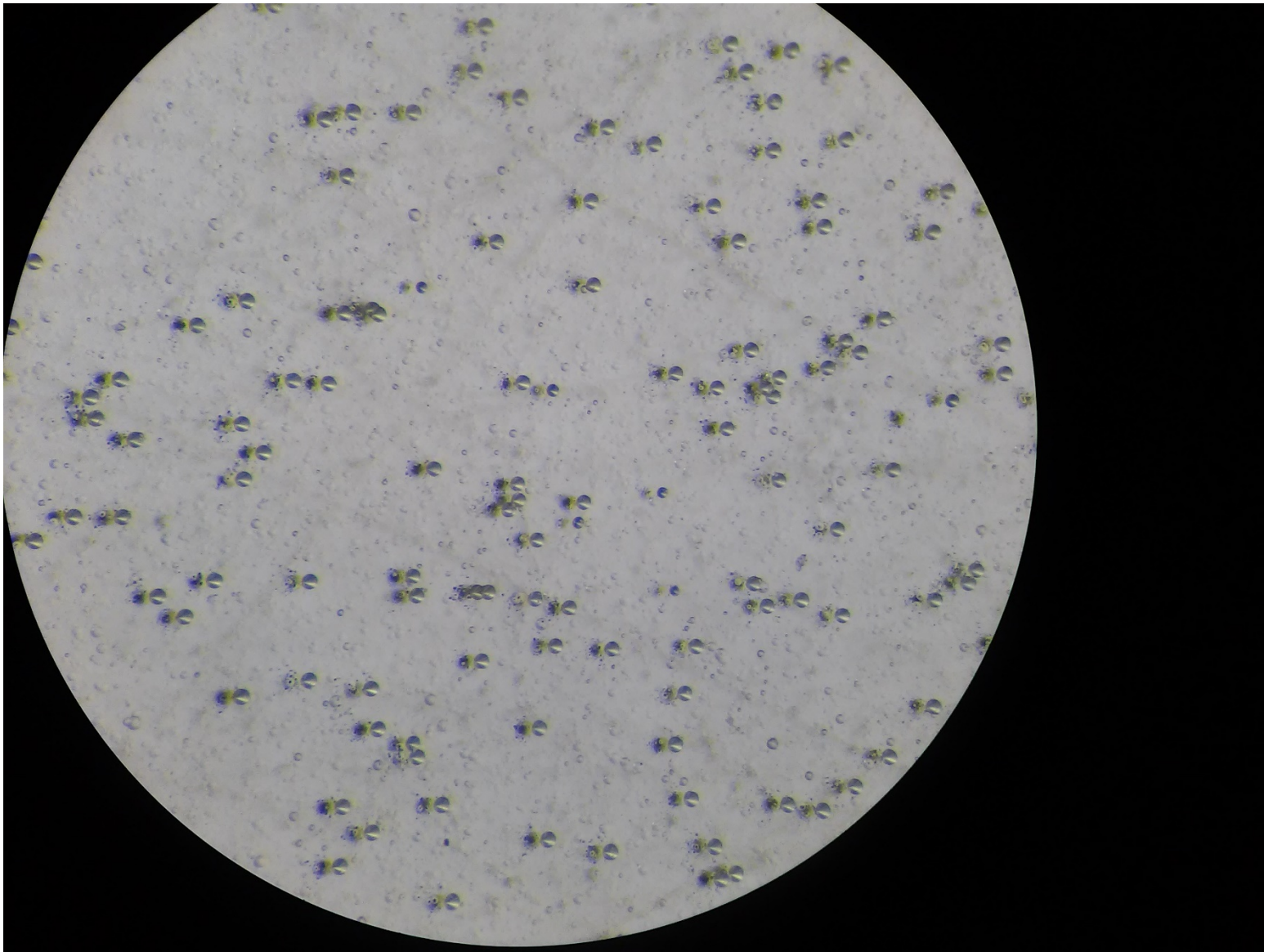
Sample PR4-36- Exposed in MoEDAL and to Pb2016



ELBEK - 10X -20X

6N KOH «scaglie» + 20% alc. Denat. «strong» - 40°C – 10 h

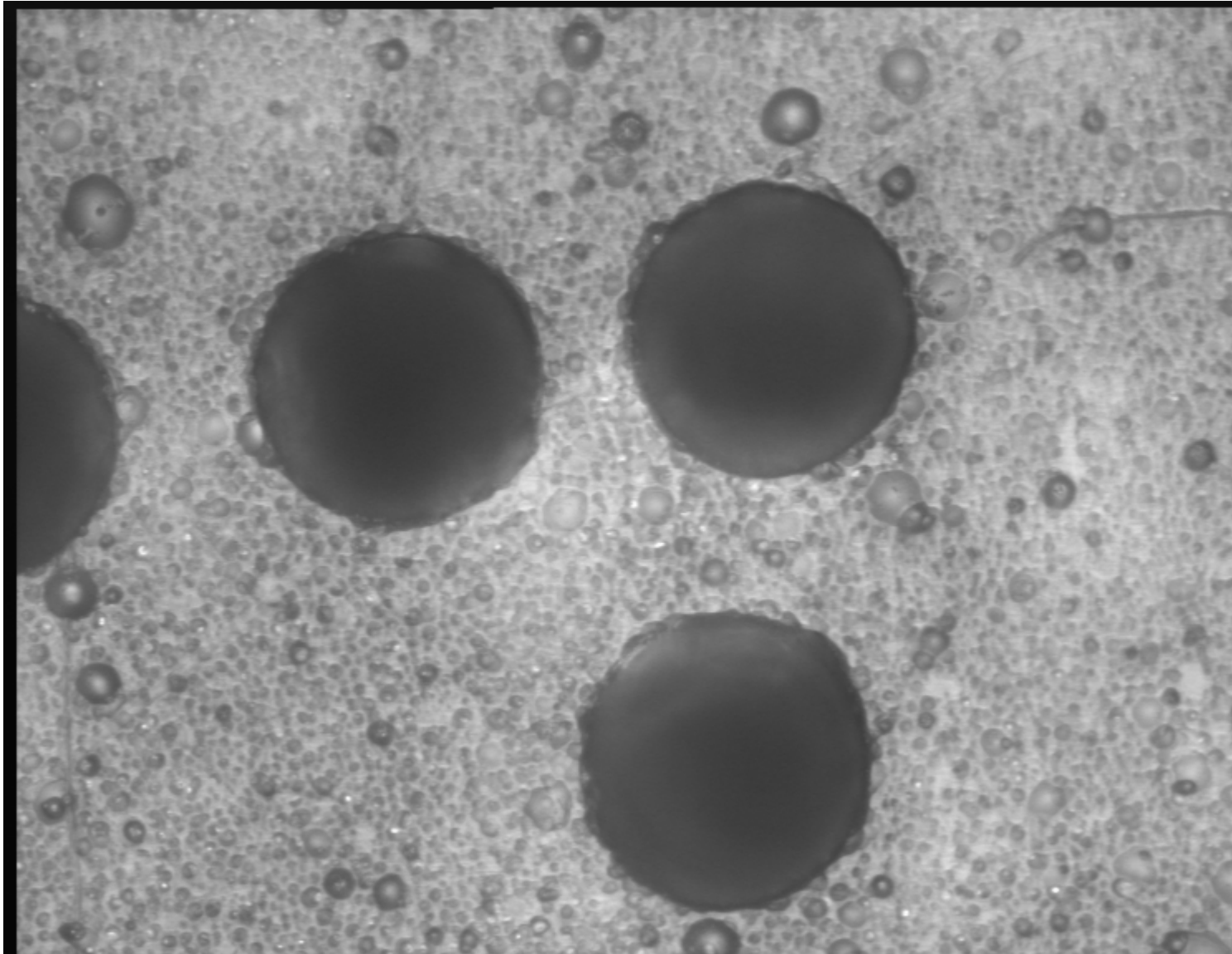
Sample PR4-36- Exposed in MoEDAL and to Pb2016



STEREO – 10X – 4X

6N KOH «scaglie» + 20% alc. Denat. «strong» - 50°C – 10 h

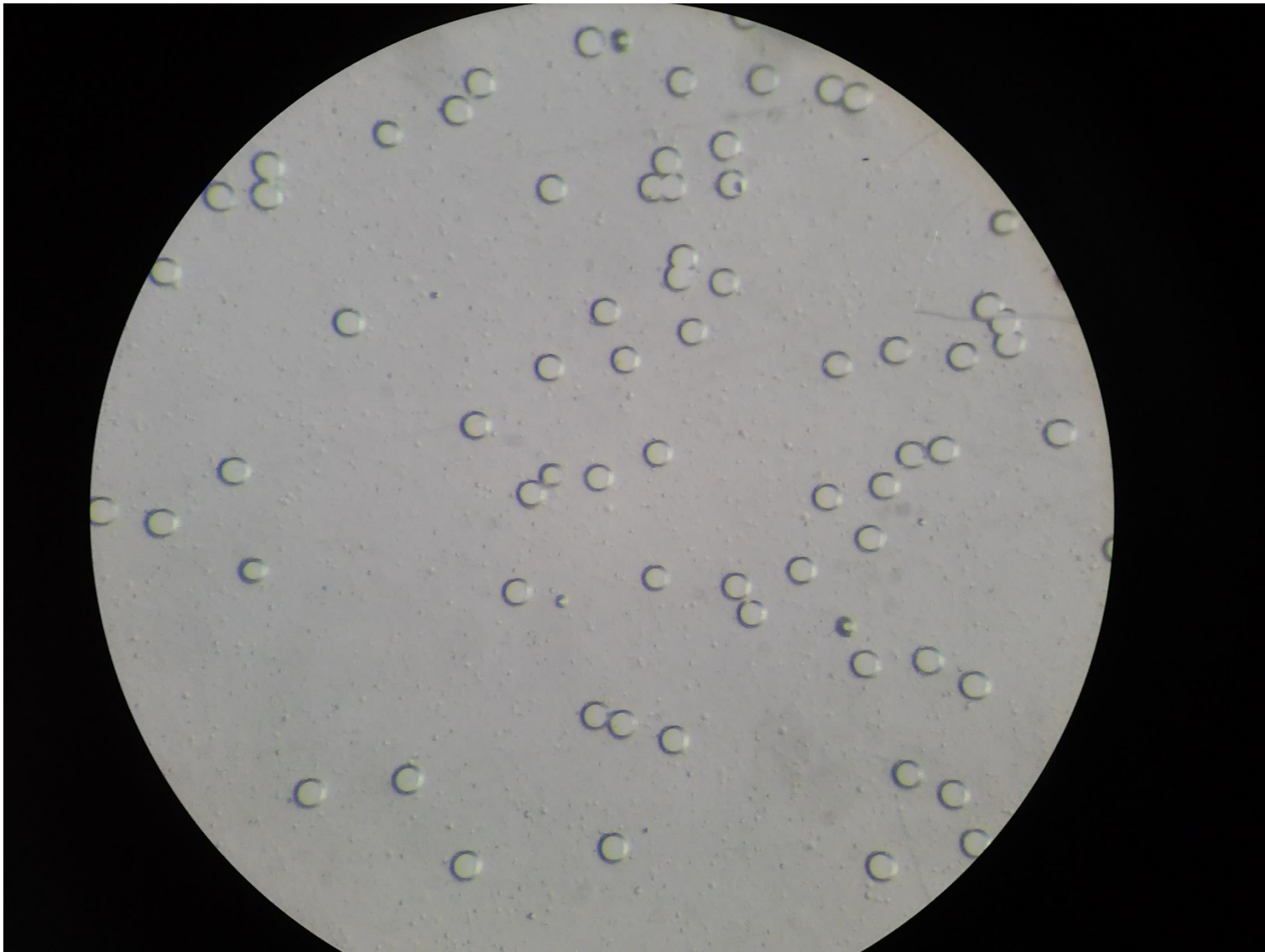
Sample PR4-29- Exposed in MoEDAL and to Pb2016



ELBEK – 10X – 20X

6N KOH «scaglie» + 20% alc. Denat. «strong» - 50°C – 10 h

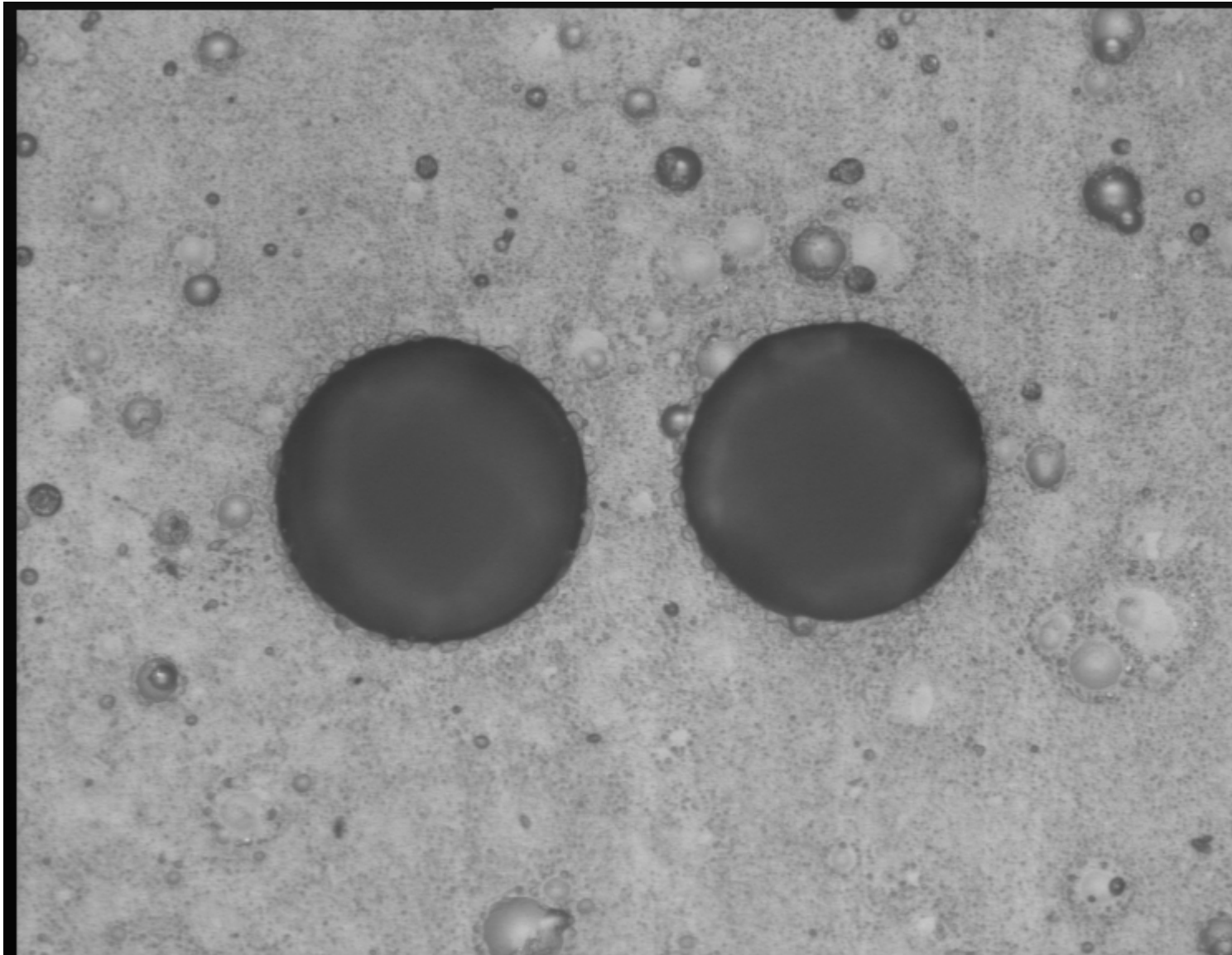
Sample PR4-29- Exposed in MoEDAL and to Pb2016



STEREO – 10X – 4X

6N KOH «scaglie» + 20% alc. Denat. «strong» - 50°C – 10 h

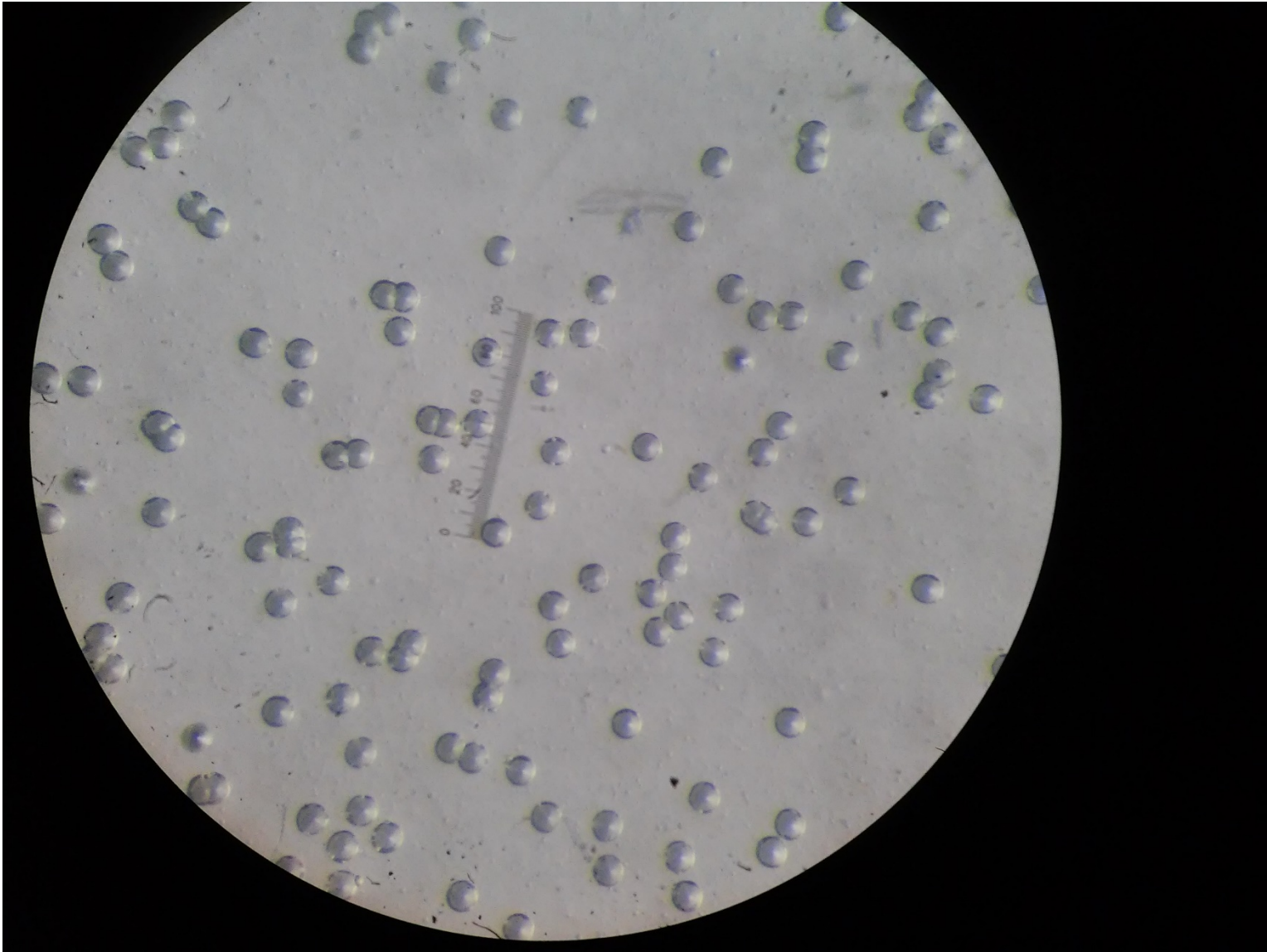
Sample PR4-34- Exposed in MoEDAL and to Pb2016



ELBEK – 10X – 20X

6N KOH «scaglie» + 20% alc. Denat. «strong» - 50°C – 10 h

Sample PR4-34- Exposed in MoEDAL and to Pb2016



STEREO – 10X – 4X