



# WG5: report and STSM rules

Magdalena Sławińska,

Chara Petridou

# WG5 leaders:

- Magdalena Sławińska
- [magdalena.slawinska@cern.ch](mailto:magdalena.slawinska@cern.ch)
- Assistant Professor at IFJ PAN (Kraków, Poland)
- ATLAS member since 2013
- research interests: Higgs couplings to polarised W bosons, di-Higgs phenomenology
- convenership activities (LHCHXSWG HH group), supervision of students



- Chara Petridou
- [chariclia.petridou@cern.ch](mailto:chariclia.petridou@cern.ch)
- Professor in Particle Physics at AUTH (Aristotle University of Thessaloniki, Greece)
- Team leader of the Thessaloniki ATLAS group (since 1995 an ATLAS Institute)
- Research interests: Indirect searches for New Physics, Vector Boson Scattering, Higgs couplings to bosons
- Active in WZ and ZZ analyses
- Supervision of MSc and PhD students



## WG5: Inclusiveness Policies

main aim	Full inclusion of researchers that, for geographical or sociological reasons, might need specific policies to get on the same footing as the rest of the community.
Tasks & deliverables	<ul style="list-style-type: none"><li>• ECI promotion through STSM and as managers of the Action</li><li>• counteract gender imbalances, also promoting women in manager positions</li><li>• support members of COST ICT through STSM and organisation of events there</li></ul>
milestones	<ul style="list-style-type: none"><li>• Review of the effectiveness of inclusion policies every six months</li><li>• organisation of topic discussions on inclusiveness issues during the yearly meetings, the MTSM and the final conference</li></ul>

From Pietro's January talk

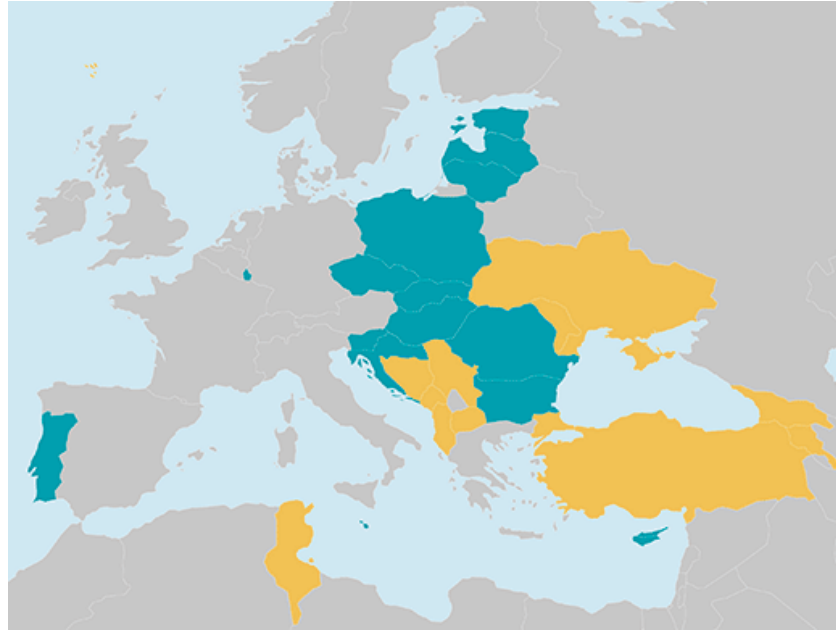
ECI is an individual who is within a time span of up to 8 years from the date they obtained their PhD/doctorate (full-time equivalent).

# Inclusiveness in VBSCan

- geographical
- age
- gender
- ...

VBSCan aims at promoting inclusiveness targeted researchers in managers positions within VBSCan, organisation of STSMs and networking events.

# COST Inclusiveness targeted countries



The Member States currently eligible for Widening support are:

Bulgaria, Croatia, Cyprus, Czech Republic, Estonia, Hungary, Latvia, Lithuania, Luxembourg, Malta, Poland, Portugal, Romania, Slovakia and Slovenia

The Associated Countries currently eligible for Widening support are  
(subject to valid association agreements of third countries with Horizon 2020):

Albania, Armenia, Bosnia and Herzegovina, Faroe Islands, Former Yugoslav Republic of Macedonia, Georgia, Moldova, Montenegro, Serbia, Tunisia, Turkey and Ukraine

# Inclusiveness in VBSCan

- ECI researchers

Early Career Investigators: PhDs within 8 years of obtaining a PhD degree (not PhD students!)

- promoting gender balance

# Inclusiveness in VBSCan

- **Opening report:**
  - 18 countries participating, of which 4 are from inclusiveness targeted
  - 2 out of 10 WG leaders from inclusiveness targeted countries
  - gender structure in the WG leaders: 50%/50%
  - The first VBSCan conference is held in Croatia

**A very good starting point!**

# Could we include more countries?

- COST Member States and Cooperating States:

**Austria**, Belgium, **Bosnia and Herzegovina**, **Bulgaria**, Croatia, **Cyprus**, Czech Republic, Denmark, **Estonia**, Finland, France, Germany, Greece, **Hungary**, **Iceland**, Ireland, Israel, Italy, **Latvia**, **Lithuania**, **Luxembourg**, **Malta**, **Montenegro**, The Netherlands, **Norway**, Poland, **Portugal**, **Romania**, **Serbia**, **Slovakia**, Slovenia, Spain, Sweden, Switzerland, **Turkey**, United Kingdom, **the former Yugoslav Republic of Macedonia**

- COST Near Neighbour Countries:

Albania, Algeria, **Armenia**, Azerbaijan, Belarus, Egypt, Georgia, Jordan, Lebanon, Libya, Moldova, Morocco, the Palestinian Authority, Russia, Syria, Tunisia and **Ukraine**.

- **not included in VBSCan**
- Colours mark the participation in **ATLAS** and **CMS** based on official web pages



# In this talk

Looking into the future, I will present today our main tool – STSMs

- detailed description can be found in
  - the COST Vademecum  
<http://www.cost.eu/download/COSTVademecum>
  - VBSCan STSM rules google document  
[https://docs.google.com/document/d/1RGs-NriPH3D3W\\_3kU8kExzos-p5uxzhcjaMOsdRla5g/edit](https://docs.google.com/document/d/1RGs-NriPH3D3W_3kU8kExzos-p5uxzhcjaMOsdRla5g/edit)

# STSM (=Short Term Scientific Missions)

- Institutional visits that should contribute to:
  - the research coordination and capacity building objectives of the COST Action,
  - learning techniques, obtaining data, etc.
- Have a duration of 5 - 90 (up to 180 in case of ECIs) days
- COST reimburses travel, hotel and meals (flat rates: 120Eur/night, 2x20Eur/day, resp.) up to Eur 2500 (3500 in case of ECIs) in total

# Who can apply?

- a PhD Student or postdoctoral fellow or a person employed by, or affiliated to, an Institution or legal entity performing scientific research.

<b>Applicant in a Home Institution</b>	<b>To perform a STSM in a Host Institution</b>
<b>Located in a Participating COST Full Member / COST Cooperating Member</b>	In another Participating COST Full Member / COST Cooperating Member
	In an COST Partner Member
	In an Approved Non-COST Country Institution
	In EU Commission, Bodies, Offices and Agencies
	In an Approved European RTD Organisation
<b>Located in an Approved NNC institution</b>	In an Approved International Organisation
	In a Participating COST Full Member / COST Cooperating Member
<b>Located in an Approved European RTD Organisation</b>	In a Participating COST Full Member / COST Cooperating Member

# How to apply

- Applications should be submitted electronically at <http://www.cost.eu/STSM>.
- The online form requires:
  - STSMs details (dates, Home and Host Institute of the Candidate),
  - academic details of the candidate,
  - a motivation letter,
  - a short workplan summary,
  - financial details (see Section Funding for the rules),
  - a short letter of invitation from a senior researcher affiliated to the Host institution,
  - a letter of support from a relevant Working Group leader
  - a letter of support from the Home Institute.

Before applying, a candidate is advised to contact a researcher affiliated at a Host Institution and a working group leader relevant for the planned work. The researcher affiliated at a Host Institution should agree upon the program of the STSM. The working group leader should be asked to review the plan and suggest the format of the scientific report.

# The procedure (for applicants)

- The documents should be sent to <https://e-services.cost.eu/stsm/apply/> and to the STSM coordinator
- pre-approval by the VBSCan STSM committee within a month
- book travel
- Complete a STSM
- Present a final report within a month after completing a STSM
- approval by the VBSCan STSM committee within a month and reimbursement of expenses

# The approval procedure (VBSCan)

- The reviewing procedure will be adapted throughout the programme. At the start of the action, applications are accepted continuously and are reviewed within typically ~4 weeks.
- Applications from ESRs and strengthening inclusiveness targeted countries will be favoured (either staying there or coming from there).
- The STSM Coordinator has the right to revise the grant amount (decrease or increase) before approving the mission.
- Each time an approval from a relevant WG leader/ deputy leader and a senior researcher from the Host Institute is required.
- Approval happens if the (simple) majority of the STSM Committee votes in favour (no explicit vote means consent)

# STSM grant approval

- STSM committee: WG4+WG5 leaders and deputy leaders + 4 up to members from the management committee
- a simple majority vote is needed to accept a STSM (we assume no vote within 2 weeks is a consent)
- we will favour applications from ECIs, inclusiveness targeted countries as Home or Host Institutions; gender balance will be taken into account
- the decision of (pre-)approving the grant is issued by the STSM Committee within 4 weeks from submitting the application.

# STSM final report

- depending on the planned outcome: a written summary, code + documentation, presentation at a WG meeting, paper
- the form should be decided at pre-approval of the STSM
- additionally we ask successful applicants for a 300 words summary for general public that will be used for our newsletter



# **BACKUP SLIDES**

# WG5: Inclusiveness Policies

Magdalena Sławińska

# Short Term Scientific Missions (STSM)

from <http://www.cost.eu/download/COSTVademecum>

- Short Term Scientific Missions (STSM) are institutional visits aimed at supporting individual mobility, strengthening existing networks and fostering collaboration between individuals. A STSM should specifically contribute to the research coordination and capacity building objectives of the COST Action, whilst at the same time allowing those partaking in the missions to learn new techniques, gain access to specific data, instruments and / or methods not available in their own institutions / organisations.
- STSM applicants must be engaged in an official research programme as a PhD Student or postdoctoral fellow or can be employed by, or affiliated to, an institution, organisation or legal entity which has within its remit a clear association with performing research.

# STSMs - eligibility conditions

Applicant in a Home Institution	To perform a STSM in a Host Institution
<b>Located in a Participating COST Full Member / COST Cooperating Member</b>	In another Participating COST Full Member / COST Cooperating Member
	In an COST Partner Member
	In an Approved Non-COST Country Institution
	In EU Commission, Bodies, Offices and Agencies
	In an Approved European RTD Organisation
<b>Located in an Approved NNC institution</b>	In an Approved International Organisation
<b>Located in an Approved European RTD Organisation</b>	In a Participating COST Full Member / COST Cooperating Member
	In a Participating COST Full Member / COST Cooperating Member

one cannot go in her/his own institute nation in STSM

# STSMs must respect criteria:

1. They must have a minimum duration of 5 days.
2. They must have a maximum duration of 90 days.
3. STSM need to be carried out in their entirety within a single Grant Period and always within the Action's lifetime.
  - Specific **additional provisions** have been made possible to encourage the participation of **Early Career Investigators (ECI)** in STSM. To qualify for these specific provisions, the following conditions apply:
    1. The mission must have a minimum duration of 91 days.
    2. The mission must have a maximum duration of 180 days.
    3. STSM performed by ECI need to be carried out in their entirety within a single Grant Period and always within the Action's lifetime.

# What can be financed within STSMs

A STSM Grant is a contribution to the **overall travel, accommodation and meal expenses** of the Grantee. The calculation of the financial contribution for each STSM must respect the following criteria:

- Up to a maximum of **EUR 2 500 in total** can be afforded to each successful STSM applicant;
- Up to a maximum of **EUR 160 per day** can be afforded for accommodation and meal expenses.

For **ECIs**, the calculation for an increased financial contribution must respect the following criteria:

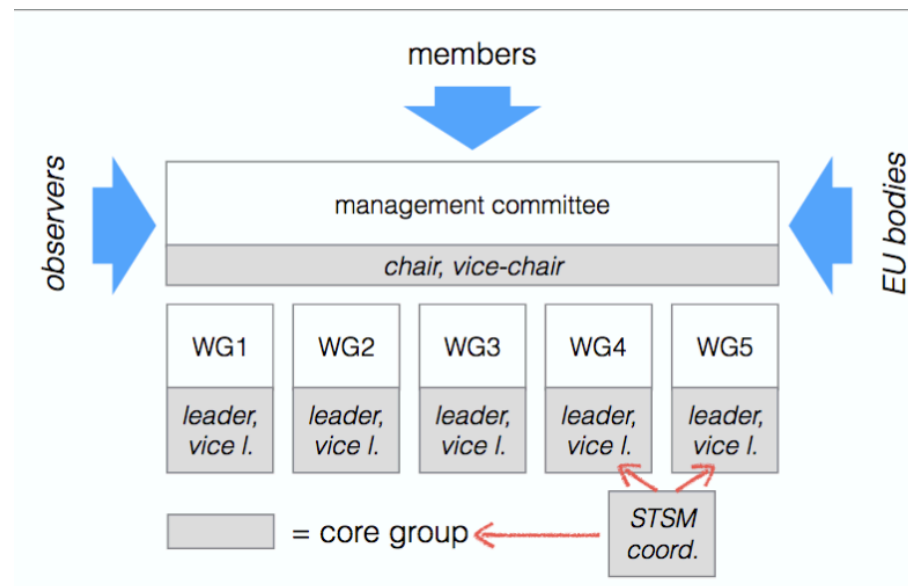
- Up to a maximum of **EUR 3 500 in total** can be afforded to ECIs for missions with a duration of between 91 and 180 days;
- Up to a maximum of **EUR 160 per day** can be afforded for accommodation and meal expenses.

# STSMs further conditions

- Once the STSM has been completed, the Grantee must submit a scientific report to the Action Chair (or Vice-Chair if the Action Chair is affiliated to the Grant Holder Institution), the appointed STSM Coordinator / Committee and to the Host institution.
- Payment of the Grant is subject to the scientific report being approved by the Action Chair (or Vice-Chair if the Action Chair is affiliated to the Grant Holder Institution) and / or the appointed STSM Coordinator / Committee and a senior researcher affiliated to the Host institution. Written approval of the scientific report must be sent to the Grant Holder for archiving purposes.

# STSMs: How to apply?

- online through <https://e-services.cost.eu/stsm/apply/>
- requires STSMs details, academic details of the candidate, workplan summary, and financial details
- evaluation



from Pietro's talk