



# NA64 status and plans

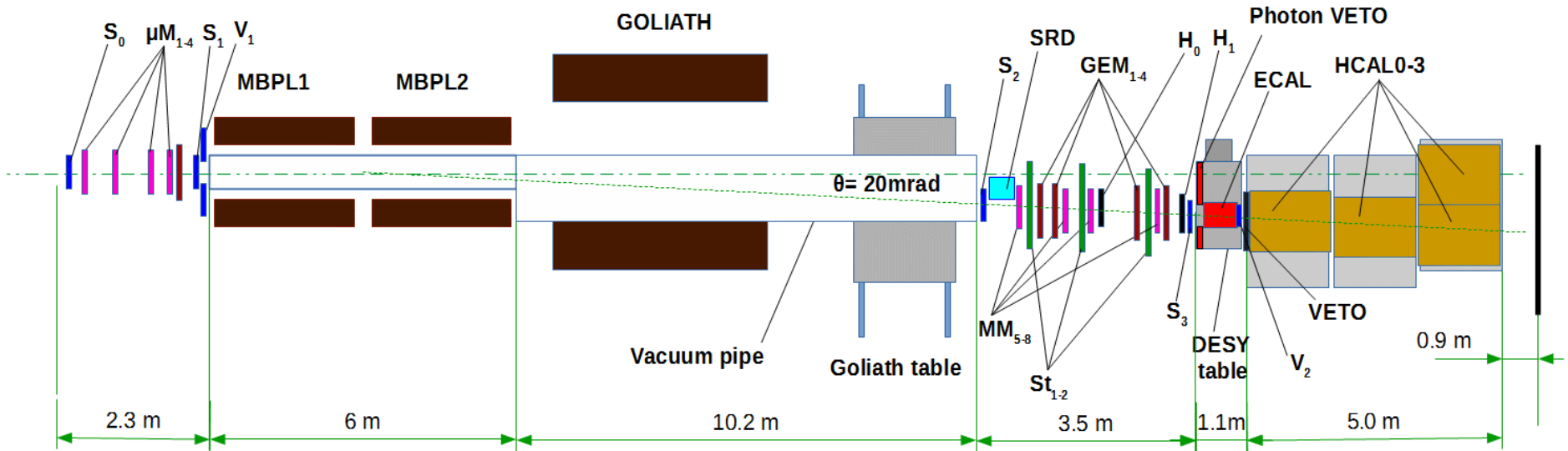


*Vladimir Poliakov*  
*Institute for High Energy Physics, Protvino, Russia*

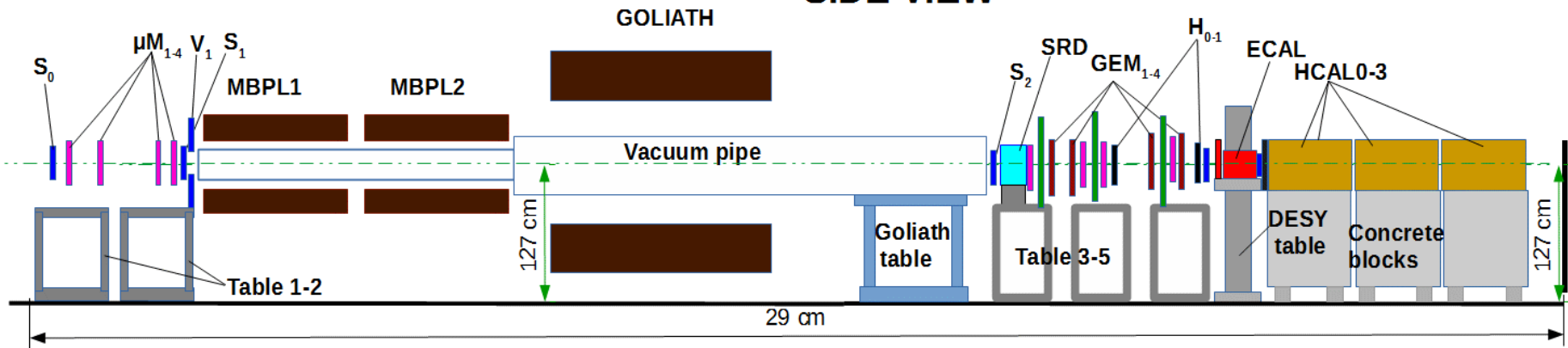
# NA64 setup, invisible mode



TOP VIEW



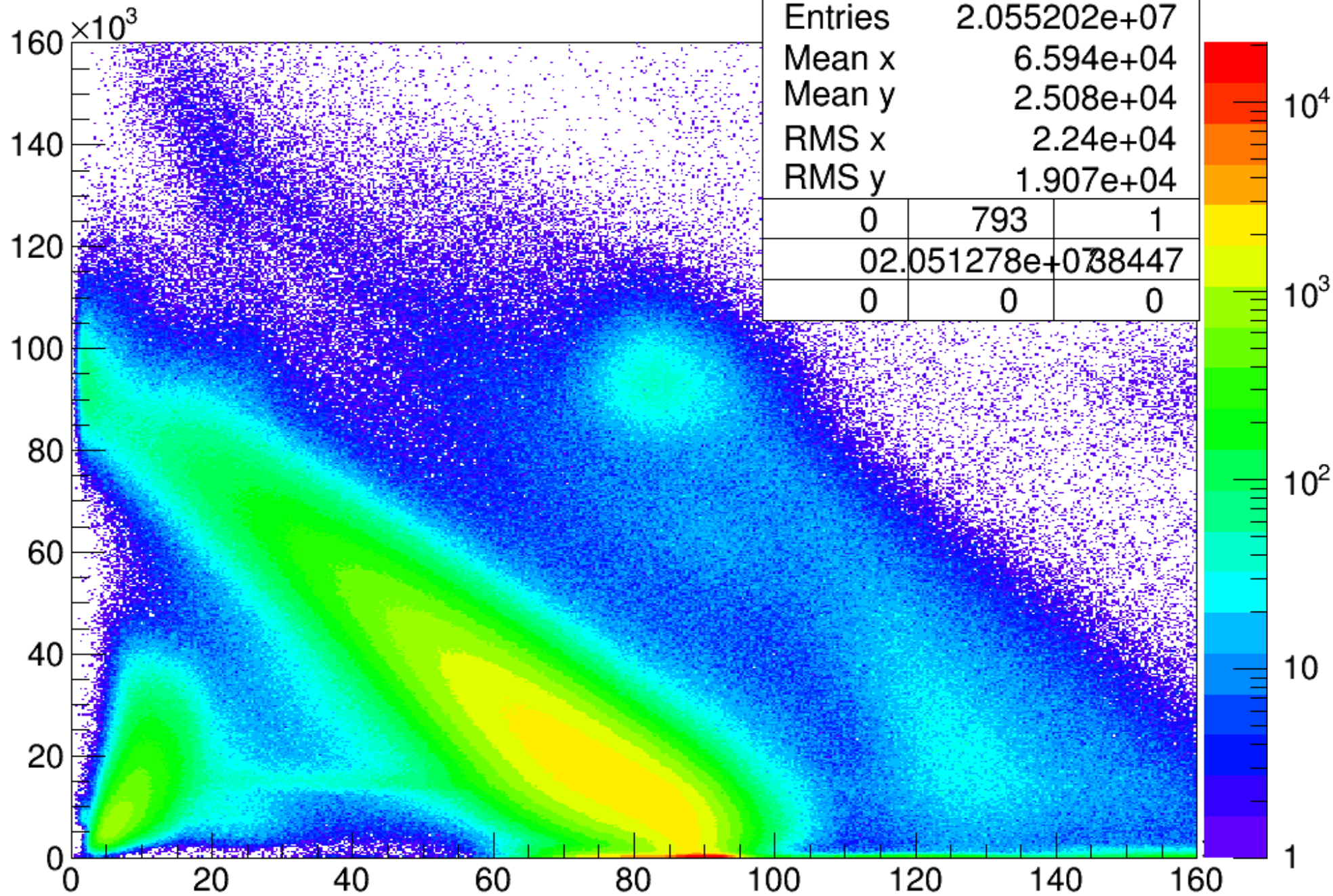
SIDE VIEW



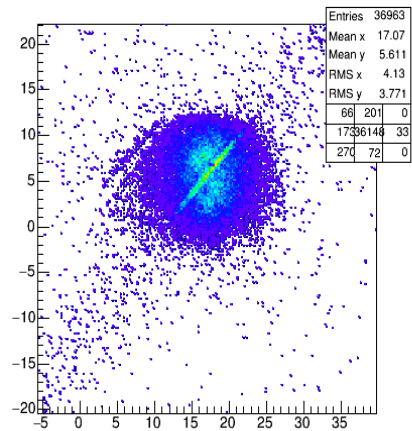
# Invisible mode



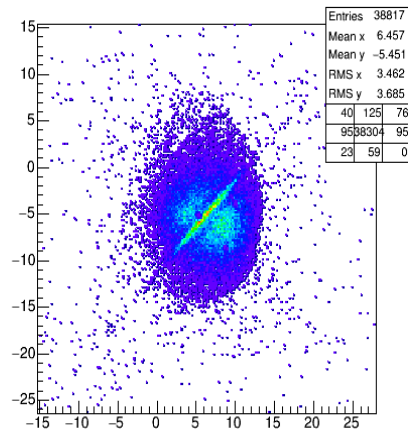
- Total accumulated electrons  $\sim 5.3 \times 10^{10}$
- Accumulated electrons  $\sim 2 \times 10^9$  with intensity  $\sim 3 \times 10^6$ , check background level;
- Accumulated electrons  $\sim 1.7 \times 10^{10}$  with intensity  $\sim 3.5 \times 10^6$
- Accumulated electrons  $\sim 2.4 \times 10^{10}$  with intensity  $\sim 5.5 \times 10^6$
- Accumulated electrons  $\sim 1.0 \times 10^{10}$  with intensity  $\sim 7.5 \times 10^6$  (16hours)



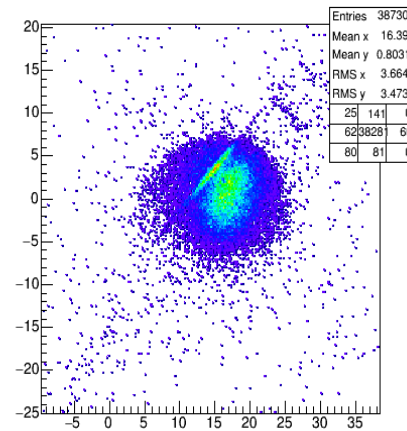
MM01XY



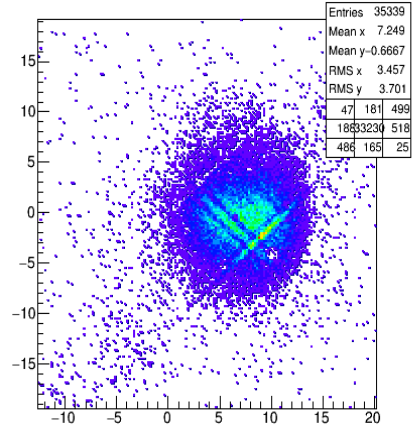
MM02XY



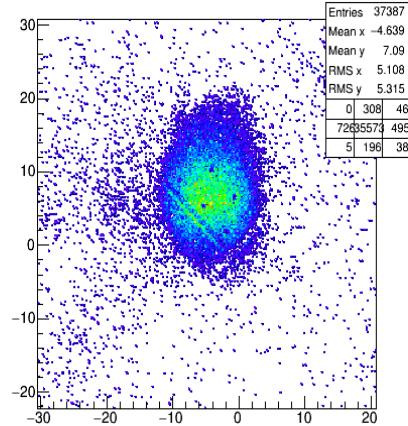
MM03XY



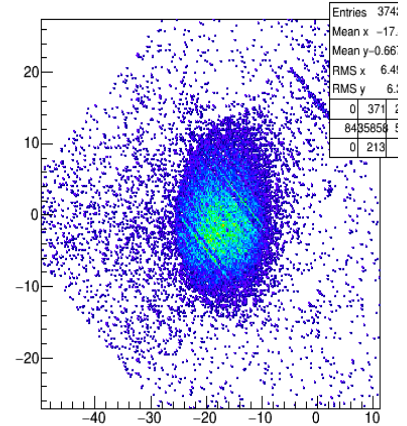
MM04XY



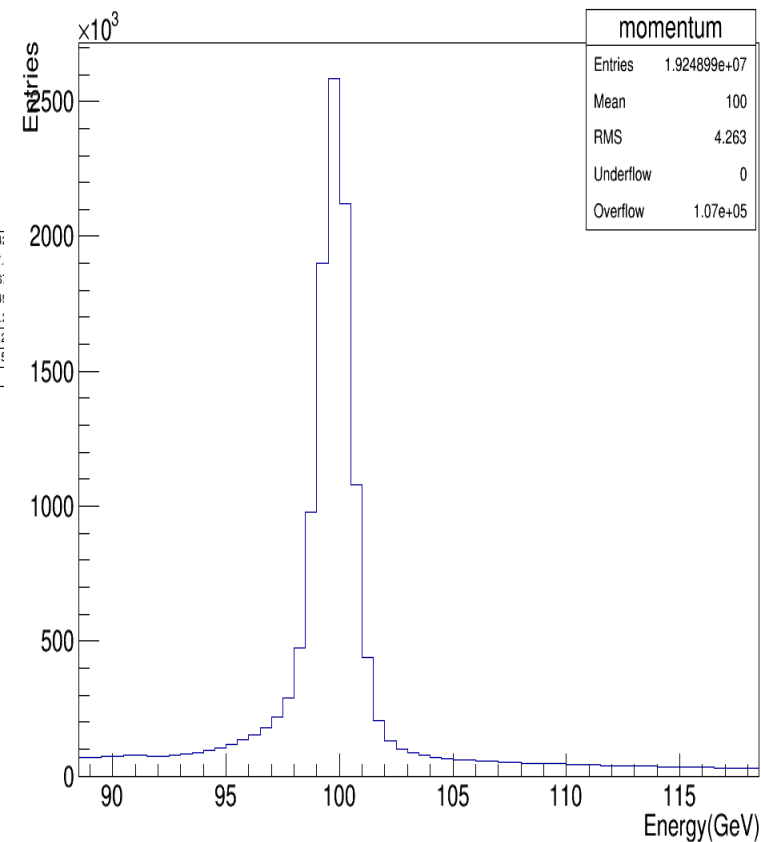
MM05XY



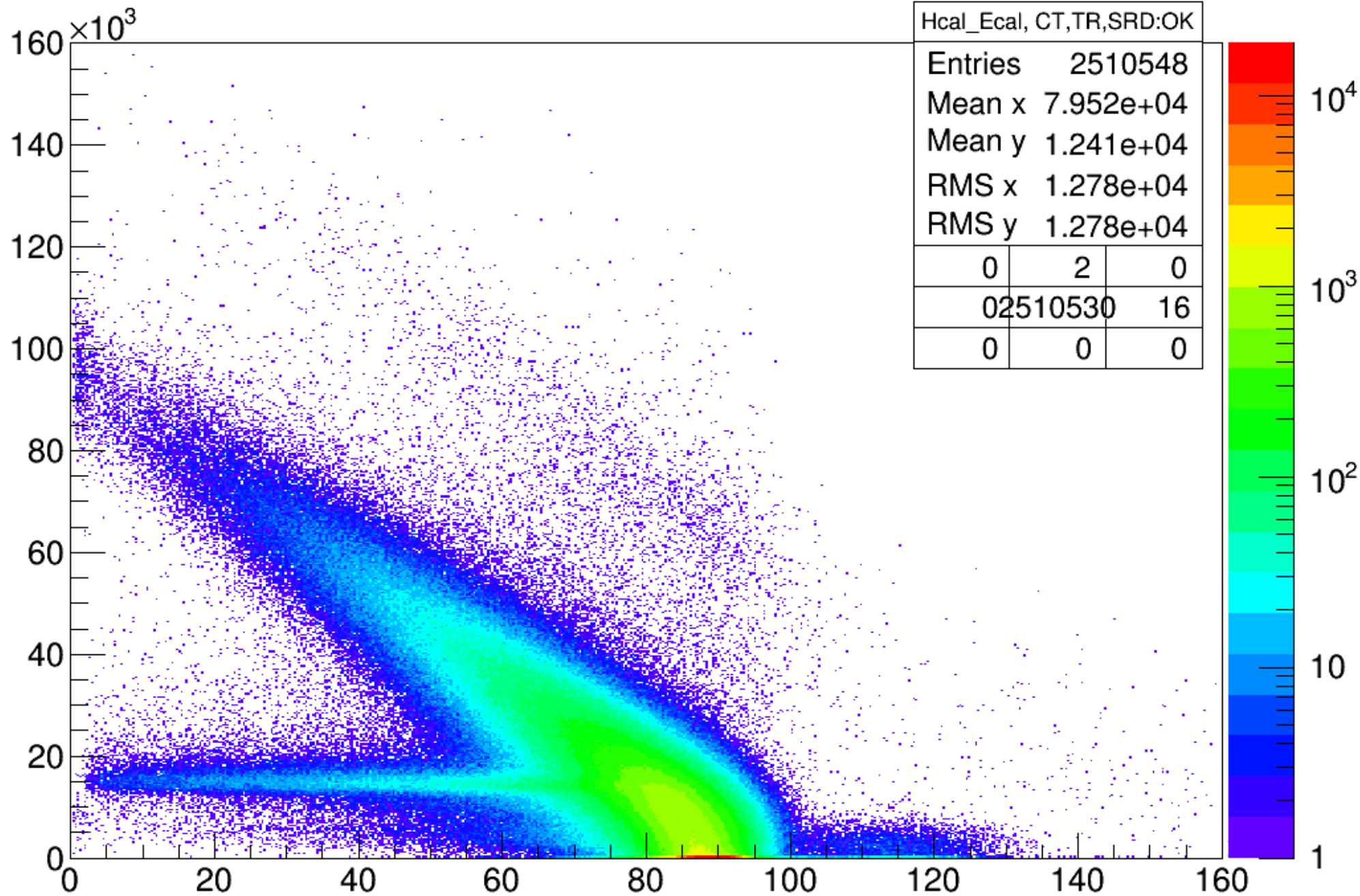
MM07XY



Reconstructed momentum for electron









# Plans, visible mode



- Calibration of W calorimeter; trigger tuning; check all detectors after MD;
- Start data taking with intensity  $\sim 3 \times 10^6$ , accumulate  $\sim 2 \times 10^9$  electrons, check background level;
- Accumulate  $\sim 4 \times 10^{10}$  electrons with  $\sim 4 \div 5 \times 10^6$  intensity;
- Accumulate  $\sim 2 \times 10^{10}$  electrons with  $\sim 7 \times 10^6$  intensity;