

ECR status

Linac4 connection

Partial Disassembly of Linac2: CPS-LJ-EC-0003

Connection of the Linac 4 to the LT.BHZ20: CPS-LJ-EC-0002

LBE line upgrade for the Linac4: CPS-LJ-EC-0005



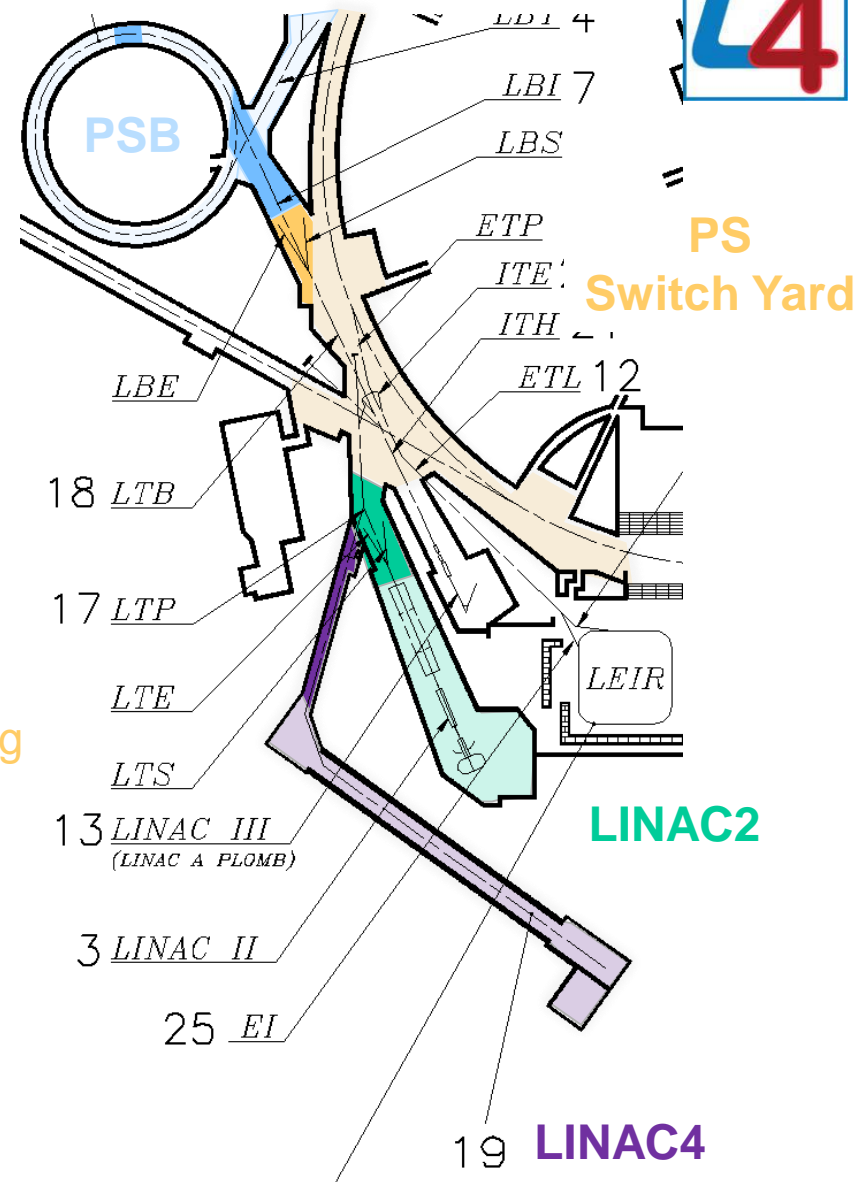
Layout overview

PSB Upgrade
LIIU Project

From Linac4 to PSB



- **Linac4**
 - Complete Linac4 transfer line (L4T)
- **Linac2**
 - Partial dismantling of Linac2
 - Connection of the Linac4 to BHZ20
- **PS Switch Yard**
 - New LBE line (including the handling system and shielding)
- **PSB**
 - Upgrade of the injection line (BI)
 - Upgrade of the injection period 01
 - New tune pick-ups (3L1)





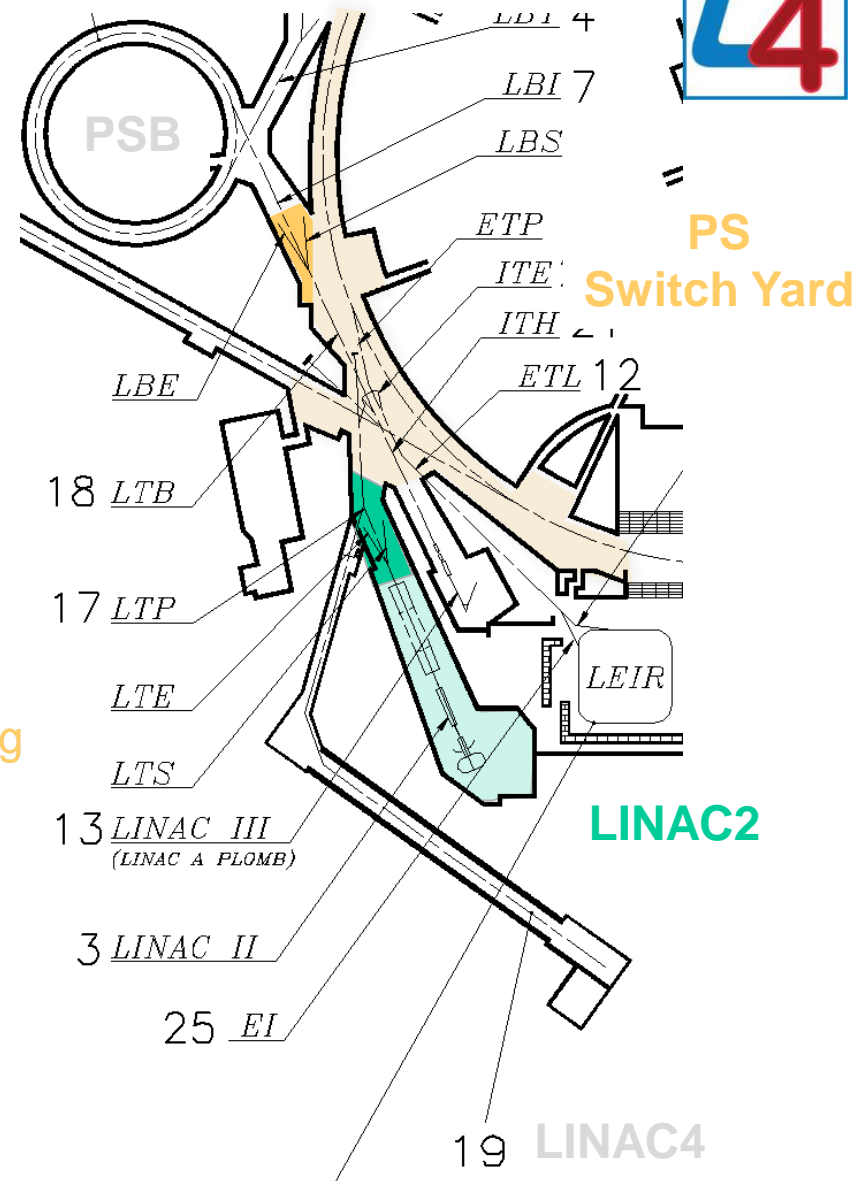
Layout overview

PSB Upgrade
LIIU Project

From Linac4 to PSB



- **Linac4**
 - Complete Linac4 transfer line (L4T)
- **Linac2**
 - Partial dismantling of Linac2
 - Connection of the Linac4 to BHZ20
- **PS Switch Yard**
 - New LBE line (including the handling system and shielding)
- **PSB**
 - Upgrade of the injection line (BI)
 - Upgrade of the injection period 01
 - New tune pick-ups (3L1)





CERN
CH-1211 Geneva 23
Switzerland

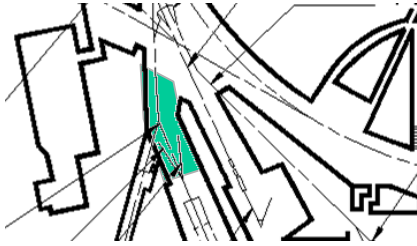


CPS

EDMS NO.	REV.	VALIDITY
1688400	0.2	DRAFT

REFERENCE
CPS-LJ-EC-0003

Date: 2017-04-11



ENGINEERING CHANGE REQUEST

Partial Disassembly of Linac2

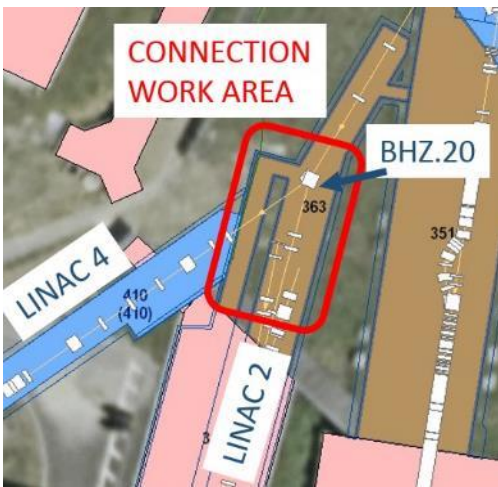
BRIEF DESCRIPTION OF THE PROPOSED CHANGE(S):

This document concerns the disassembly of Linac2 transfer line from the end of the DTL cavities, DTL cavities not included, up to the LT.BHZ20 magnet to allow the connection of Linac4 to PSB transfer line.

Remaining actions:

- Assign a budget code. **Klaus Hanke**
- Release documents in the references, i.e. RP study (ref[2]). **J. Vollaire**





ENGINEERING CHANGE REQUEST

Connection of the Linac4 to the LT.BHZ20

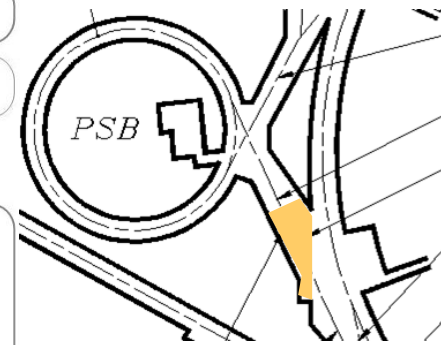
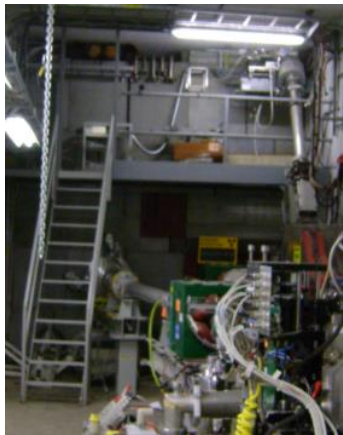
BRIEF DESCRIPTION OF THE PROPOSED CHANGE(S):

This document concerns the Linac4 connection with the PSB injection transfer line, LT, through the LT.BHZ20 magnet. Prior to start the activities detailed here the partial disassembly of Linac2 described on the ECR CPS-LJ-EC-0003 has to be made leaving the working area free to access to 363/R-402 and install new items like the chicanes.



Remaining actions:

- Assign a budget code. **Klaus Hanke**
- Update the information in the chapter 4.1 concerning to the CE works, i.e. “château” shielding. **A. Martinez & J-L Grenard**
- Update the 3D model figures. **J-P Corso** (promised for 10th May)
- Release the documents included in the references:
 - RP study (ref[2]). **J. Vollaire**
 - Connexion Linac4-LS2 (ref[3]). **J-P Corso**
 - Use of the LT.BHZ20 magnet in the L4 transfer line(ref[4]). **P-A. Thonet**



ENGINEERING CHANGE REQUEST

LBE line upgrade for the Linac4

BRIEF DESCRIPTION OF THE PROPOSED CHANGE(S):

The present LBE line is not adapted to the Linac4 beam characteristics. In order to measure the 160 MeV beam transverse emittances at the PS Booster injection, a new LBE line design and new auxiliary infrastructures in the area are proposed.

Remaining actions:

- Design of the “Passarelle” close to PSB shielding wall and its integration in the area. **(SMB) D. Parchet, R. Fernandez** (discussion ongoing in ICL meeting)
 - Integration in the 3D model. **J-P Corso**
- Write the chapter 3.2 “Dump and shielding”. **D. Granier, B. Riffaud**,
 - 3D model figure. **J-P Corso**
- Validate chapter 3.2 and 4.1 “Modification of shielding wall” by RP. **J. Vollaire**
- Validate the budget code written by J-B Lallement. **Klaus Hanke**
- Update the 3D model figures. **J-P Corso** (promised for 10th May)
- ~~EDMS number for the document. **T. Birtwistle** **DONE**~~





www.cern.ch