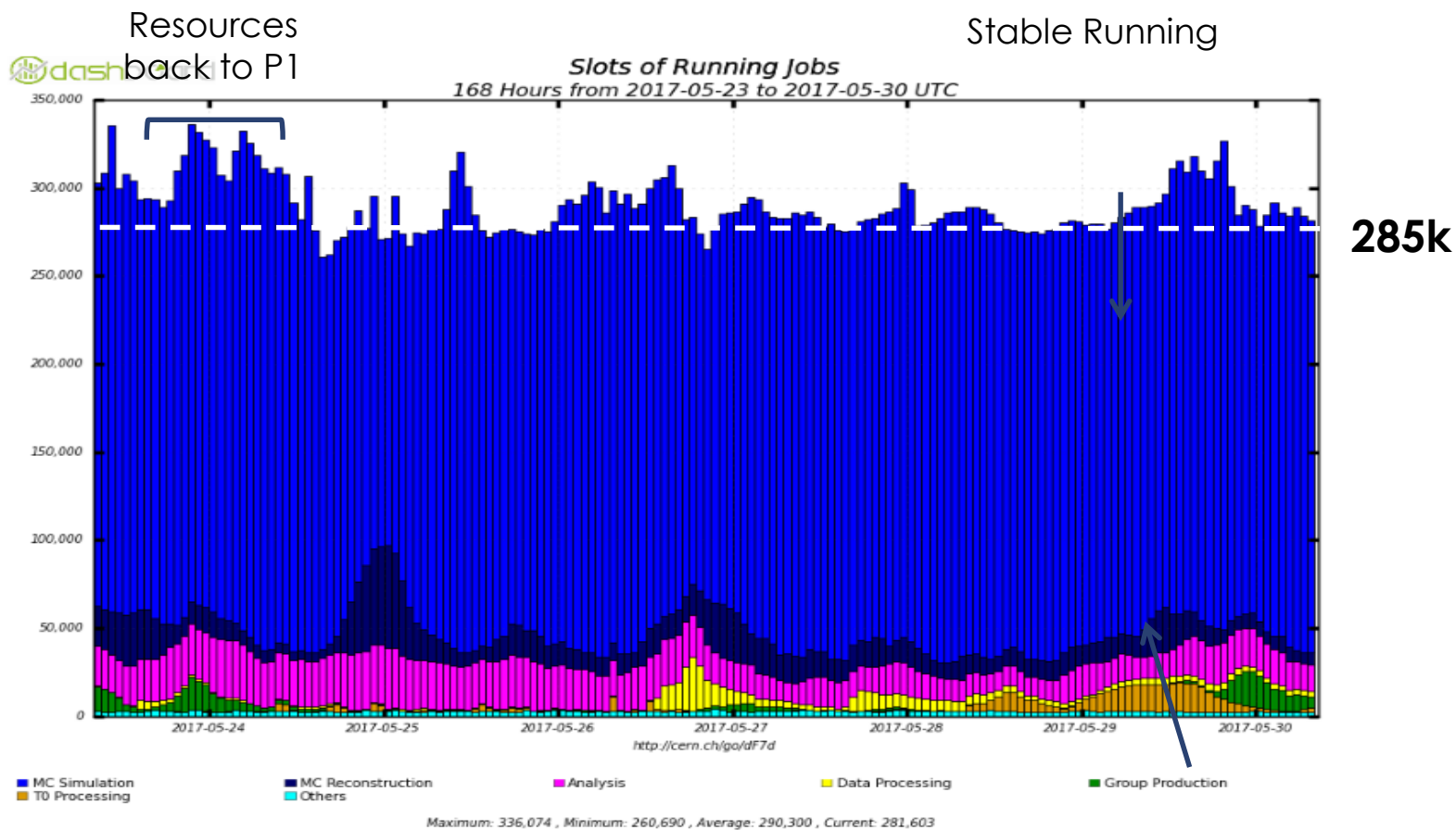


# CRC Report

---

Jose Enrique Garcia Navarro

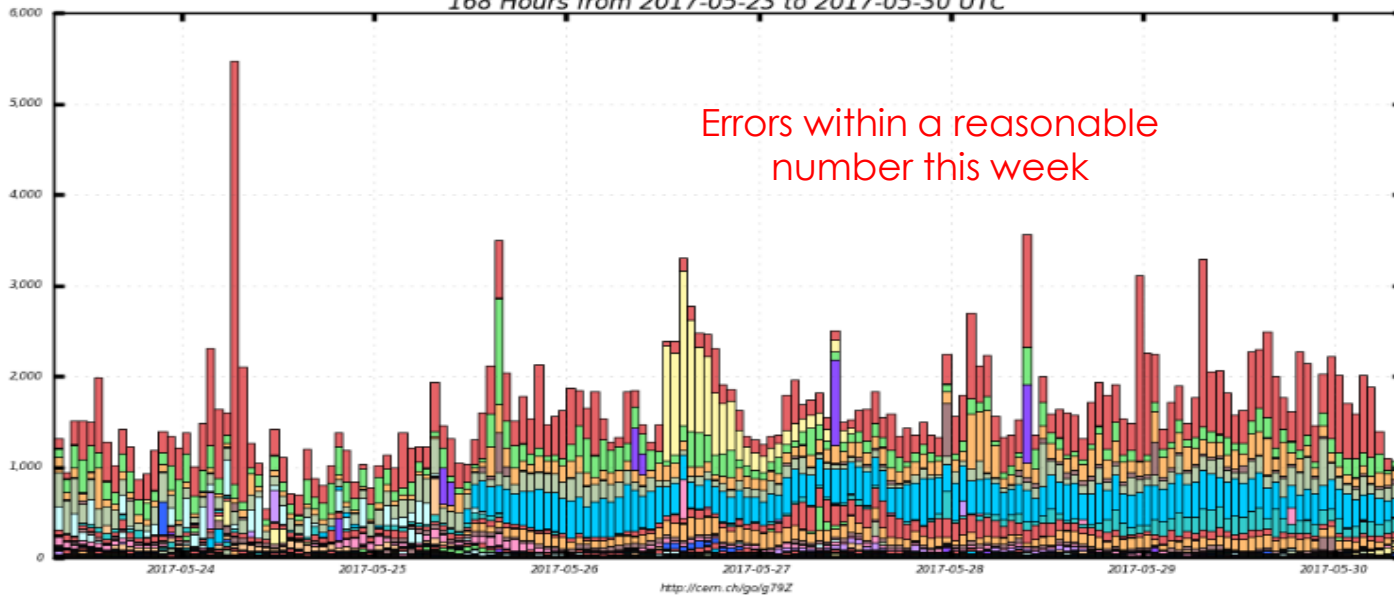
# Summary



# Summary

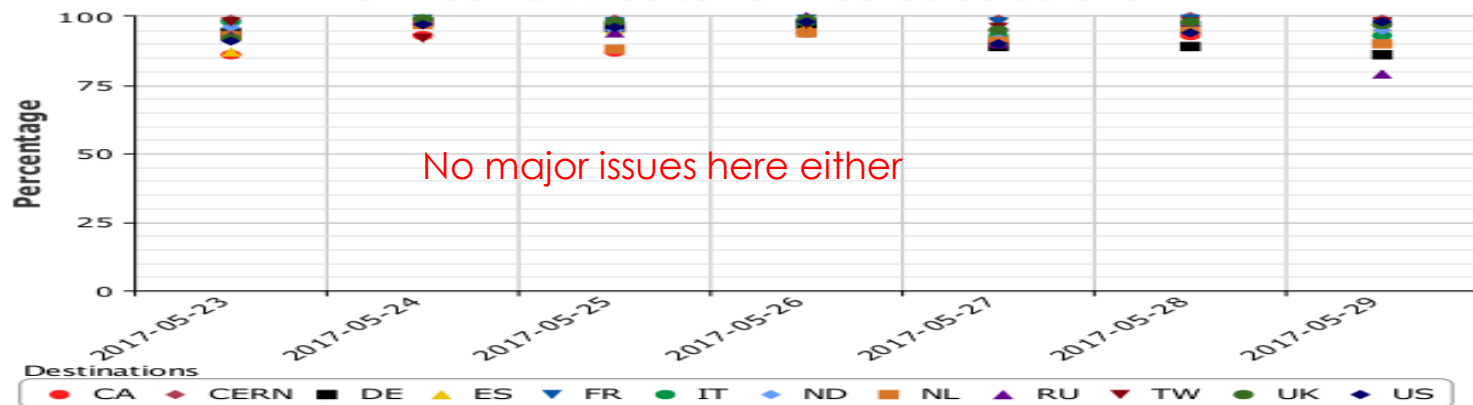
dashb@ard

Panda Failures by ExitCode  
168 Hours from 2017-05-23 to 2017-05-30 UTC



dashb@ard

Transfer Efficiency  
2017-05-23 00:00 to 2017-05-30 00:00 UTC



## Issues during week

- Production running stably with 280k- 300k job slots.
- **Data taking** : ATLAS is taking data, accumulated already 70 pb-1 since last Friday.
- **Data Consolidation**: Not a real issue but data consolidation, produced spikes in transfers during last week
- **Services** : Not a problem but panda logger (to be decommissioned) has been since last Wednesday. Probably better to remove it from monitoring (replacement?).

Global CVMFS Stratum1 ATLAS:

100 100

PanDA logger:

1 1

PanDA Proxy:

100 100

- **Storage** : SARA and PIC TAPE got almost full. PIC case is being followed up (data16 went to tape in addition to datadisk).