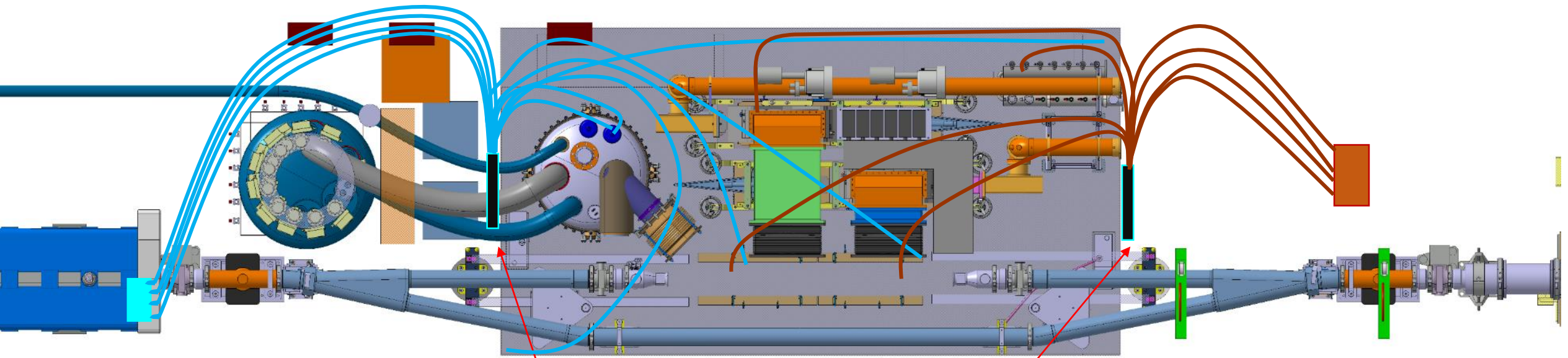


1. Proposition de routing des cables :
 - Avec 2 energy chains de part et d'autre de la table
 - Chaine amont (61734) : les fibres optiques, les cables de thermométrie de Sosin, les cables des cryogénistes)
 - Chaine aval (61744) : tous les autres et notamment les cables coaxiaux des RF
1. Re-routing des cables depuis l'actuelle fente dans le bus-bar, 6314m, jusqu'à la fente en aval, 6318m





Energy chains

Integration

TUNNEL

New reheater

Mini-rack CRG substituting the crates

Phase separator LN2

Blowers may go on the ceiling

Mini-rack for interlocks (NE48 cables)

Patch panels for RF-Power and LLRF, flexwell cables (3/8" and 7/8")

BA6 SURFACE BUILDING

EN/EL should give us the dimension of the 2 switchboards

Questions EN/EL

1. UPS requests

| ITEM | DESCRIPTION | V | kW |
|------|------------------------|-----|------|
| 1 | RA4721 | 230 | 3.5 |
| 2 | POWER STRIP FIP CRATES | 230 | 3.0 |
| 3 | CRYO RACK RA10100=TA6 | 230 | 3.5 |
| 4 | QUR1HEM02-20401 | 230 | 6.0 |
| 5 | Cage Faraday | 400 | 1.5 |
| 6 | RF Controls | 230 | 1.0 |
| | 2 PLC | | |
| | 2 Interlocks | | |
| | 1 table interface | | |
| | TOTAL | | 18.5 |

Can't this be reduced?
Better estimated ?

← Later, 4kW

3. Re-ALIM ?

see Gerardo's slide

2. Additional DIC ?

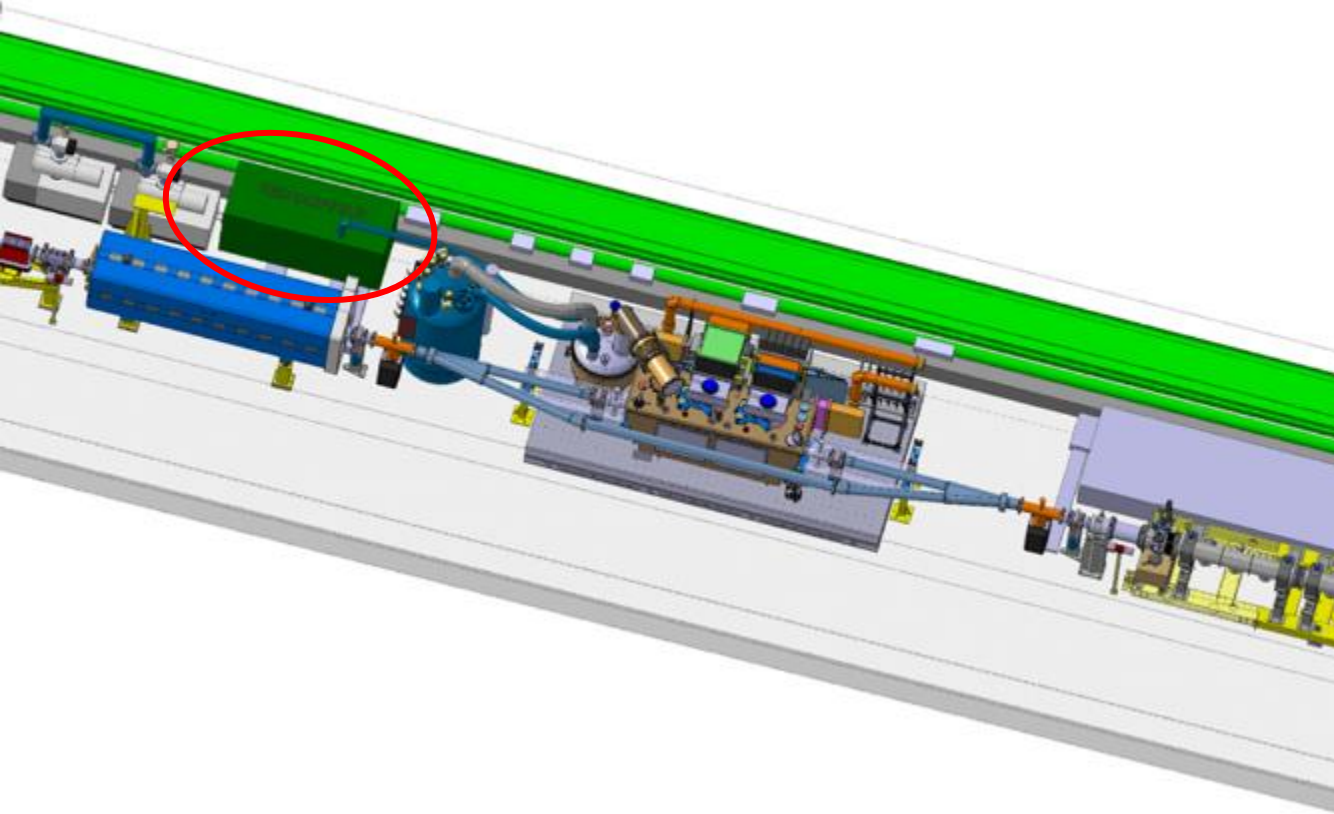
Transfer Table

BE/ICS Oxygen Deficiency Detection and Alarm flashes

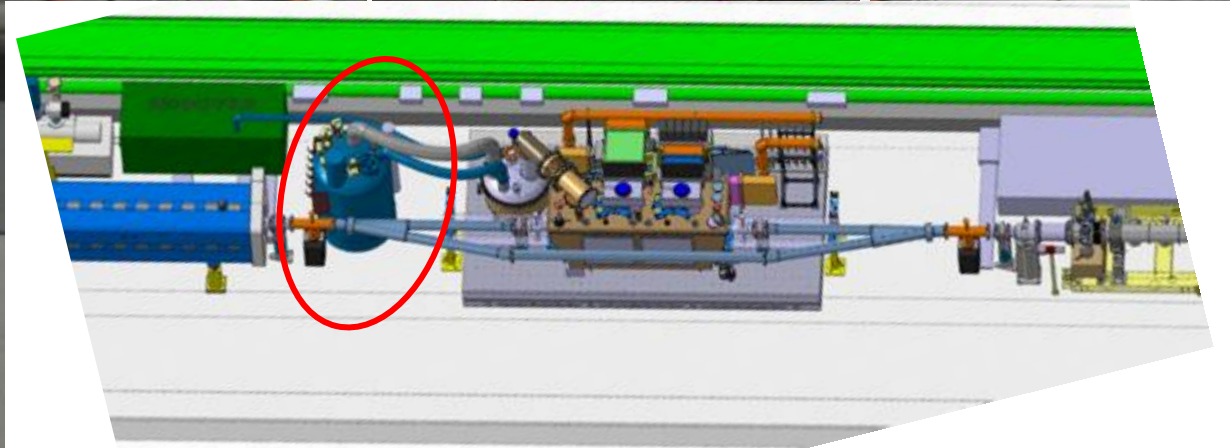
...

4. PROGRESS on crab zone in the coming TS?

Cable routing



Cable routing



Cable routing – flexwell 7/8'' and 3/8''

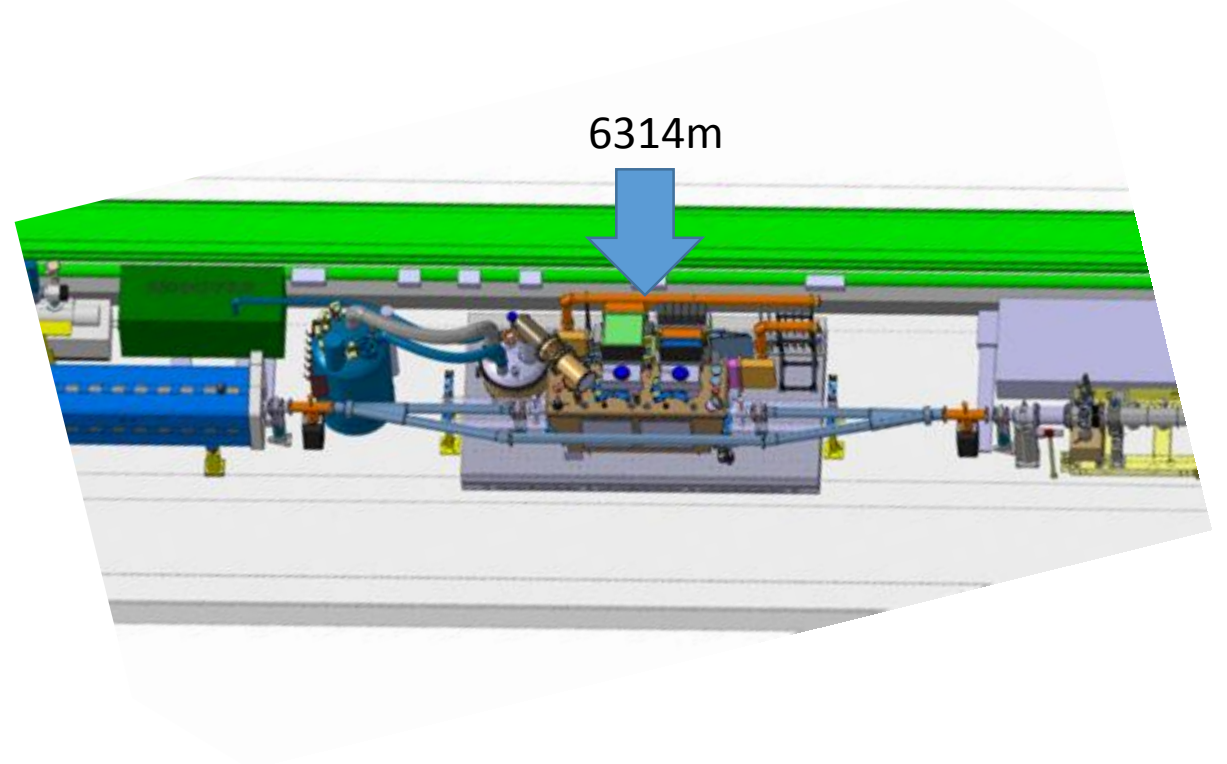


LHC example

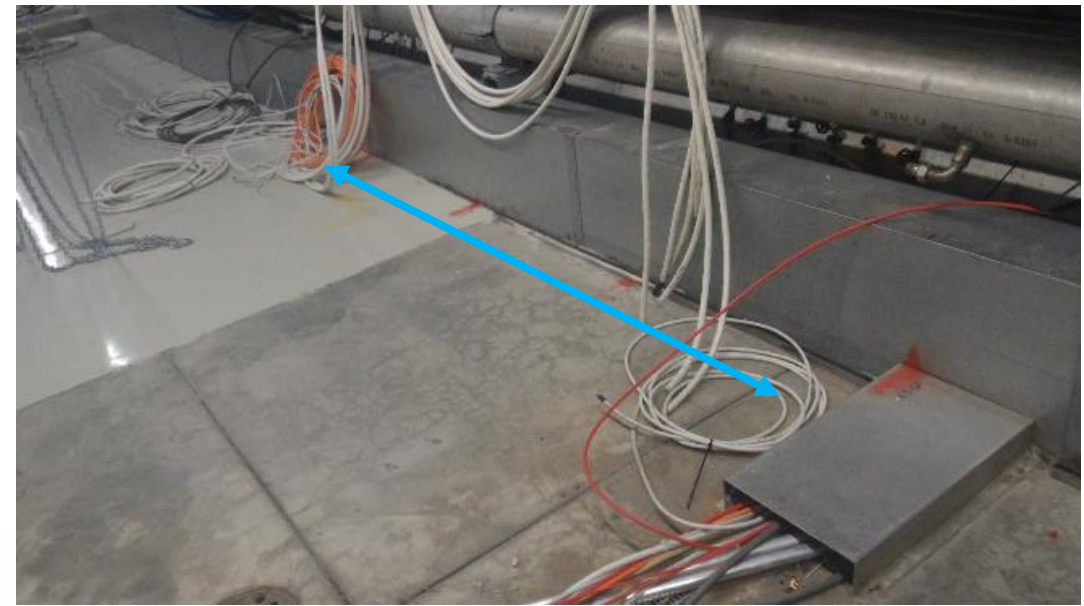


Cable routing

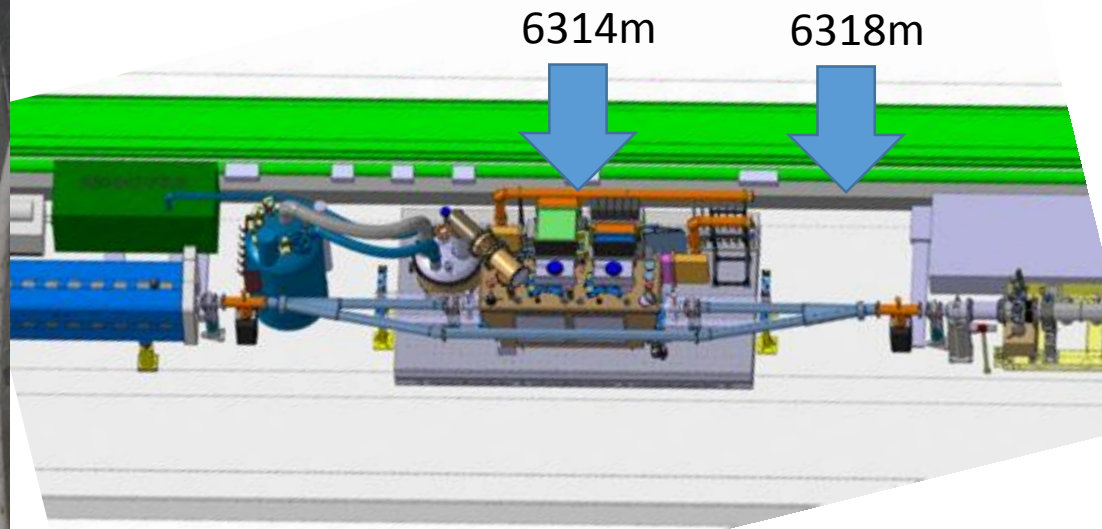
From behind the transfer table...



Cable routing



...to 4m more downstream



Activities TS#2

1. For the next TS, RF-Power foresees to install a load at the end of the RF Power lines, connect it to the lines and to water, to be able to test the emitters further on.
2. EN/EL: can you proceed to re-routing of the cables and cutting the flexwell, once the patch panel is installed?
3. EN/CV: is it possible to remove the unused water manifold (clarinette) during a 36h Technical Stop?
4. Others...?

