

EHN1\_NP \_ 13 juillet 2017

Liste des actions

G. Cumer EN/ACE

EHN1\_NP \_ 13 juillet 2017



G. Cumer EN/ACE

# EHN1\_NP \_ le 13 juillet 2017

Type	Date	Action	Responsible	Group	Deadline	Answer/Comments from responsible	Statute
Safety	Sep-16	Risk analysis ODH dans galerie GNH106 and galeries EHN1 existant	Team Risk Analysis	DSO EN -EP -HSE	Jan-17	<b>en attendant les intervenants dans la galerie doivent etre equipés de detecteurs ODH portatifs individuels _ la porte d'accès aux galeries sous la baraque BI est posée</b>	on going
Safety	May-17	Reception, mise en service reseau incendie et Hydrans	EN/CV	EN/CV HSE/FB EP/DSO	Mai-17	<b>tests et réception du réseau incendie + bornes hydrants planifié le 14 juin ( HSE/CV/EA/ACE)</b>	done
Safety	Mar-17	Note de calccul anti sismiques des Quais	HSE	HSE	Mai-17	Dear Lau, As discussed this afternoon (31 may 17) and referring to the documents at EDMS 1729183 v.1, <b>the proposed configuration of the shielding blocks' arrangement does not present STATIC issues.</b> Thus, <b>the foreseen assembly operations can be executed with a sufficient level of structural safety.</b>  However, such a blocks' configuration presents several critical aspects from the lateral stability standpoint, for which it doesn't exist any proper standard, rule, procedure or calculous. Antiseismic studies ongoing by HSE and civil engineering labs, which would be able to run tests on the so called "shacking table".	on going
integration	Mar-17	Necessité de conserver ou non, l'escalier d'accès passerelle cote JURA	HSE	HSE - DSO EP	Mai-17		on going
Safety	May-17	adapt the signalisation available on the different doors, especially concerning the passage between supervised and non-designated areas.	TSO's	EP _ EN/EA	Mai-17	R. Froeschl said that it will be important to adapt the signalisation available on the different doors, especially concerning the passage between supervised and non-designated areas.	done
Coordination	Mar-17	Definition et planing campagne 3 de tirage cables [sept-oct]	EN/EL	BE/ICS, EN/EL, IT/CS, TE/EPC, EN/EA, BE/BI ...	Jun-17	DIC a etabli ( RAMSES ?, cables pour la cryogenie, Cables DC...) [meeting du 23 fev 17 Indico : <a href="https://indico.cern.ch/event/615917/">https://indico.cern.ch/event/615917/</a> ]	on going

Liste des actions



# EHN1\_NP \_ le 13 juillet 2017

Type	Date	Action	Responsible	Group	Deadline	Answer/Comments from responsible	Statute
Safety	Sep-16	Risk analysis ODH dans galerie GNH106 and galleries EHN1 existant	Team Risk Analysis	DSO EN -EP -HSE	Jan-17	en attendant les intervenants dans la galerie doivent etre equipés de detecteurs ODH portatifs individuels _ la porte d'accès aux galeries sous la baraque BI est posée	on going
Safety	May-17	Reception, mise en service reseau incendie et Hydrans	EN/CV	EN/CV HSE/FB EP/DSO	Mai-17	tests et réception du réseau incendie + bornes hydrants planifié le 14 juin ( HSE/CV/EA/ACE)	done
Safety	Mar-17	Note de calcul anti sismiques des Quais	HSE	HSE	Mai-17	Dear Lau, As discussed this afternoon (31 may 17) and referring to the documents at EDMS 1729183 v.1, the proposed configuration of the shielding blocks' arrangement does not present STATIC issues. Thus, the foreseen assembly operations can be executed with a sufficient level of structural safety.  However, such a blocks' configuration presents several critical aspects from the lateral stability standpoint, for which it doesn't exist any proper standard, rule, procedure or calculus. Antiseismic studies ongoing by HSE and civil engineering labs, which would be able to run tests on the so called "shacking table".	on going
integration	Mar-17	Nécessité de conserver ou non, l'escalier d'accès passerelle cote JURA	HSE	HSE - DSO EP	Mai-17		on going
Safety	May-17	adapt the signalisation available on the different doors, especially concerning the passage between supervised and non-designated areas.	TSO's	EP _ EN/EA	Mai-17	R. Froeschl said that it will be important to adapt the signalisation available on the different doors, especially concerning the passage between supervised and non-designated areas.	done
Coordination	Mar-17	Definition et planing campagne 3 de tirage cables [sept-oct]	EN/EL	BE/ICS, EN/EL, IT/CS, TE/EPC, EN/EA, BE/BI ...	Jun-17	DIC a etabli ( RAMSES ?, cables pour la cryogenie, Cables DC...) [meeting du 23 fev 17 Indico : <a href="https://indico.cern.ch/event/615917/">https://indico.cern.ch/event/615917/</a> ]	on going

Risk analysis ODH dans galerie GNH106 and galleries EHN1 existant

# EHN1\_NP \_ le 12 juillet 2017



Accès galeries EHN1 existant (à terminer)



Séparation avec GNH106

Risk analysis ODH dans galerie GNH106 and galeries EHN1 existant  
Gestion du risque différent ?



# EHN1\_NP \_ le 12 juillet 2017



Accès galerie GNH106



Consigne Accès galerie GNH106

Risk analysis ODH dans galerie GNH106 and galeries EHN1 existant  
Gestion du risque différent ?

# EHN1\_NP \_ le 13 juillet 2017

Type	Date	Action	Responsible	Group	Deadline	Answer/Comments from responsible	Statute
Safety	Sep-16	Risk analysis ODH dans galerie GNH106 and galeries EHN1 existant	Team Risk Analysis	DSO EN -EP -HSE	Jan-17	en attendant les intervenants dans la galerie doivent etre equipés de detecteurs ODH portatifs individuels _ la porte d'accès aux galeries sous la baraque BI est posée	on going
Safety	May-17	Reception, mise en service reseau incendie et Hydrans	EN/CV	EN/CV HSE/FB EP/DSO	Mai-17	tests et réception du réseau incendie + bornes hydrants planifié le 14 juin ( HSE/CV/EA/ACE)	done
Safety	Mar-17	Note de calccul anti sismiques des Quais	HSE	HSE	Mai-17	Dear Lau, As discussed this afternoon (31 may 17) and referring to the documents at EDMS 1729183 v.1, the proposed configuration of the shielding blocks' arrangement does not present STATIC issues. Thus, the foreseen assembly operations can be executed with a sufficient level of structural safety.  However, such a blocks' configuration presents several critical aspects from the lateral stability standpoint, for which it doesn't exist any proper standard, rule, procedure or calculous. Antiseismic studies ongoing by HSE and civil engineering labs, which would be able to run tests on the so called "shacking table".	on going
integration	Mar-17	Necessité de conserver ou non, l'escalier d'accès passerelle cote JURA	HSE	HSE - DSO EP	Mai-17		on going
Safety	May-17	adapt the signalisation available on the different doors, especially concerning the passage between supervised and non-designated areas.	TSO's	EP _ EN/EA	Mai-17	R. Froeschl said that it will be important to adapt the signalisation available on the different doors, especially concerning the passage between supervised and non-designated areas.	done
Coordination	Mar-17	Definition et planing campagne 3 de tirage cables [sept-oct]	EN/EL	BE/ICS, EN/EL, IT/CS, TE/EPC, EN/EA, BE/BI ...	Jun-17	DIC a etabliir ( RAMSES ?, cables pour la cryogenie, Cables DC...) [meeting du 23 fev 17 Indico : <a href="https://indico.cern.ch/event/615917/">https://indico.cern.ch/event/615917/</a> ]	on going

Réception, mise en service réseau incendie et Hydrants

Done 😊

# EHN1\_NP \_ le 13 juillet 2017

Type	Date	Action	Responsible	Group	Deadline	Answer/Comments from responsible	Statute
Safety	Sep-16	Risk analysis ODH dans galerie GNH106 and galeries EHN1 existant	Team Risk Analysis	DSO EN -EP -HSE	Jan-17	en attendant les intervenants dans la galerie doivent etre equipés de detecteurs ODH portatifs individuels _ la porte d'accès aux galeries sous la baraque BI est posée	on going
Safety	May-17	Reception, mise en service reseau incendie et Hydrans	EN/CV	EN/CV HSE/FB EP/DSO	Mai-17	tests et réception du réseau incendie + bornes hydrants planifié le 14 juin ( HSE/CV/EA/ACE1)	done
Safety	Mar-17	Note de calcul anti sismiques des Quais	HSE	HSE	Mai-17	Dear Lau, As discussed this afternoon (31 may 17) and referring to the documents at EDMS 1729183 v.1, the proposed configuration of the shielding blocks' arrangement does not present STATIC issues. Thus, the foreseen assembly operations can be executed with a sufficient level of structural safety.  However, such a blocks' configuration presents several critical aspects from the lateral stability standpoint, for which it doesn't exist any proper standard, rule, procedure or calculus. Antiseismic studies ongoing by HSE and civil engineering labs, which would be able to run tests on the so called "shacking table"	on going
integration	Mar-17	Nécessité de conserver ou non, l'escalier d'accès passerelle cote JURA	HSE	HSE - DSO EP	Mai-17		on going
Safety	May-17	adapt the signalisation available on the different doors, especially concerning the passage between supervised and non-designated areas.	TSO's	EP _ EN/EA	Mai-17	R. Froeschl said that it will be important to adapt the signalisation available on the different doors, especially concerning the passage between supervised and non-designated areas.	done
Coordination	Mar-17	Definition et planing campagne 3 de tirage cables [sept-oct]	EN/EL	BE/ICS, EN/EL, IT/CS, TE/EPC, EN/EA, BE/BI ...	Jun-17	DIC a etabli ( RAMSES ?, cables pour la cryogenie, Cables DC...) [meeting du 23 fev 17 Indico : <a href="https://indico.cern.ch/event/615917/">https://indico.cern.ch/event/615917/</a> ]	on going

Note de calcul anti sismiques pour les Quais  
No static issues\_ Installation des Quais en cours

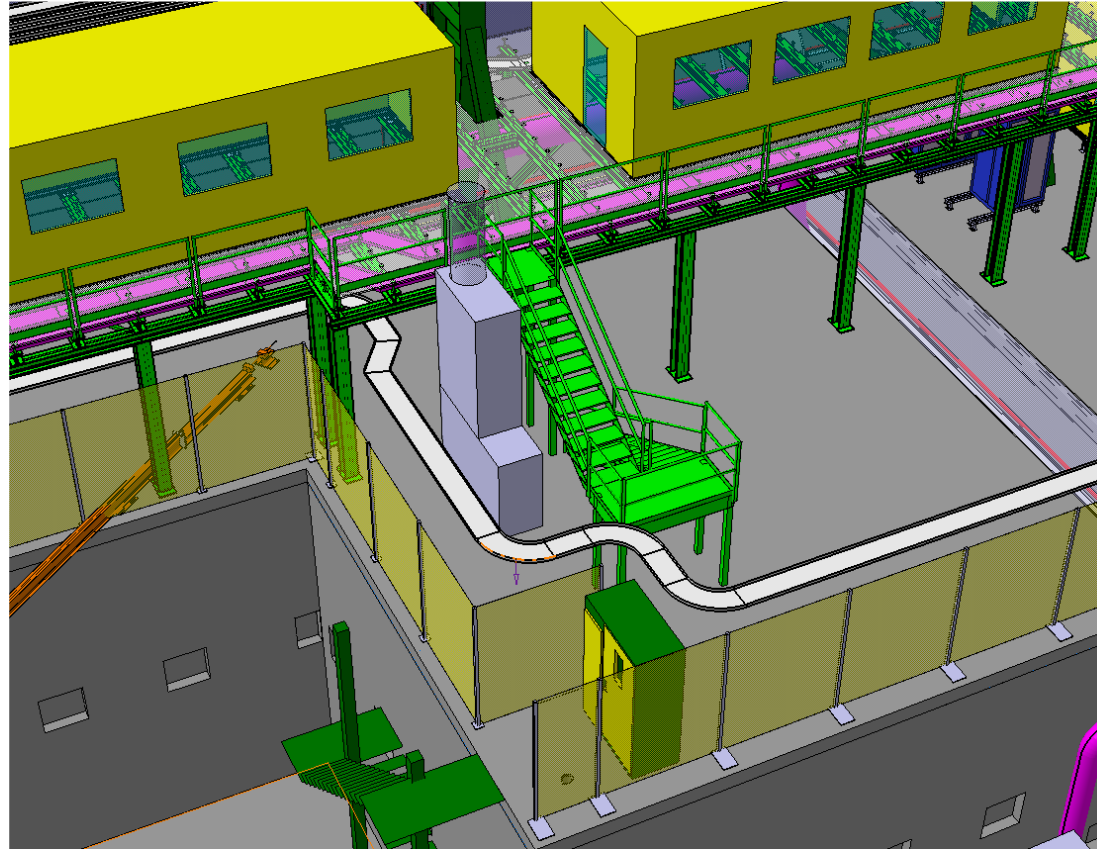


# EHN1\_NP \_ le 13 juillet 2017

Type	Date	Action	Responsible	Group	Deadline	Answer/Comments from responsible	Statute
Safety	Sep-16	Risk analysis ODH dans galerie GNH106 and galeries EHN1 existant	Team Risk Analysis	DSO EN -EP -HSE	Jan-17	en attendant les intervenants dans la galerie doivent etre equipés de detecteurs ODH portatifs individuels _ la porte d'accès aux galeries sous la baraque BI est posée	on going
Safety	May-17	Reception, mise en service reseau incendie et Hydrans	EN/CV	EN/CV HSE/FB EP/DSO	Mai-17	tests et réception du réseau incendie + bornes hydrants planifié le 14 juin ( HSE/CV/EA/ACE)	done
Safety	Mar-17	Note de calccul anti sismiques des Quais	HSE	HSE	Mai-17	Dear Lau, As discussed this afternoon (31 may 17) and referring to the documents at EDMS 1729183 v.1, the proposed configuration of the shielding blocks' arrangement does not present STATIC issues. Thus, the foreseen assembly operations can be executed with a sufficient level of structural safety.  However, such a blocks' configuration presents several critical aspects from the lateral stability standpoint, for which it doesn't exist any proper standard, rule, procedure or calculous. Antiseismic studies ongoing by HSE and civil engineering labs, which would be able to run tests on the so-called "checking table"	on going
integration	Mar-17	Nécessité de conserver ou non, l'escalier d'accès passerelle cote JURA	HSE	HSE - DSO EP	Mai-17		on going
Safety	May-17	adapt the signalisation available on the different doors, especially concerning the passage between supervised and non-designated areas.	TSO's	EP _ EN/EA	Mai-17	R. Froeschl said that it will be important to adapt the signalisation available on the different doors, especially concerning the passage between supervised and non-designated areas.	done
Coordination	Mar-17	Definition et planing campagne 3 de tirage cables [sept-oct]	EN/EL	BE/ICS, EN/EL, IT/CS, TE/EPC, EN/EA, BE/BI ...	Jun-17	DIC a etabli ( RAMSES ?, cables pour la cryogenie, Cables DC...) [meeting du 23 fev 17 Indico : <a href="https://indico.cern.ch/event/615917/">https://indico.cern.ch/event/615917/</a> ]	on going

Confirmer la nécessité l'escalier coté JURA (Plan évacuation des fosses ?)

EHN1\_NP \_ le 12 juillet 2017



Confirmer la nécessité l'escalier coté JURA (Plan évacuation des fosses ?)  
EP avec HSE \_ A.S.A.P. !!

# EHN1\_NP \_ le 13 juillet 2017

Type	Date	Action	Responsible	Group	Deadline	Answer/Comments from responsible	Statute
Safety	Sep-16	Risk analysis ODH dans galerie GNH106 and galeries EHN1 existant	Team Risk Analysis	DSO EN -EP -HSE	Jan-17	en attendant les intervenants dans la galerie doivent etre equipés de detecteurs ODH portatifs individuels _ la porte d'accès aux galeries sous la baraque BI est posée	on going
Safety	May-17	Reception, mise en service reseau incendie et Hydrans	EN/CV	EN/CV HSE/FB EP/DSO	Mai-17	tests et réception du réseau incendie + bornes hydrants planifié le 14 juin ( HSE/CV/EA/ACE)	done
Safety	Mar-17	Note de calccul anti sismiques des Quais	HSE	HSE	Mai-17	Dear Lau, As discussed this afternoon (31 may 17) and referring to the documents at EDMS 1729183 v.1, the proposed configuration of the shielding blocks' arrangement does not present STATIC issues. Thus, the foreseen assembly operations can be executed with a sufficient level of structural safety.  However, such a blocks' configuration presents several critical aspects from the lateral stability standpoint, for which it doesn't exist any proper standard, rule, procedure or calculous. Antiseismic studies ongoing by HSE and civil engineering labs, which would be able to run tests on the so called "shacking table".	on going
integration	Mar-17	Necessité de conserver ou non, l'escalier d'accès passerelle cote JURA	HSE	HSE - DSO EP	Mai-17		on going
Safety	May-17	adapt the signalisation available on the different doors, especially concerning the passage between supervised and non-designated areas.	TSO's	EP _ EN/EA	Mai-17	R. Froeschl said that it will be important to adapt the signalisation available on the different doors, especially concerning the passage between supervised and non-designated areas.	done
Coordination	Mar-17	Definition et planing campagne 3 de tirage cables [sept-oct]	EN/EL	BE/ICS, EN/EL, IT/CS, TE/EPC, EN/EA, BE/BI ...	Jun-17	DIC a etabli ( RAMSES ?, cables pour la cryogenie, Cables DC...) [meeting du 23 fev 17 Indico : <a href="https://indico.cern.ch/event/615917/">https://indico.cern.ch/event/615917/</a> ]	on going

Signalisation adaptée sur les portes

Done 😊



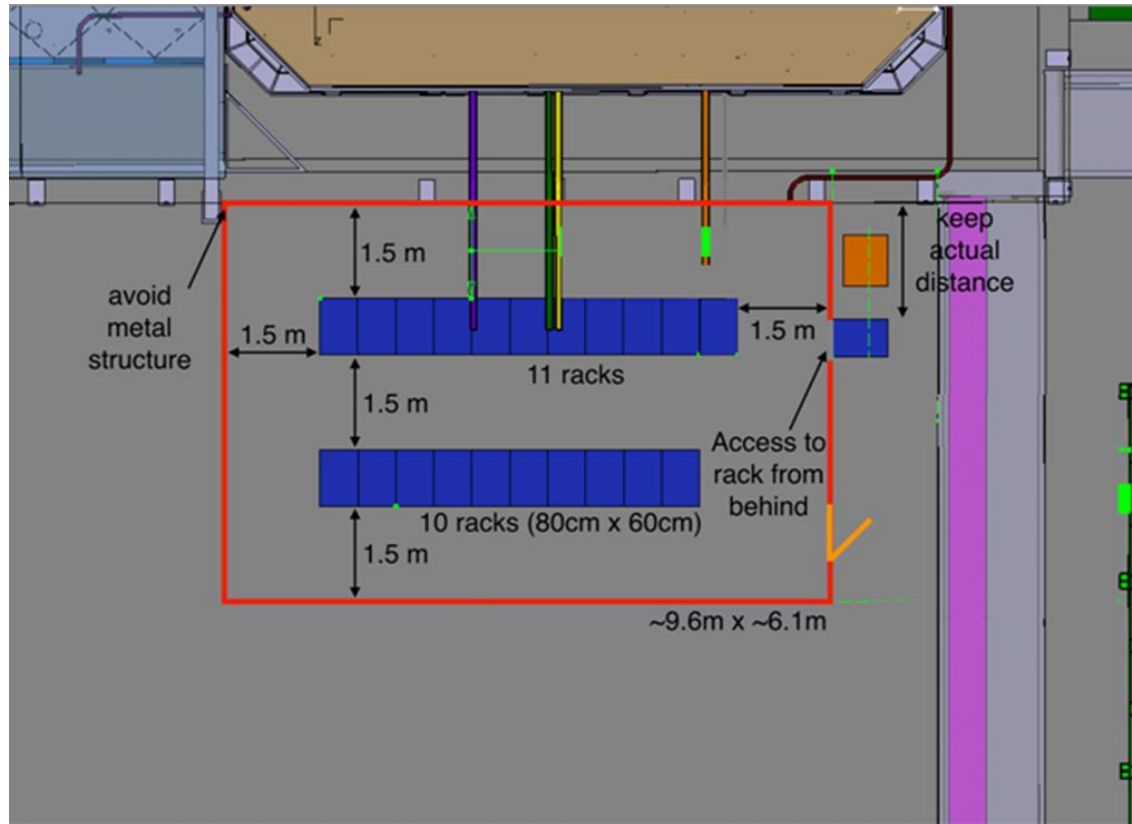
# EHN1\_NP \_ le 13 juillet 2017

Type	Date	Action	Responsible	Group	Deadline	Answer/Comments from responsible	Statute
Safety	Sep-16	Risk analysis ODH dans galerie GNH106 and galeries EHN1 existant	Team Risk Analysis	DSO EN -EP -HSE	Jan-17	en attendant les intervenants dans la galerie doivent etre equipés de detecteurs ODH portatifs individuels _ la porte d'accès aux galeries sous la baraque BI est posée	on going
Safety	May-17	Reception, mise en service reseau incendie et Hydrans	EN/CV	EN/CV HSE/FB EP/DSO	Mai-17	tests et réception du réseau incendie + bornes hydrants planifié le 14 juin ( HSE/CV/EA/ACE)	done
Safety	Mar-17	Note de calccul anti sismiques des Quais	HSE	HSE	Mai-17	Dear Lau, As discussed this afternoon (31 may 17) and referring to the documents at EDMS 1729183 v.1, the proposed configuration of the shielding blocks' arrangement does not present STATIC issues. Thus, the foreseen assembly operations can be executed with a sufficient level of structural safety.  However, such a blocks' configuration presents several critical aspects from the lateral stability standpoint, for which it doesn't exist any proper standard, rule, procedure or calculus. Antiseismic studies ongoing by HSE and civil engineering labs, which would be able to run tests on the so called "shacking table".	on going
integration	Mar-17	Nécessité de conserver ou non, l'escalier d'accès passerelle cote JURA	HSE	HSE - DSO EP	Mai-17		on going
Safety	May-17	adapt the signalisation available on the different doors, especially concerning the passage between supervised and non-designated areas.	TSO's	EP _ EN/EA	Mai-17	R. Froeschl said that it will be important to adapt the signalisation available on the different doors, especially concerning the passage between supervised and non-designated areas.	done
Coordination	Mar-17	Definition et planing campagne 3 de tirage cables [sept-oct]	EN/EL	BE/ICS, EN/EL, IT/CS, TE/EPC, EN/EA, BE/BI ...	Jun-17	DIC a etabli ( RAMSES ?, cables pour la cryogenie, Cables DC...) [meeting du 23 fev 17 Indico : <a href="https://indico.cern.ch/event/615917/">https://indico.cern.ch/event/615917/</a> ]	on going

Campagne de câblage 3

Préparation en cours \_ DIC à envoyer ou à confirmer d'URGENCE

# EHN1\_NP \_ le 13 juillet 2017



Zone des racks NP04

Fabrication terminée par EN/ACE, installation à planifier ... espaces à libérer !



# EHN1\_NP \_ le 13 juillet 2017

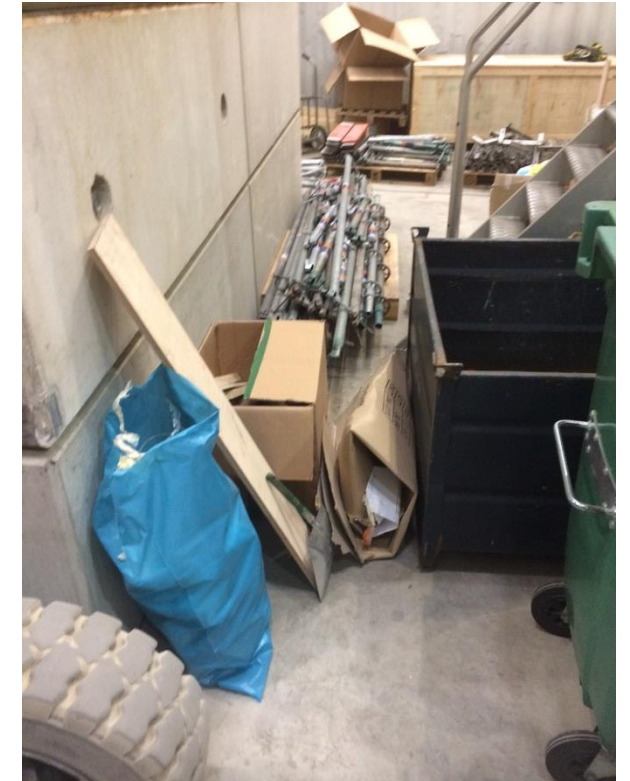


The current situation in the trenches is totally unacceptable there is no clear evacuation route there are materials and rubbish everywhere, if we had to evacuate in an emergency it would be a total disaster.

**Serious Circulation Problems in the trench ( John Etheridge PSO)**



# EHN1\_NP \_ le 13 juillet 2017



The current situation in the trenches is totally unacceptable there is no clear evacuation route there are materials and rubbish everywhere, if we had to evacuate in an emergency it would be a total disaster.

**Serious Circulation Problems in the trench ( John Etheridge PSO)**



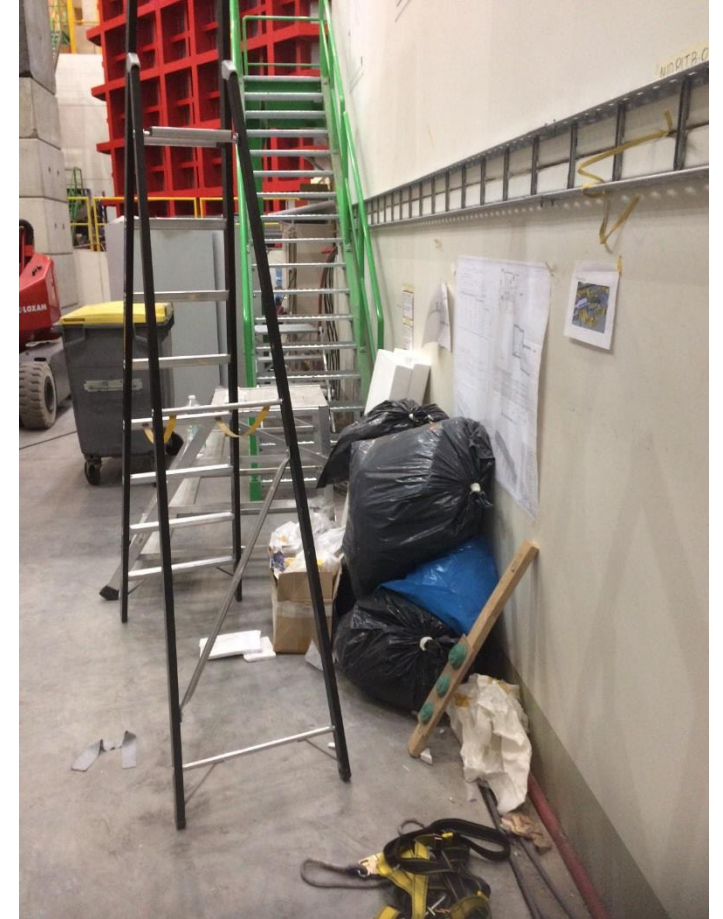
EHN1\_NP \_ le 13 juillet 2017



**And still ..... House Keeping ( John Etheridge PSO)**



# EHN1\_NP \_ le 13 juillet 2017



**And still ..... House Keeping ( John Etheridge PSO)**