



Neutrino Platform Proximity Cryogenics

72th EHN1 Cryogenics Integration

TE-CRG

Metallic structures

- Week 29 update for Sarvadon contract 17079:
 - Drawings received for 4/4 platforms
 - Installed platforms:
 - NP 02 40 F1 ST
 - NP 04 40 F1 ST
 - Installation schedule
 - NP 04 40 AP ST 17/07/2017
 - NP 02 40 CA ST 24/07/2017

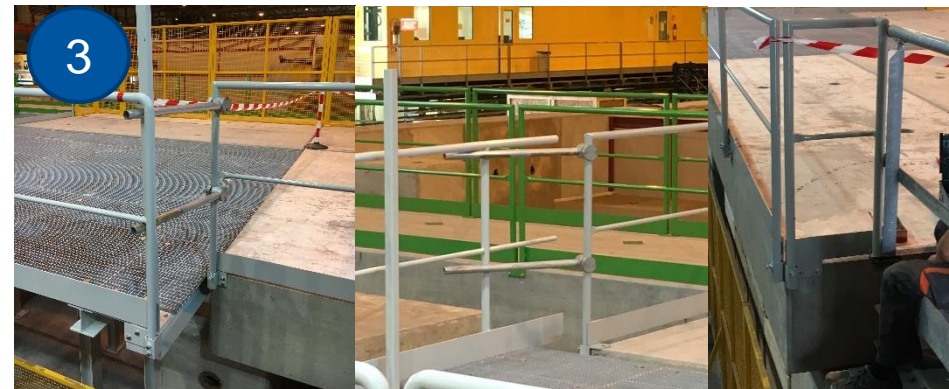
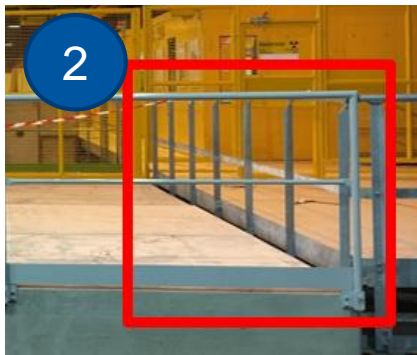
Metallic structures

- As built pictures NP 02 40 F1 ST



Metallic structures

- Details of securing of NP 02 40 F1 ST area
 - Action 1: Add ramp to platform/concrete – Sarvadon – **Not executed**
 - Action 2: Removal of barrier – EN-ACE – **Execution today**
 - Action 3: Barrier gaps proection- EN-ACE – **Protected 3/3**



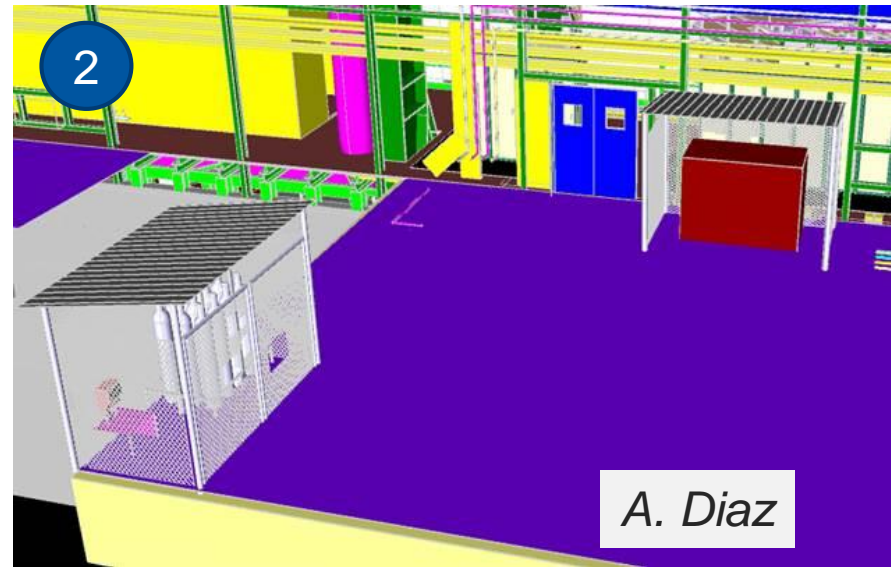
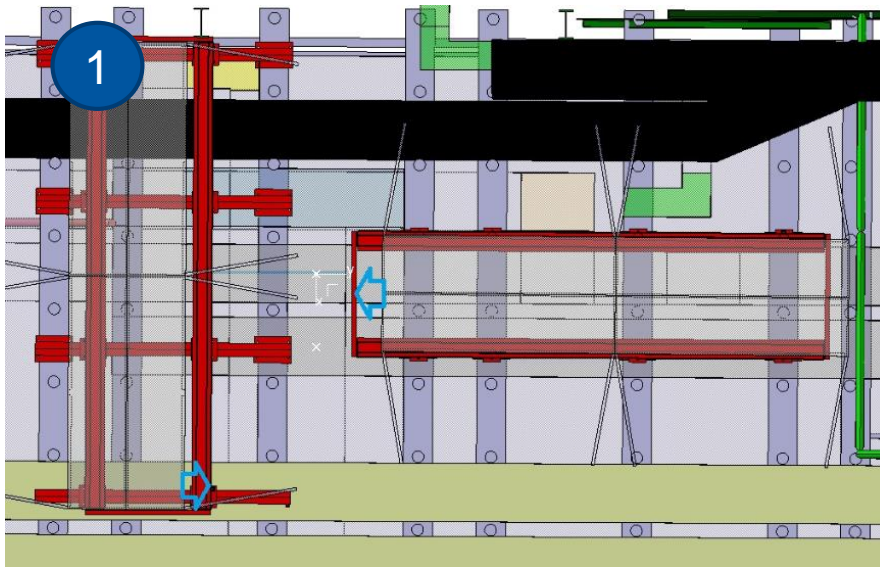
Metallic structures

- As built pictures NP 04 40 F1 ST



Metallic Structures

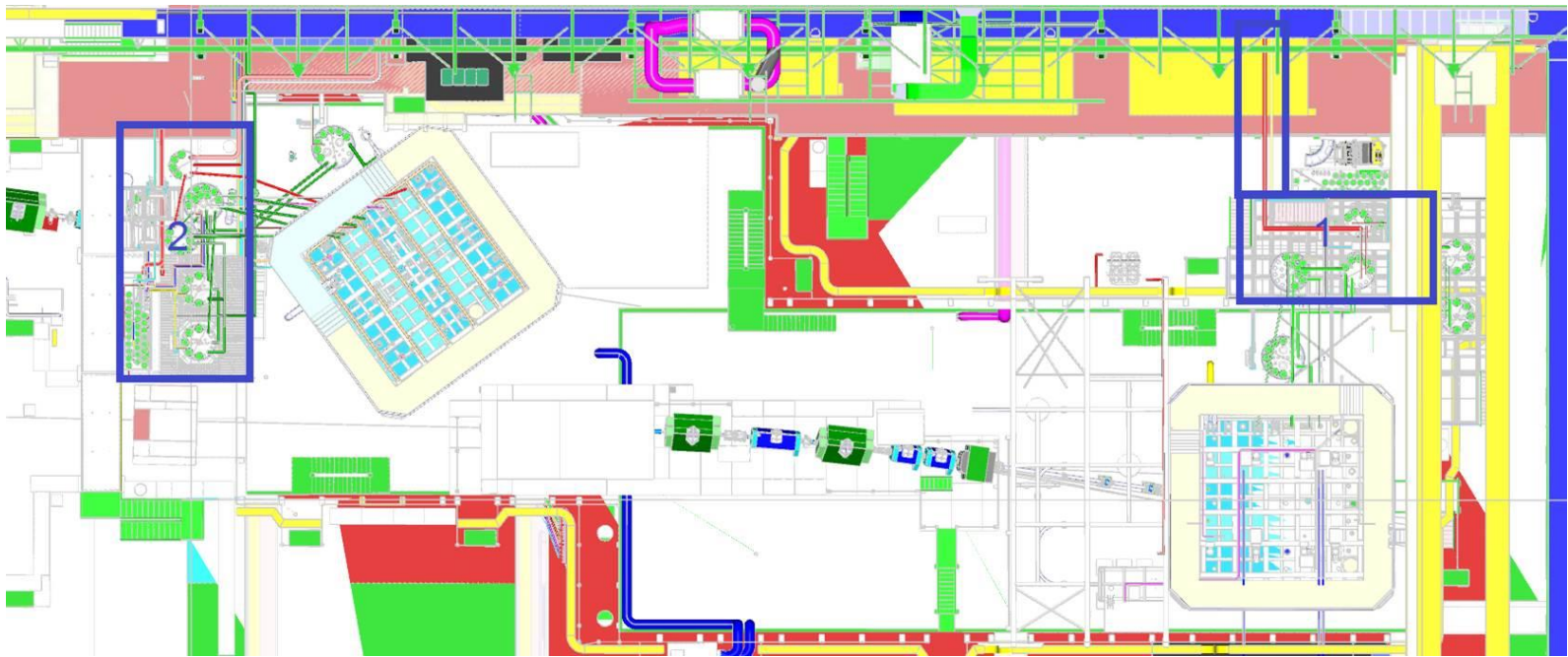
1. Racks support ordered, by EN-EA, d. wk36
2. Two external fenced huts, by EN-ACE, d. wk 38
3. 20 inox supports for field boxes, Slovakia supplier , d. wk 36



Metallic Structures

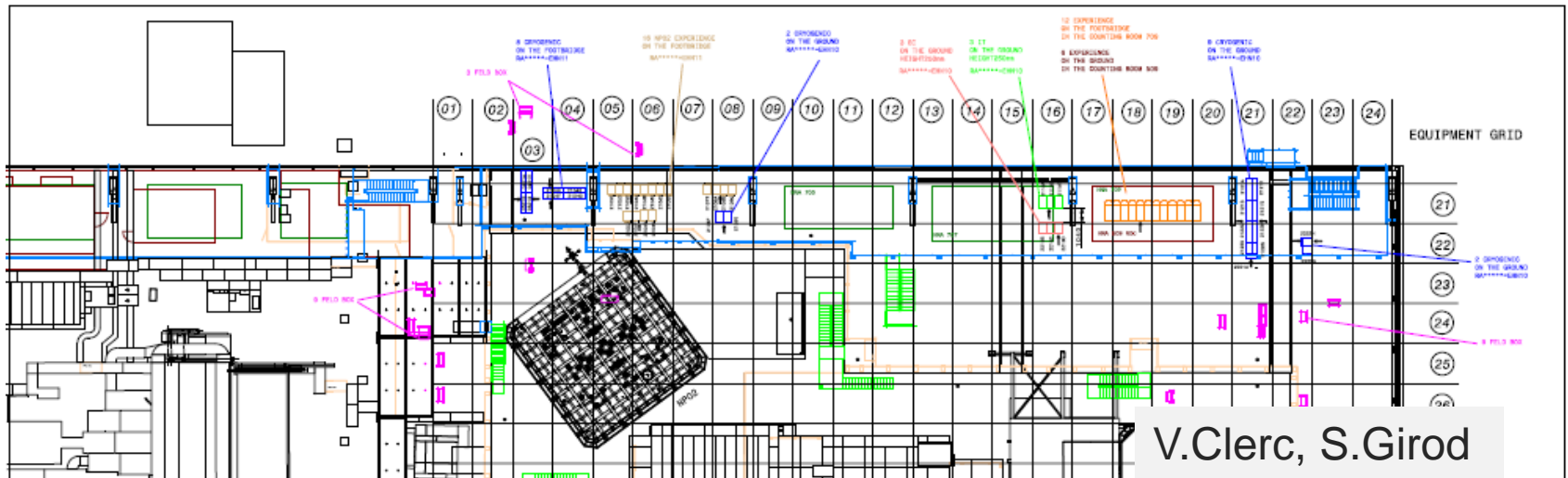
Crane Cabin Exclusion Zone – height to ground $>7.1\text{m}$

- Zone 1: covering all the elements that interfere with the crane cabin from July 21st. The distance of the platform piping supports to the ground floor is 7.9m .
- Zone 2: covering all the elements that interfere with the crane cabin from July 28th. The distance of the platform piping supports to the ground floor is 7.8m .



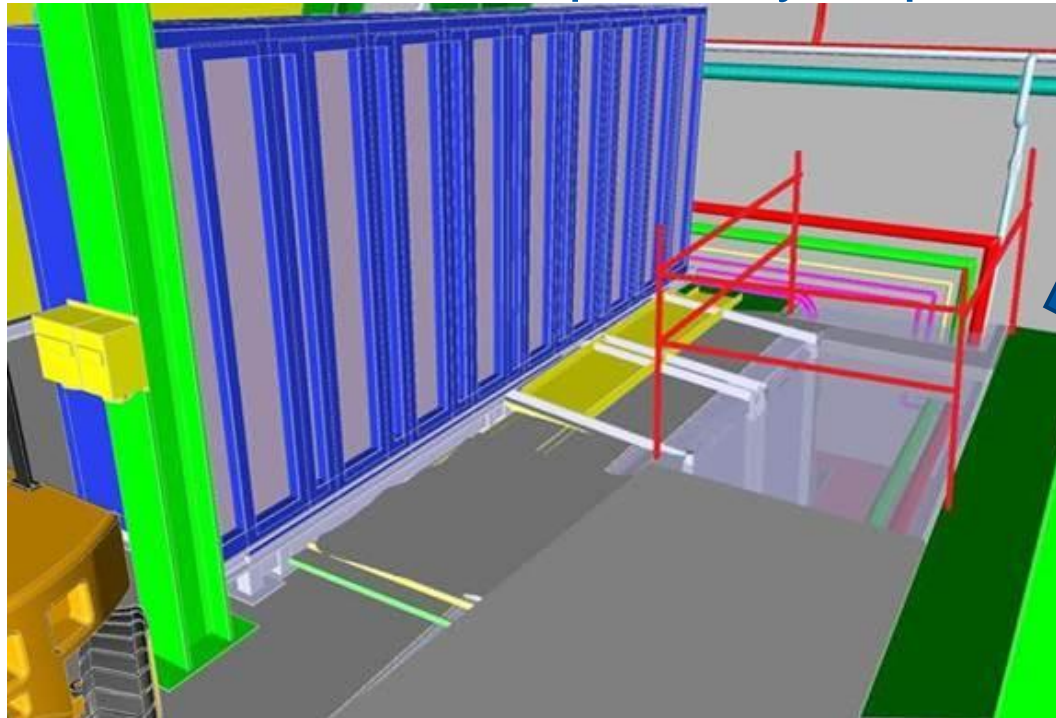
Control Hardware

- Ongoing: Cabling of cryogenics control barrack HNA 803
- Cable trays EN-EL:
 - Installation start with NP 02 week 31
 - Installation finished before week 39
- Installation racks / field box TE-CRG from week 37 to 40
- Cabling between racks and field boxes week 42 (CC3)



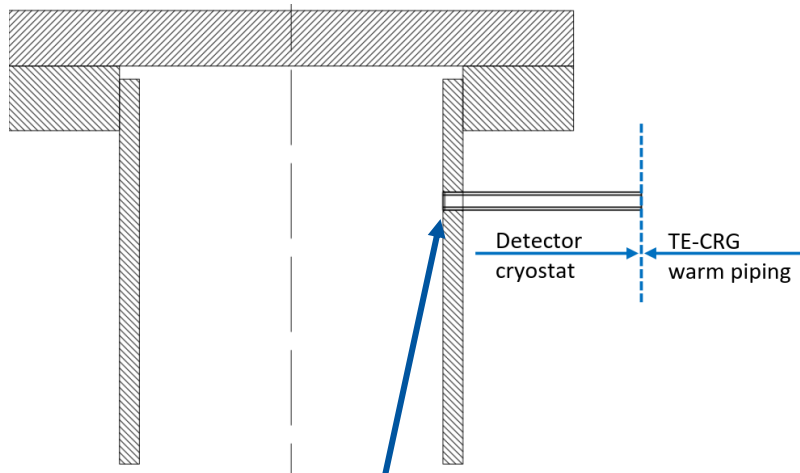
Control Hardware

- Need of Permanent protection of trench for cable trays and racks installation. Stairs end in front.
- Location of point, next to NP04 racks
- A protection should be in place by September 2017

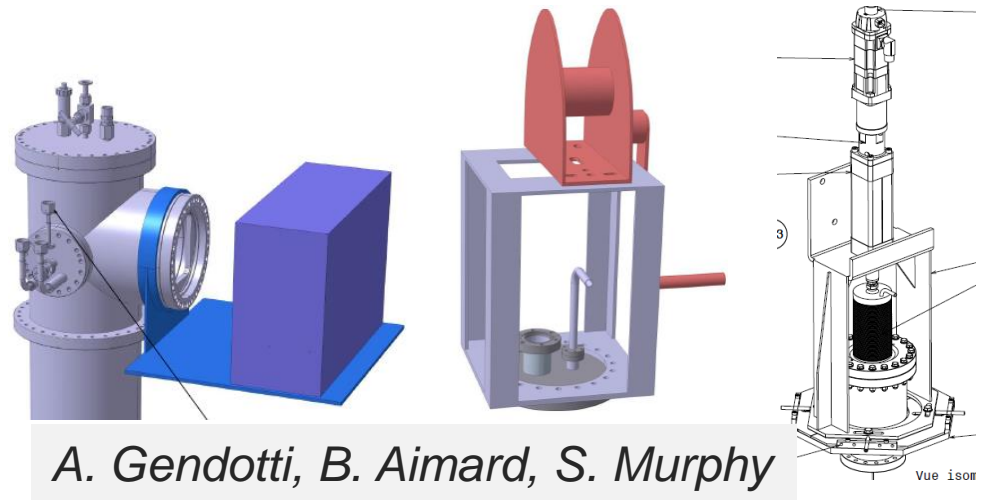


Warm piping top cap NP-02

- Requirement of side purge ports in the cryostat penetration flange collars: detector requires 13 ports and internal cryogenics requires 14 ports.
- Installation of purge lines later after January 2018

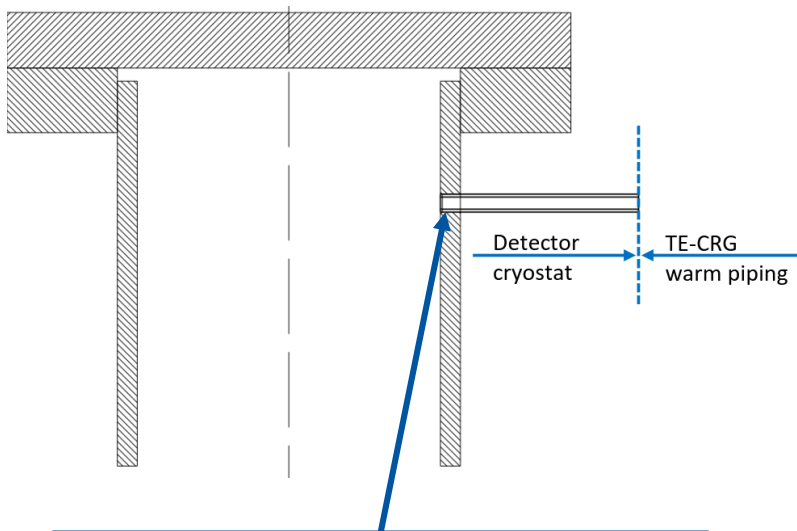


Side purge pipes
not welded in the cryostat

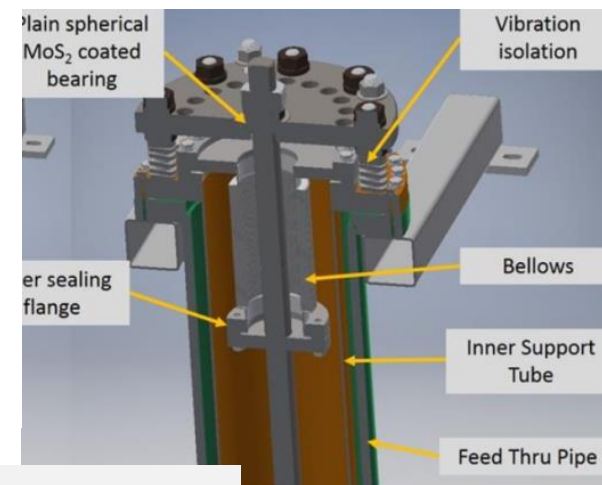
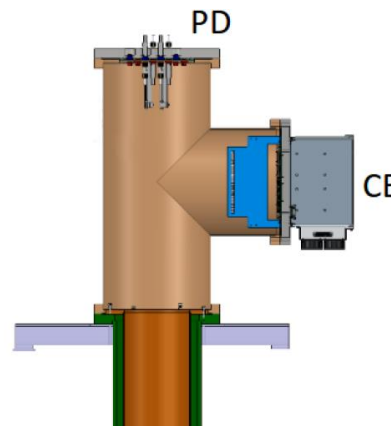


Warm piping top cap NP-04

- Requirement of side purge ports in the cryostat penetration flange collars: detector requires 22 ports and internal cryogenics requires 14 ports.
- Installation of purge lines later after October 2017



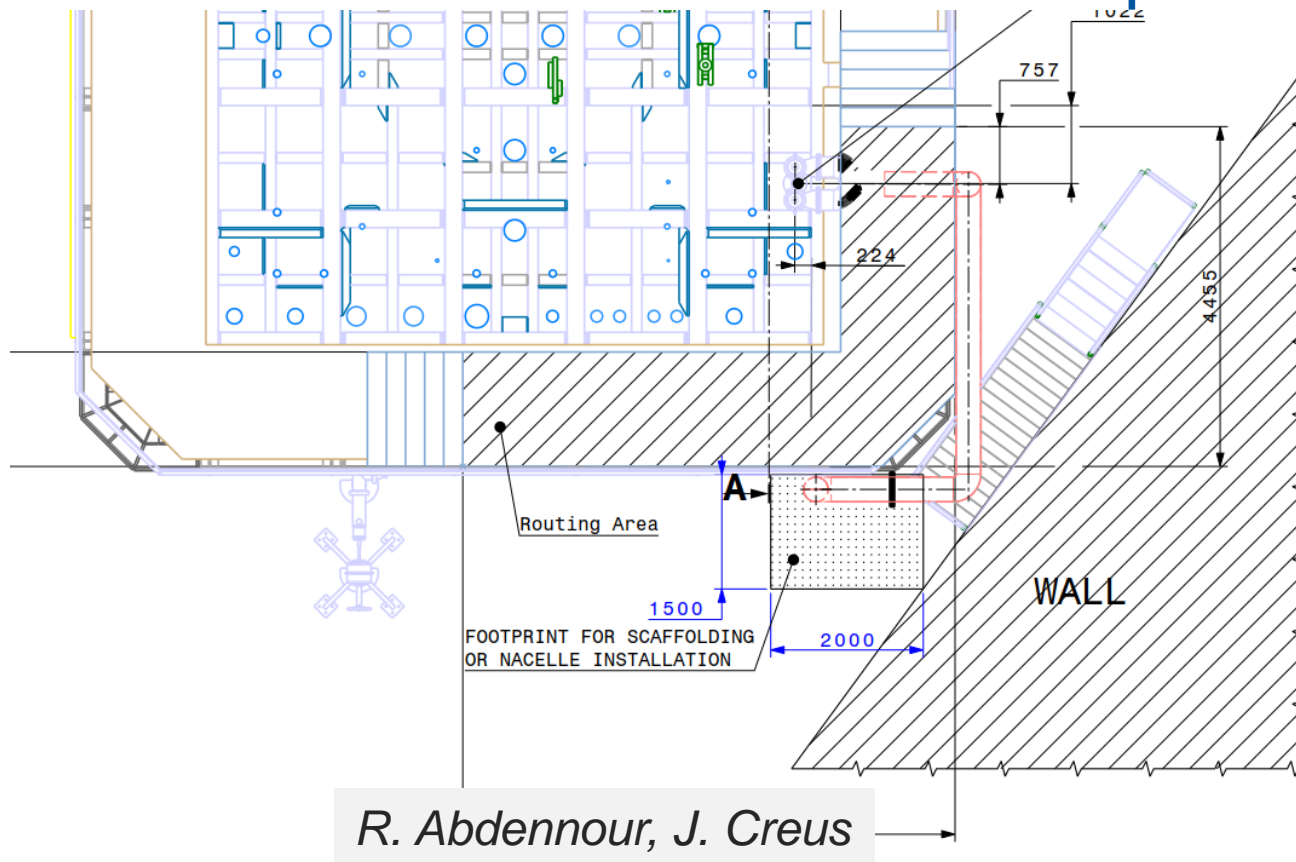
Side purge pipes
not welded in the cryostat



R. Acciarri + DUNE

Warm piping cryostats

- Cryostat safety relief collector NP-02
- Installation before beam stairs are in place. Dates?





www.cern.ch