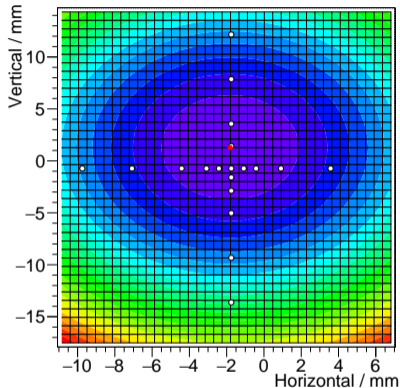
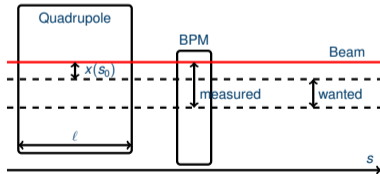


BEAM BASED ALIGNMENT AT COSY

Tim Wagner for the JEDI Collaboration

- Alignment of quadrupoles with respect to BPMs needed for a reduction of systematic errors of an EDM measurement at COSY
- Measure orbit distortion in the accelerator when changing the quadrupole field and fit a suitable merit function



White points are measurements
Red point is optimal position