

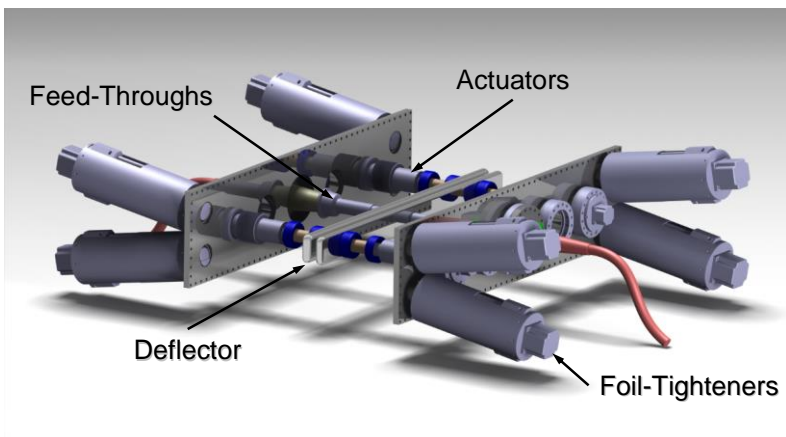
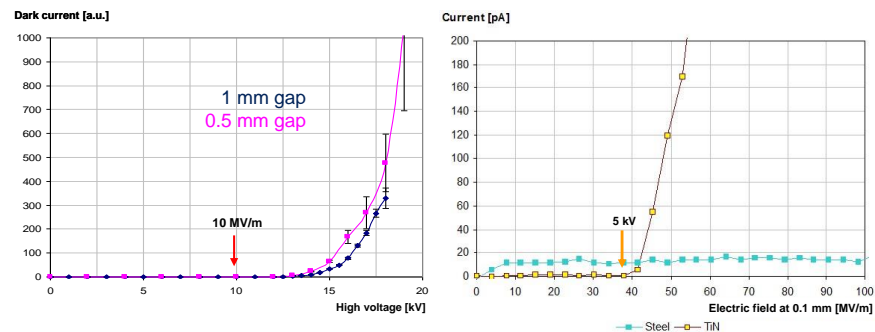
Electrostatic Deflector Development

Experimental setup

Results

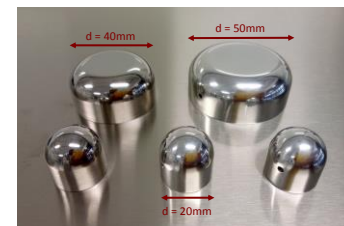


DARK CURRENT MEASUREMENTS



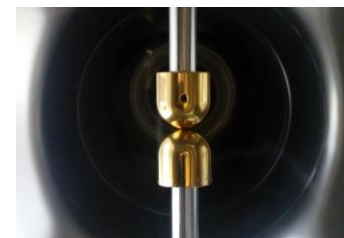
Polished stainless steel

- 240 MV/m measured at 0.05 mm with half-sphere vs. flat surface
- 17 MV/m with 17 kV at 1 mm two small half-spheres



Polished aluminum

- 30 MV/m measured at 0.1 mm two small half-spheres



TiN coating

- smaller breakdown voltage
- zero dark current