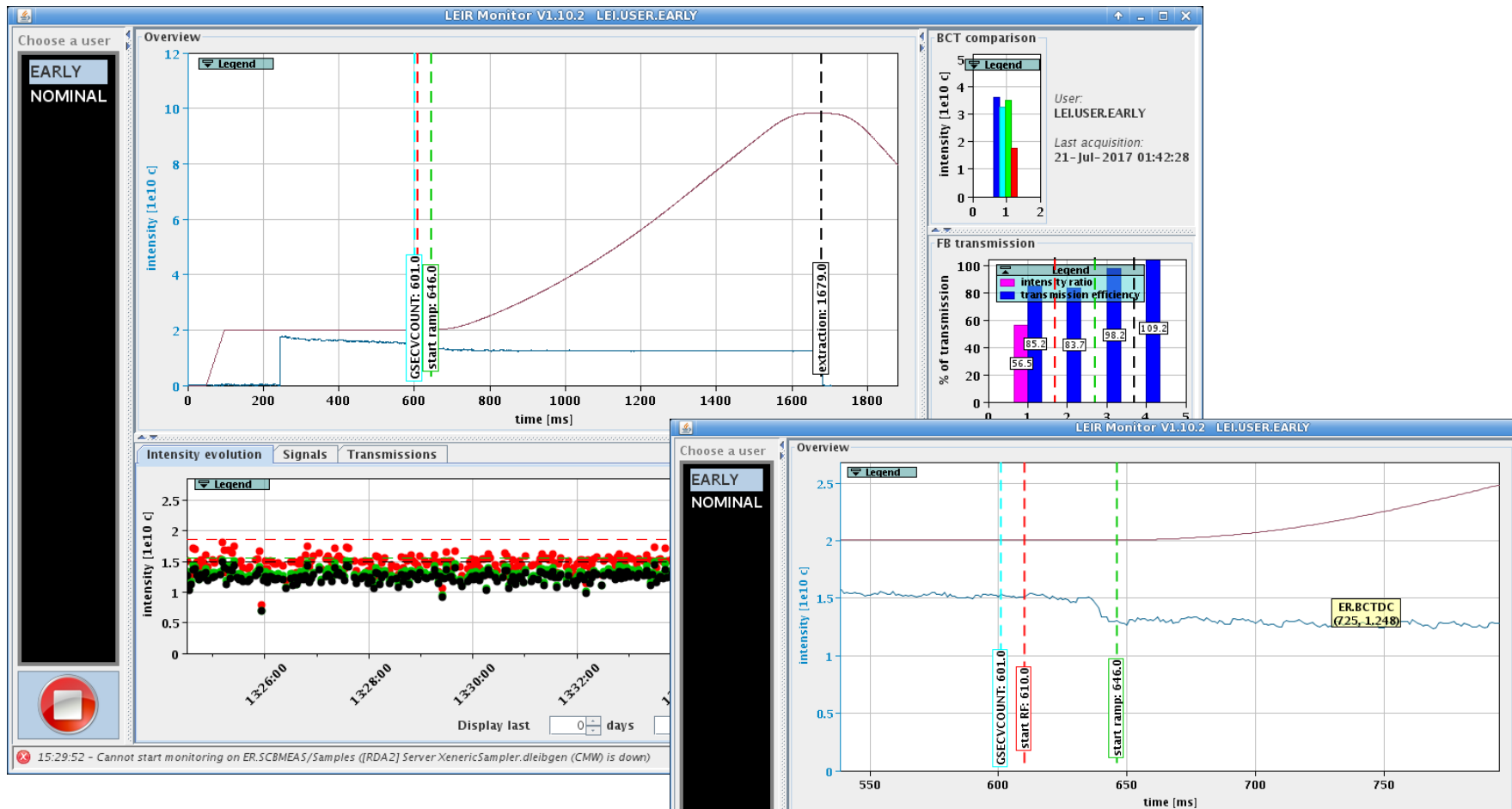


Xe beams

EARLY:

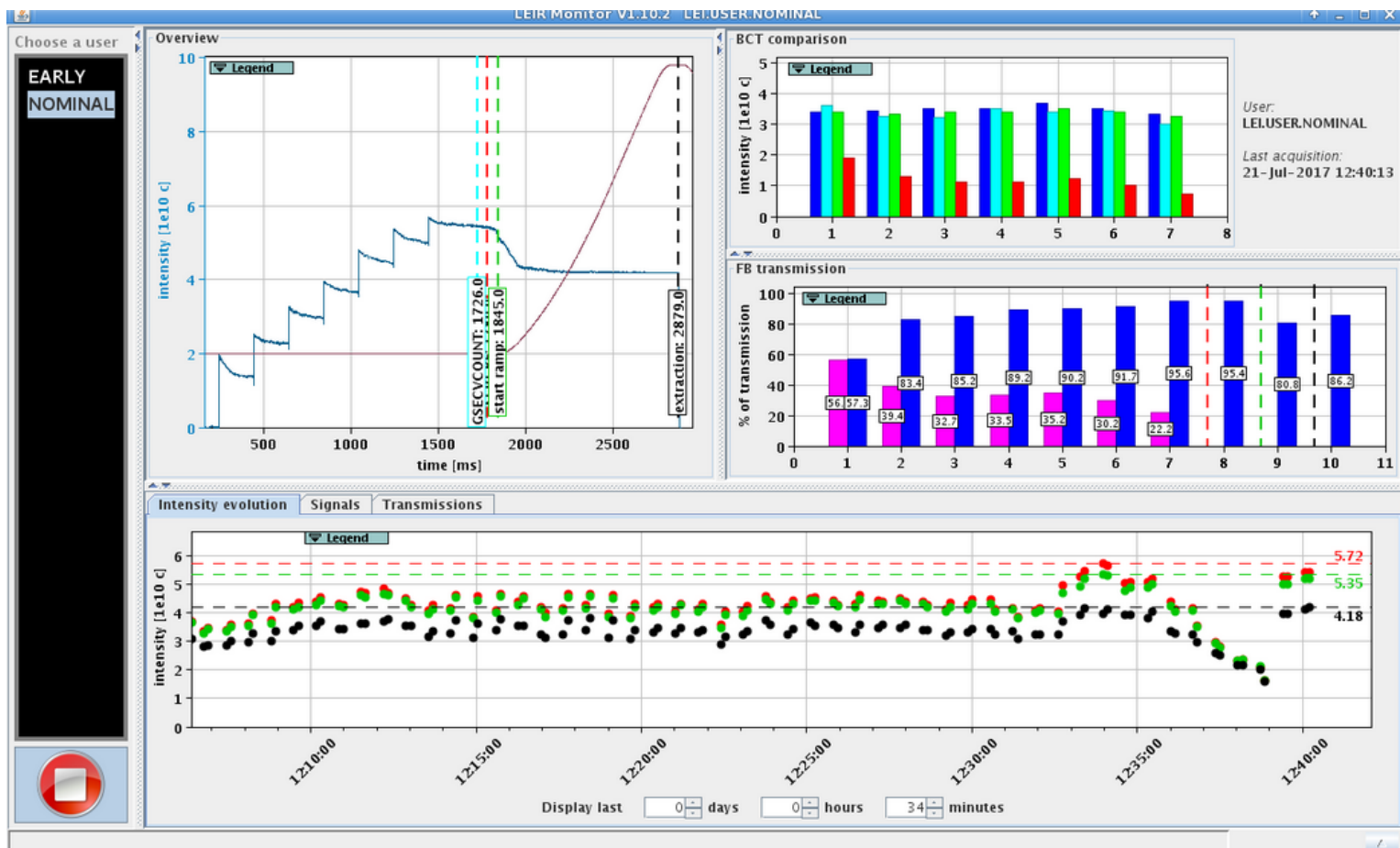
- Beam intensity optimized and delivered to PS.
- Small losses after capture being investigated.



Xe beams

NOMINAL:

- 7 injections, $\sim 6 \times 10^{10}$ c accumulated
- Ecooler current increased from 200 to 300mA to cool fast enough
- Need optimization in injection efficiency: ranges 60% \rightarrow 25% along the injections.



Studies

Joint Linac3 –LEIR MDs:

- Want to characterize initial beam parameters in LEIR from Linac3.
- RMS momentum spread of about $2e-3$ w/o ramping, and $\sim 6e-3$ with ramping cavity.
- Complex Schottky signal/noise interpretation, being investigated.
- Emittance measurements along the injection line planned.

RF:

- Voltage calibration measurements -> down to 1% agreement with models

LEIR – PS transfer line:

- Rematched to account strayfields effects. Measurements on 18/07 gave 100% transmission and remarkable agreement with optic models. Being followed up in view of operational implementation.

ITE BPMs:

- See M. Bozzolan talk.