

ACCU Report

Darin Acosta
(Non-member state
representative)



Advisory Committee of CERN Users

- <http://cern.ch/ph-dep-ACCU/>
- ACCU is the forum for discussion between the CERN Management and the representatives of CERN Users to review the practical means taken by CERN for the work of Users of the Laboratory.
- Francesco Navarra is the (outgoing) chairman
- Chris Onions represents the CERN Users Office
- Rohlf Heuer represents directly CERN management
- Committee membership is one appointed representative from each member state and 2 representatives from non-member states (formally by the DG)



ACCU Meetings In Past Year

- Dec.3, 2008 (82nd meeting)
 - Bat.40 extension presented
 - Outgoing and incoming CERN mgt. reports
- March 11, 2009 (83rd meeting)
 - ACCU presented its list of user priorities to CERN
- June 10, 2009 (84th meeting)
 - Presentation of results of CERN survey of users' priorities
- Sept.9, 2009 (85th meeting)
 - Update on actions taken since survey
 - Code of conduct proposal with focus groups
- Agendas and detailed meeting minutes:
 - <http://indico.cern.ch/categoryDisplay.py?categId=1058>



ACCU's Priority List of Concerns to CERN Management

Presented by chairman at March meeting:

1. transport (new cars for users, frequency of navettes)
2. accommodation (additional beds in hostel, Web booking)
3. more conference rooms, increase rooms equipped with videoconferencing
4. increase office space, burotel
5. childcare initiative, including help from HR
6. consolidation of general infrastructure
7. enlarge restaurant(s)
8. safety and security
9. library, training
10. dosimeters and dosimeter distribution
11. accessing host countries (attestation de fonctions etc.)
12. access control to the site (contracts, cards, computer accounts, retired users the area)
13. computing (using/extend Skype/EVO including phone conf., support from IT for individual users' PCs, common PCs (ex terminals)).
14. logistics and stores
15. ombudsperson initiative.



CERN Survey Results

- Long survey sent to all CERNois, 2058 responses
- Presented by the DG at June ACCU meeting

<http://indico.cern.ch/conferenceDisplay.py?confId=49727>



Priorities

The survey asked to identify the 5 MOST IMPORTANT needs

Selection as first priority (from the 21 options):

1. Accommodation inside CERN (29%)
2. Restaurants (11%)
3. General infrastructure (9%)
4. Office space (8%)

83% say number of Hostel rooms is insufficient

93% want web bookings

75% want cheaper accommodation

80% want expanded CERN car availability, most don't know about shuttle service

50% have difficulty finding videoconf room

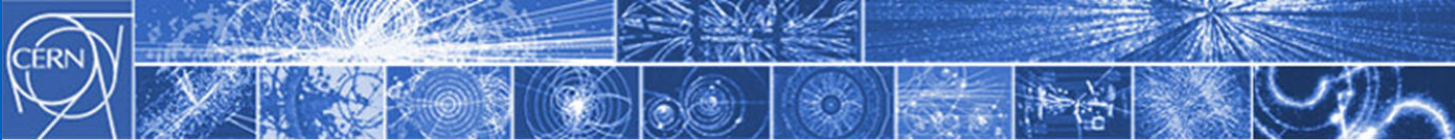
19% need childcare

More seating at Rest.1

5. child care (6%)
6. cheap accommodation (5%)
7. make CERN more "green" (6%)
8. bicycles (5%)
9. reservation (4%)
10. shuttle service (3.5%)

- Weighted of 1-5
5. reservation (4%)
 6. make CERN more green (6%)
 7. bicycles (5%)
 8. shuttle (3.5%)
 9. cheap accommodation (5%)
 10. child care (6%)

Status Report on Actions (Sept.)



Survey follow up

SHORT TERM	PILOT
Implement the WWW booking including revision of the booking rules.	GS
Create list of hotels close to CERN with their rate and make it available on the WWW, in the Users Office and in the PH secretariats.	GS
Negotiate corporate rates for nearby hotels.	GS
Study of new timetable (enlarged) for the regular shuttle (reducing taxi shuttle).	GS
Negotiate Corporate rates for cars at the airport.	GS
Negotiate the arrival of bus 28 to CERN.	GS
Study the extended opening of the French gate.	Implemented
Restaurant 1 - In progress ready in summer 2010.	GS
Restaurant 3 – Study of a fast interim solution.	GS
Purchase of new chairs.	GS-FP
Evaluation of stable Wi-fi on all site.	IT
Lockers close to Restaurant 1.	GS
Map with conference rooms available at CERN.	Implemented
Brochure on childcare on the region.	HR
Brochure on education in the region with comparison of the education path.	HR
Brochure for newcomers.	GS



<https://dg-directorate-office-website.web.cern.ch/dg-directorate-office-website/survey-followup/Actions/>

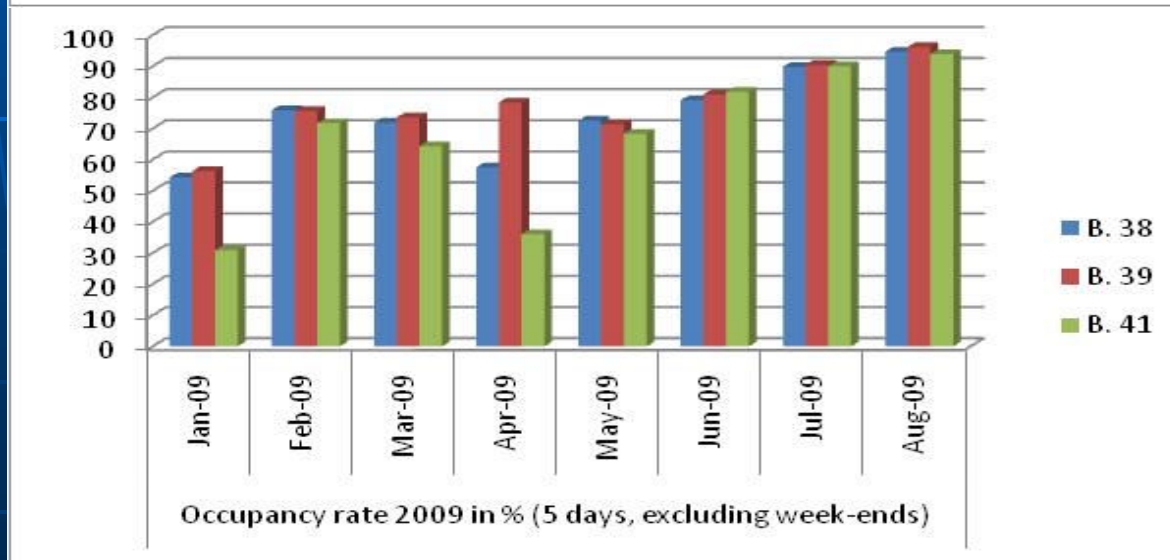
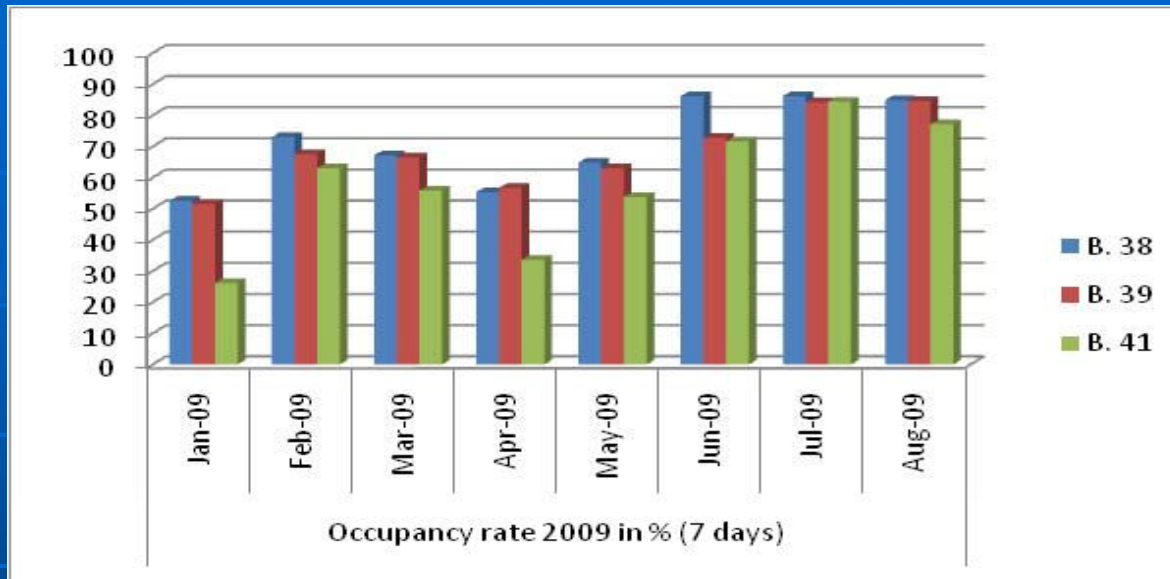


CERN Hostel Service

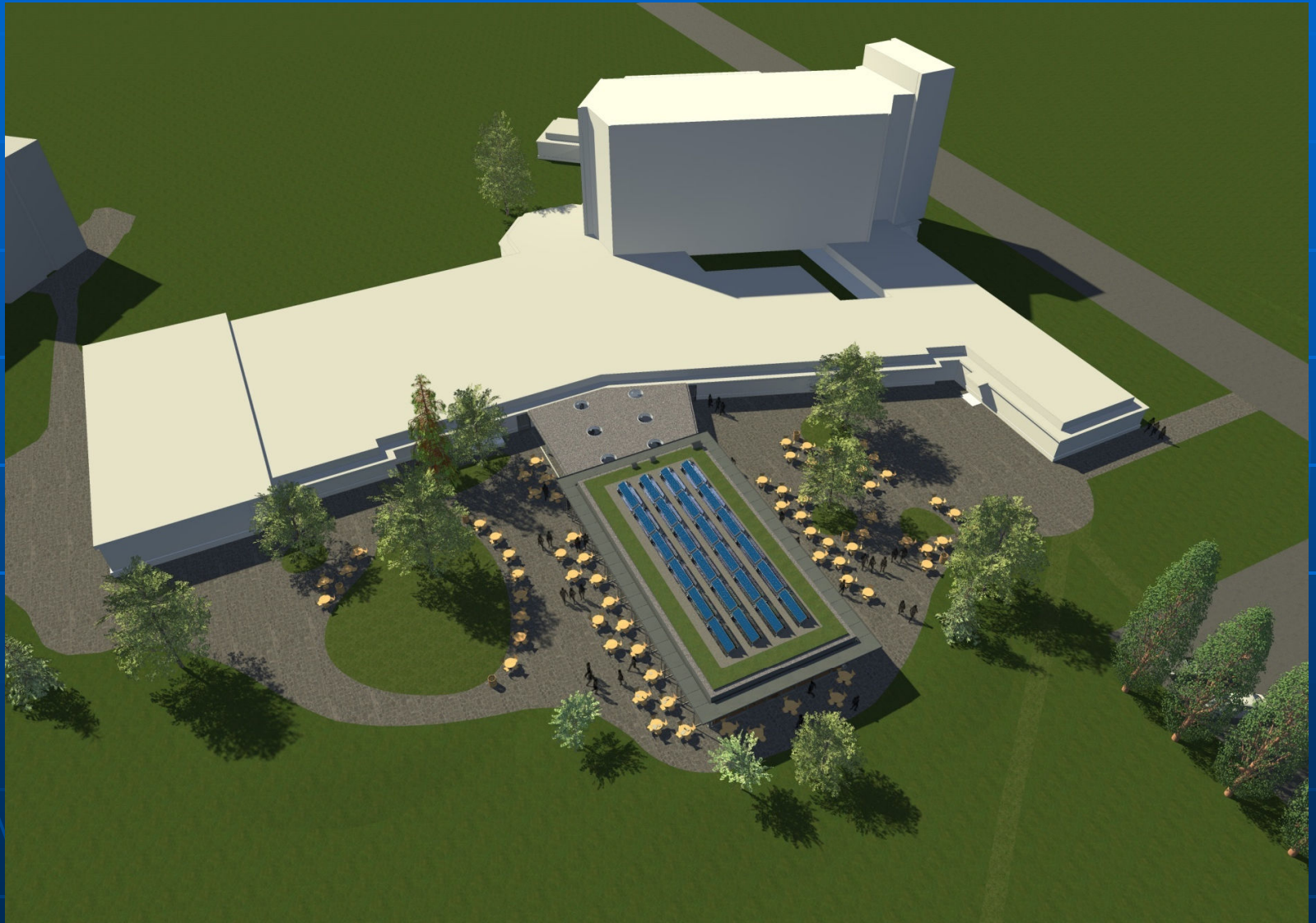
- New Hostel service website to be up and running this month
- New negotiated rates with hotels close to CERN (and listing of those with corporate rates on web site soon)
 - Prototype: <https://espace.cern.ch/hostel-service/default.aspx>
- WWW booking: December 2009. It will enable users to:
 - make individual booking [CERN login necessary]
 - Cancel their booking, up to 48h before arrival (modification only via the reception desk)
 - Guarantee their reservation with a credit card (currently NO Penalty for cancellation)
 - Old reservation methods still OK: phone, email, walk-in
- Renovation of Bat.38-39 launched, priority given to the sanitary installations and kitchens: end of work early 2010.
- A virtual store to provide CERN Hostel users with fresh food, in collaboration with NOVAE restaurant: Implementation foreseen Dec. 2009



Occupancy rate 2009 in %



Restaurant 1 Extension



Restaurant 1 Extension





Restaurant 1 – Work progress

- Renovation work (1/2 terrace) In October and November 2009
- Construction permit was sent to the authorities. Authorization is expected at the end of the year 2009
- Proposal for award of contract will be presented for approval in March 2010
- Construction work between April and October 2010
- Estimated end of work: October 2010

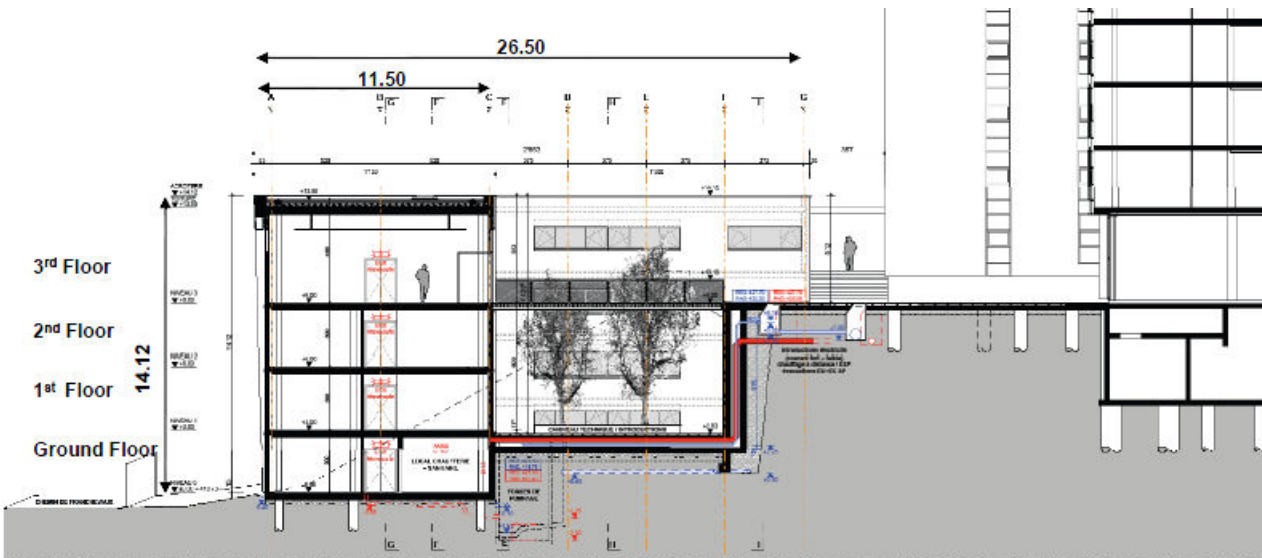
Bat.40 extension

- Scheduled completion before end 2010



	BUILDING 42	BLD 40
Number of floors	: 4	: 8
Ground surface	: 807 m ²	: 2000 m ²
Internal garden surface	: 271 m ²	: -
Gross total surface	: 3'214 m ²	: 12'075 m ²
Useful net surface	: 2'247 m ²	: 7'264 m ²
Net traffic and technical area	: 680 m ² (23%)	: 3714 m ² (33%)
Total net area	: 2'927 m ²	: 10'978 m ²
Working places	: 292	: 876
Including open space	: 136	: 120
Meeting rooms capacity	: 84	: 112
Cubic volume (SIA)	: 11'531 m ³	: 42'110 m ³
Cost per m ³ SIA	: 980 CHF	: 831 CHF
Cost per m ² built	: 3500 CHF	: 2900 CHF
Total cost	: 11'300 KCHF	: 35'000 KCHF
Estimated duration of the works	: 21-22 months	: 24 months
Heating	: CERN hot water network	: same

M. Poehler / TS-CE / 03.12.08



- 4 meeting rooms
- 292 work places



Transport

- Proposal for enlarged regular shuttle (navette) service by CERN
 - New itineraries with enlarged timetable created, awaiting ACCU comment and approval →
 - New shuttles + 3 drivers planned
 - Awaiting budget approval
 - If approved, implementation in January 2010
 - Temporary measure from Sept-Dec 2009:
 - Cover the LHC pits as it is already the case for CMS shifts since July 2009 (including nights and weekend)
- Next step is to study new models on car and bicycle use



Proposed Expanded Shuttle Service: Feedback requested

Every 45 minutes from 8 am to 6pm

Regular shuttle Meyrin-Prevessin-Meyrin

bat 500	→ Bat 40	→ Bat 55	→ Bat 865	→ Bat 892	→ F.H	→ Bat 892	→ Bat 55	→ Bat 504	→ Bat 184	→ Bat 30-112	→ Bat 188	→ Bat 555
8h00	8h01	8h02	8h09	8h10	8h17	8h24	8h34	8h36	8h38	8h40	8h41	8h43
8h45	8h46	8h47	8h54	8h55	9h02	9h09	9h19	9h21	9h22	9h24	9h25	9h27
9h30	9h31	9h32	9h39	9h40	9h47	9h54	10h04	10h06	10h08	10h10	10h11	<u>10h13</u>
10h30	10h31	10h32	10h39	10h40	10h47	10h54	11h04	11h06	11h08	11h10	11h11	11h13
11h15	11h16	11h17	11h24	11h25	11h32	11h39	11h49	11h51	11h53	11h55	11h56	11h58
12h00	12h01	12h02	12h09	12h10	12h17	12h24	12h34	12h36	12h38	12h40	12h41	12h43
12h45	12h46	12h47	12h54	12h55	13h02	13h09	13h19	13h21	13h22	13h24	13h25	13h27
13h30	13h31	13h32	13h39	13h40	13h47	13h54	14h04	14h06	14h08	14h10	14h11	14h13
14h15	14h16	14h17	14h24	14h25	14h32	14h39	14h49	14h51	14h53	14h55	14h56	14h58
15h45	15h46	15h47	15h54	15h55	16h02	16h09	16h19	16h21	16h22	16h24	16h25	16h27
16h30	16h31	16h32	16h39	16h40	16h47	16h54	17h04	17h06	17h08	17h10	17h11	17h13
17h15	17h16	17h17	17h24	17h25	17h32	17h39	17h49	17h51	17h53	17h55	17h56	17h58

from 7:45 am to 17:20 pm

Regular shuttle Meyrin-Prevessin-LHC Pits-Meyrin

bat 500	→ Bat 40	→ Bat 55	→ Bat 874	→ Bat 865	→ Bat 892	→ Bat 888	→ F.H	→ Bat SX2	→ Bat SX5	→ Bat SX8	→ F.H	→ Bat 55
7h45	7h46	7h47	7h54	7h55	7h56	7h58	8h06	8h14	8h29	8h49	x	9h00
9h00	9h02	9h03	9h10	9h11	9h12	9h14	9h22	9h30	9h45	10h05	x	10h15
10h30	10h31	10h32	x	x	x	x	x	10h42	10h57	x	x	<u>11h15</u>
13h00	13h02	13h03	13h10	13h11	13h12	13h14	13h22	13h30	13h45	14h05	x	14h15
14h15	14h16	14h17	14h24	14h25	14h26	14h28	14h36	14h44	14h59	15h20	x	15h30
15h45	15h46	15h47	15h54	15h55	15h56	15h58	16h06	16h14	16h29	16h49	17h10	17h20

LHC Shift 7 days/7 days (including nights)

bat 500	→ F.H	→ St Genis	→ Bat 892	→ Bat 818	→ P5	→ Bat 892	→ Bat 818	→ St Genis	→ F.H	→ bat 500
6h30	6h35				Ar 7h00-Dep 7h15			7h35	7h40	7h45
7h25	7h30	7h35	7h45	7h46	x	8h10	8h11	8h20	8h25	8h30
15h00	15h05	15h10	15h20	15h21	Ar15h40-Dep7h45	16h10	16h11	16h20	16h25	16h30
23h20	23h25	23h30	23h40	23h41	24h00	24h20	24h21	24h30	24h35	24h40

Every 30 minutes

Regular shuttle Meyrin- Airport

Bat 500	→ Aeroport	→ Bat 500	→ Aeroport	→ Bat 500	→ Aeroport	→ Bat 500	→ Aeroport	→ Bat 500	→ Aeroport	→ Bat 500
Dép	Ar -Dép	Ar -Dép	Ar -Dép	Ar -Dép	Ar -Dép	Ar -Dép	Ar -Dép	Ar	Ar -Dép	Ar
8h00	8h20-8h30	8h50-9h00	9h20-9h30	9h50-10h00	10h20-10h30	10h50-11h00	11h20-11h30	11h50		
13h00	13h20-13h30	13h50-14h00	14h20-14h30	14h50-15h00	15h20-15h30	15h50-16h00	16h20-16h30	16h50-17h00	17h20-17h30	17h50

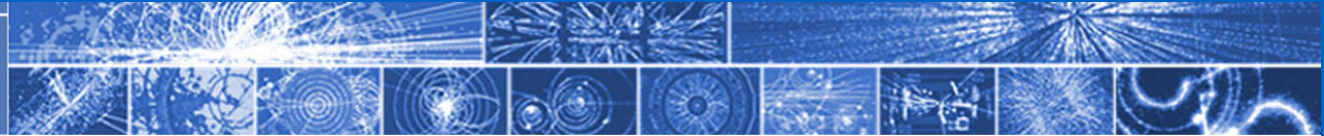
To be noted every ten minutes: connection between Airport and Station



Code of Conduct

- Project initiated by HR upon request of the Director-General
- Scope: preparation via collaboration and consultation, and subsequent approval, of the Code in December 2009
- Why?
 - Enlargement of CERN, increased public scrutiny, common standards of behaviour, enhanced transparency, prevention, requested by ACCU (Ombudsman initiative)
- What should be addressed and to whom does it apply?
 - Behaviours on-site and externally of members of the CERN professional community
 - Code should be applicable to CERN employees, the user community and subcontractors

Code of Conduct



Simplified Project Timeline 2009

- ✓ **August:** Prepare project charter, planning, meet with Enlarged Directorate and Project Reference Group (User community representative)
- September:** Launch focus groups (7 groups including one with users)
(1 per expt. And geographical region)
- October:** Complete focus groups and analyze data
- November:** Draft Code of Conduct
- December:** Finalize Code of Conduct for endorsement by ED and CCP

*PRG will be kept updated throughout the process
Additional work in 2010 on updating internal rules
Training required in 2010 to support the “cultural shift”*



Dosimeters

- There has been a shortage of dosimeters from 2006—2008
- Additional dosimeters purchased in 2009 from funds from LHC expt funds (excl. CMS), and more to be purchased by CERN.
- Plan to continually increase number of useable dosimeters to 6300 from 2010 on
 - According to information from RSO, sufficient to serve the LHC community.
 - Abandon priority lists as of 1 November 2009 (trial)
- Weekend hours under discussion
- Increased the frequency of the radiation safety training course from 1-2/month to 1/week and retraining can be done via the web



Users Office News

- Note that since Switzerland joined the EU Schengen, visa procedures have changed
 - Info on Users Office web site
- Users with a Swiss Attestation de Fonctions or the newer Carte de Legitimation must have a French card ("Titre de Séjour Spécial" or "Attestation de Fonctions") issued by the French Ministry of Foreign Affairs
 - Otherwise CERN contract may be terminated.
 - Such users should come to the Users office immediately to complete procedure
- Reminder sent to TEAM leaders pointing them to the registration information page on the web site to better prepare new users upon arrival



Further News and Info

- Library journal subscriptions did not go down in 2009 (90 paper, 1300 online)
- Open access initiative, SCOAP3, has >60% of the necessary funding pledged
- All 3 levels of safety courses are now online
 - <http://sir.cern.ch/>
- Information from CERN Human Resources for newcomers and families, etc.
 - <http://www.cern.ch/hr-services/>
- Wireless @ CERN
 - IT has concentrated on improving coverage in open areas (meeting rooms, restaurants, lobby, etc) and deploying more recent and more powerful base stations in Bat. 4, 32, 40, 60, Restaurant #1, council chamber, main amphitheatre and experiments control rooms by Q1 2010.



Summary

- Your CERN user concerns and input are very welcome!
 - Email: Darin.Acosta@cern.ch
- Also, as a community, what further issues would you like to see addressed?

- Next meeting: Dec. 9, 2009
 - Thanks to Kirsten Tollefson for taking notes from the September ACCU meeting