

# LINAC 2012

2012 Linear Accelerator Conference

Sep 9 - 13, 2012

Eilat, Israel

# Our Geographical Location



# Soreq Nuclear Research Center



[http://www.soreq.gov.il/default\\_EN.asp](http://www.soreq.gov.il/default_EN.asp)

August , 2006

Soreq NRC, Israel

# SARAF –

# Soreq Applied Research Accelerator Facility



# The Proposed LINAC2012 Venue:



# Eilat, Israel



# The Proposed LINAC2012 Venue: Eilat, Israel



- ☀ **Eilat, Israel's Riviera on the Red Sea, is known all over the world as the city where the sun shines all year.**
- ☀ **Eilat is Israel's southernmost city, situated on a triangle created by the joining of the Sinai Mountains, the Arava desert and the blue waters of the Red Sea.**







Eilat Airport (ETH)







- ☀ **More than 3 million visitors arrive in Eilat annually to enjoy the warm hospitality offered by more than 50 modern hotels, with prices to suit every budget.**
- ☀ **Eilat city offers fabulous restaurants, shopping centers and cinemas, that put Eilat on the world tourism map, while maintaining its special qualities.**



- ❖ Charter flights from Europe to Eilat (ETH).
- ❖ Commercial flights from all over the world to Ben-Gurion Airport, Tel-Aviv (TLV) and then:
  - ❖ Commercial flights from Ben-Gurion to Eilat (~45 minutes)
  - ❖ Bus from Tel Aviv New Central Station to Eilat (~5 hours)
  - ❖ Rent a car at Ben-Gurion, return at Eilat
  - ❖ We may offer special conference buses from Ben-Gurion to Eilat (extra fee), on the day before the conference, on times depending on delegates flights

**Note:** Some flights to Eilat (both domestic and international) arrive at Oovda Airport (VDA) near Eilat. Shuttles to Eilat available (~45 minute drive)

# Accommodation prices November 2008

	Hotels	Single Room	Double Room
	<b><u>Dan Eilat Hotel</u> 5 ★</b> (Conference venue, registration & hospitality, and parallel sessions)	150-170\$	200-220\$
	<b><u>Dan Panorama Hotel</u> 5 ★</b> (parallel sessions) Walking distance from the venue	105\$	115\$
	<b><u>Holiday Inn Patio</u> 3 ★</b> 15 minutes walk from venue, 5 minutes by car	80\$	100\$
	<b><u>Club Hotel Eilat</u> 3 ★</b> 15 minutes walk from venue, 5 minutes by car	<b>SOLD OUT</b>	<b>SOLD OUT</b>

All rates are per room and per night, including buffet breakfast, service and taxes.

Additional low cost 4-bed apartments for students – 36\$ (bed only)  
**Isrotel Riviera Club 3 ★** (walking distance from venue)

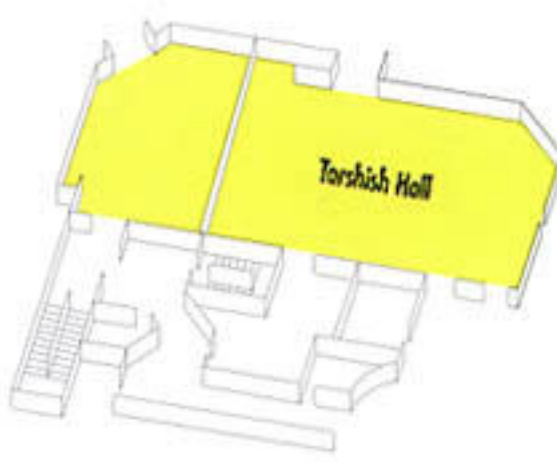
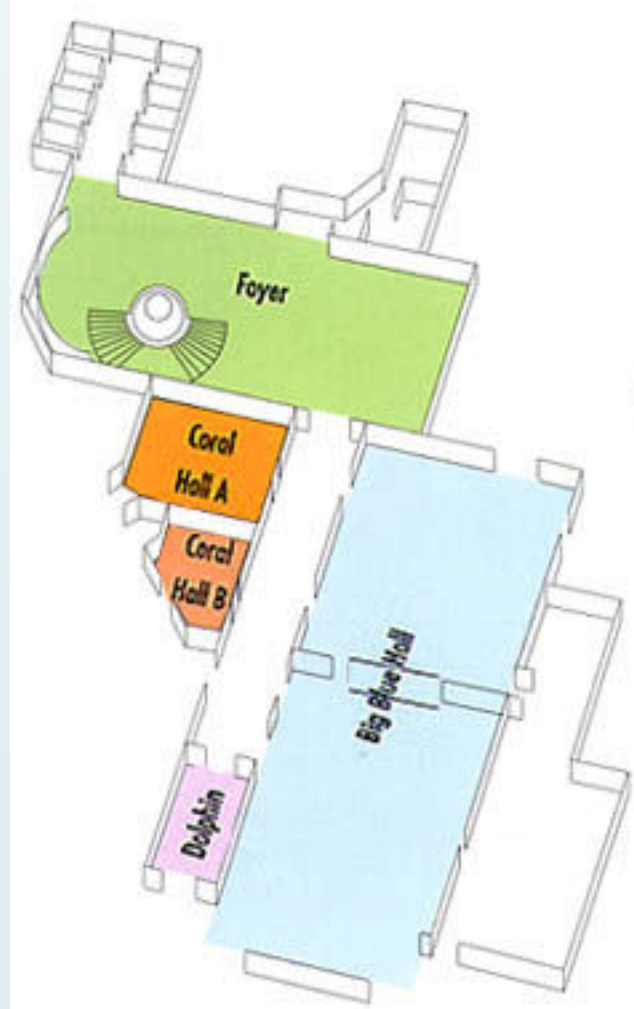
# Accommodation map November 2008



# Conference Venue – Dan Eilat Hotel



# Conference Venue – Dan Eilat Hotel



Hall	M2	Theater	Class Room	Cocktail	Dinner	Buffet
Big Blue Hall	530	700	350	700	450	370
Foyer	310	---	---	430	---	---
Coral A	85	95	70	110	70	50
Coral B	46	50	37	55	40	---
Dolphin	44	50	34	55	40	---
Tarshish	360	500	220	500	300	250

# LINAC 2012 Initial Team

- Conference Chair – **Dr. Israel Mardor**
- Scientific Program Committee Chair – **Dr. Dan Berkovits**
- Local Organizing Committee Chair - **TBD**
- Conference Coordinator – **Mrs. Lea Ben Ari**
- Conference Editor – **Mrs. Ilanit Hoffman Moran**



## ■ Conference

- Welcome reception, Saturday evening, Sep 8<sup>th</sup>, 2012
- Program begins on Sunday morning, Sep 9<sup>th</sup>, 2012
- Program ends on Thursday noon, Sep 13<sup>th</sup>, 2012

## ■ Transfer from Eilat to Central Israel

- Thursday, Sep 13<sup>th</sup>, 2012, afternoon

## ■ SARAF Tour

- Friday, Sep 14<sup>th</sup>, 2012, from morning through early afternoon

Dates are optimal between the August vacation season and the Jewish Holidays that start on Sunday, Sep 16<sup>th</sup>, 2012 (book your return flights well in advance...)