

PVSS System for RD51 TestBeam

K.Karakostas F.Asvesta Y.Tsipolitis
T. Alexopoulos
NTUA



RD51

Concept

- **Crate (SY-1527)**
 - a1821n (3x12 channels)
 - a1526n (1x6 channels)
 - a1513a (1x6 channels)
- **PVSS Platform & JCOP Framework**
 - Monitor, parameterize, archiving, plotting iMon/vMon, alert handling.

Main Window

- Channel choosing
- Mode of use.
- Terminate the application.



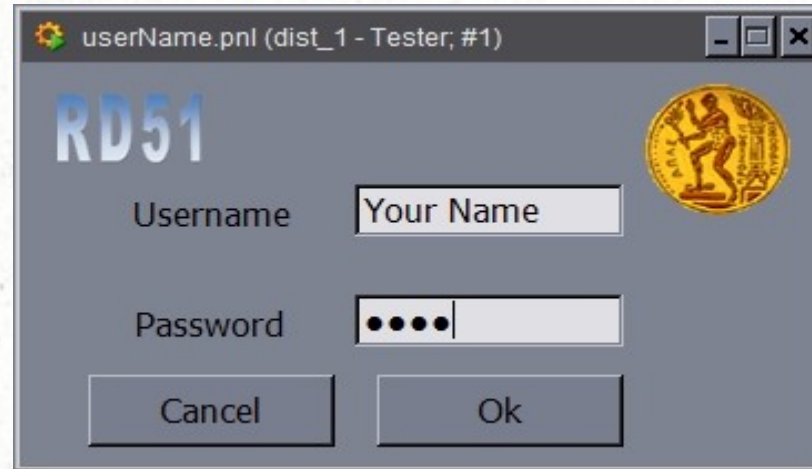
Simple Mode

- Status, name, vMon, iMon.
- Plotting vMon, iMon.
- Close the window.



Expert Mode (i)

- User name and password required.
- Logfile.



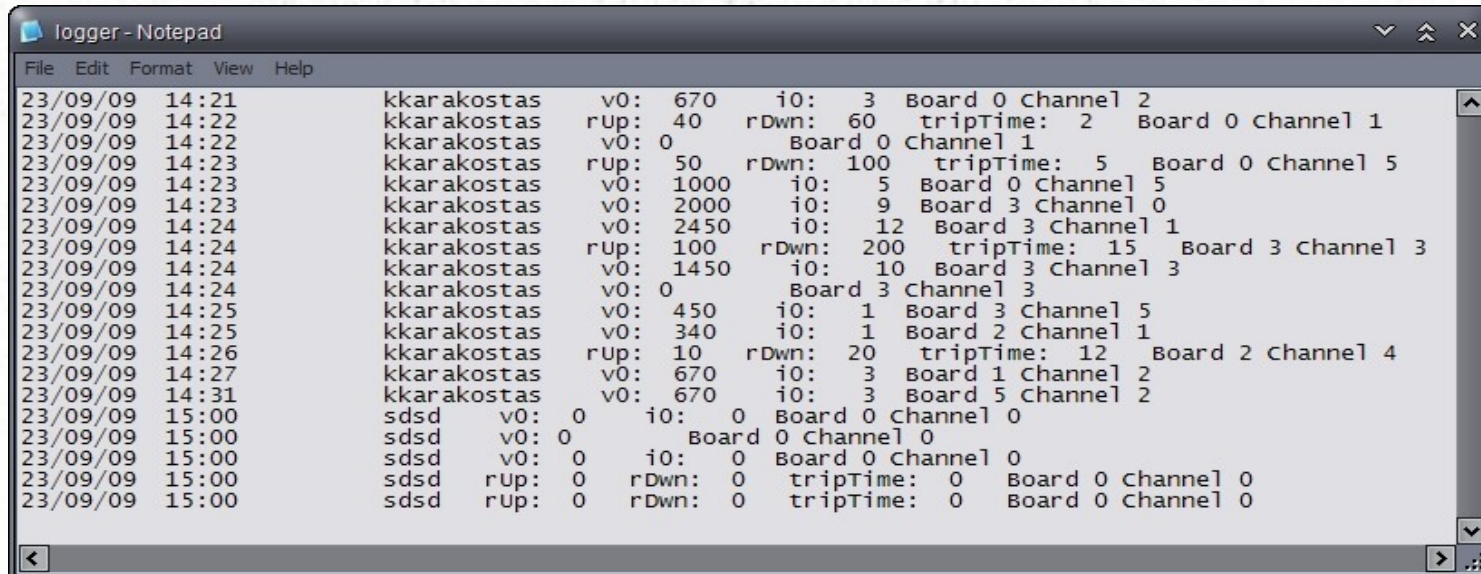
userName.pnl (dist_1 - Tester; #1)

RD51

Username

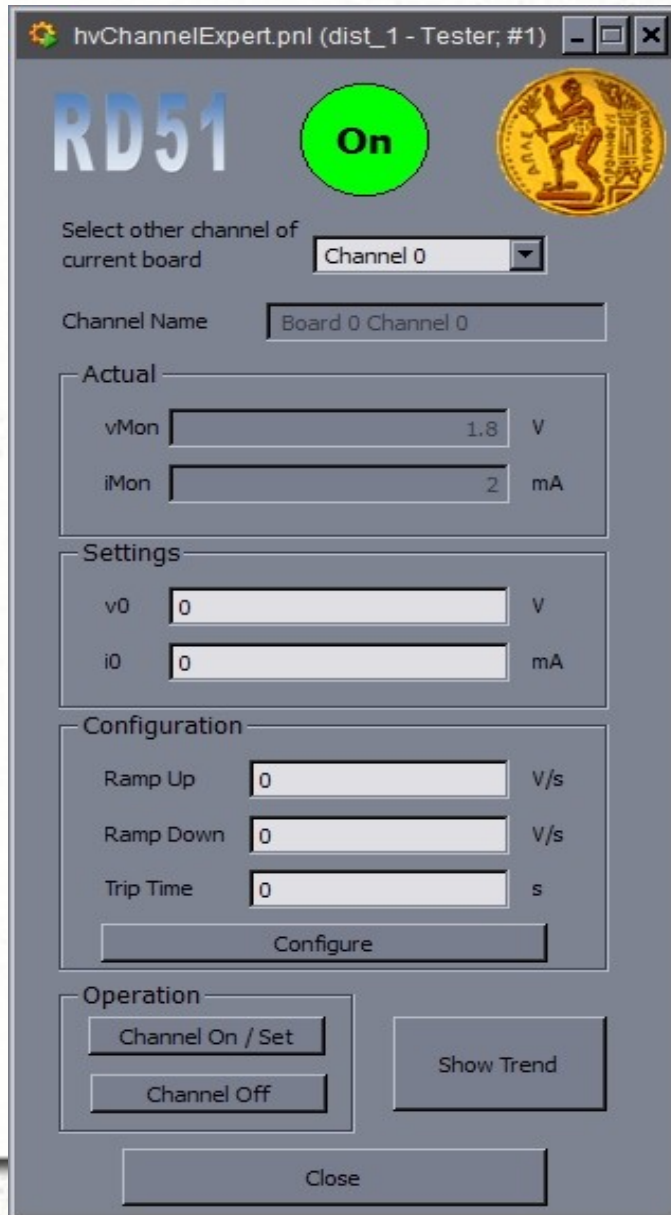
Password

Cancel Ok



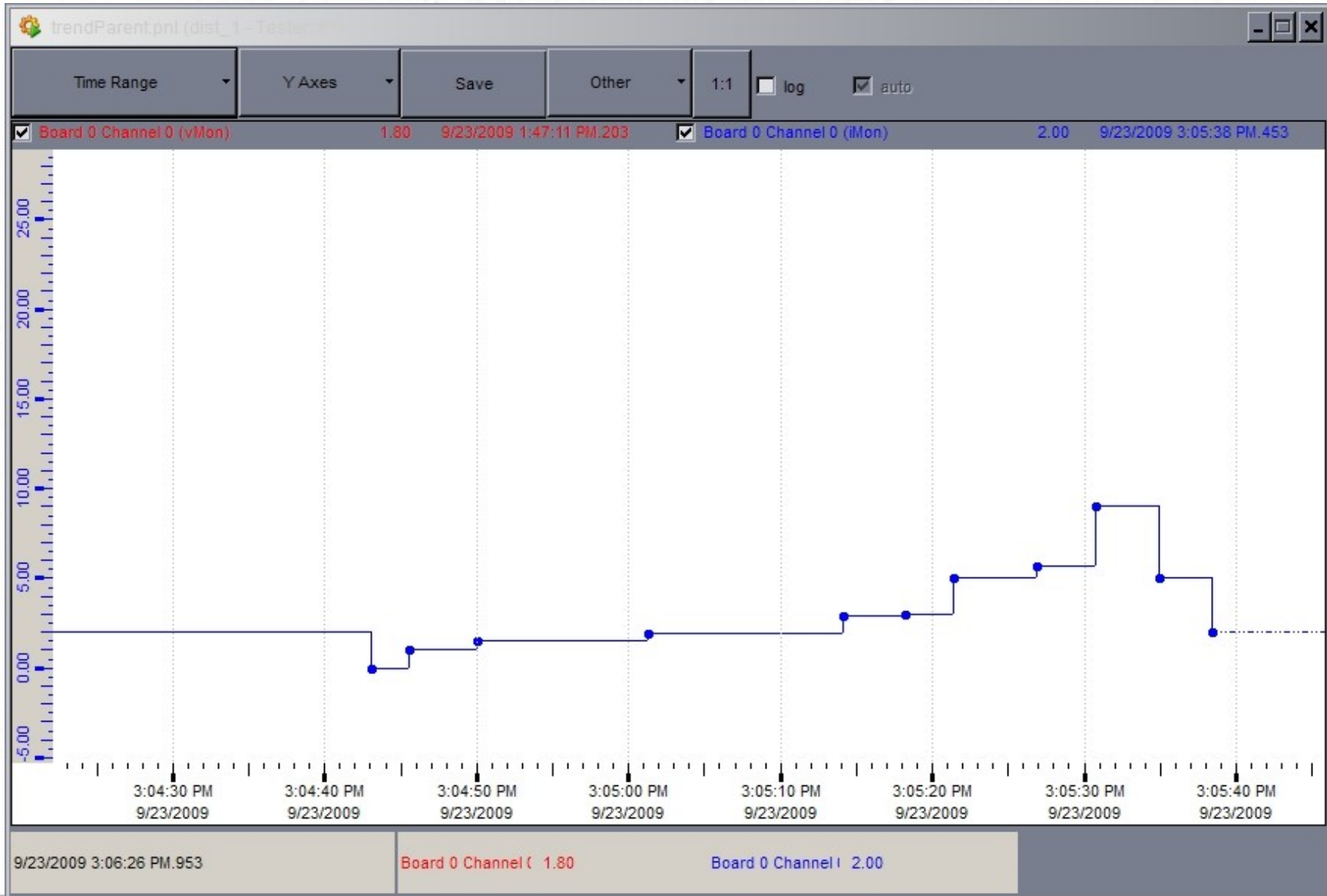
```
logger - Notepad
File Edit Format View Help
23/09/09 14:21 kkarakostas v0: 670 i0: 3 Board 0 Channel 2
23/09/09 14:22 kkarakostas rup: 40 rDwn: 60 tripTime: 2 Board 0 channel 1
23/09/09 14:22 kkarakostas v0: 0 Board 0 channel 1
23/09/09 14:23 kkarakostas rup: 50 rDwn: 100 tripTime: 5 Board 0 channel 5
23/09/09 14:23 kkarakostas v0: 1000 i0: 5 Board 0 Channel 5
23/09/09 14:23 kkarakostas v0: 2000 i0: 9 Board 3 Channel 0
23/09/09 14:24 kkarakostas v0: 2450 i0: 12 Board 3 Channel 1
23/09/09 14:24 kkarakostas rup: 100 rDwn: 200 tripTime: 15 Board 3 Channel 3
23/09/09 14:24 kkarakostas v0: 1450 i0: 10 Board 3 Channel 3
23/09/09 14:24 kkarakostas v0: 0 Board 3 Channel 3
23/09/09 14:25 kkarakostas v0: 450 i0: 1 Board 3 Channel 5
23/09/09 14:25 kkarakostas v0: 340 i0: 1 Board 2 Channel 1
23/09/09 14:26 kkarakostas rup: 10 rDwn: 20 tripTime: 12 Board 2 Channel 4
23/09/09 14:27 kkarakostas v0: 670 i0: 3 Board 1 Channel 2
23/09/09 14:31 kkarakostas v0: 670 i0: 3 Board 5 Channel 2
23/09/09 15:00 sdsd v0: 0 i0: 0 Board 0 channel 0
23/09/09 15:00 sdsd v0: 0 Board 0 channel 0
23/09/09 15:00 sdsd v0: 0 i0: 0 Board 0 channel 0
23/09/09 15:00 sdsd rup: 0 rDwn: 0 tripTime: 0 Board 0 Channel 0
23/09/09 15:00 sdsd rup: 0 rDwn: 0 tripTime: 0 Board 0 Channel 0
```

Expert Mode (ii)



- Status, channel, Actual, Settings, Configuration.
- Turn On/Off, Plotting iMon/vMon.
- Select different channel from board.
- Close window.

Plot



Conclusions

- The Slow-Control application was developed by NTUA and will be ready for the RD51 Test-Beam.
- This is version 0.0 and any suggestions are welcomed.