



TANB Integration – LS2 BLM Relocation Proposal

C4R8 and C4L8

M. Gonzalez de la Aleja, P. Santos Diaz

LS2 - TANB area - C4R8



BLM relocation proposal for L8

LS2 layout

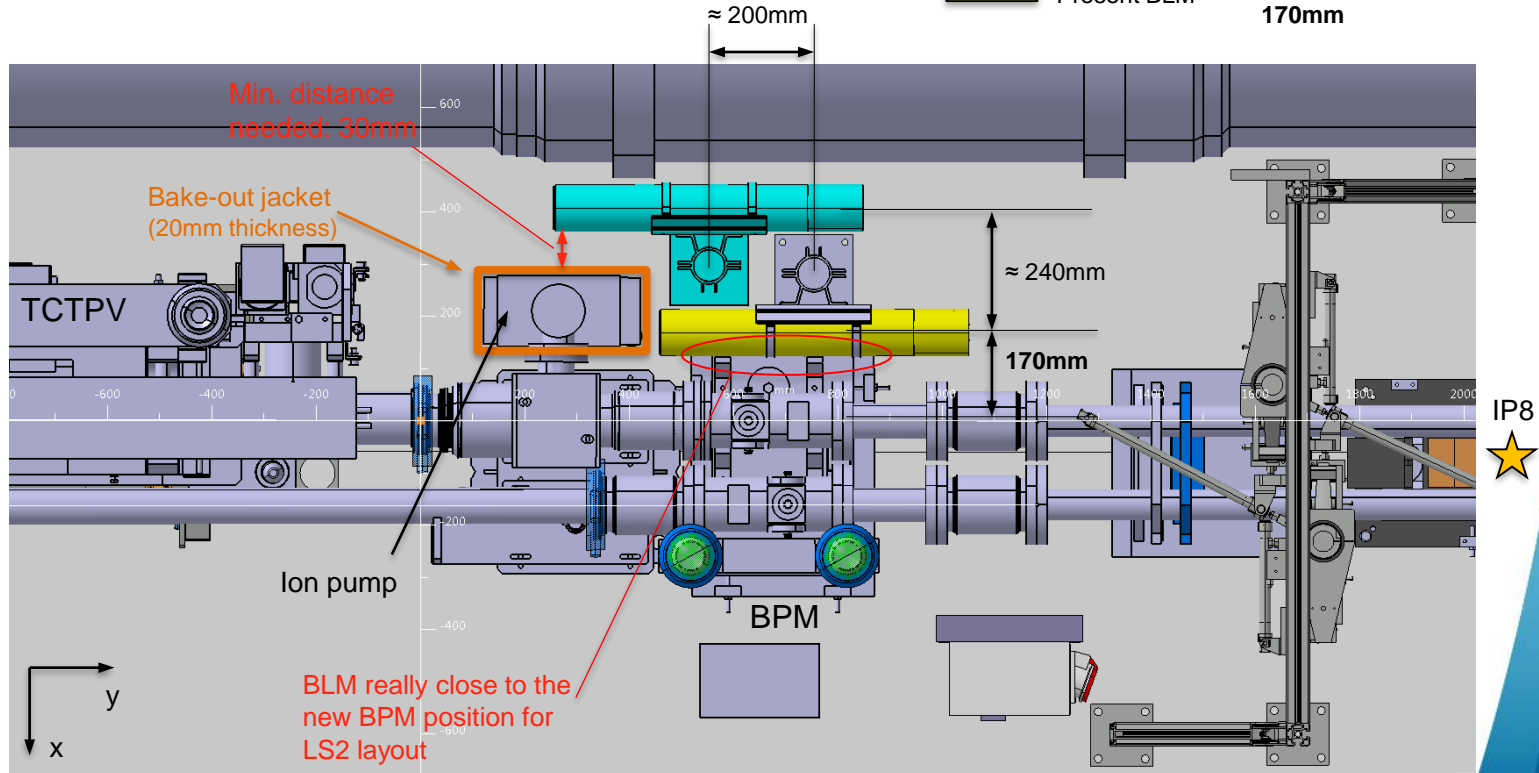
Proposal:

Move BLM:
- about 200mm towards the TCT (-y)
- some mm towards the QRL (-x)

Just a minimum distance of ≈ 30 mm around the ion pump must be respected.

 Proposal
 Present BLM*

*According to 3D model for L8, distance between BLM axis and Beam axis: 170mm



IP8
★

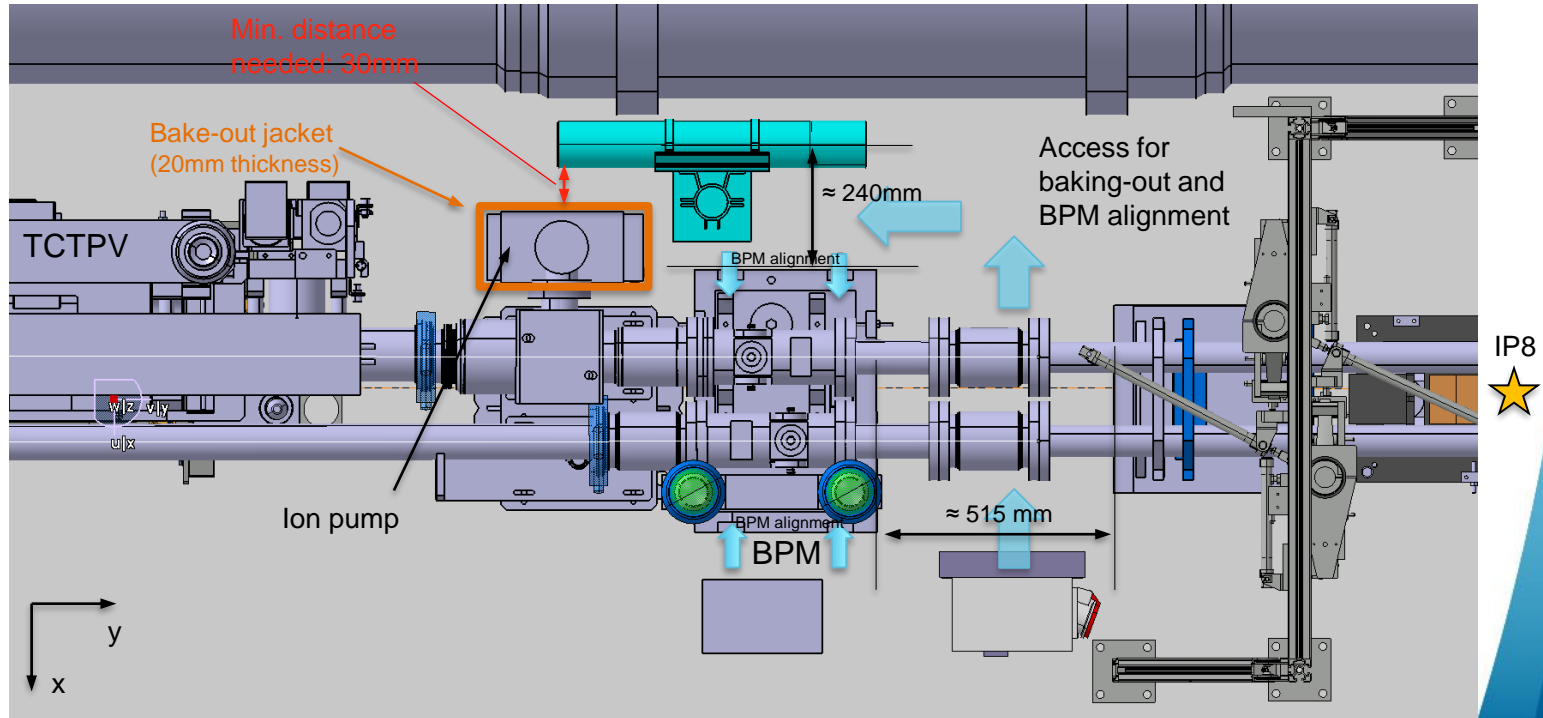
LS2 - TANB area - C4R8

BLM relocation proposal for L8

LS2 layout

The aim is to provide an easier access for:

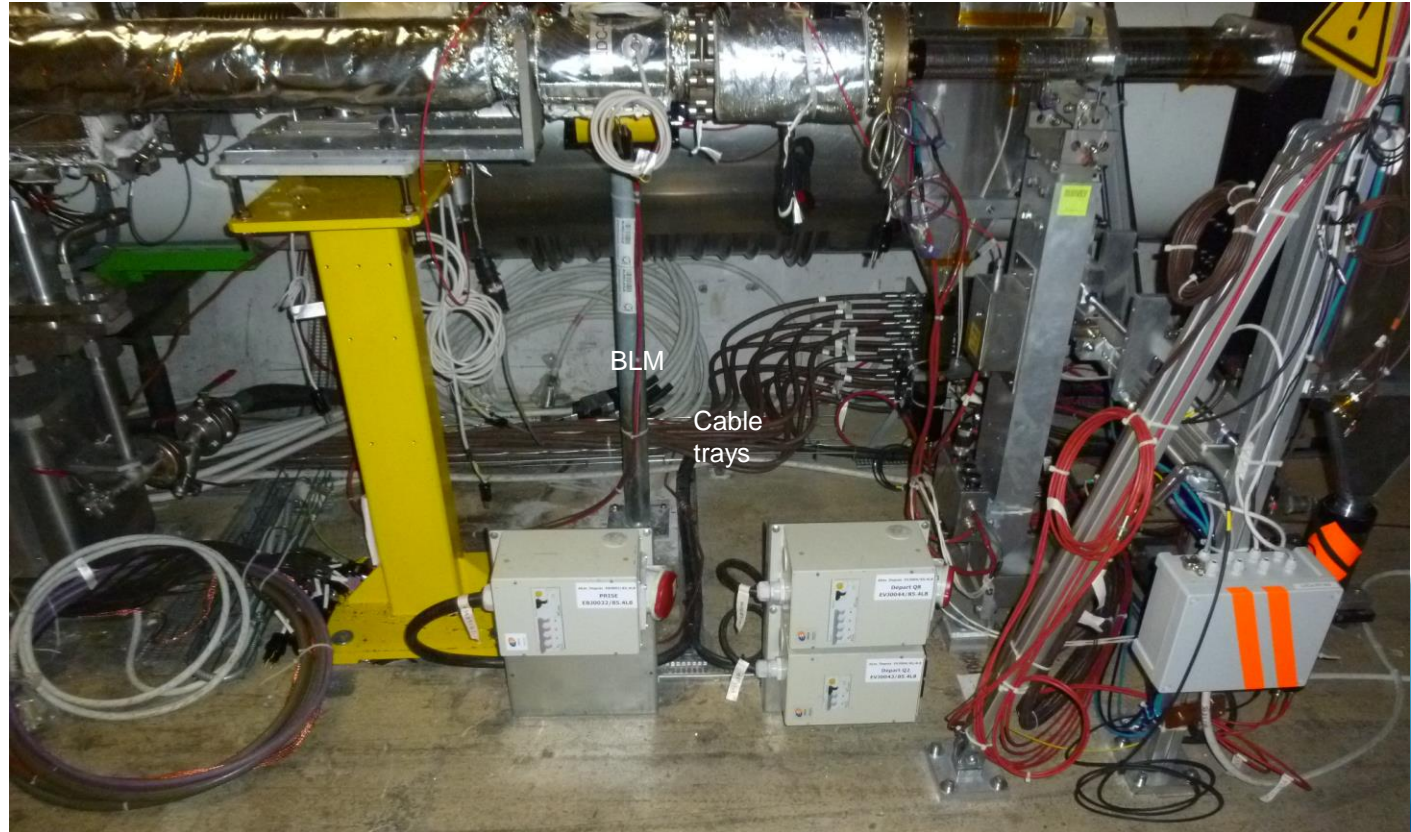
- installation of bake-out jacket
- Alignment of BPM



LS2 - TANB area - C4R8

BLM relocation proposal for L8

LHC Pictures L8
(Sept 2016)



LS2 - TANB area - C4R8

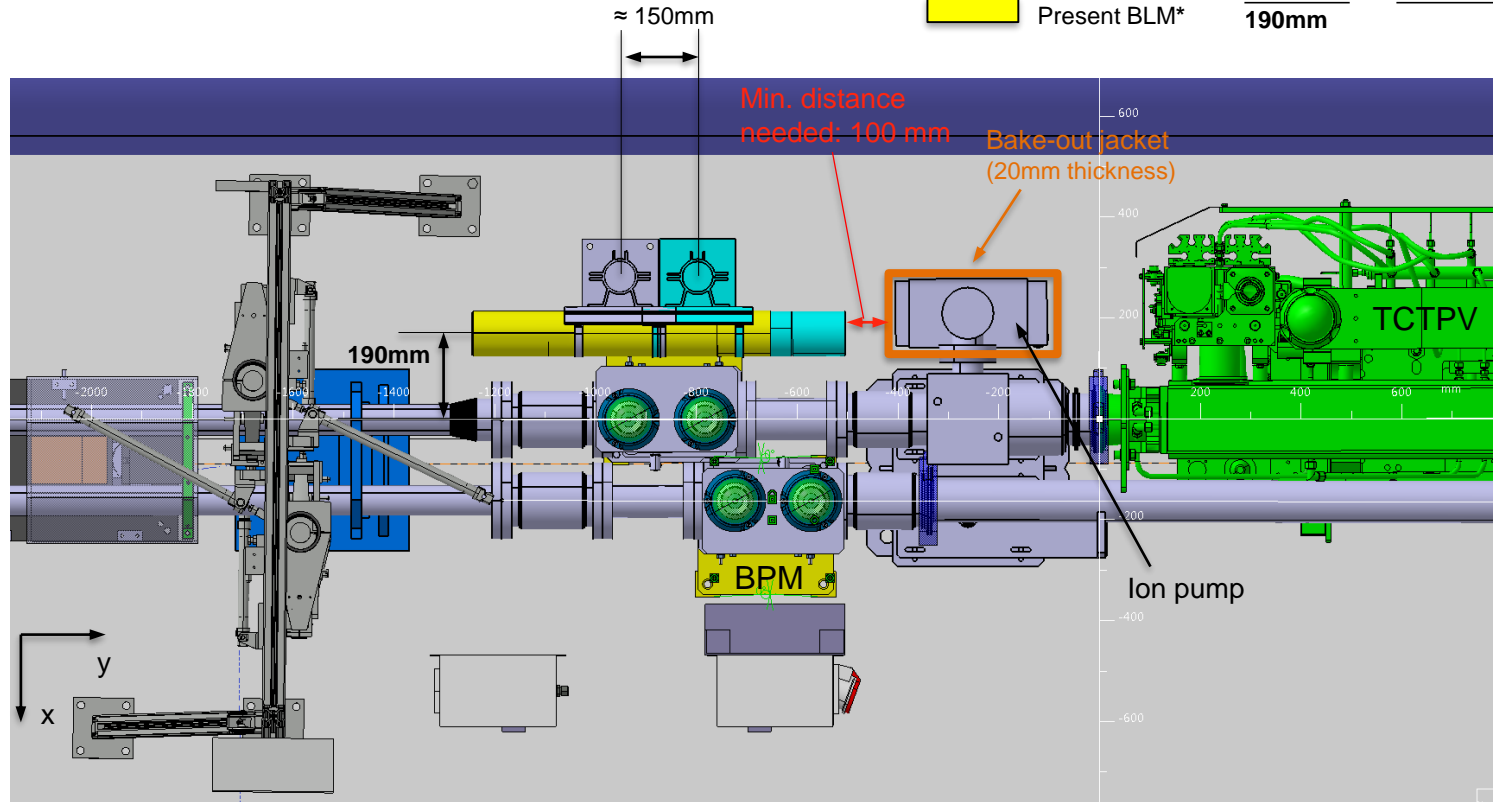
BLM relocation proposal for R8

LS2 layout

Proposal:

Move BLM:
- about 150mm towards
the TCTPH (y)

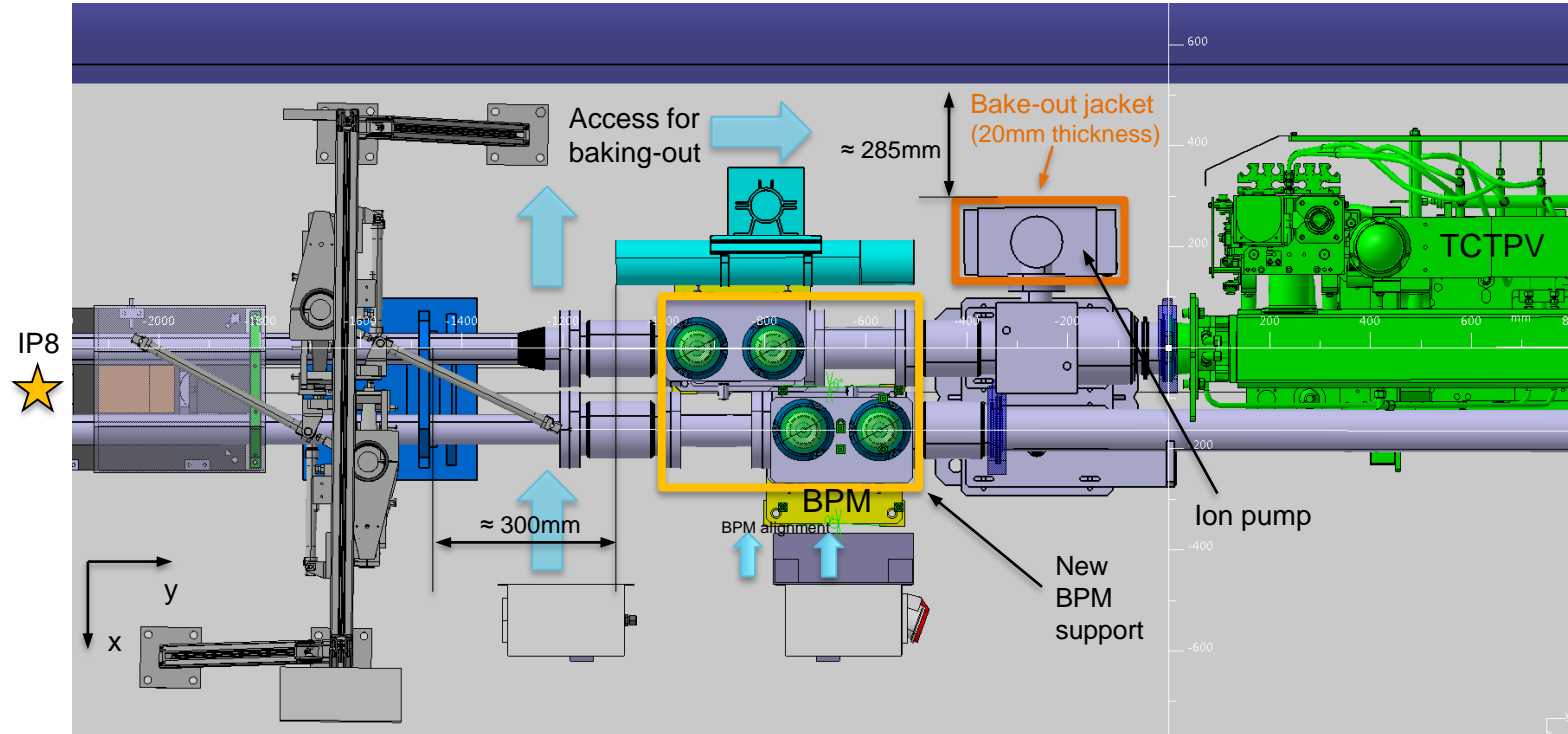
IP8
★



LS2 - TANB area - C4R8

BLM relocation proposal for R8

LS2 layout



LS2 - TANB area - C4R8

BLM relocation proposal for R8

LHC Pictures R8
(Sept 2016)

