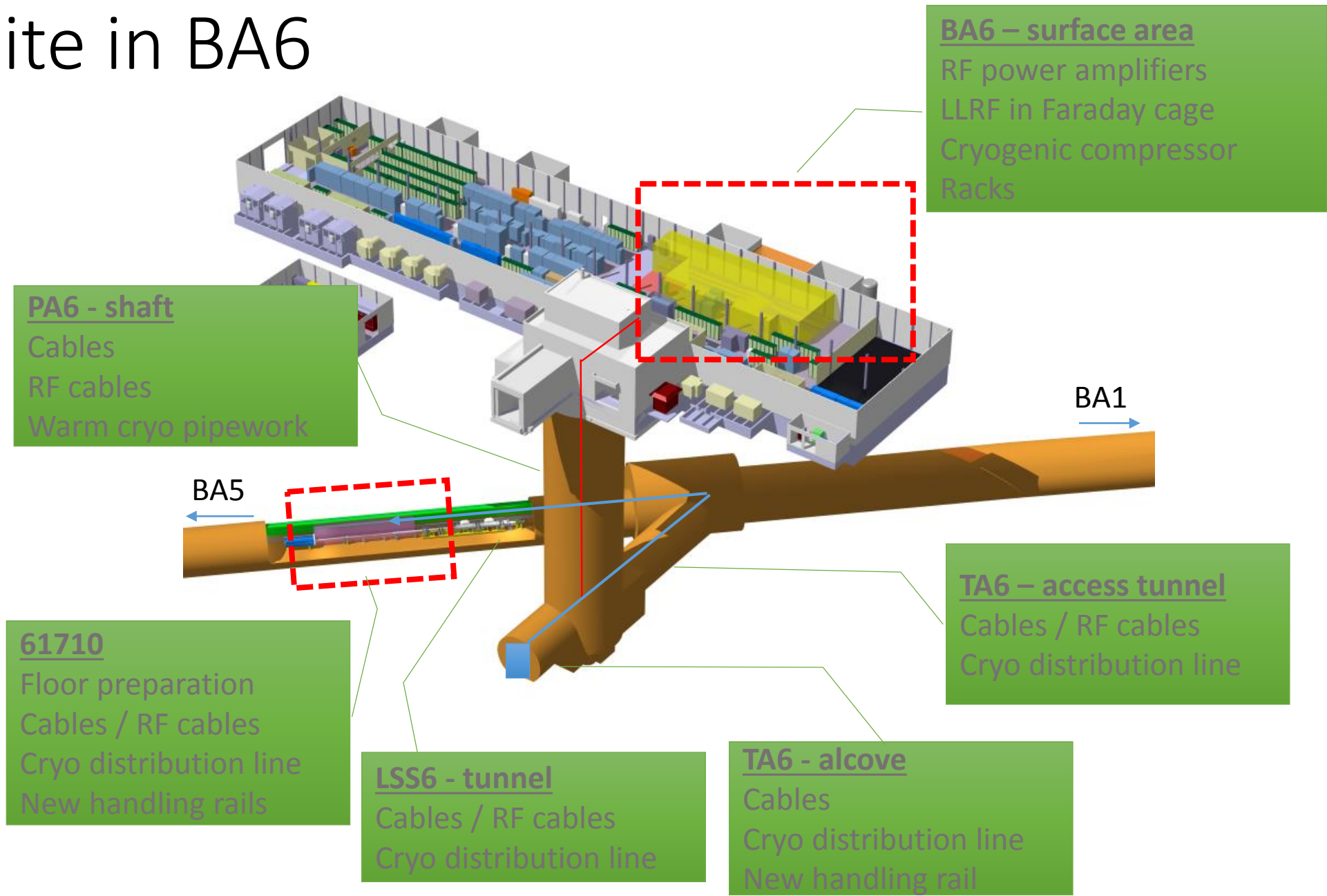
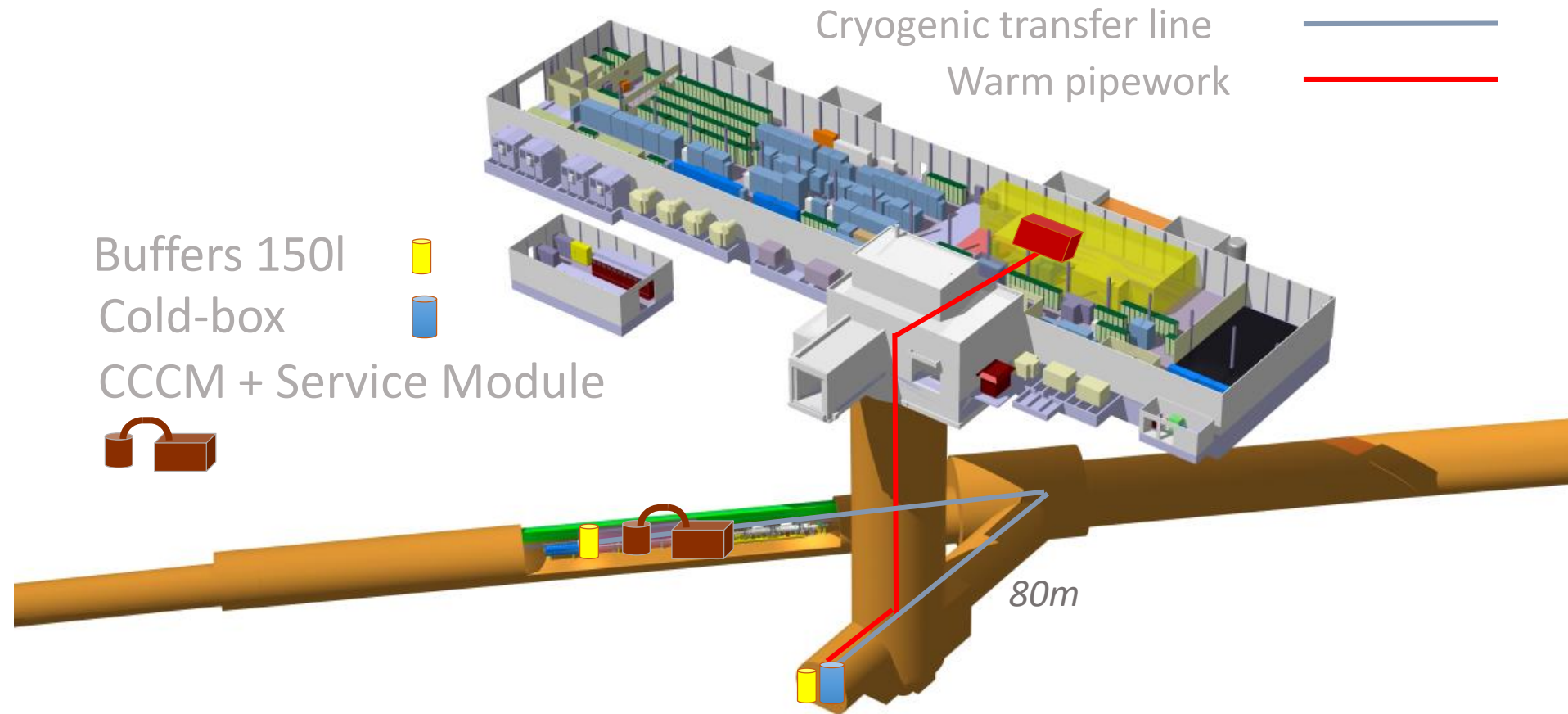


Worksite in BA6

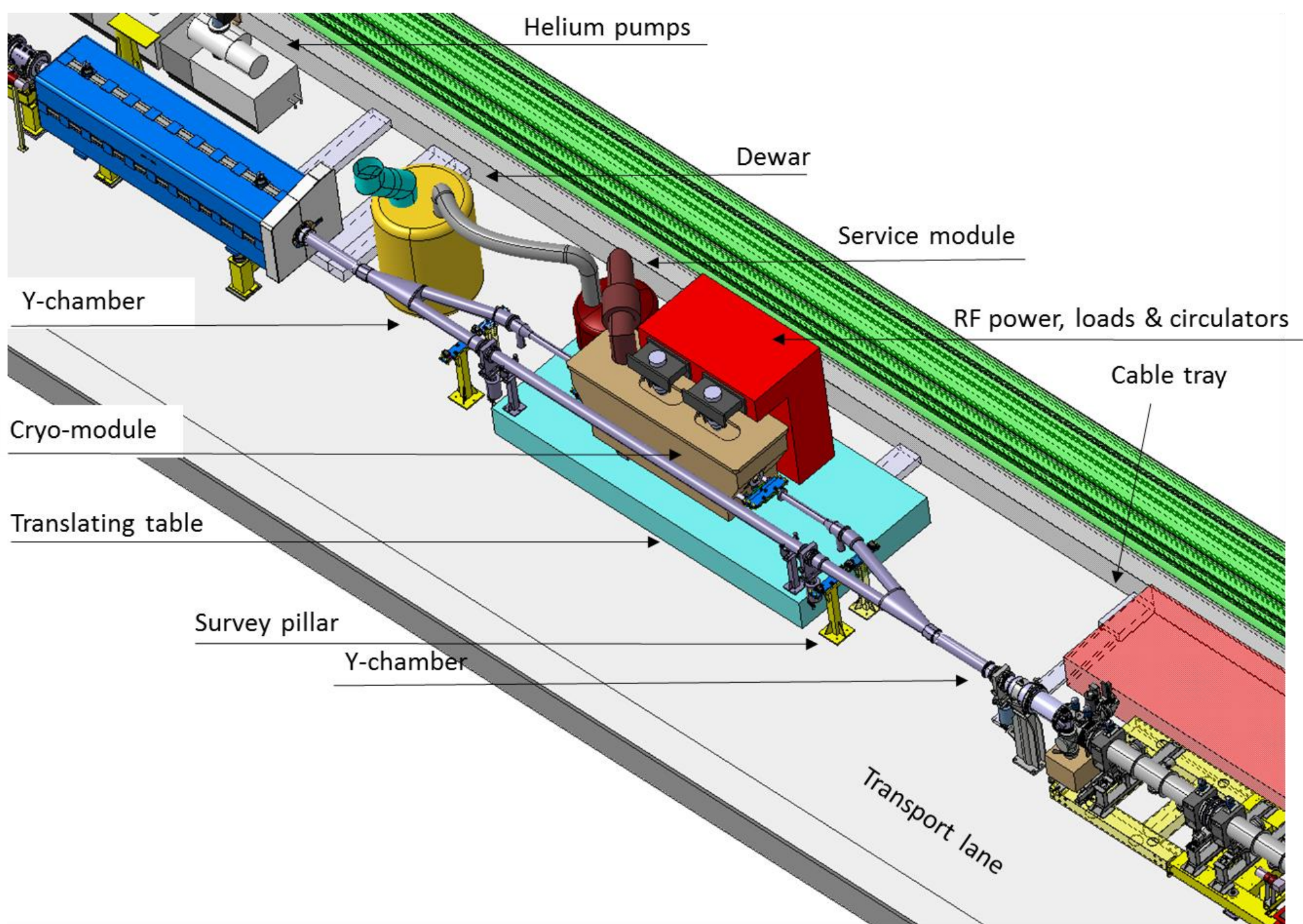


Cryogenics layout

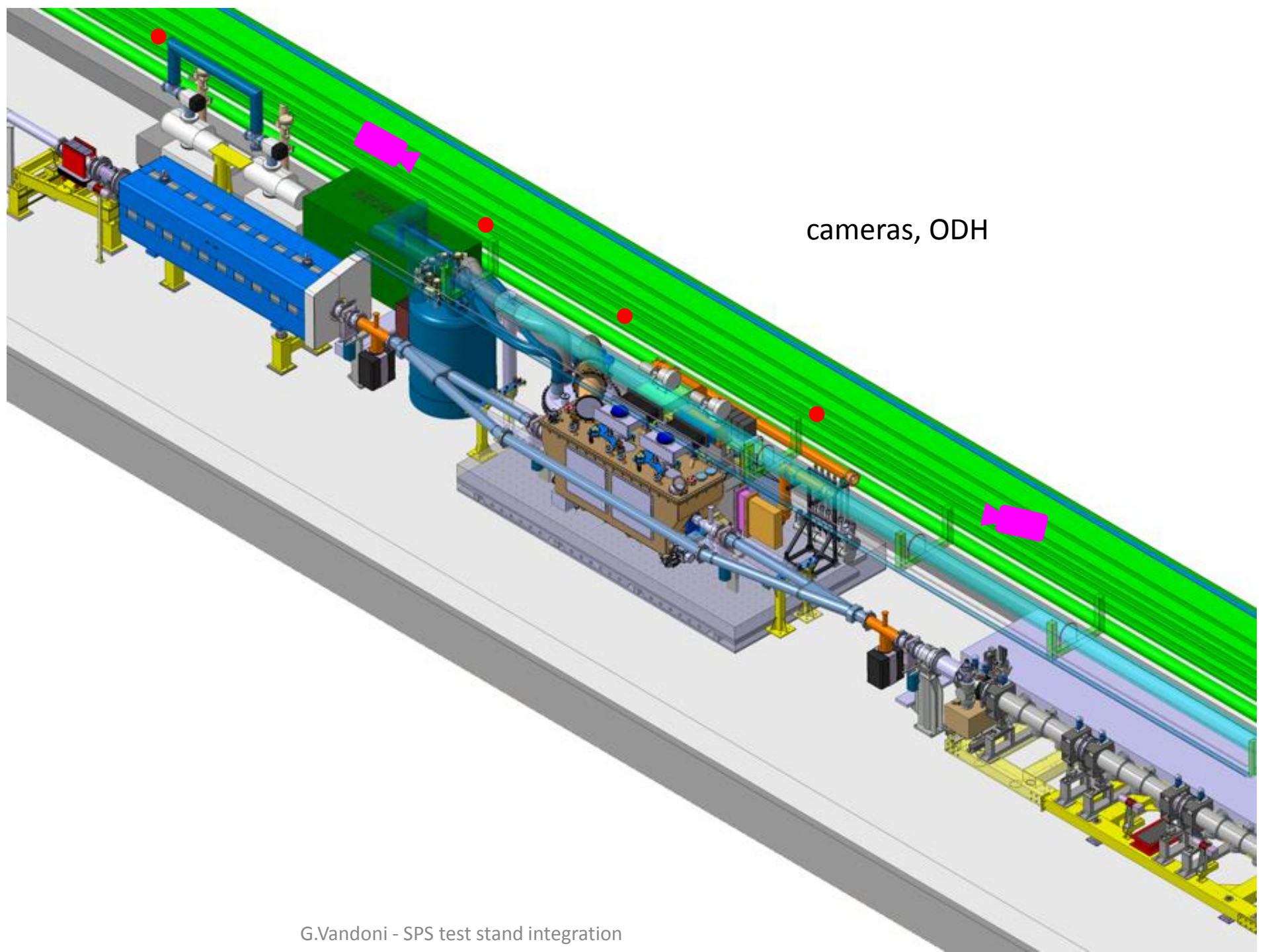


Cold-box = the “fridge”

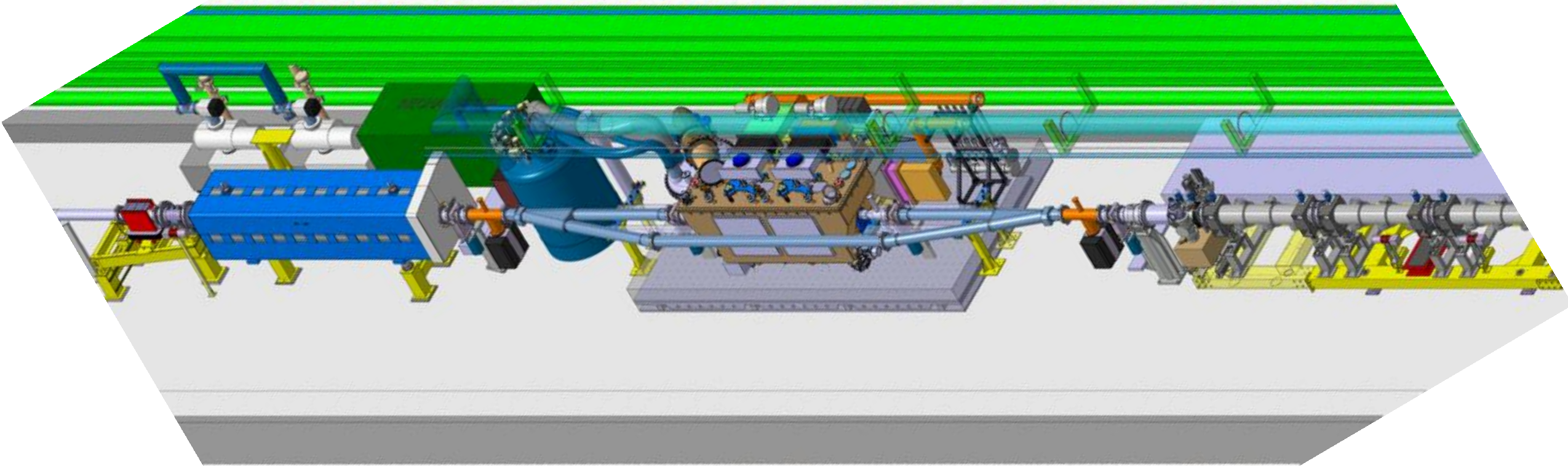
Crab cavity zone



Crab cavity zone



Crab cavity zone



Planning documents

MS Project file

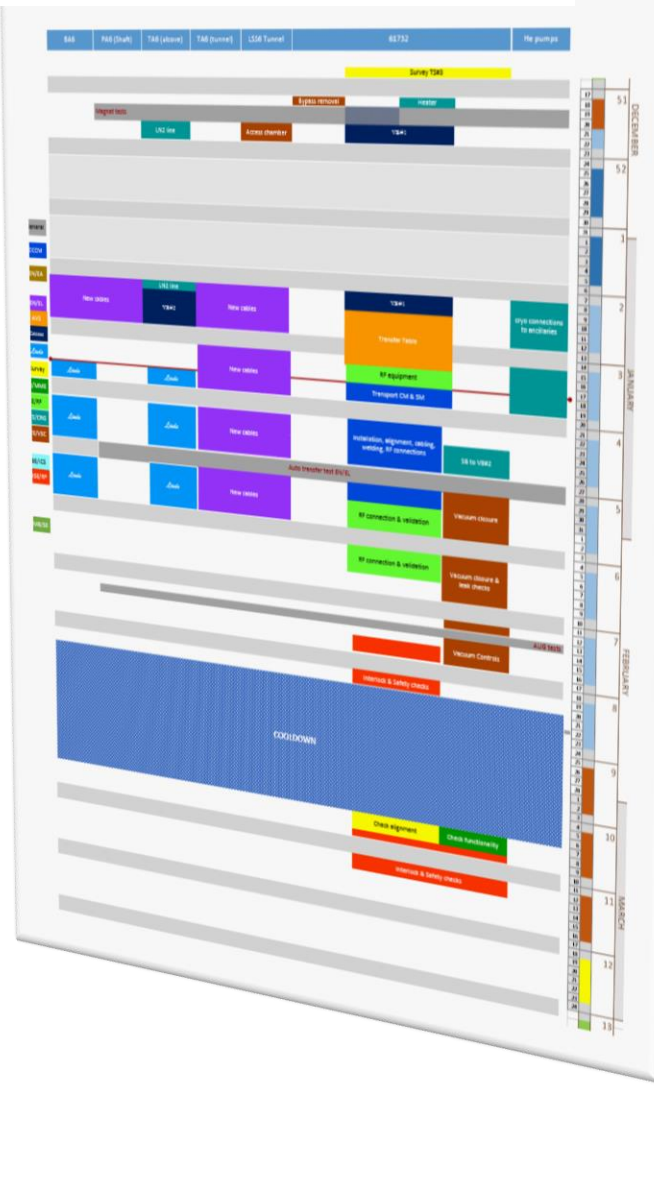
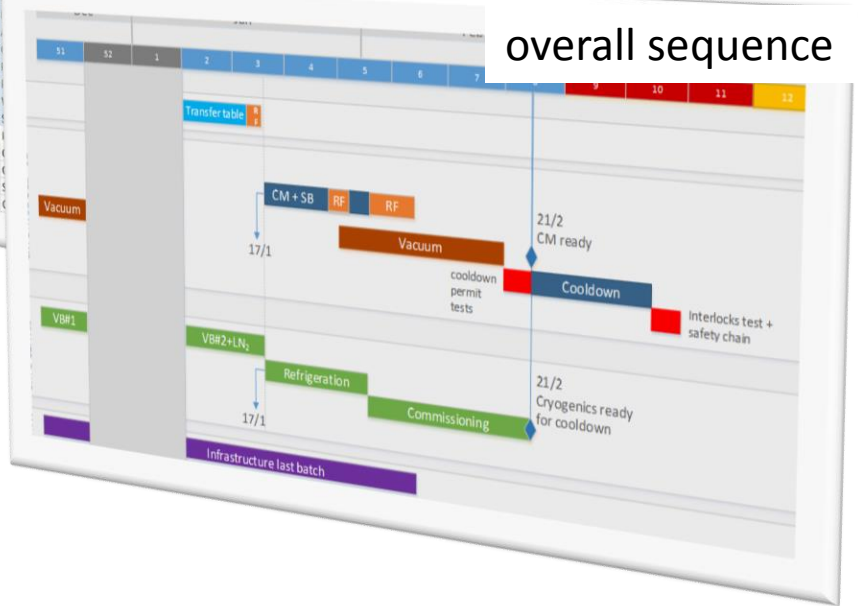
<https://edms.cern.ch/document/1843665/1>

detailed sequence, per location

detailed task list

Task number	Zone	Task	Task1	Task2
1	1.0	BA6 overall		
0	0.0	Tunnel area		
2	2.0	Survey preparatory activities	EN/EL	T.Slettestol/ G.Gr
3	3.0	Dismount vacuum line	EN/EL	T.Slettestol/ G.Gr
4	4.0	Cryogenic ancillaries 1	EN/ACE/SU	M.Sosin
5	5.0	Install cryomodule transfer table	TE/VSC	C.Pasquino
6	6.0	Local cabling	TE/CRG	J.Metselaar
7	7.0	Position 2 skids with circulators and loads at the back of the table	EN/MME	K.Artoos
8	8.0	Position Service Box on the table	EN/MME	K.Artoos
9	9.0	Position Cryomodule on the table	BE/RF	S.Calvo
10	10.0	Adjust Cryomodule position	TE/CRG	K.Brodzinski
11	11.0	Cable underneath the Cryomodule	EN/HE	C.Bertone
12	12.0	Connect Service Box to Cryomodule	EN/HE	M.Sosin
13	13.0	Install waveguides from loads + circulators to Cryomodule	BE/RF	S.Calvo
14	14.0	Install flexible lines from ValveBoxR2 to Service Box	EN/MME	M.Garlasche
15	15.0	Cabling of all remaining...	BE/RF	S.Calvo

overall sequence



General YETS in BA6

week 51 – 18th Dec

Tue-Wed 19/20 Dec magnet tests **no access**

Sat-Sun 27/28 Jan Auto transfer test **no access**

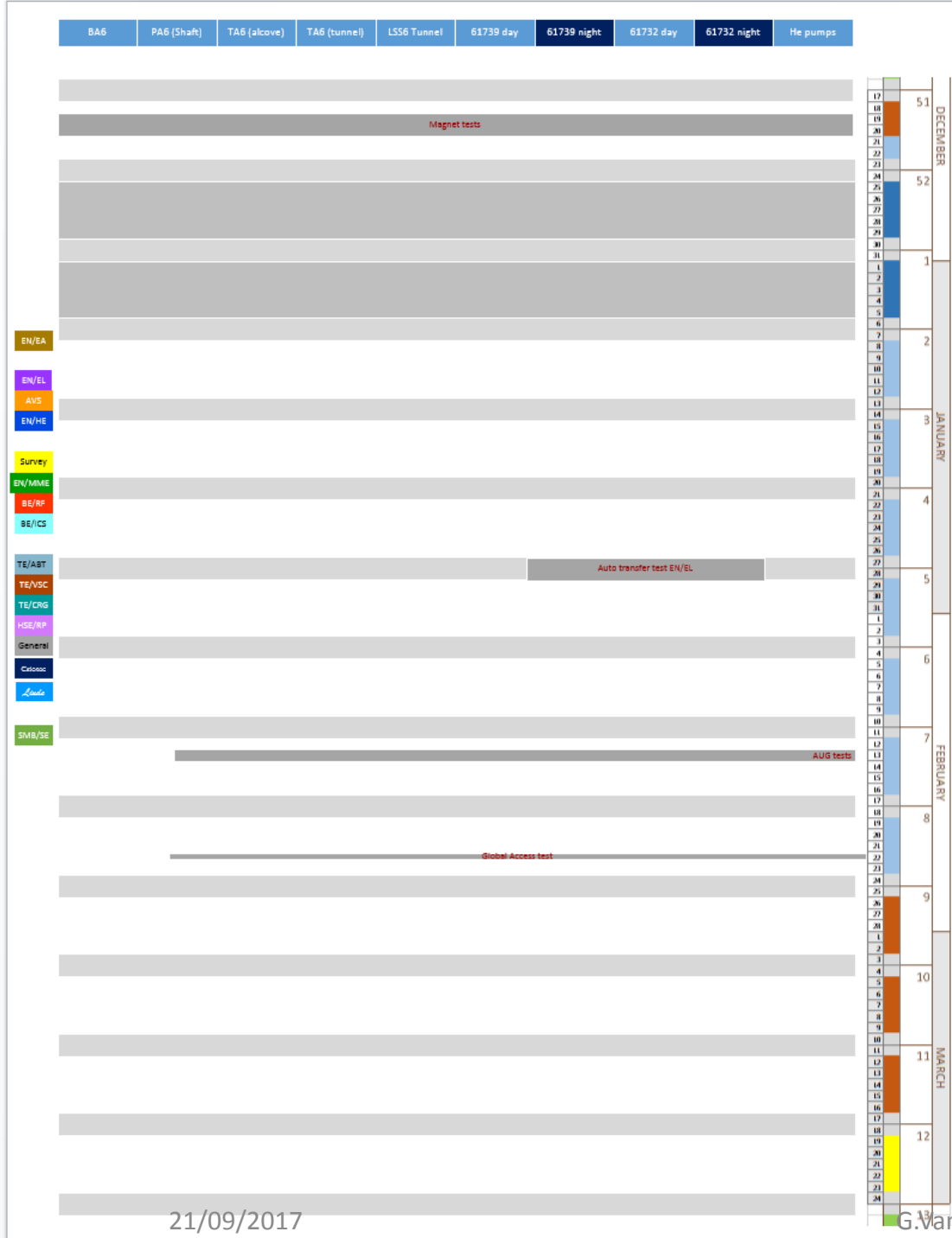
13 Feb AUG test **no access**

22 Feb, Global Access test **no access**

week 8 – 23rd Feb

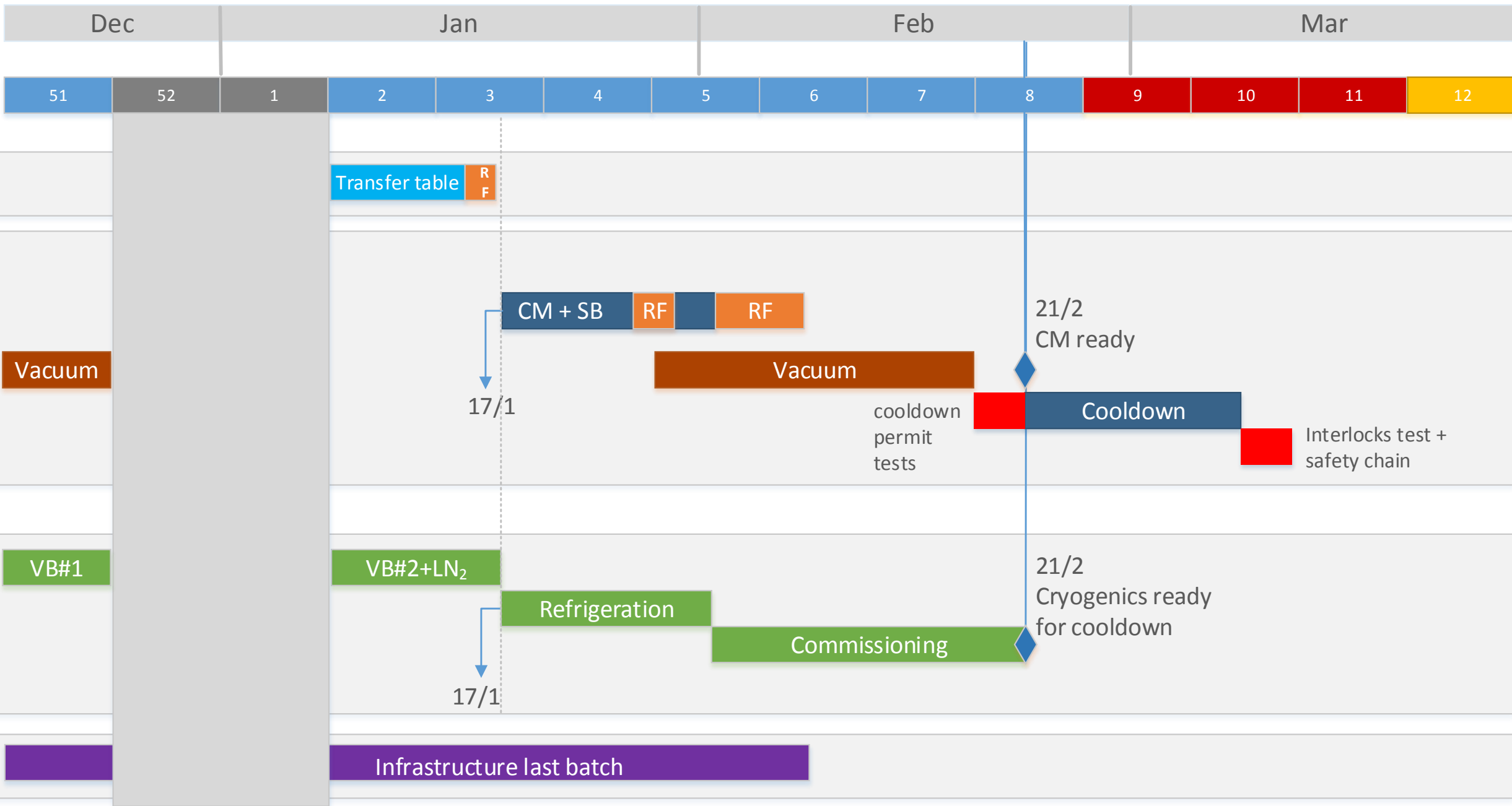
week 9 to week 11

week 12 : BEAM



21/09/2017

G. Vandoni - SPS test stand integration



1	Task	SPS crab-cavity test stand - YETS-2017-2018 Planning		
2	File	Task-list-for-SPS-BA6-YETS.xlsx		
3	EDMS Doc	https://edms.cern.ch/document/1843665/1		
4	Budget Code	69 065		
5	Rev. / Checked on	08/09/2017		G.Vandoni

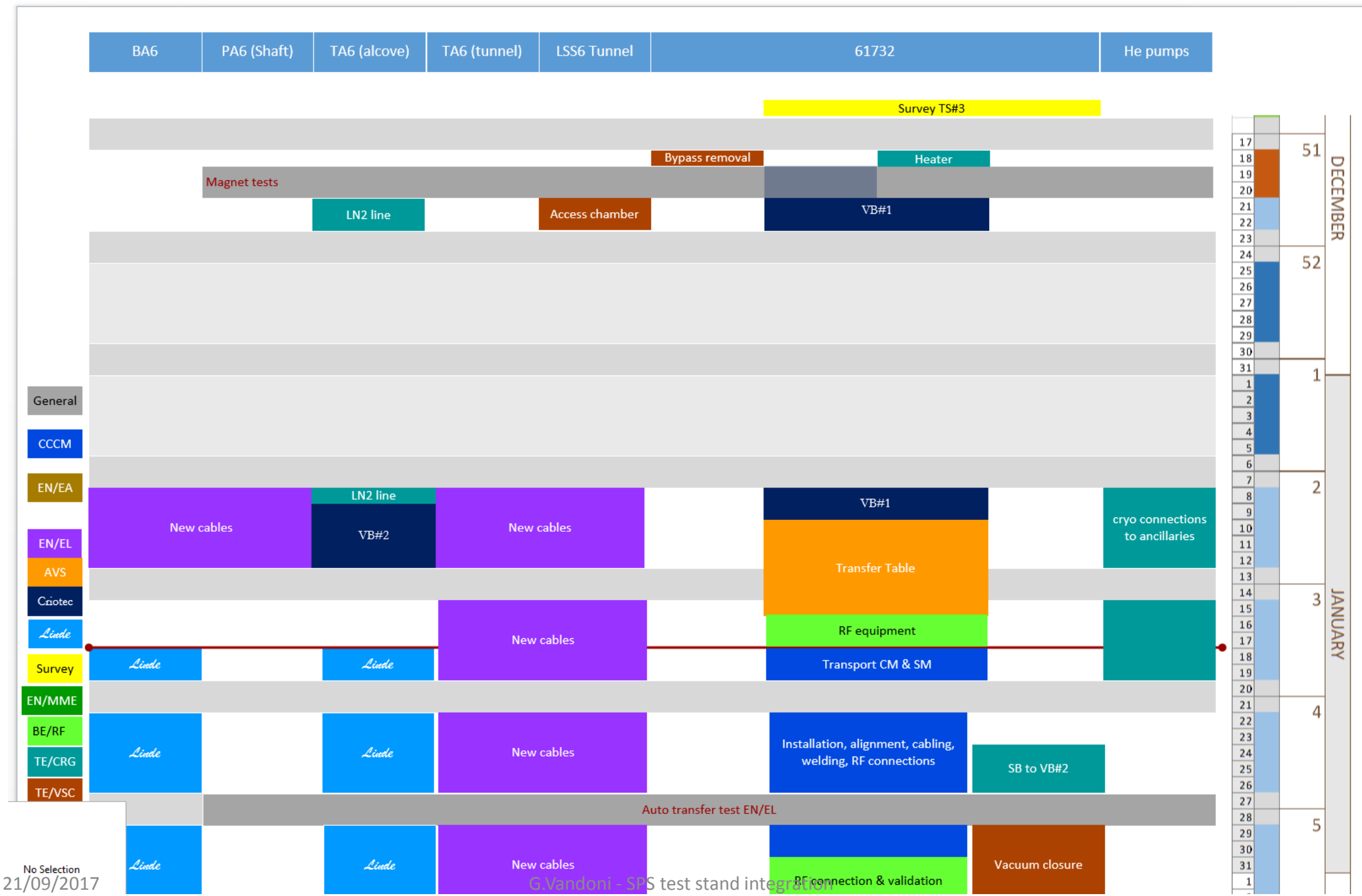
<https://edms.cern.ch/document/1843665/1>

Task								
Task number	Zone	Task	Task1	Task2				
		BA6 overall						
1	1.0	Remaining cabling			EN/EL	T.Slettestol/ G.Gros		
		Tunnel area						
0	0.0	Survey preparatory activities			EN/ACE/SU	M.Sosin		
2	2.0	Dismount vacuum line			TE/VSC	C.Pasquino		
3	3.0	Cryogenic ancillaries 1			TE/CRG	J.Metselaar		
4	4.0	Install/ commission transfer table			EN/MME	K.Artoos		
5	5.0	Local cabling			EN/MME	K.Artoos		
6	6.0	Position 2 skids with circulators and loads at the back of the table			BE/RF	S.Calvo		
7	7.0	Position Service Box on the table			TE/CRG	K.Brodzinski		
8	8.0	Position Cryomodule on the table			EN/HE	C.Bertone		
9	9.0	Adjust Cryomodule position			EN/HE	M.Sosin		
10	10.0	Cable underneath the Cryomodule			BE/RF	S.Calvo		
11	11.0	Connect Service Box to Cryomodule			EN/MME	M.Garlasche		
12	12.0	Install waveguides from loads + circulators to Cryomodule			BE/RF	S.Calvo		
13	13.0	Install flexible lines from ValveBox#2 to Service Box			TE/CRG	J.Metselaar		
14	14.0	Cabling of all services of Cryomodule and Service Box			All			
15	15.0	Close beam vacuum			TE/VSC	C.Pasquino		
16	16.0	Install insulation vacuum equipment			TE/VSC	J.Perez Espinos		
17	17.0	Install coaxial lines & clarinets			BE/RF	S.Calvo		
18	18.0	Adjust length of RF Power lines			BE/RF	S.Calvo		
19	19.0	Check table movement under load			EN/MME	K.Artoos		
20	20.0	Pumpdown and validation of cryomodule vacuum			TE/VSC	C.Pasquino		
21	21.0	Pumpdown of bypass line			TE/VSC	C.Pasquino		
22	22.0	Vacuum controls commissioning			TE/VSC	F.Delsaux		
23	23.0	Survey of Cryomodule under vacuum			EN/ACE/SU	M.Sosin		
24	24.0	Install all lines from ValveBox#2 to heater and helium pumps			TE/CRG	J.Metselaar		
25	25.0	Cooldown permit checks						
26	26.0	Cooldown			TE/CRG	K.Brodzinski		
27	27.0	Survey of Cryomodule at cold			EN/ACE/SU	M.Sosin		
28	28.0	Check of interlocks			BE/RF	L.Arnaudon		
29	29.0	Installation & Commissioning of PODH			BE/ICS/AS	N.Broca		

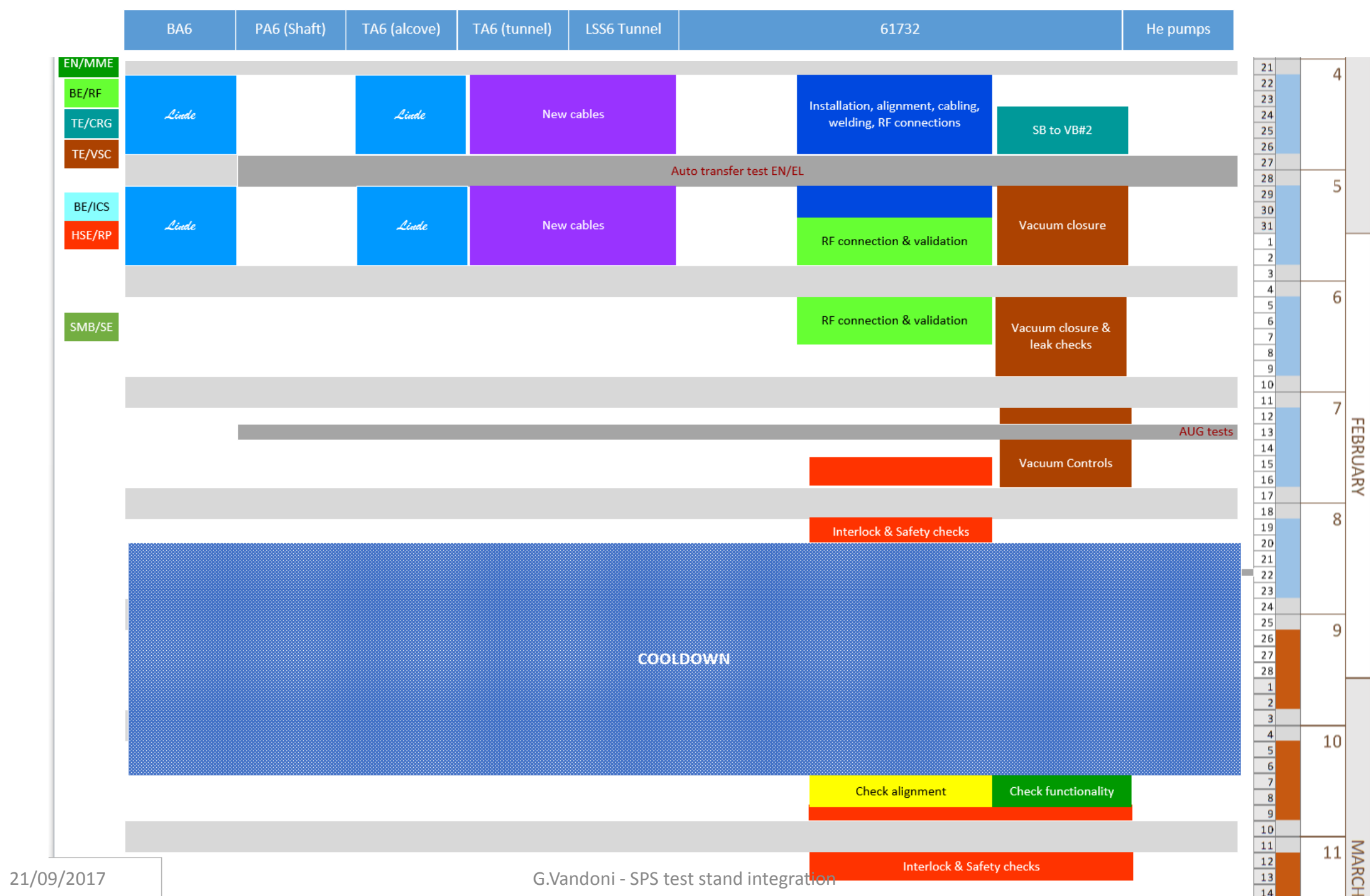
21/09/2017

G.Vandoni - SPS test stand integration

week 51 to week 5



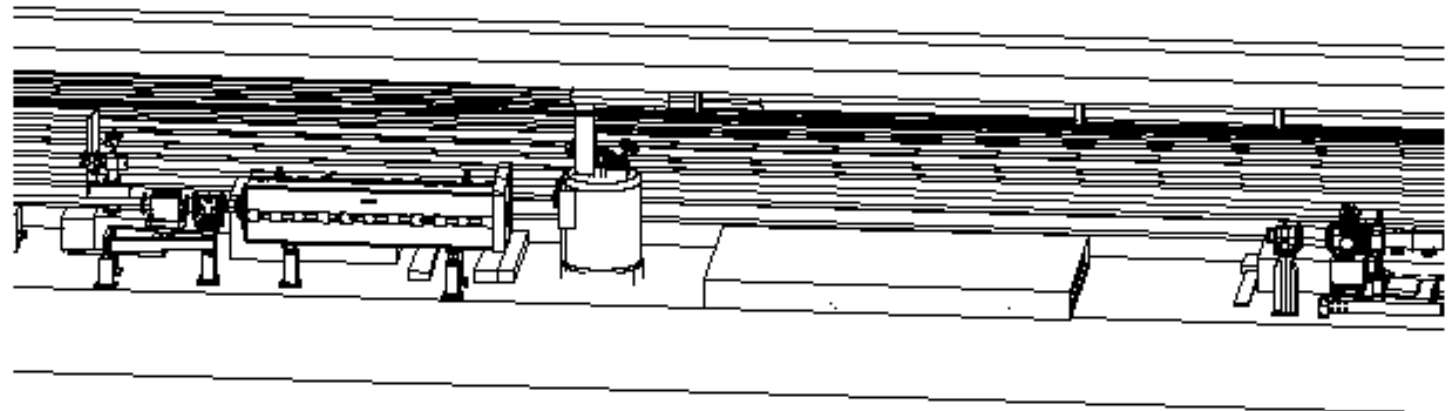
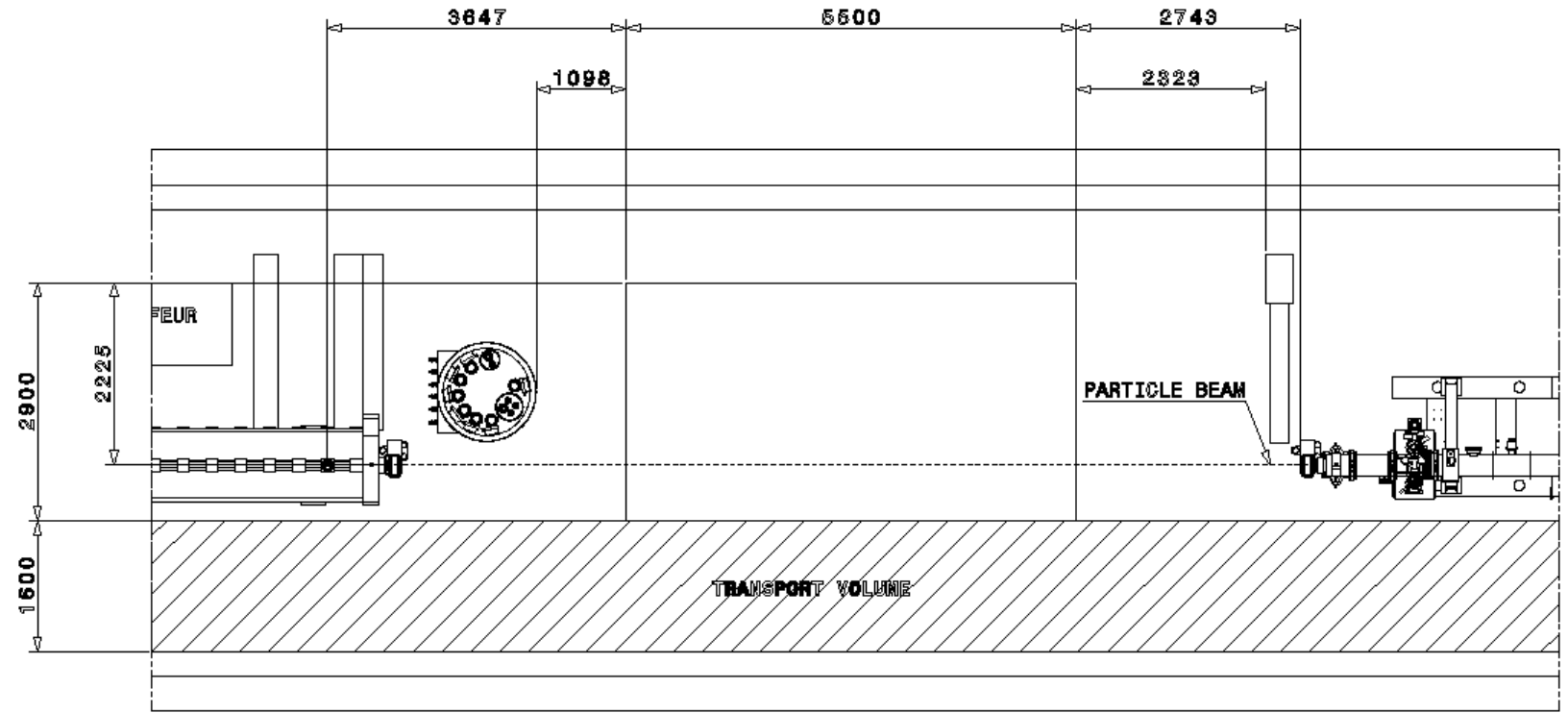
week 5 to week 11



21/09/2017

G.Vandoni - SPS test stand integration

Table installation: start situation



SPSHHRTS0001