

The slide features a dark blue background with a pattern of light blue arrows pointing upwards and to the right. At the top, there is a large, stylized graphic of a supply chain network, composed of white-outlined rectangular boxes connected by lines, with some boxes overlapping. The main title is centered in white text.

# Supply chain management study



Tuukka Pöyry  
Master of Science student

## My tasks

To support European silicon sensor alliance by giving assistance to all participants

→ E.g. work in different WPs

To assist at COST funding

→ Preliminary proposal

To study supply chain management in consortium

→ Master's thesis

Also the following...

## Preparing consortium for upcoming CERN market survey

- Technology assessment
- Networking
-

## Master's thesis

### Research questions:

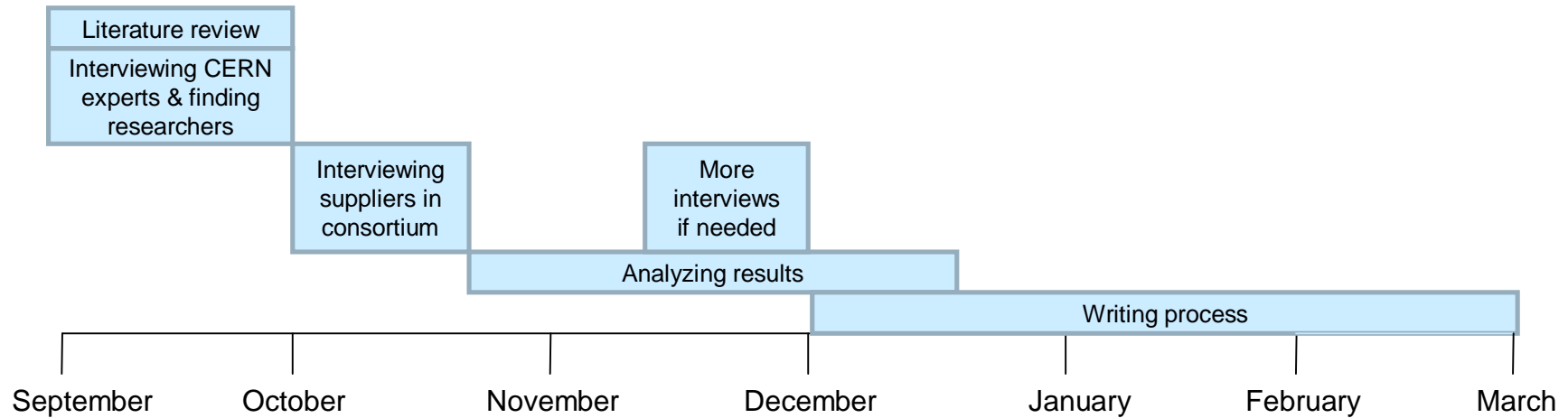
- What best practices from electronics projects can be transferred to this project?
- How to identify critical requirements and key performance objectives?
- Any special features to consider?

### Research methodology:

To benchmark previous electronics purchasing projects by

- Interviewing consortium partners
- Interviewing key personnel at CERN
- Interviewing key personnel at suppliers side

# Timetable for the thesis



# Supply chain management study

## The Product flow:

- Quality assurance
- Logistics
- Speed
- Dependability
- Inventory management

## The Information flow:

- Synchronised information sharing between supply chain players
- Status of production and deliveries

## Contact

Tuukka Pöyry  
tuukka.poyry@cern.ch