



Pacific Northwest
NATIONAL LABORATORY

*Proudly Operated by **Battelle** Since 1965*

Belle II Distributed Data Management System

MALACHI SCHRAM
ON BEHALF OF THE BELLE II DDMS

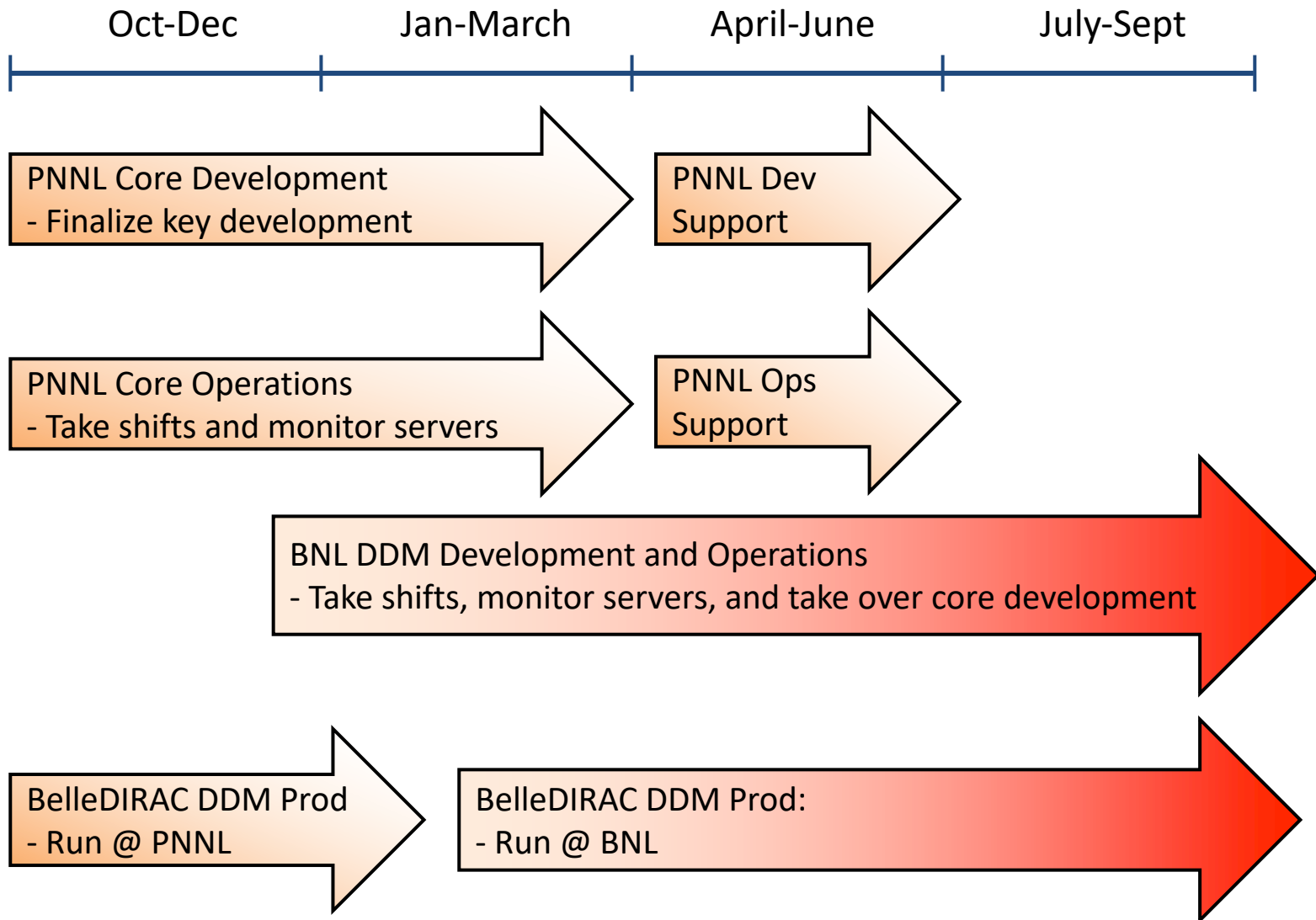
- ▶ **DOE-SC HEP decided to move the U.S Belle II computing/software effort from PNNL to BNL**

- ▶ **Significant delays in development**
 - Focused on site transition (CPU, storage, services, etc.)
 - Premature departure of key members

- ▶ **Personnel**
 - PNNL:
 - Malachi Schram: contribution ends at the end of June
 - Kevin Fox: contribution ends at the end of June
 - Antonio Ledesma: contribution ends at the end of June
 - Vikas Bansal: resigned (last contribution was in November 2017)

 - BNL:
 - Alex Undrus (PAS)
 - Siarhei Padolski (PAS)
 - Hironori Ito (RACF)

Timeline for U.S. FY2018



DDMS development & operation short term (CY2017)

▶ Development with DDM v0.2

- Minor feature and bug fixes within the existing DDMS framework
- Initial refactoring of the deletion component
 - Currently the deletion component is the limiting factor for the DDMS
- Update the raw data transfer agent
- Scaling tests for new components
 - *FanoutAgent* and Deletion components

▶ Operations

- Expert shifts for MC production
- Migrate Belle II samples from PNNL to BNL
- RAW data transfer workflow between KEK to BNL
- Prepare for the full dress rehearsal

DDMS development & operation mid-term (CY2018 until June)

▶ Development with DDM v0.2

- Minor feature and bug fixes within the existing DDMS framework
- Develop the ReplicationPolicy components (service/agent/db)
- Develop the ReplicaAndPopularity components (service/agent/db)
- Multithread agents (focus on limiting factors)
- Generalize DDM to handle different SE plugins
- Update/re-implement end-user command tools to use DDMS
- Recursive datablock transfers

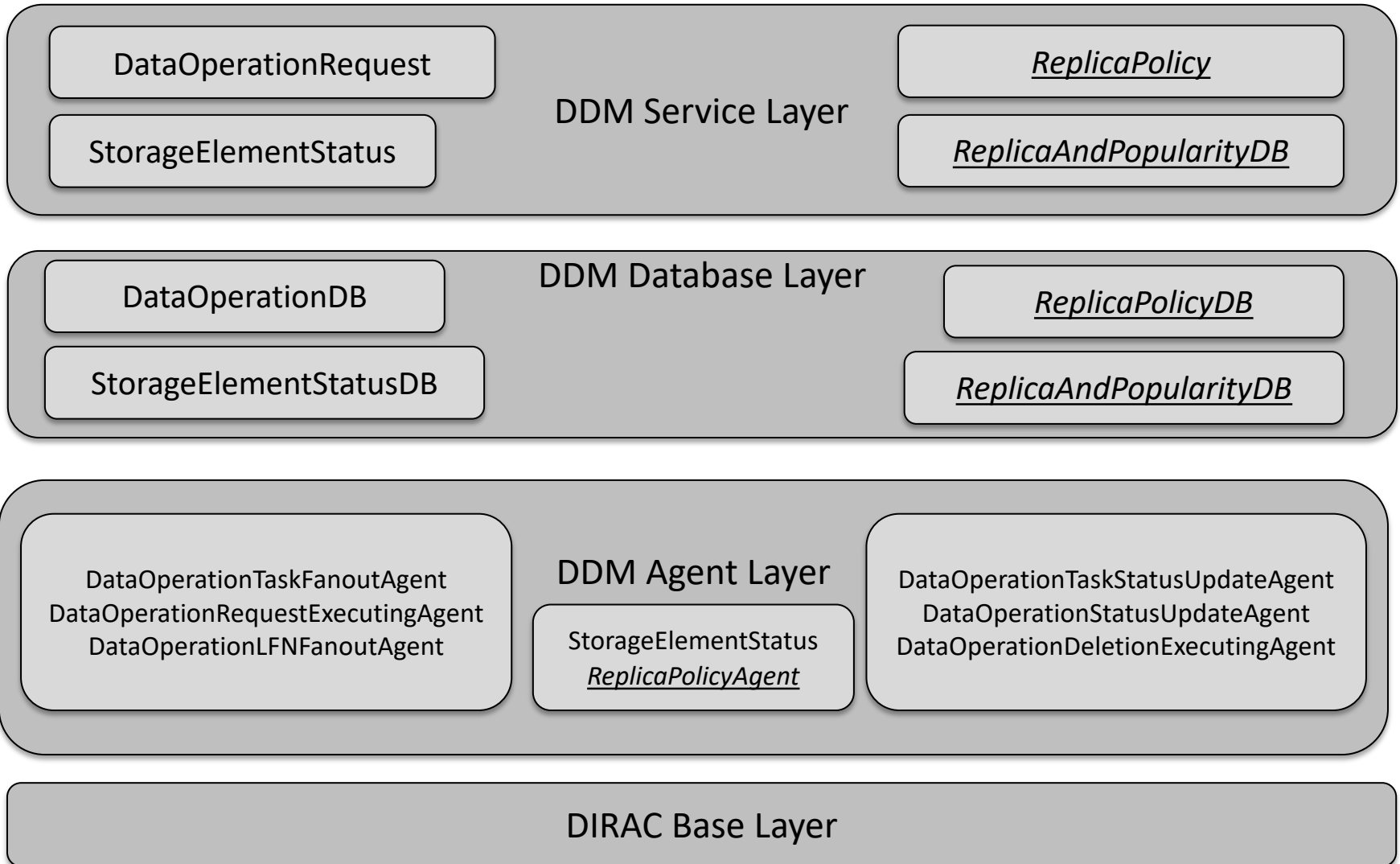
▶ Development for DDM v0.3

- Make the deletion component it's own separate subsystem (like RMS)
- Integrate the rebased DIRAC FTS system into the DDMS

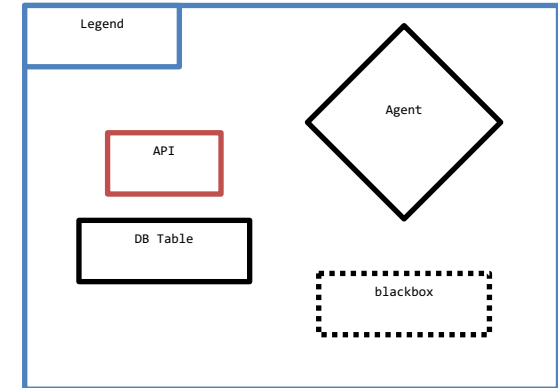
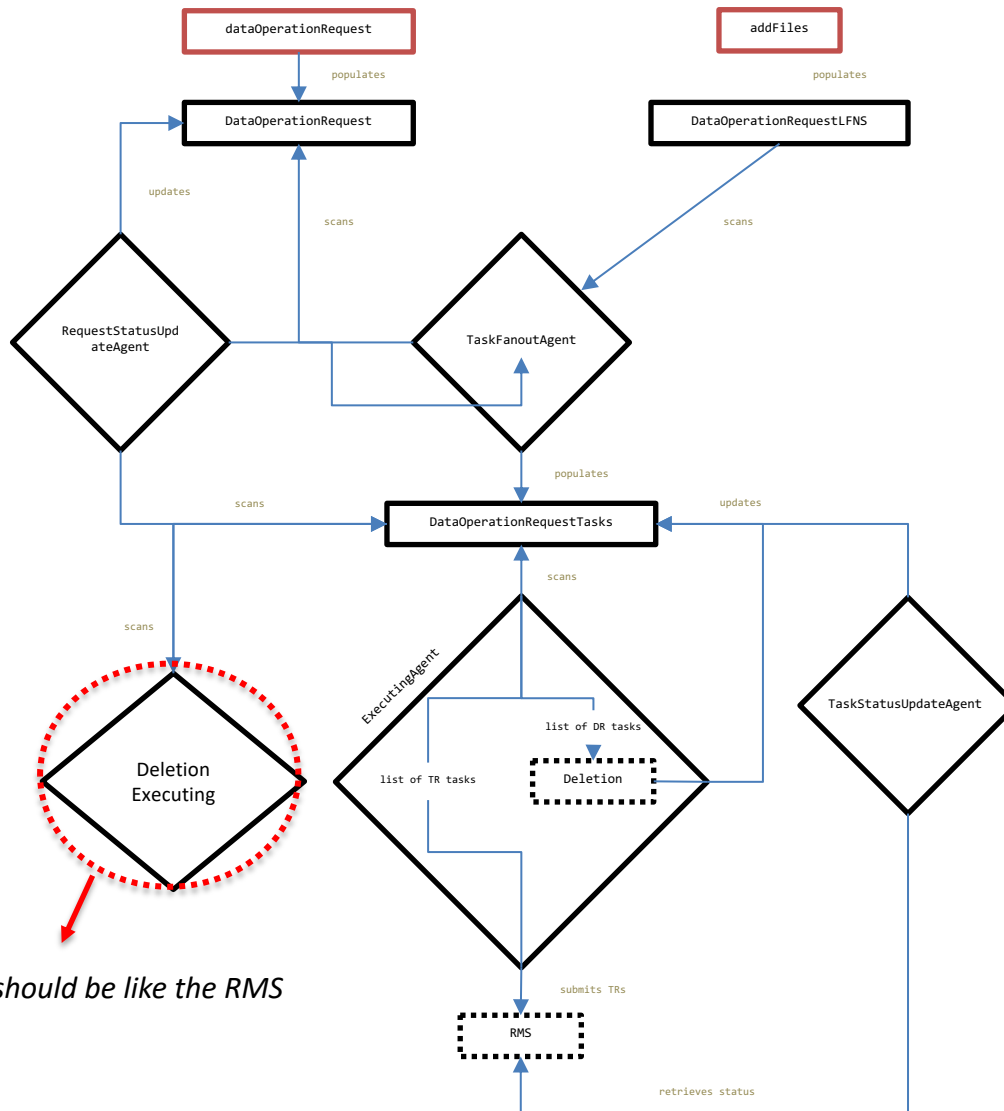
▶ Operations (CY2018)

- Expert shifts
- Prepare for early data taking

DDMS (version 0.2)

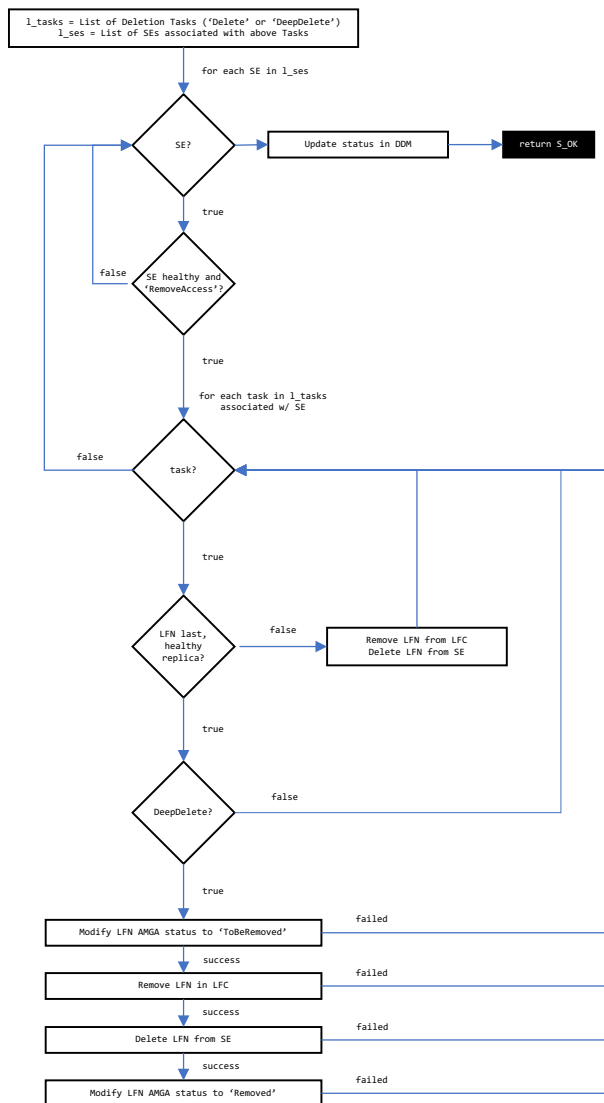


Data operation workflow



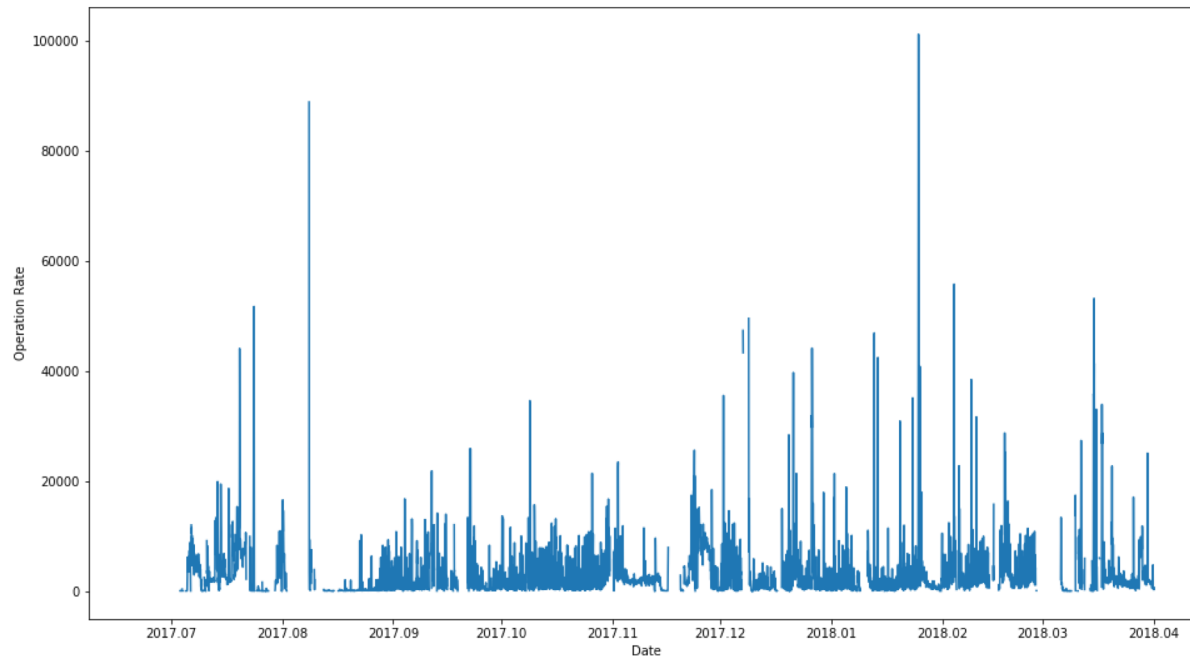
Ideally should be like the RMS

Deletion sub-system workflow



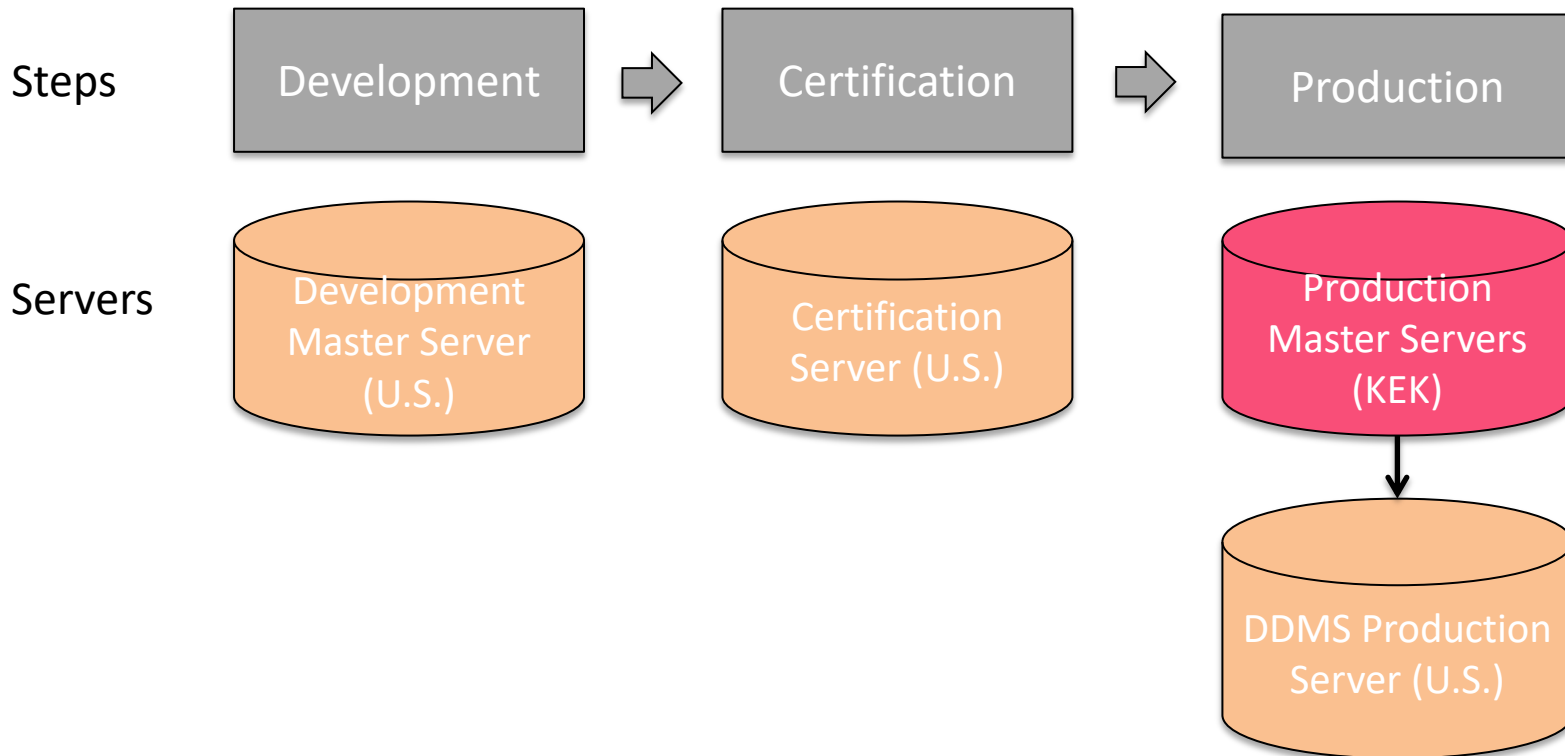
DDMS v0.2 by the numbers

- ▶ **New DDM v0.2 was put into production at PNNL from July 2017 to April 2018**
- ▶ **Total data operations**
 - 19.8M finished data operations
 - Maximum deletion operation rate in an hour was over 12k
 - Maximum replication operation rate in an hour was over 50k
 - Failure rate is 0.57%



Software release cycle

- ▶ DDM and the rest of the BelleDIRAC effort uses the following development release cycle



- ▶ Ongoing work:
 - Finalize deletion and policy replication sub-systems
 - Enhanced monitoring
 - General bug fixes and updates

- ▶ Using the new FTS rebase would still be very nice 😊

- ▶ Plans for DDMS development at BNL starting this Fall:
 - Monitoring enhancements
 - Operational issues analysis
 - Improved data flow control
 - Alarm systems
 - Replica and popularity subsystems
 - Make optimum number of replicas at locations close to users that need them
 - Predictive usage intensity tools (save on SE space)
 - End-user tools improvements