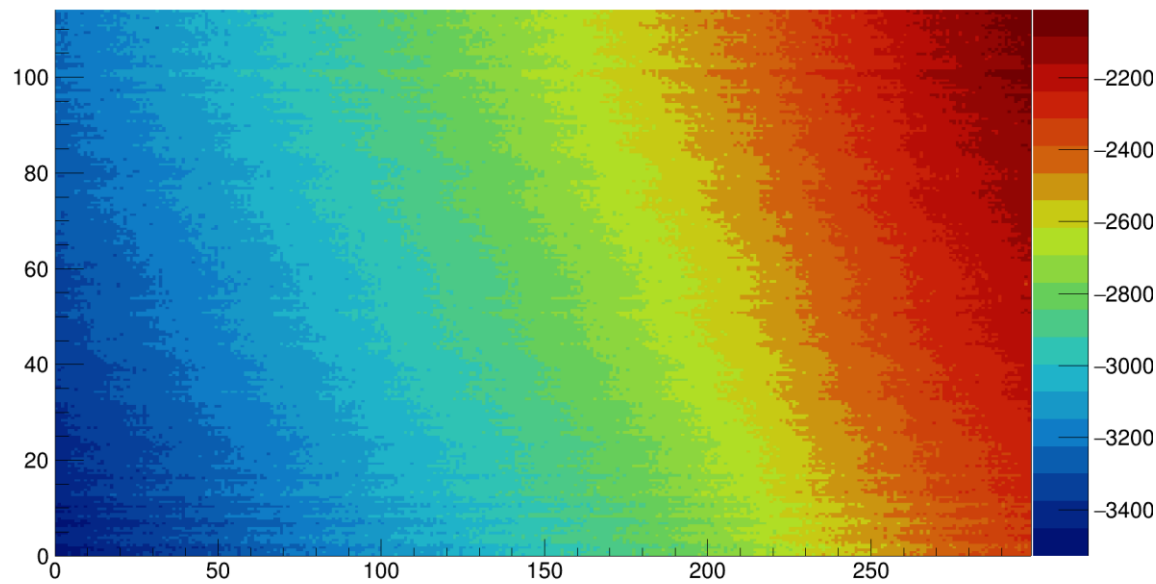


Laser Scan

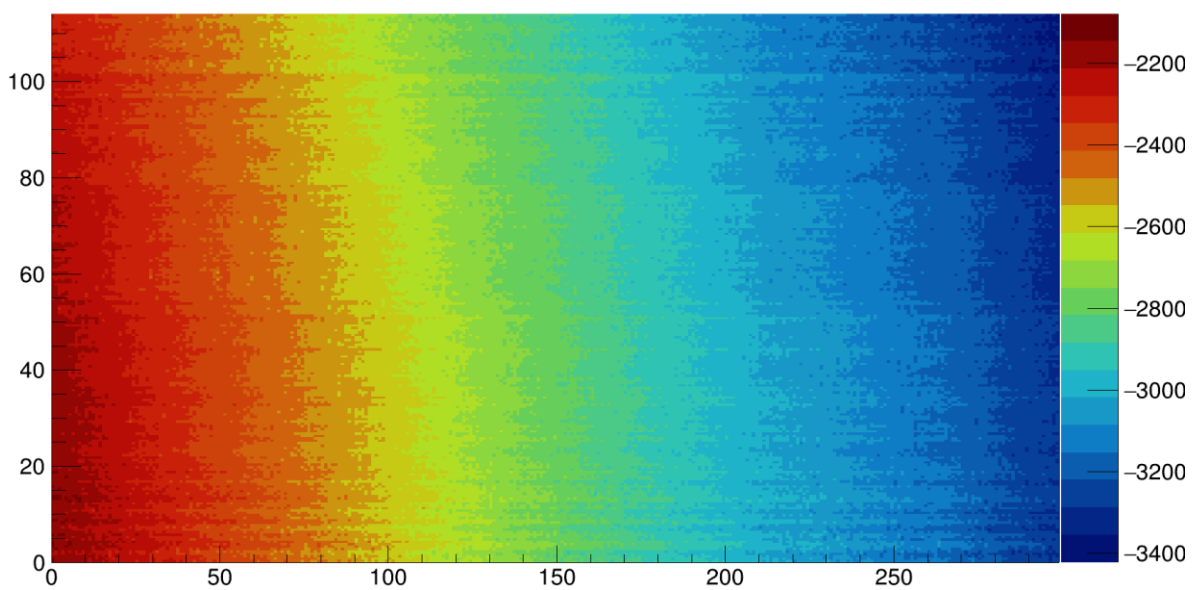
Surface Plate Fitting

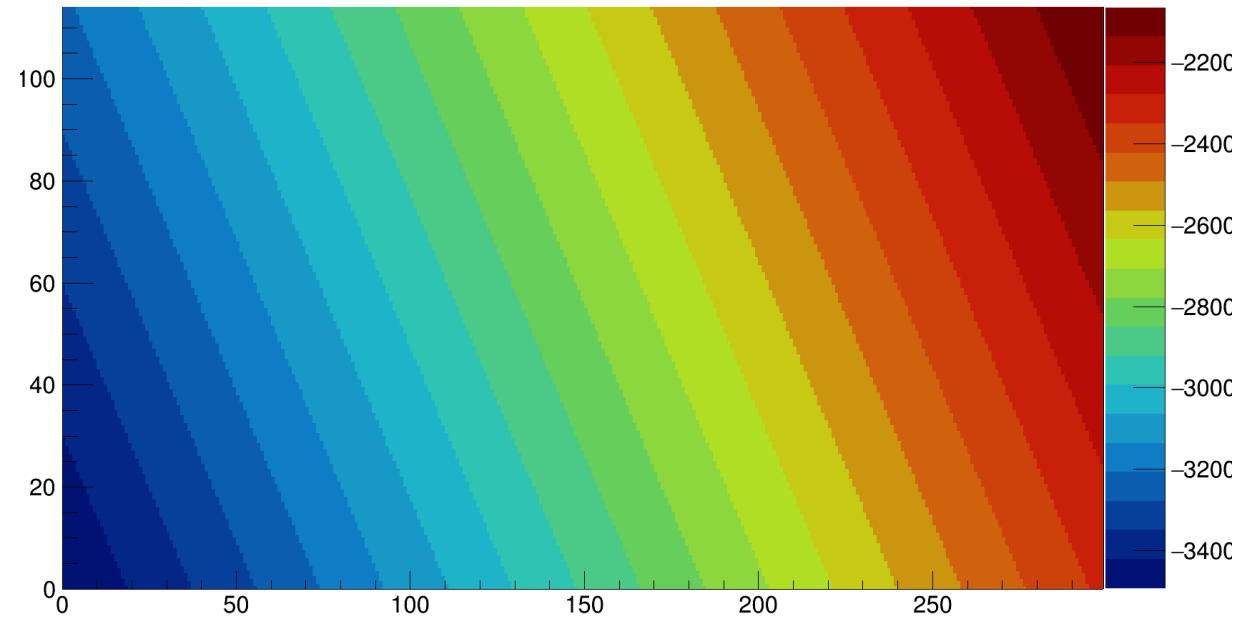
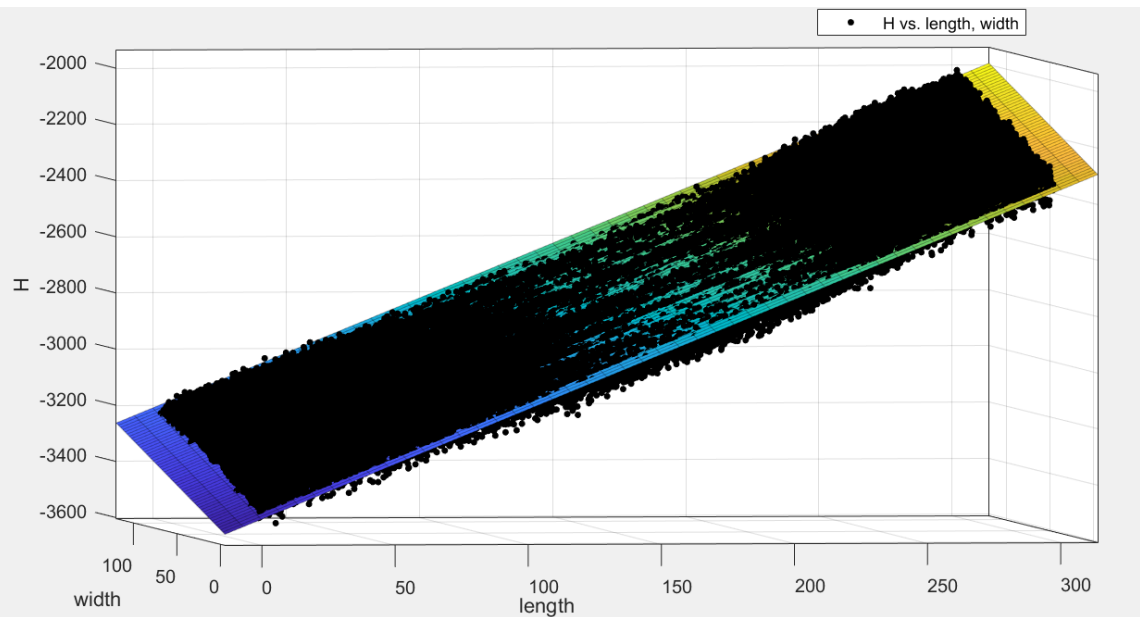
Shuaiyan Kang 12/20/2017

0



180

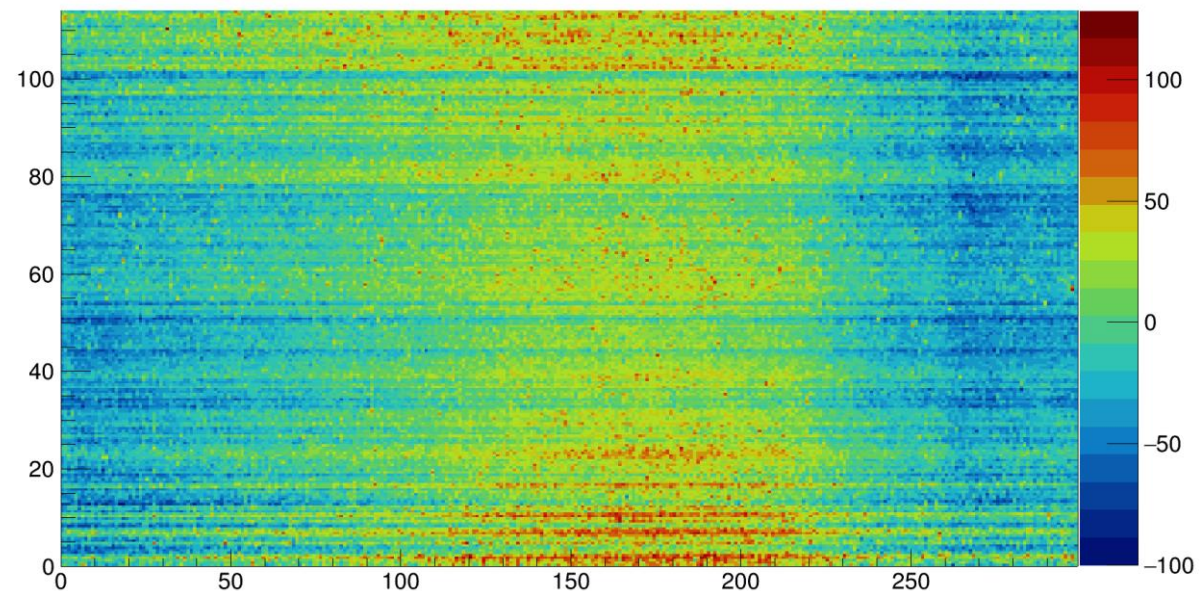
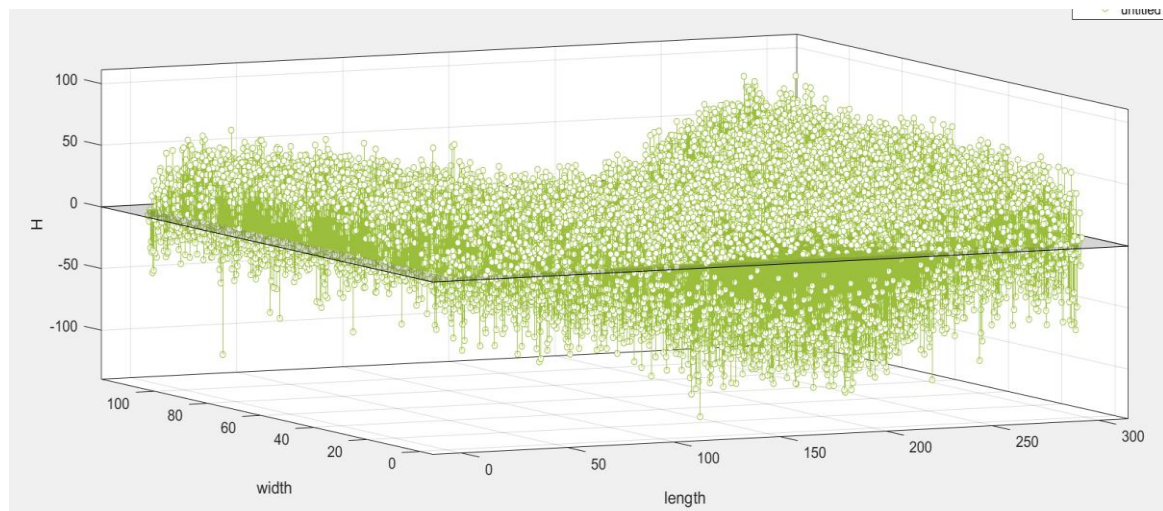




Linear Fit $H = A * length + B * width + C$
 $A=3.871$ $B=2.402$ $C= -3497$

Residue

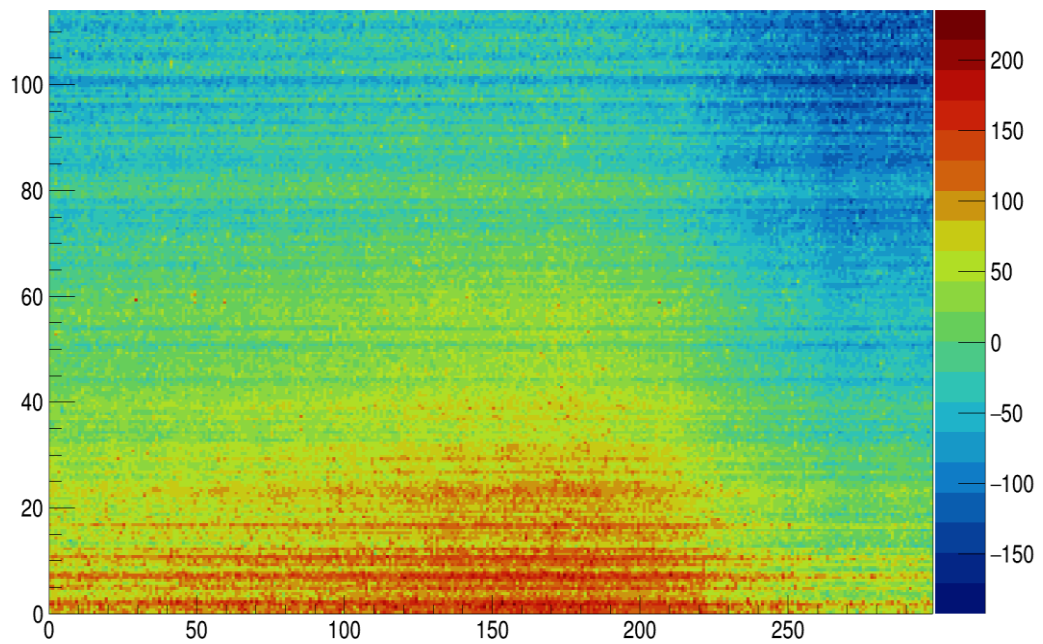
RMS:28



Quadratic fitting gives RMS=18

180 rotation
RMS 47

Simulated – experiment



Experiment: 0 – 180 gives RMS =58