

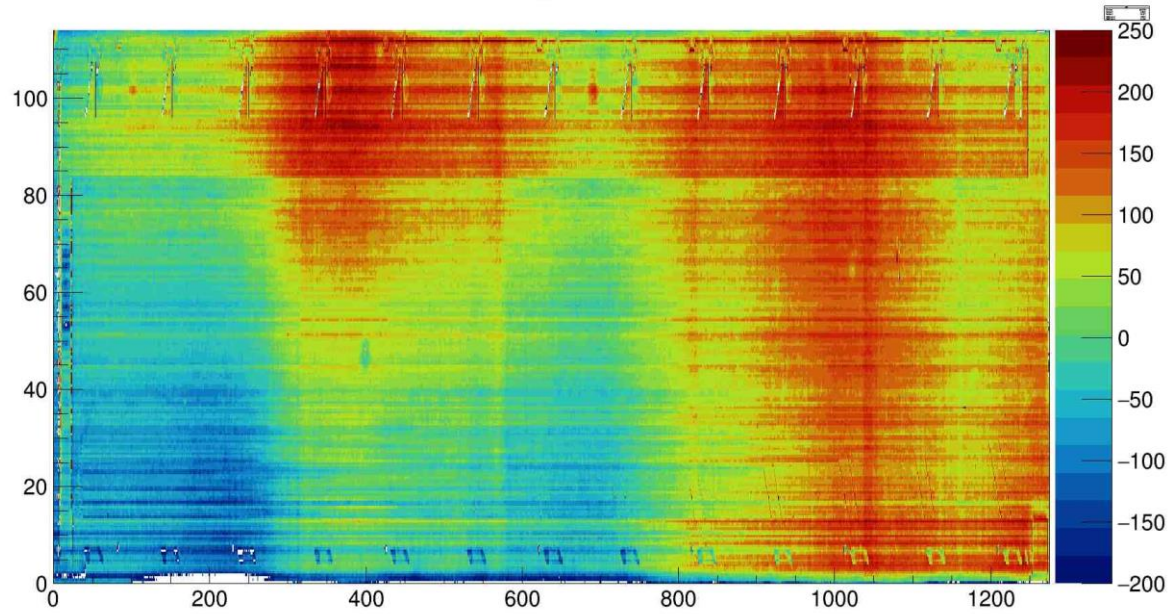
Laser Scan Stave6

Carllos/Boping/Shuaiyan

2018/03/28

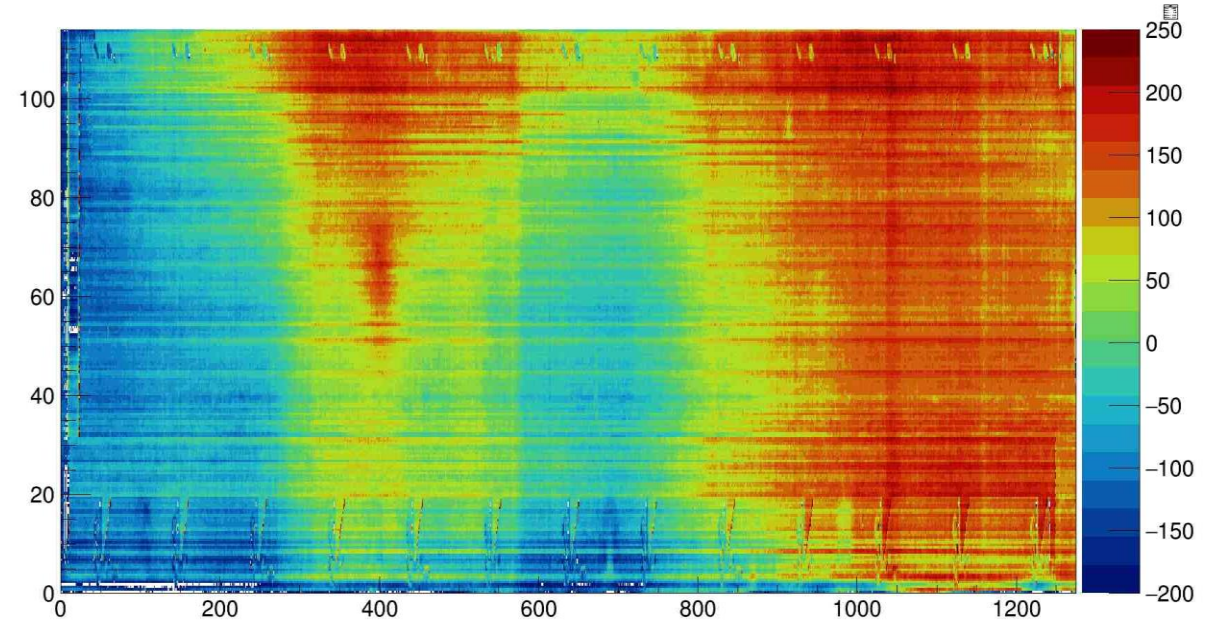
New Data Full Support

h2



L side

h2



J side

Find Maximum Distance

Test: set three top points in the first module (98*220)

| Distance (um) | Experiment Distance (um) | Uncertainty |
|---------------|--------------------------|-------------|
| 29.5 | 30.5 | 3.3% |
| 64.2 | 62.2 | 3.4% |
| 136.9 | 132.1 | 3.5% |
| 163.3 | 163.3 | 0 |

Temporary Result

The stave was scanned 20 times for getting RMS. Heights with RMS larger than 15 were eliminated.

