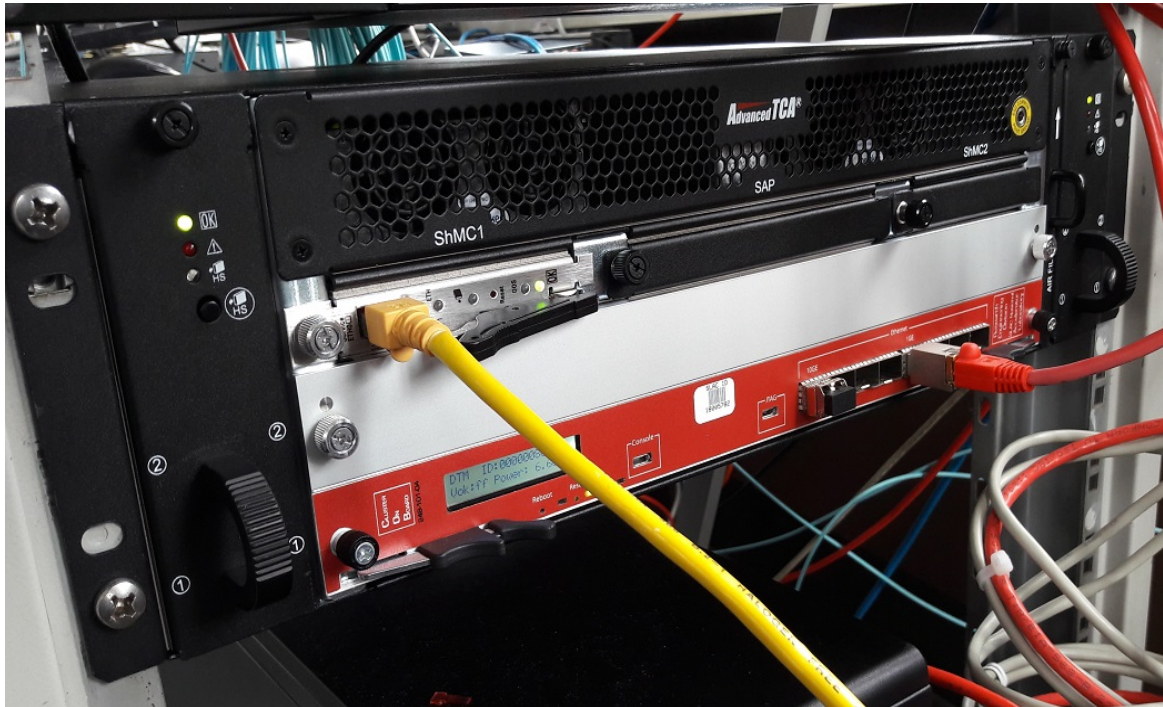


ATLAS RCE test stand meeting, 02.11.2017

Wuppertal ATCA setup & firmware development

ATCA Shelf

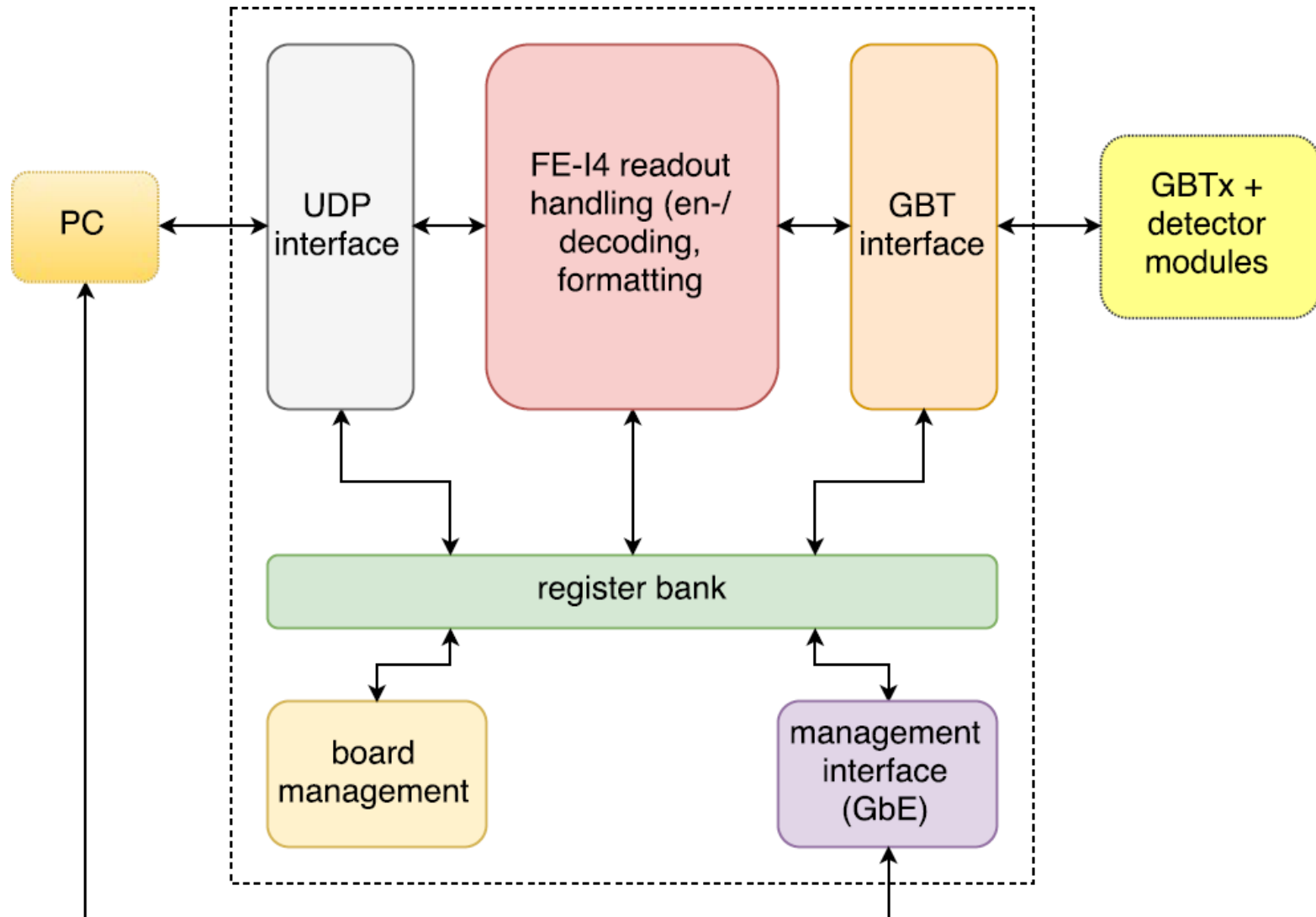
- Installation of Pentair-Schroff 2-slot ATCA shelf happend last week:
- COB+RTM is installed and already usable.
- Optical interfaces to be connected:
 - 2 SFP+ for DPM0
 - 1 SFP+ for 10G Ethernet
- Checked already some tools from RCE SDK (dsl_identify etc.)



Firmware development

- Currently porting Kintex Ultrascale firmware into SLAC framework for easy integration into RCE firmware.
- General approach: FELIX-like system with Ethernet-based data transport to PC running Yarr-software.
- TX core:
 - serial ports (AXI stream, AXI-lite, trigger generator)
- RX core:
 - GBT-FPGA v5 wrappers for surf/ruckus framework
 - FE-I4 decoding and simple event builder

Firmware block diagram



Summary

- ATCA development can now start actively.
- Firmware porting already under progress.
- Questions:
 - GBT only supported with new DTM? Status?
 - Documentation about interfaces/protocols in the surf-framework including software:
RSSI, DMA on Zynq etc.